

Funded by



Department
for Education



Nottinghamshire Holiday Activities and Food

Annual report 2024/25



**The adventure
starts here...**



Nottinghamshire
County Council

Nottinghamshire Holiday Activities and Food



Nottinghamshire County Council received funding from the Department for Education to deliver the HAF programme, which provides free meals, nutritional education and engaging activities for children and young people eligible for benefits related Free School Meals (FSM), aged 5 to 16 years. The programme runs over the spring, summer, autumn and winter school holidays.

Up to 15% of funding can be used to provide free or subsidised holiday club places for 'vulnerable' children and young people who are not in receipt of benefits-related free school meals. There is an emphasis placed on supporting families, parents and carers who participate in this programme to develop their understanding of nutrition and food budgeting, and are signposted towards other information and support, for example, health, employment and education.

The HAF team have coordinated delivery by mapping existing holiday provision and identifying gaps across the county; and in doing has endeavoured to develop a localised plan for HAF provision. Nottinghamshire County Council has developed a comprehensive programme adopting a blended approach, which includes in-house provision, outreach events, and activities, as well as partnerships with different providers across the area. This approach ensures that families have access to a range of opportunities and activities that are sustainable and cost-effective. The council has worked closely with health and wellbeing teams, the cost-of-living team, youth services, and community-based groups and schools around the county to ensure that there is a coordinated effort to support children and young people who are most in need. This collaborative approach has enabled the council to provide a holistic service that benefits the wider community.

The HAF team attend a variety of events around the county, including community park days and the Nottinghamshire county show, to raise the profile of the programme with stakeholders and to engage Nottinghamshire families, supporting them to understand free school meal eligibility, benefits they can access and offering wider signposting for support.

The following report outlines the outcomes of the Nottinghamshire HAF programme.





The Nottinghamshire Holiday Activities and Food programme (HAF) annual report 2024/25 covers the following areas:

- Annual reach figures (primary/secondary)
- Primary/secondary reach – spring, summer, autumn and winter
- Families reached through 'family days'
- 2024/25 finances (with detail of administration costs)
- Partnerships
- Marketing/contact.



Nottinghamshire Holiday Activities and Food



Staff are extremely friendly, knowledgeable, trained, and children feel safe with and around them.



My children have attended ace sports coaching, they have thoroughly enjoyed it, made lots of friends, engaged in lots of activities and I feel secure that they are in a safe environment

50,528

HAF attendances across 2024

(spring, summer, autumn, winter)



153

Venues across Nottinghamshire



15,510

individuals reached

It is a excellent opportunity for my children to experience new activities and make new friends. Thank you for continuing to run these HAF programmes.



72

School sites delivering HAF

My boys love HAF club, the staff are so kind and caring and help the best they can



85%

of venues providing freshly prepared meals to children



85%

of HAF places filled

Based on a sample of 69 responses

It has been amazing for my child, he has made so many new friends that he's been able to keep in contact with even outside the club and he's learnt to cook and bake! Such an amazing program! Thank you 😊

My children have attended all of them so far and they love the team they work with and have made new friends. They have taught my child how to swim and now she loves it. I can't thank them enough for what the team do with them, thank you so much.



Annual reach

Nottinghamshire

Holiday activities and food


Category	Primary	Secondary
HAF funded	8,571	2,994
Other	3,553	392
Total	12,124	3,386
SEND	1,220	766

HAF Nottinghamshire was delivered across four holiday periods, spring, summer, autumn and winter, engaging with a combined total of 15,510 children and young people.

Nottinghamshire Holiday Activities and Food



Spring reach

Holiday activities and food		
 Spring Nottinghamshire 2024		
Category	Primary	Secondary
HAF funded	2,040	707
Other	689	104
Total	2,729	811
SEND	297	148

In spring 2024 HAF Nottinghamshire engaged with 3,540 children and young people.



Summer reach

Holiday activities and food



Nottinghamshire 2024

Category	Primary	Secondary
HAF funded	3,251	1,217
Other	612	60
Total	3,863	1,277
SEND	496	300

In summer 2024 HAF Nottinghamshire engaged with 5140 children and young people.

Nottinghamshire Holiday Activities and Food



Autumn reach

Holiday activities and food		
Autumn		
Nottinghamshire 2024		
Category	Primary	Secondary
HAF funded	1,989	443
Other	2,051	186
Total	4,040	629
SEND	279	188

In autumn 2024 HAF Nottinghamshire engaged with 4,669 children and young people.



Winter reach

Holiday activities and food



Nottinghamshire 2024

Category	Primary	Secondary
HAF funded	1,291	627
Other	201	42
Total	1,492	669
SEND	148	130

In winter 2024 HAF Nottinghamshire engaged with 2,161 children and young people.

Nottinghamshire Holiday Activities and Food



Family days

Nottinghamshire

Holiday activities and food

Period 2024	No. of days	Venue	Families attended
spring	1	White Post Farm	81
summer	1	HPP	44
summer	1	The Mill	44
summer	1	Adventures 28.08	24
summer		Adventures - summer sessions 27.07-02.09	80
autumn	1	Retford Majestic Theatre	12
winter	2	Nottingham Playhouse	39
winter	1	Mansfield Palace Theatre	24
winter	2	Newark Palace Theatre	26
winter	1	Retford Majestic Theatre	5
winter	9	Nottingham Ice Arena - family skate	50
winter	3	Nottingham Ice Arena - Santas Grotto	13
winter	1	Adventures Family sessions	442





“An absolutely brilliant service for our children. The summer holiday HAF was particularly helpful as my child gets very fed up. All staff have been great, friendly and approachable. I would definitely recommend HAF!!”

“My son has been attending the holiday club since it started and he absolutely loves it. He's made so many new friends which he keeps in contact with throughout the months the club isn't running. The staff have been amazing, and my son recently learnt how to bake biscuits, cakes and bread and they tasted fantastic!! Thank you so much, hope to see you all soon!!”



Nottinghamshire Holiday Activities and Food



2024/25 Finances

Expenditure type	£
Administrative	£267,253
Capital	£54,900
Programme (all costs of providing HAF places, payments to providers and third party services)	£2,304,974
Other	£47,759
Total expenditure (for 1 April 2024 to 31 March 2025)	£2,674,887



2024/25 Administration costs

Expenditure type	£
HAF team	£204,315
Business support	£37,448
Finance	£2,423
Customer services group	£8,927
Design and build	£0
Total administration expenditure	£253,113

Nottinghamshire Holiday Activities and Food



External partnerships

A network of partners have provided support, governance and delivery to respond to the needs of families.



External providers

A network of activity providers have provided programmes and signposting to Nottinghamshire families.



Nottinghamshire Holiday Activities and Food



Integrated
Children's
Disability Service

Benefits and
Cost of Living
team



Health &
Wellbeing
team

Youth
Service

Food Insecurity
network

Notts
Outdoors



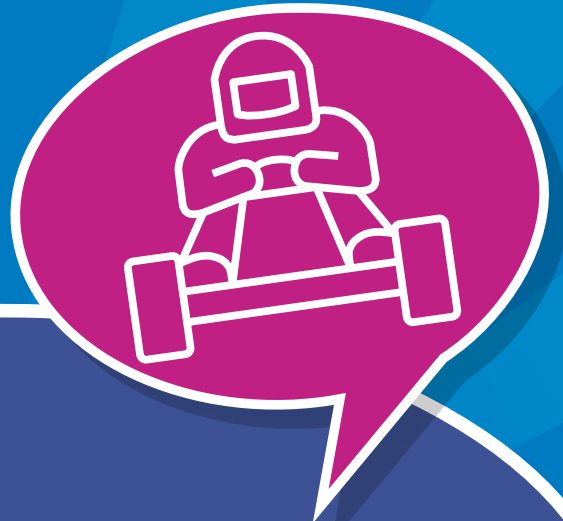
Young
Carers



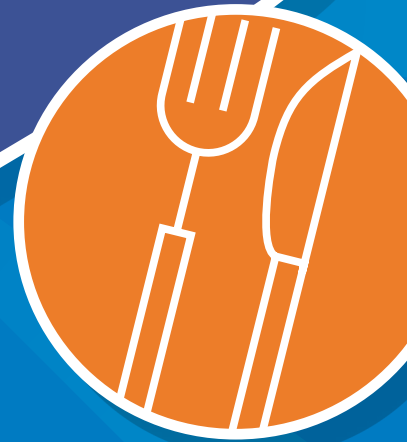
Funded by



Department
for Education



Web: nottinghamshire.gov.uk/HAF
Email: haf@nottscc.gov.uk
Phone: 0115 977 4999 (10am–2pm, Mon–Fri)



**Nottinghamshire
County Council**

W nottinghamshire.gov.uk/HAFprogramme

E haf@nottscc.gov.uk

T 0115 977 4999



facebook.com/nottinghamshire



[@NottsCC](https://twitter.com/NottsCC)