

Heritage



This easy read tells you about the information about heritage available on the Inspire elibrary website.

Inspire Picture Archive



This has thousands of photos of Nottinghamshire in the past.



If you have photos that show what life in Nottinghamshire used to be like, you can add them to the collection.



We will keep the photographs safe.



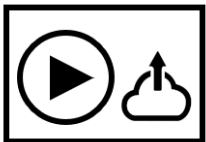
We will keep them in the [Nottinghamshire Archives](#).



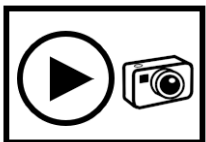
We will also keep them in our [online picture archive](#).



You can [upload your photo here](#) or by using the form on [this webpage](#).



[There is a video that will show you how to upload your photos here.](#)



[There is a showreel of some of the fantastic photos people have sent us here.](#)



We got some money from The National Archives.



We used this money to add a map to the website.



Now when you search on the archive, you can choose to see the pictures on a map.



You can zoom in and out on the map until you find the right image.



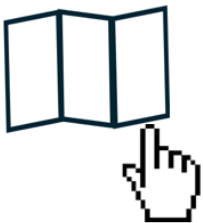
You can also choose to browse through the towns and villages of Nottinghamshire.



On the [archive site](#), you can choose what kind of pictures to search for.



You can click on one of the tiles to look at pictures on a particular topic.



To see your pictures on a map, click on the “map view” icon.



You can select hotspots to zoom in and look at more pictures.

John Johnson Collection



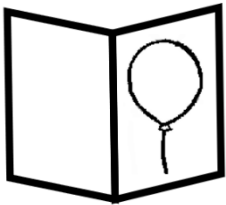
This is a collection of **printed ephemera**. This means things that have been printed and would usually be thrown away.



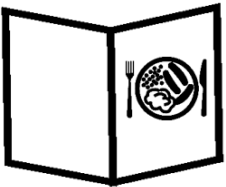
This means things like:



- Adverts



- Greetings cards



- Menus



- Tickets



Looking at these things can tell us about how people in the past lived.



The John Johnson Collection shows how life in Britain has changed over the past 300 years.



[You can search the collection here.](#)

Who's Who and Who Was Who



This is a collection of writing about people around the world who are important to British life.



"Who's Who" has over 32,500 documents written by important people about themselves.



“Who Was Who” has over 100,000 documents written about people who were important in the past.



[You can search the collection here.](#)

Links in this document

Nottinghamshire Archives

inspireculture.org.uk/heritage/archives/

Inspire Picture Archive

inspirepicturearchive.org.uk/

Upload a photo to Inspire Picture Archive

iszy.18a.co/inspirepicturearchive

Heritage

inspireculture.org.uk/reading-information/digital/inspire-heritage/

How to upload your images to the Inspire Picture Archive

youtu.be/_13cNigxAds

Inspire Picture Archive Upload Images Showreel

youtu.be/wk8sDyVdmOs

John Johnson Collection

proquest.com/

Who's Who and Who Was Who

ukwhoswho.com/

For plain English web page version of this information, go to:

[Heritage | Inspire - Culture, Learning, Libraries](https://www.inspireculture.org.uk/heritage/)

<https://www.inspireculture.org.uk/heritage/>

This easy read was first published 21 May 2026.
This information was last updated 21 May 2026.