

# Safe use of a stand aid



This easy read tells you about using a stand aid safely.



This information is from Nottinghamshire County Council's Occupational Therapy Service.

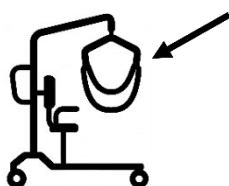


You are being given this information because the person you care for has a stand aid from our Occupational Therapy Service.

## Stand aid checks



The stand aid will be checked regularly by the Occupational Therapist to make sure:



- You can secure and hook slings on.



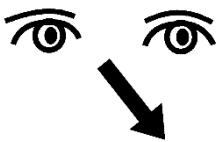
- The person you are caring for is always safely positioned.



- You are comfortable and confident with using the stand aid.



- You are using the stand aid safely.



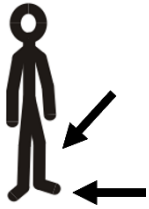
The Occupational Therapist will also check that the person using the stand aid:



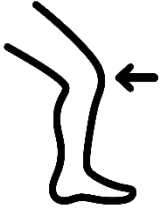
- Understands what is happening and is happy to use the stand aid.



- Is not in pain, or at risk of injury from using the stand aid.



- Can take their weight through their legs and feet.



- Has proper support for their knees.



- Keeps their feet flat on the footplate.



- Is not dragged or lifted under the armpits by the equipment/slings.

## What happens after the checks?



If the checks show it is not safe for you or the person you are caring for to keep using the stand aid, the Occupational Therapist will say you cannot keep using the stand aid and plan to take it away.



If this happens, the Occupational Therapist will talk to you about other options, such as a fully supporting hoist.

## Getting in touch with us



If you have any questions about using the stand aid, or if you need to give back the stand aid if you do not need it anymore, please phone our Customer Service Centre on 0300 500 80 80.



Our Customer Service Centre can answer most of your questions and help with information and form filling.



There are several ways to contact them, including:

**Web:** [Use our online contact form](#)



**Telephone:** 0300 500 80 80



**Text Relay:** 18001 0115 977 4050

People who have hearing or speech difficulties and prefer to communicate via text can use the Text Relay service through the [Relay UK app](#).



**Sign Video**

People who use British Sign Language to communicate can use [the SignVideo app](#) to speak with us.

## Links in this document

**Nottinghamshire County Council – contact us form**

[nottinghamshire.gov.uk/contactform](https://nottinghamshire.gov.uk/contactform)

**Relay UK app**

[relayuk.bt.com/how-to-use-relay-uk/download-app.html](https://relayuk.bt.com/how-to-use-relay-uk/download-app.html)

**SignVideo app**

[signvideo.co.uk/download](https://signvideo.co.uk/download)

---

For the plain English web page version of this information, go to:

<https://www.nottinghamshire.gov.uk/care/adult-social-care/social-care-publications/safe-use-of-stand-aid>

[Occupational therapy service - safe use of a stand aid | Nottinghamshire County Council](#)

This easy read was first published 13 May 2026.  
This information was last updated 13 May 2026.