

**AUTUMN/WINTER
2023/24**

WEEK 1

WEEK COMMENCING

**February 12, March 4,
March 25**



MONDAY



Margherita pizza
new potatoes
vegetable sticks

Gluten Milk Soya

OR



Jacket potato with
baked beans & mixed
salad

DESSERT



Mixed berry mousse
& apple wedge

Milk

OR Fruit

TUESDAY



Spaghetti Bolognese
garlic bread
crunchy vegetables

Gluten Milk Soya Fish

OR



Cheese & tomato panini
vegetable sticks

Milk Gluten Sesame

DESSERT



Flapjack

Gluten

OR Fruit

WEDNESDAY



Southern style
Quornburger in a bun
jacket wedges
carrot sticks & ranch salad

Gluten Egg Milk Sesame

OR



Jacket potato with
cheese, beans or
tuna mayonnaise
& mixed salad

Milk Egg Fish

DESSERT



Cornflake tart & custard

Gluten Sulphur dioxide Milk

OR Fruit

THURSDAY



Roast turkey & stuffing
gravy
roast OR mashed potatoes
cabbage & carrots

Gluten

OR



Fresh bread roll with ham
roast potatoes
carrot & cucumber sticks

Gluten Sesame

DESSERT



Cheese & crackers

Gluten Milk

OR Fruit

FRIDAY



MSC fish cake
oven chips
garden peas & crunchy
veg, tomato ketchup

Gluten Fish

OR



Jacket potato with
cheese & mixed
salad

Milk

DESSERT



Apple muffin

Gluten Egg

OR Fruit

AVAILABLE DAILY: Best of both bread **Gluten, Soya** Seasonal vegetables available daily, Coleslaw **Egg** when served. **Vegetarian meals** available upon request

www.nottinghamshire.gov.uk/schoolmeals



**Nottinghamshire
County Council**

**AUTUMN/WINTER
2023/24**

WEEK 2

WEEK COMMENCING

January 29, February 19,
March 11, April 1



MONDAY



Quorn dippers
new potatoes
sweetcorn
cucumber sticks

Gluten

OR



Jacket potato with
cheese & mixed
salad

Milk

DESSERT



Chocolate sponge
& chocolate sauce

Milk Egg Gluten

OR Fruit

TUESDAY



Nottinghamshire sausage
gravy, Yorkshire pudding
mashed potato
broccoli & carrots

Egg Gluten Milk Sulphur Dioxide

OR



Cheese & tomato panini
vegetable sticks

Gluten Milk Sesame

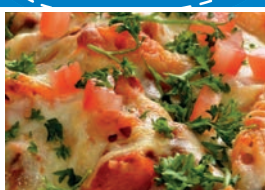
DESSERT



Jelly & fruit

OR Fruit

WEDNESDAY



Cheesy tomato pasta
garlic bread
carrot & cucumber sticks

Gluten Milk Soya

OR



Jacket potato with
tuna mayonnaise &
mixed salad

Egg Fish

DESSERT



Crispy jam tart
& custard

Gluten Sulphur Dioxide Milk

OR Fruit

THURSDAY



Roast pork, stuffing & gravy
Yorkshire pudding
roast OR mashed potato
cabbage & fresh carrots

Milk Egg Gluten

OR



Fresh bread roll with
ham, roast potatoes &
carrot sticks

Gluten Sesame

DESSERT



Honey & oatmeal cookie

Gluten

OR Fruit

FRIDAY



MSC fish finger wrap
Pommes noisette
crunchy veg & sweetcorn
tomato ketchup

Gluten Milk Fish

OR



Jacket potato with
baked beans & mixed
salad

DESSERT



Strawberry ice-cream tub

Milk

OR Fruit

AVAILABLE DAILY: Best of both bread **Gluten, Soya** Seasonal vegetables available daily, Coleslaw **Egg** when served. **Vegetarian meals available upon request**

www.nottinghamshire.gov.uk/schoolmeals



**Nottinghamshire
County Council**

**AUTUMN/WINTER
2023/24**

WEEK 3

WEEK COMMENCING

February 5, February 26,
March 18, April 8



MONDAY



Vegan roll & gravy
baby roast potatoes
garden peas
fresh carrots

Gluten

OR



Jacket potato with
baked beans &
mixed salad

DESSERT



Chocolate brownie

Gluten

OR Fruit

TUESDAY



Meatballs in tomato sauce
with pitta bread
Tilda rice
Crunchy vegetables

Gluten Egg Milk Soya

OR



Cheese & tomato panini
vegetable sticks

Gluten Milk Sesame

DESSERT



Fruit yoghurt

Milk

OR Fruit

WEDNESDAY



Pasta Neapolitan
garlic bread
sweetcorn coblette

Milk Gluten Soya

OR



Jacket potato with
tuna mayonnaise &
mixed salad

Egg Fish

DESSERT

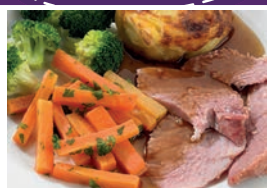


Honey cake
& custard

Milk Egg Gluten

OR Fruit

THURSDAY



Roast Gammon & gravy
Yorkshire pudding
roast OR mashed potatoes
carrots & broccoli

Milk Egg Gluten

OR



Fresh bread roll with
cheese, roast potatoes
& carrot sticks

Milk Gluten Sesame

DESSERT



Fruit cookie

Gluten

OR Fruit

FRIDAY



MSC breaded fish portion
oven chips
garden peas & sweetcorn
tomato ketchup

Gluten Fish

OR



Jacket potato with
baked beans &
mixed salad

DESSERT



Butterscotch tart

Milk Gluten

OR Fruit

AVAILABLE DAILY: Best of both bread **Gluten, Soya** Seasonal vegetables available daily, Coleslaw **Egg** when served. **Vegetarian** meals available upon request

www.nottinghamshire.gov.uk/schoolmeals



**Nottinghamshire
County Council**