

WILDLIFE AND COUNTRYSIDE ACT 1981

THE NOTTINGHAMSHIRE (RUSHCLIFFE AREA) DEFINITIVE MAP AND STATEMENT

THE NOTTINGHAMSHIRE COUNTY COUNCIL
(WEST BRIDGFORD FOOTPATH NO.6 AND NO.9 & BRIDLEWAY NOS. 68-71)
MODIFICATION ORDER 2025

This Order is made by the Nottinghamshire County Council under Section 53(2)(b) of the Wildlife & Countryside Act 1981 ("the Act") because it appears to that Authority that the Nottinghamshire (Rushcliffe Area) Definitive Map and Statement require modification in consequence of the occurrence of an event specified in Section 53(3)(b) of the Act namely: the expiration, in relation to any way in the area to which the map relates, of any period such that the enjoyment by the public of the way during that period raises a presumption that the way has been dedicated as a public path - and also an event specified in Section 53(3)(c)(i) of the Act, namely the discovery by the authority of evidence which (when considered with all other relevant evidence available to them) shows that a right of way which is not shown in the map and statement subsists or is reasonably alleged to subsist over land in the area to which the map relates - and also an event specified in Section 53(3)(c)(ii) of the Act, namely the discovery by the authority of evidence which (when considered with all other relevant evidence available to them) shows that a highway shown in the map and statement as a highway of a particular description ought to be there shown as a highway of a different description - and also an event specified in Section 53(3)(c)(iii) of the Act, namely that other particulars contained in the map and statement require modification.

The Authority have consulted with every Local Authority whose area includes land to which the Order relates.

The Nottinghamshire County Council hereby order that:

1. For the purposes of this Order the relevant date is the 7th April 2025.
2. The Nottinghamshire (Rushcliffe Area) Definitive Map and Statement shall be modified as described in Part I and Part II of the Schedule and shown on Plan A and Plan B attached to this Order.
3. This Order shall take effect on the date it is confirmed and may be cited as "The Nottinghamshire County Council (West Bridgford Footpath No.6 and No.9 & Bridleway Nos. 68-71) Modification Order 2025".

THE COMMON SEAL of THE
NOTTINGHAMSHIRE COUNTY COUNCIL

was hereunto affixed

this 9th day of July 2025

in the presence of:-

AUTHORISED SIGNATORY

S. P. [Signature]

)
)
)
)
)
)
)
)
)
)



SEAL REGISTER
NO: 51297

THE NOTTINGHAMSHIRE COUNTY COUNCIL
(WEST BRIDGFORD FOOTPATH NO.6 AND NO.9 & BRIDLEWAY NOS. 68-71)
MODIFICATION ORDER 2025

SCHEDULE

PART I

Modification of Definitive Map

Description of the path or way to be added

West Bridgford Bridleway No.68

From Point A on the Order Plan (grid reference SK 5823 3830) at the junction with West Bridgford Footpath No.12 (Trentside North) and proceeding in a generally south-south-westerly direction for a distance of approximately 160 metres, with a width of between 2.3 and 5 metres, to Point D (SK5819 3817) at the junction with West Bridgford Bridleway No.69.

West Bridgford Bridleway No.69

From Point E (SK 5821 3815) at the junction with Loughborough Road, West Bridgford and proceeding in a generally north-westerly then south-south-westerly direction for a distance of approximately 583 metres, with a width of between 2.9 and 5.5 metres, to Point H (SK 5800 3765) at the junction with the highway extent of Welbeck Road, West Bridgford.

West Bridgford Bridleway No.70

From Point I (SK 5801 3764) at the junction with the highway extent of Welbeck Road and proceeding in a generally west-north-westerly, then south-south-westerly direction for a distance of approximately 73 metres, with a width of between 2.7 and 3.1 metres, to Point K (SK 5797 3759) at the junction with West Bridgford Footpath No.6 and West Bridgford Bridleway No.71.

Description of path or way to be upgraded

West Bridgford Bridleway No.71

From Point K (SK 5797 3759) at the junction with West Bridgford Footpath No.6 and West Bridgford Bridleway No.70 and proceeding in a west-south-westerly, then westerly direction for a distance of approximately 575 metres to Point L (SK 5744 3749) at the junction with West Bridgford Footpath No.9 then proceeding in a generally north-westerly direction for a distance of 495 metres to Point M (SK 5701 3773) at the junction with Coronation Avenue/tramway, and with a width of 3 metres throughout its length,

THE NOTTINGHAMSHIRE COUNTY COUNCIL
(WEST BRIDGFORD FOOTPATH NO.6 AND NO.9 & BRIDLEWAY NOS. 68-71)
MODIFICATION ORDER 2025

PART II

Modification of Definitive Statement

Variation of particulars of path or way

The Definitive Statement for the Parish of West Bridgford shall be amended as follows:

Status and Path No.	Footpath 6
O. S. Sheet No:	SK 53 NE
Approx Length:	48 metres
Width:	Tapers - 2.6 metres at start to 3 metres at end.
Starting Point:	SK 5799 3754 The junction with Wilford Lane.
Finishing Point:	SK 5797 3759 The junction with West Bridgford Bridleway Nos. 70 and 71.
General Description:	Proceeds in a north-north-westerly direction to the riverside. Tarmacadam surface throughout the whole length.
Legal Event / Remarks	Formerly recorded as part of a footpath extending along riverbank to Wilford. Amended by The Nottinghamshire County Council (West Bridgford Footpath No.6 and No.9 & Bridleway Nos. 68-71) Modification Order 2025.

Status and Path No.	Footpath 9
O. S. Sheet No:	SK 53 NE
Approx Length:	825 metres
Width:	2 metres minimum between points SK 5689 3720 and SK 5727 3737 as specified in the 2010 Stopping Up Order, otherwise unspecified.
Starting Point:	SK 5689 3720 The junction with West Bridgford Footpath No. 24.
Finishing Point:	SK 5744 3749 The junction with West Bridgford Bridleway No. 71 on flood bank of River Trent.
General Description:	Proceeds in a generally easterly, east-north-easterly and generally north-easterly direction on the grass and earth surfaces of a path adjacent to sports pitches, with tarmac surfaces crossing Gresham Park Road and finally on the grass and earth surfaces of a path adjacent to the Trent Pastures Site of Interest for Nature Conservation.
Legal Event / Remarks	Awarded 1766. Rushcliffe Borough Council West Bridgford Footpath No.9 Public Path Stopping Up Order 2010 (confirmed 31/08/2010). Termini description amended by The Nottinghamshire County Council (West Bridgford Footpath No.6 and No.9 & Bridleway Nos. 68-71) Modification Order 2025.

THE NOTTINGHAMSHIRE COUNTY COUNCIL
(WEST BRIDGFORD FOOTPATH NO.6 AND NO.9 & BRIDLEWAY NOS. 68-71)
MODIFICATION ORDER 2025

Status and Path No.	Bridleway 68
O. S. Sheet No:	SK 53 NE
Approx Length:	160 metres
Width:	2.3 metres between points SK 5823 3830 and SK 5820 3822 5.0 metres between points SK 5820 3822 and SK 5818 3820 under Trent Bridge. 2.3 metres between points SK5818 3820 and SK 5819 3817.
Starting Point:	SK 5823 3830 The junction with West Bridgford Footpath No. 12 (Trentside North).
Finishing Point:	SK 5819 3817 The junction with West Bridgford Bridleway No. 69.
General Description:	Proceeds in a generally south-south-westerly direction on a tarmacadam path alongside the River Trent. Runs through an archway under Trent Bridge.
Legal Event / Remarks	The Nottinghamshire County Council (West Bridgford Footpath No.6 and No.9 & Bridleway Nos. 68-71) Modification Order 2025.

Status and Path No.	Bridleway 69
O. S. Sheet No:	SK53NE
Approx Length:	583 metres
Width:	5.5 metres between points SK 5821 3815 and SK 5805 3784 5 metres between points SK 5805 3784) and SK 5800 3766 2.9 metres between SK 5800 3766 and SK 5800 3765.
Starting Point:	SK 5821 3815 The junction with Loughborough Road West Bridgford.
Finishing Point:	SK 5800 3765 The junction with the highway extent of Welbeck Road, West Bridgford
General Description:	Proceeds in a generally west-north-westerly, then south-south-westerly direction on a tarmacadam path running alongside County Hall and the River Trent.
Legal Event / Remarks	The Nottinghamshire County Council (West Bridgford Footpath No.6 and No.9 & Bridleway Nos. 68-71) Modification Order 2025.

THE NOTTINGHAMSHIRE COUNTY COUNCIL
(WEST BRIDGFORD FOOTPATH NO.6 AND NO.9 & BRIDLEWAY NOS. 68-71)
MODIFICATION ORDER 2025


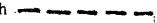


Status and Path No.	Bridleway 70
O. S. Sheet No:	SK 53 NE
Approx Length:	73 metres
Width:	3.1 metres between points SK 5801 3764 and SK 5800 3765 2.7 metres between points SK 5800 3765 and SK 5797 3759.
Starting Point:	SK 5801 3764 The junction with the highway extent of Welbeck Road.
Finishing Point:	SK 5797 3759 The junction with West Bridgford Footpath No. 6 and West Bridgford Bridleway No. 71.
General Description:	Starts at flood gate then proceeds in a generally west-north-westerly direction for 10 metres to a point, SK 5800 3765, then continues in a south-south-westerly direction for 63 metres, on a tarmacadam surface throughout the whole length.
Legal Event / Remarks	Limitation: Flood gate at the starting point, SK 5801 3764. The Nottinghamshire County Council (West Bridgford Footpath No.6 and No.9 & Bridleway Nos. 68-71) Modification Order 2025.

Status and Path No.	Bridleway 71
O. S. Sheet No:	SK 53 NE
Approx Length:	1,070 metres
Width:	3 metres
Starting Point:	SK 5797 3759 The junction with West Bridgford Bridleway No. 70 and West Bridgford Footpath No. 6.
Finishing Point:	SK 5701 3773 The junction with Coronation Avenue/Tramway.
General Description:	Proceeds along the top of the flood bank, on a tarmacadam surface throughout the whole length, in a west-south-westerly, then westerly direction for a distance of approximately 575 metres to a point, SK 5744 3749, at the junction with West Bridgford Footpath No.9, then continues in a generally north-westerly direction for a distance of 495 metres.
Legal Event / Remarks	Wilford Inclosure Award 1766 The Nottinghamshire Express Transit System Order 2009 – came into force 09/06/2009 Upgraded from West Bridgford Footpath No. 6) by The Nottinghamshire County Council (West Bridgford Footpath No.6 and No.9 & Bridleway Nos. 68-71) Modification Order 2025.

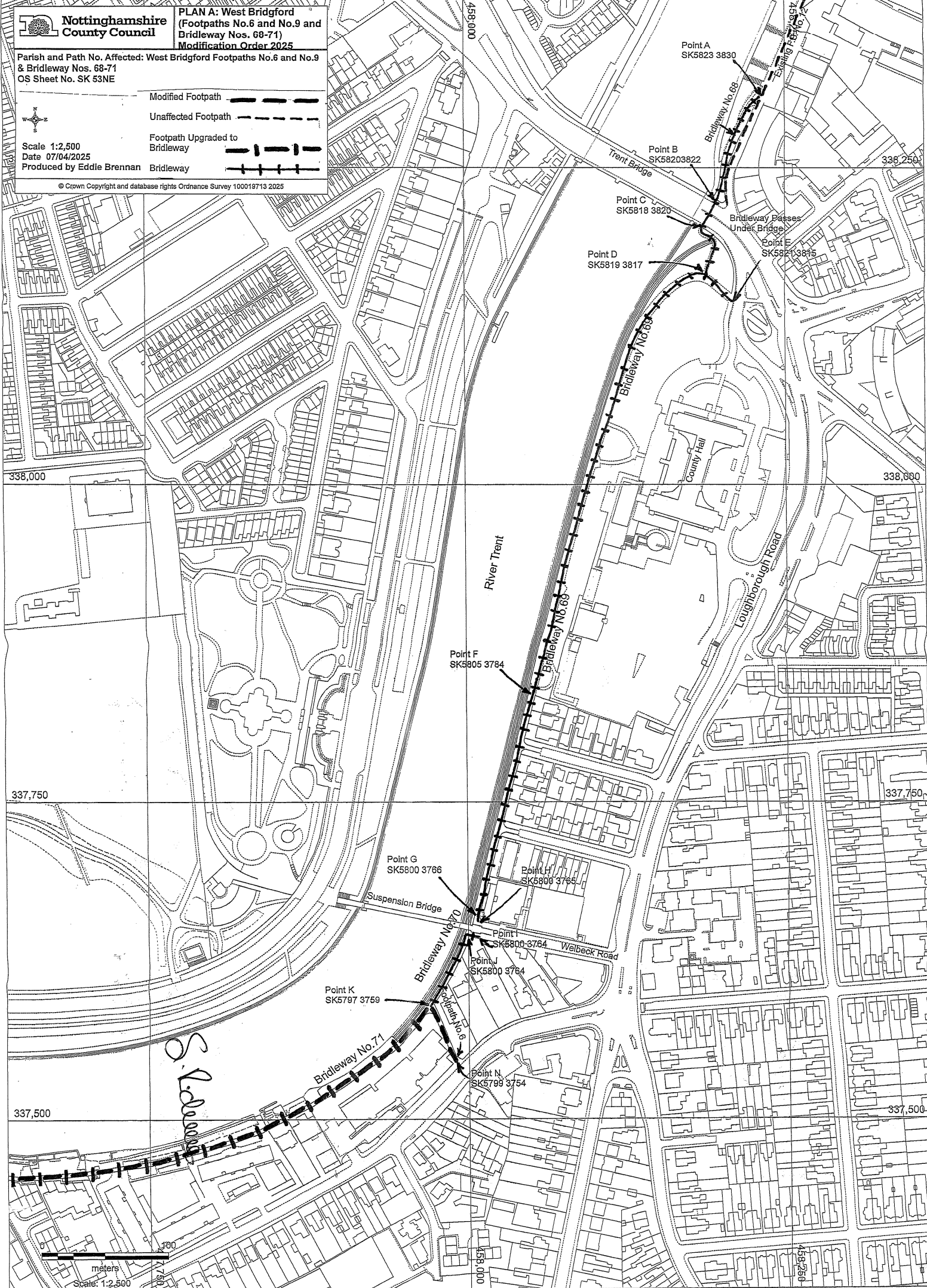
Parish and Path No. Affected: West Bridgford Footpaths No.6 and No.9
& Bridleway Nos. 68-71
OS Sheet No. SK 53NE

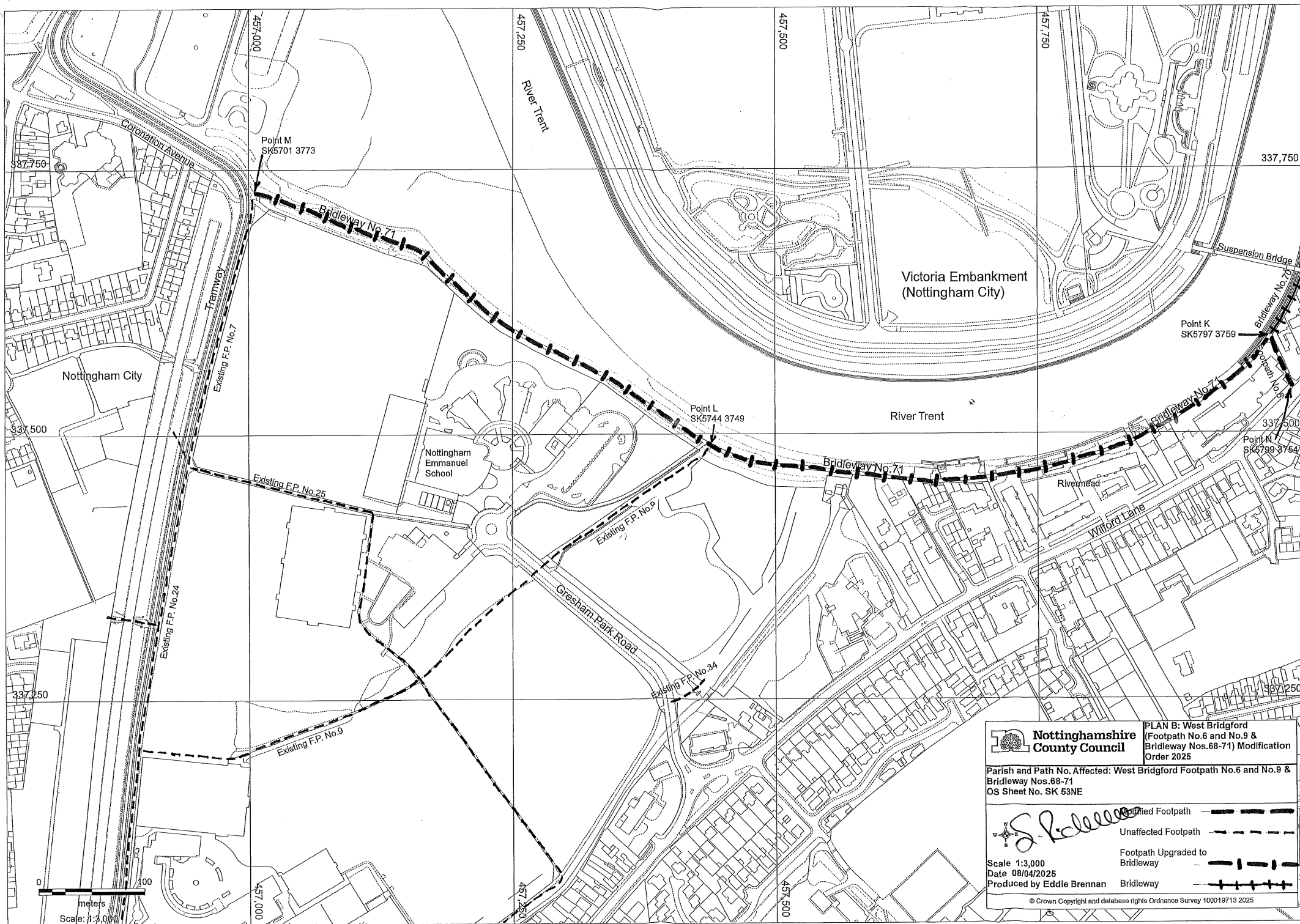


Scale 1:2,500
Date 07/04/2025
Produced by Eddie Brennan

Modified Footpath 
Unaffected Footpath 
Footpath Upgraded to
Bridleway 
Bridleway 

© Crown Copyright and database rights Ordnance Survey 100019713 2025





**Nottinghamshire
County Council**

**PLAN B: West Bridgford
(Footpath No.6 and No.9 &
Bridleway Nos.68-71) Modification
Order 2025**

Parish and Path No. Affected: West Bridgford Footpath No.6 and No.9 &
Bridleway Nos.68-71
OS Sheet No. SK 53NE

S. L. L.

Scale 1:3,000
Date 08/04/2025
Produced by Eddie Brennan

- | | |
|-----------------------------------|--|
| Proposed Footpath | |
| Unaffected Footpath | |
| Footpath Upgraded to
Bridleway | |
| Bridleway | |

© Crown Copyright and database rights Ordnance Survey 100019713 2025