



**Nottinghamshire
County Council**

TEMPORARY PATH CLOSURE

Colston Bassett Footpath No.8



Scale Scale: 1:14,000

Date 22/04/2026

Produced by Neil Campbell

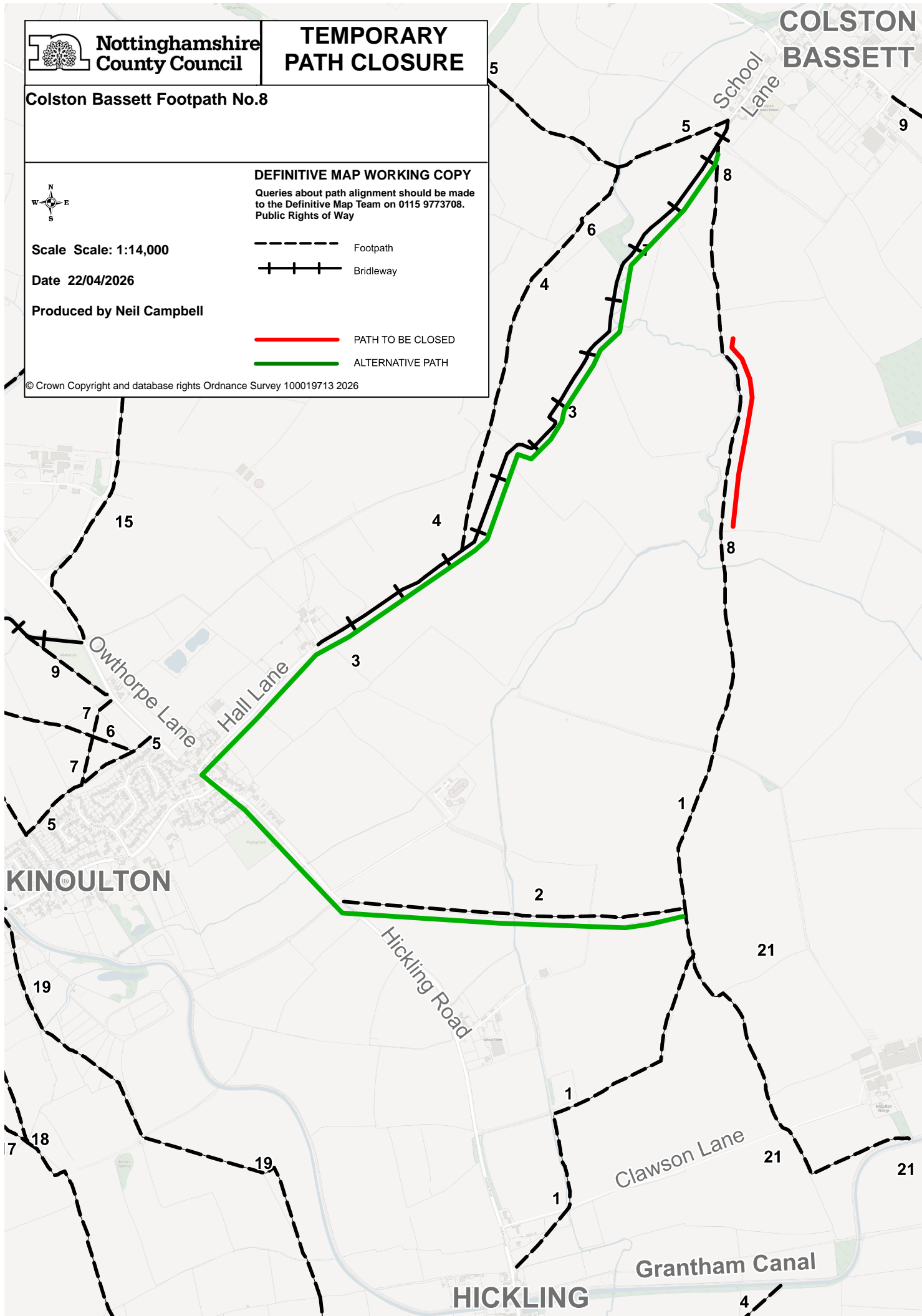
DEFINITIVE MAP WORKING COPY

Queries about path alignment should be made to the Definitive Map Team on 0115 9773708.
Public Rights of Way

--- Footpath
-|- Bridleway

— PATH TO BE CLOSED
— ALTERNATIVE PATH

© Crown Copyright and database rights Ordnance Survey 100019713 2026



**COLSTON
BASSETT**

School Lane

KINOULTON

HICKLING

Grantham Canal