

WILDLIFE AND COUNTRYSIDE ACT 1981

THE NOTTINGHAMSHIRE (BASSETLAW DISTRICT) DEFINITIVE MAP AND  
STATEMENT

THE NOTTINGHAMSHIRE COUNTY COUNCIL  
(MARNHAM FOOTPATH NO.12) MODIFICATION ORDER 2026

This Order is made by the Nottinghamshire County Council under Section 53(2)(b) of the Wildlife & Countryside Act 1981 ("the Act") because it appears to that Authority that the Nottinghamshire (Bassetlaw District) Definitive Map and Statement require modification in consequence of the occurrence of an event specified in Section 53(3)(c)(i) of the Act, namely: the discovery by the authority of evidence which (when considered with all other relevant evidence available to them) shows that a right of way which is not shown in the map and statement subsists or is reasonably alleged to subsist over land in the area to which the map relates, being a right of way such that the land over which the right subsists is a public path; and also

The Authority have consulted with every Local Authority whose area includes land to which the Order relates. The Nottinghamshire County Council hereby order that:

1. For the purposes of this Order the relevant date is Monday 1<sup>st</sup> December 2025.
2. The Nottinghamshire (Bassetlaw District) Definitive map and statement shall be modified as described in Part I and Part II of the Schedule and shown on the plan contained in this order ("the Order Plan").
3. This Order shall take effect on the date it is confirmed and may be cited as "The Nottinghamshire County Council (Marnham Footpath No.12) Modification Order 2026".

THE COMMON SEAL of THE  
NOTTINGHAMSHIRE COUNTY COUNCIL

was hereunto affixed

this 14th day of January 2026

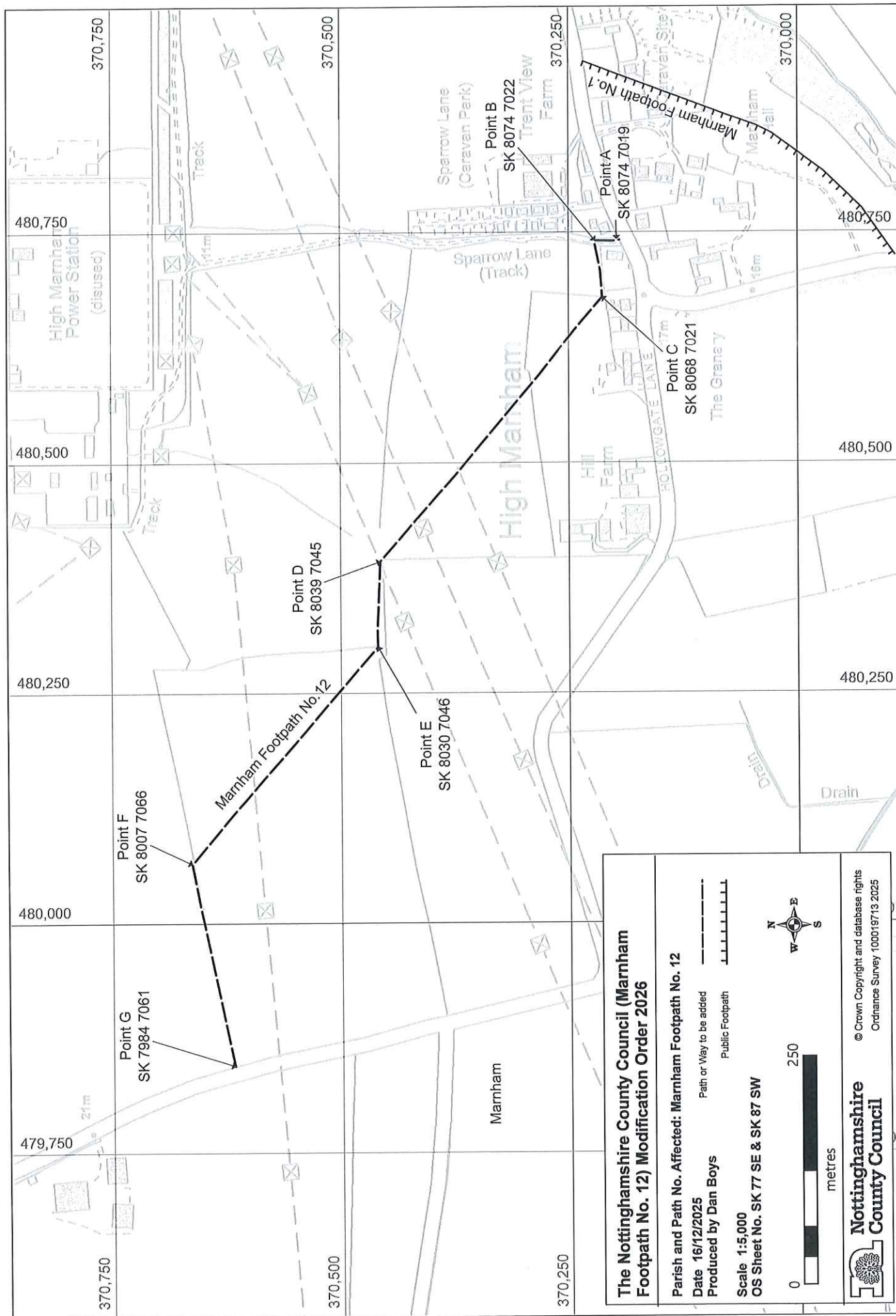
in the presence of:-



AUTHORISED SIGNATORY



SEAL REGISTER  
NO: 51682





THE NOTTINGHAMSHIRE COUNTY COUNCIL  
(MARNHAM FOOTPATH NO.12) MODIFICATION ORDER 2026

SCHEDULE

PART I

Modification of Definitive Map

Description of the Path or Way to be added

**Marnham Footpath No.12**

Commences from the junction with Hollowgate Lane, High Marnham at point SK 8074 7019 (point A on the Order Plan) and then proceeds with no limitations for approximately 30 metres between a boundary hedgerow to the west and a boundary fence to the east in a generally northerly direction along Sparrow Lane to a point SK 8074 7022 (point B on the Order Plan) and then proceeds with no limitations for approximately 60 metres in a generally westerly direction alongside a southern field boundary to a point SK 8068 7021 (point C on the Order Plan) at a field boundary hedgerow and then proceeds cross-field with no limitations for approximately 375 metres in a generally northwesterly direction to a point SK 8039 7045 (point D on the Order Plan) north of Hill Farm and then proceeds with no limitations for approximately 100 metres in a generally westerly direction alongside a southern field boundary to a point SK 8030 7046 (point E on the Order Plan) and then proceeds with no limitations cross-field for approximately 310 metres in a generally northwesterly direction to a point SK 8007 7066 (point F on the Order Plan) and then proceeds with no limitations for approximately 225 metres in a generally westerly direction alongside a southern field boundary to a point SK 7984 7061 (point G on the Order Plan) at the junction with Dunham Road and with a width of 7 metres between points A and B and with a width of 1.8 metres between points B and G.

THE NOTTINGHAMSHIRE COUNTY COUNCIL  
(MARNHAM FOOTPATH NO.12) MODIFICATION ORDER 2026

PART II

Modification of Definitive Statement

Description of the Path or Way to be added

**A new Statement should be recorded for Marnham Footpath No.12**

Commences from SK 8074 7019 at the junction with Hollowgate Lane, High Marnham and proceeds in a generally northerly direction along Sparrow Lane on crushed stone surface with grass verges and then in a generally westerly then northwesterly then westerly then northwesterly and finally in a generally westerly direction on a grass and earth surface to SK 7984 7061 at the junction with Dunham Road.

Approx length:	1100m
Approx Width:	7 metres between SK 8074 7019 and SK 8074 7022 1.8 metres between SK 8074 7022 SK 7984 7061
Limitations:	-