

# WE ARE NOTTINGHAMSHIRE PEOPLE MAKE OUR PLACE

SUCCESS - INVESTMENT – OPPORTUNITIES

EAST MIDLANDS PARTNER



# HOME TO PIONEERS, ENGINEERS AND INNOVATORS

GENERATING WORLD CLASS INDUSTRIES SINCE THE 16<sup>th</sup> CENTURY

Invented the revolutionary Framework knitting machine.

Originated theories of magnetism, and wave theory in sound and light

Created the World's First Computer Programme.

Opened the first herbalist store and started "the weekend".

Built an elaborate underground tunnels system under the Welbeck estate.

The first pressured water works built as engineering excellence for steam.

Created the first Traffic Light system for safer transport.

● 1563 - 1564

William Lee

Revolutionised the UK Textiles Industry, the machines are still in use today.



● 1793 - 1841

George Green

The son of a semi-literate baker, taught himself maths and physics



● 1815 - 1852

Ada Lovelace

Developed in collaboration with the inventor of the calculator and computer.



● 1815 - 1860

John Boot

Agricultural worker who later founded BOOTS Pure Drug Company.



● 1800-1879

Lord John Bentick

5<sup>th</sup> Duke of Portland, British Army officer and peer.



● 1807-1893

Thomas Hawksley

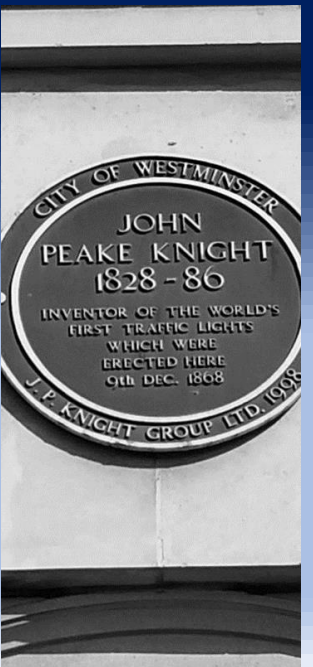
Papplewick pumping station provide clean drinking water to the city of Nottingham.



● 1828-1886

John Peake Knight

Contributions to railway travel with the air brake, safer carriages and Pullman cars.





# WE ARE SMART SHAPERS

PEOPLE MAKE OUR PLACE

Founded in Nottingham, Raleigh was the world's largest bicycle maker.

Mansfield Colliery pit. A workforce so large, Forest Town was built.

Created Tarmac, as a cleaner road surface, installed in West Bridgford.

Invented the first domestic video tape recorder.

Invented the magnetic resonance imaging (MRI) scanner.

Developed ibuprofen whilst researching reducing arthritis.

The first UK autonomous house created in historic Southwell.

● 1848 - 1921

Sir Frank Boden

Even during the second world war bikes still made alongside munitions.



● 1854-1926

Charles Pierrepont

Leased land to the Bolsover Mining Company, owned by the Duke of Portland.



● 1901

Edgar Hooley

Leased land to the Bolsover Mining Company, owned by the Duke of Portland



● 1957

Rutherford and Turner

Met on the school football field whilst playing for opposing teams.



● 1933-2017

Sir Peter Mansfield

Left school at 15 to work at a printing company and join the army.



● 1983-2019

Dr Stewart Adams

Awarded an OBE for services to science in 1987.



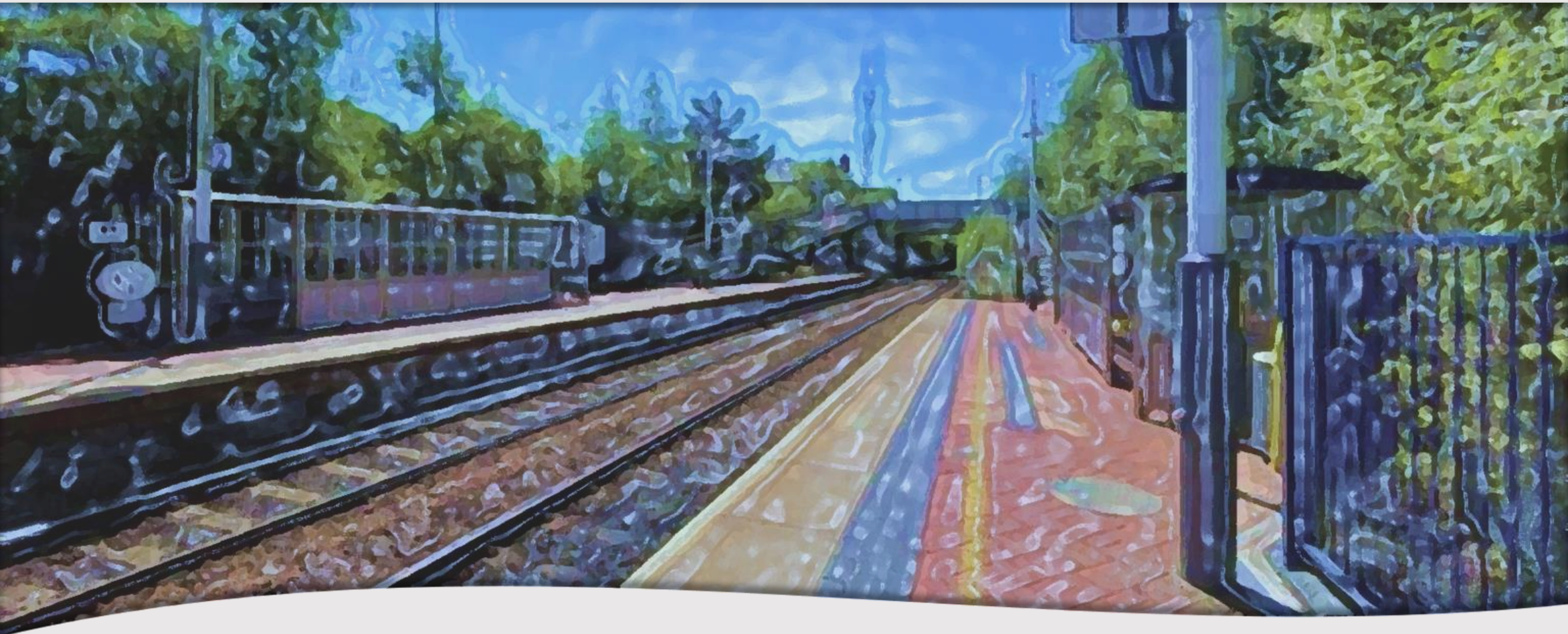
● 1993 - Today

Brenda and Robert Vale

Their work is widely recognized internationally and for green building.







## WE ARE INVESTING IN PEOPLE AND COLLABORATION

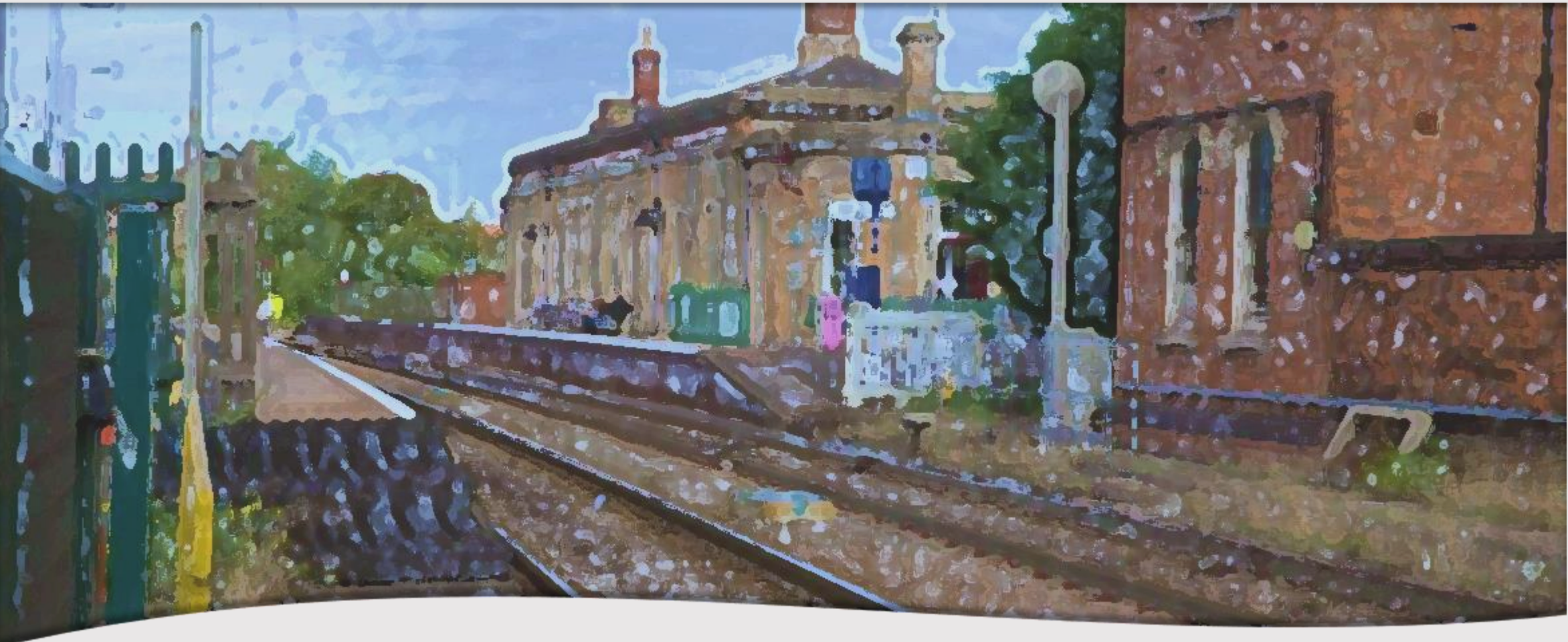
OVER £286 MILLION THIS YEAR INTO PEOPLE,  
RESEARCH AND DEVELOPMENT.

Plus over 20 family hub networks coming soon.

We work with our communities, industry, universities and colleges, to deliver talent, research and innovation.

**Education and Research:** Renowned for contributions to drug discovery and development we have many pharmaceutical companies, research institutions, and life science startups.





## WE ARE INVESTING IN BUSINESS GROWTH AND SUPPORT

WE PROVIDE OVER 18,000 HOURS OF TAILORED  
BUSINESSES SUPPORT ANNUALLY.

**Plus £17.5 million in business support in 2023.**

With access to funding and compliance support, we host regular network and advice drop in events.

**Advanced Manufacturing:** Nottinghamshire boasts a strong advanced manufacturing sector, with companies specializing in precision engineering, aerospace, and automotive.



**BUSINESS SUPPORT  
SERVICE**

**Trading Standards**  
Commercial Services





## SPOTLIGHT ON STEM CENTRAL



### [AUTOMATED MANUFACTURING AND DISTRIBUTION](#)



#### INTERNATIONAL CENTRE OF EXCELLENCE

**£100 million research, innovation and technology park at Sutton Parkway.**

3,500 square metres of latest technologies, research, development, higher skills and expert practices. Strategically located on manufacturing routes.

### [CONSTRUCTION CENTRE](#)



#### OUTSTANDING SUSTAINABLE CONSTRUCTION

**Development underway for some of the best facilities in the sector.**

Top facilities, 2 sites. Bricklaying, carpentry, joinery, plastering, building services (electrical installation, plumbing and heating) and more.

### [ENGINEERING INNOVATION CENTRE](#)



#### REGIONAL SKILLS HUB

**Specialist construction skills in a rapidly changing industry.**

Live outdoor site to compliment the Construction Centre. Civil, Mechanical, electrical, transport, geotechnical and environmental engineering.

### [KIRKBY LONG TERM PLAN](#)



#### COMING SOON

**Up to £20 million of funding through the Long-Term Plan for Towns.**

Kirkby Town Board will prepare a long-term plan for the area to be submitted for Government approval from summer 2024.



## SMART MANSFIELD

### DIGITAL BOOST FOR LIFE, WORK AND LEISURE

**£1 million new low power and long range area wide networks.**

Powering smart technologies and better connectivity for all, operational benefits and support to new products and services.



## SUSTAINABLE URBAN DRAINAGE PILOTS

### DOING RIGHT BY OUR WATER

**£76 million on national pilots for nature-based flood resilience solutions.**

The largest project of its kind in the country to store around 23 Olympic-sized swimming pools of surface water and protect local. Plus 390 new jobs.



## MANSFIELD CONNECT

### MULTI-AGENCY LOW CARBON HUB

**A one-stop shop for health care, council services, education and business.**

New premises. Public services, space for private sector occupiers, food and drink outlets and an exemplar in retrofit and modern construction skills.



## FUTURE TECHNOLOGY

### NEW TECHNOLOGIES CENTRE

**£8.86 million to enable colleges, university and businesses to share expertise.**

New technology for product and process innovation, and adoption to make business competitive and more profitable. Supported by our local University.



## SPOTLIGHT ON STEM CENTRAL



## SPOTLIGHT ON STEM CENTRAL



## BERRY HILL PARK

### A DESTINATION PARK

Visitor centre, café and event performance space and more.

Set in 25 hectares of parkland with a diverse mix of woodlands, mown and acid grassland and wildflower meadows. Net gain and other investment.



## LINDHURST BERRY HILL

### A £250 MILLION INVESTMENT

Community and commerce for over £100 million to the annual economy.

1,700 homes, 4,000 jobs, 190,000 square metres commercial floor space, health, care and education facilities, hotel, offices and greenspace.



## BELLAMY OAK REGENERATION

### COMING SOON

A new youth and community hub and sustainable transport.

22 eco-friendly homes, village green, retail outlets, convenience store, café, takeaway, community orchard, park, learn-to-ride cycle track and transport.



## MANSFIELD LONG TERM PLAN

### COMING SOON

Up to £20 million of funding through the Long-Term Plan for Towns.

Mansfield Town Board will prepare a long-term plan for the area to be submitted for Government approval from summer 2024.





## TOP WIGHAY

### SUSTAINABLE GROWTH EXEMPLAR

**New village to boost economy by over £873 million over 10 years.**

13 acres of new employment, 805 homes, local centre, primary school, infrastructure, open space, sustainable urban drainage and transport.



## HAZELFORD WAY AND STATION ROAD

### BREWERS CORNER

**Light industrial units, near to [Newstead and Annersley Country Park](#) and M1.**

Newstead Train Station and Cycle Route 6 plus 40 homes. Countryside and some of the best intimate [gigs](#) in the East Midlands on the doorstep.



## PAPPLEWICK PUMPING STATION

### SPECTACULAR, SCHEDULED MONUMENT

**Industrial museum and unique wedding and performance events venue.**

A one of kind venue hosts regular steaming events, weddings and education visits to continue the preservation of this site for future generations.



## HUCKNALL TOWN

### COMING SOON

**Ready to deliver £9.2 million towards regeneration.**

Centred around three main themes: Skills and Economic Regeneration, Cultural and Heritage Gateway, and Hucknall Town Centre Access.



## SPOTLIGHT ON STEM CENTRAL



## SPOTLIGHT ON STEM CENTRAL



### SHERWOOD OBSERVATORY

#### STATE OF THE ART LEARNING

A nationally significant facility for sustainable STEM, business, history and art. New exhibition area, STEM teaching, planetarium, meeting rooms, and cafe. A canvas for musicians and artists, biodiversity and sustainable travel.



### PARK LANE

#### SME INNOVATIONS

From a training academy to an automotive repair business.

Over 14 businesses on site. Most units on the business park are occupied by small and micro-sized business.



### KINGS MILL RESERVOIR LEISURE AND BUSINESS

#### FLAGSHIP LEISURE AND BUSINESS CATALYST

New [water sports](#) boathouse for restaurant, events, training and meetings.

Views of the water, a 136-space car park, biodiversity, permeable surfaces, habitat creation, a heritage centre, and restoration of a historic viaduct.



### PENNIMENT APEX

#### GREEN MANUFACTURING HUB

392,000 square feet. manufacturing hub with 500 new jobs.

Five high-specification units ranging from 30,000 to 150,000 square feet, Each building is designed with sustainability in mind.



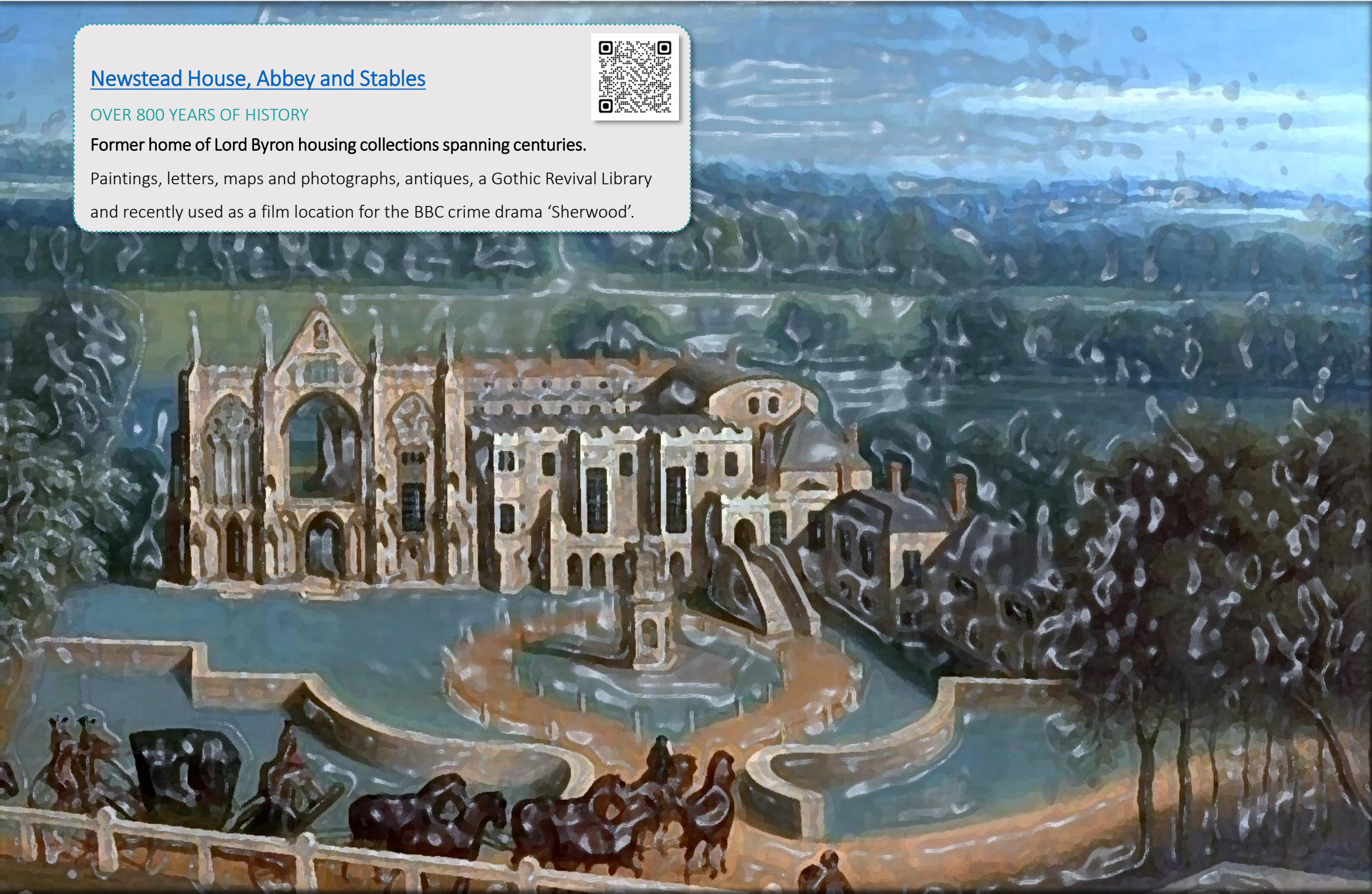


## [Newstead House, Abbey and Stables](#)

OVER 800 YEARS OF HISTORY

Former home of Lord Byron housing collections spanning centuries.

Paintings, letters, maps and photographs, antiques, a Gothic Revival Library and recently used as a film location for the BBC crime drama 'Sherwood'.





## SPOTLIGHT ON EAST NOTTS CONNECT



### INTERNATIONAL AIR AND SPACE TRAINING INSTITUTE

#### OUT OF THIS WORLD TRAINING

Qualified talent and experience for aviation and space growth sectors.

All levels training supported by the Royal Air Force and defence and civilian industry. Strategic location: ready access to major road and mainline rail.



### A1/A46 SOUTHERN LINK ROAD AND HOMES

#### TRANSFORMATIVE GROWTH

Links arterial inter-region roads, 3,150 new homes and 49 hectares for jobs.

41 hectares open space, sports pitches, a pavilion, greenspace, community building, cycle networks, creche, school, local centre, and health centre.



### NEWARK CONSTRUCTION COLLEGE

#### INDUSTRY LED SKILLS

Lincoln College Group as part of Newark College, opened in 2021.

New training opportunities for young people and Adults in Newark for high qualifications in plumbing, gas safety, joinery, brick laying and stone masonry.



### NEWARK LONG TERM PLAN

#### COMING SOON

Up to £20 million of funding through the Long-Term Plan for Towns .

Newark Town Board will prepare a long-term plan for the area to be submitted for Government approval from summer 2024.





## NEWARK HEART

### CULTURE, EVENTS AND PUBLIC REALM

To create and a regular [programme of events](#) in the historic market place.

To include public realm enhancements, more seating, more greenery and a highly attractive entrance to the town centre.



## 32 STODMAN STREET

### HOMES IN THE HEART OF NEWARK

New town centre housing offer with an eye-catching and vibrant design.

To transform a former Marks and Spencer building into an attractive hub with retail units and up to 29 high-quality homes.



## CASTLE GATEHOUSE

### ROMANESQUE RESTORATION

Ground-breaking project to reinstate Newark Castle's spectacular entrance.

Named by Historic England as the most complete example in England, the gatehouse has bid to the Towns Fund and National Lottery Heritage Fund.



## ST MARKS PLACE

### COMING SOON

At one third of the town centre retail space, this is a prime investment.

We are exploring options for a major town centre redevelopment and funding of a feasibility study for St Marks Place, Newark.



## SPOTLIGHT ON EAST NOTTS CONNECT



## SPOTLIGHT ON EAST NOTTS CONNECT



## BEACON BUSINESS INNOVATION CENTRE

### A PRESTIGIOUS ADDRESS

**A fantastic range office spaces, facilities and business support to thrive.**

No need to give a second thought to energy bills, broadband, business rates or building insurance. Inclusive packages free you to focus on business.



## BEACON HILL RETAIL

### TRADE PARK, NEWARK

East of Newark Town, easy access to the A1 and A46 intercity logistics routes.

New Retail and Trade counter development providing space from 4,350 square feet up to 20,000 square feet. Vehicular access to the rear and front.



## BRUNEL BUSINESS PARK

### NEWARK COMMERCE

**Unique design and build opportunities in the commercial heart of Newark.**

Prime position, near town and by A1, A46 and A17. Suits office, industrial and mixed commercial (subject to planning). Units from 5,000 square feet.



## FERNWOOD BUSINESS PARK

### BESPOKE BUSINESS

**104 acres, strategically located, by the A1 close to Newark town centre.**

Currently includes a care home, public house, five detached office buildings, a new Free School, a gym/fitness centre and local physiotherapist premises.





## BINGHAM NEWTON AND NORTH ENTERPRISE

### STATE-OF-THE-ART JOBS

**£16 million arena: 5,500 square metre leisure centre and employment units.**

Approx. 22ha of land for employment across 2 sites. Some existing units retained, including heritage Former RAF hangars.



## BUNNY BRICKWORKS

### A RURAL STRONGHOLD

**Countryside village location close to A453 and A52 trans-midlands routes.**

On the A60, seven miles from Nottingham. Up to 5,600sqm of employment units and homes, associated infrastructure, access, parking and landscape.



## HOLLYGATE 46

### COTGRAVE COLLIERY LIVING AND WORKING

**An £8 million regeneration. Phase 2 offers 3.8ha of employment land.**

Phase 1 of 460 new homes is completed, alongside a new community hub, nine office suites in a new Business Hub and 15 new employment units.



## COTGRAVE COUNTY PARK

### BIODIVERSITY GAINS

**Plans to designate [five new Local Nature Reserves](#).**

The Friends of Cotgrave Country Park are working to improve biodiversity in the park. Construction of a Sand Martin Bank and two Bird Hides.



## SPOTLIGHT ON EAST NOTTS CONNECT







**WE ARE INVESTING  
IN INFRASTRUCTURE,  
AND HEALTHY  
TRAVEL**

**OVER £773 MILLION AND RISING TOWARDS MAJOR  
TRANSPORT ROUTES AND SUSTAINABLE TRAVEL.**

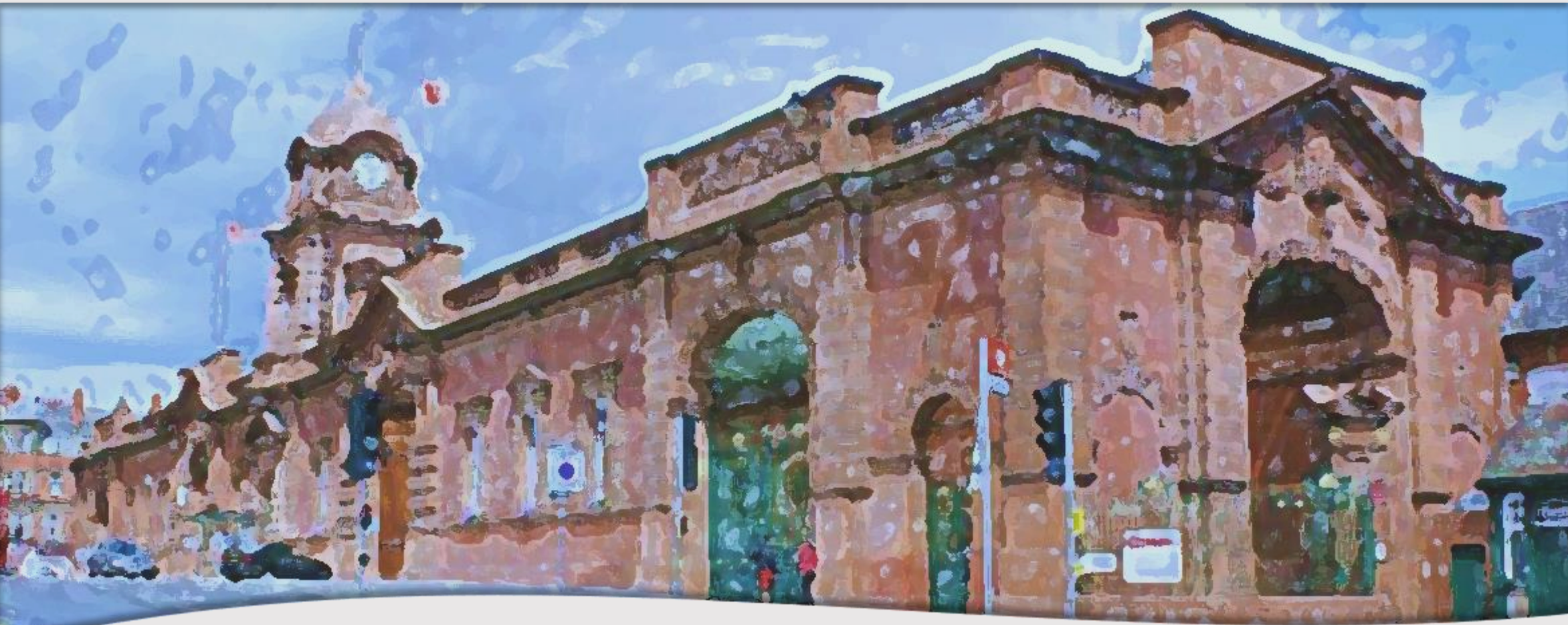
**We are one of the best connected places in the UK.**

We are investing in bus networks, electric vehicle, demand responsive transport, active travel and more.

**Logistics and Distribution:** With excellent transport links, Nottinghamshire plays a crucial role in logistics and distribution. Major transport networks, stations and hubs facilitate efficient movement of people and goods.







**WE ARE INVESTING  
IN DIGITAL  
CONNECTIVITY AND  
INNOVATION**

**OVER £76 MILLION FOR HIGH-SPEED INTERNET,  
GIGABIT CAPABILITY AND CONNECTIVITY.**

**5G, artificial intelligence, digital twins, robotics, smart  
automation pilots and more.**

We cultivate a vibrant, innovative, ecosystem and empower business growth to excel in rapidly changing industries.

**Creative and Digital Industries:** We are home to many digital agencies, game developers, and creative studios. Our collaborations lead to breakthroughs such as in robotics, smart automation and distribution, artificial intelligence and materials science.



## SPOTLIGHT ON M1 MOBILITY WEST



### PANNETONI PARK

NOTTINGHAM 95

Superior logistic warehouse ideally located for regional distribution, at J26.

Direct access to the M1 and A610 serving major logistics markets in the Midlands and beyond. Approx. 40 million customers within four hours.

### HARRIER PARK

AN ENVIRONMENT WITH IDENTITY

67-acres with wetlands, paths, cycleways and play area, at J26 - 27.

With major transport links and SNIC wildflower meadow, Rolls Royce are already here. 0,000 to 300,000 square feet. Buy or let, freehold or leasehold.

### SHERWOOD BUSINESS PARK

COMMUNITY BRINGING BUSINESSES TOGETHER IN STYLE

£32 million Enterprise Zone, 4,500 jobs, and 100 start ups and multi nationals.

Established businesses in manufacturing, energy and charities. Serviced offices, 4 star hotel and more. M1. Extensive [wildlife](#) and water systems.

### CASTLEWOOD BUSINESS PARK

WHAT YOU NEED, EXACTLY WHERE YOU NEED IT

1.5 million square feet modern energy efficient design and build, at J28.

High calibre distribution and production space, diverse national, regional and local occupiers. Designed to the highest standards including on site retail.





## NOTTINGHAM BUSINESS PARK

### BEAUTIFULLY LANDSCAPED

Superior logistic warehouse, located for regional distribution at J26.

120 acres, designed to put your business in a dominant position. Units from 1,795 to 300,000 square feet. One of the Midlands premier business parks.



## BENNERLY VIADUCT AND VISITOR CENTRE

### THE IRON GIANT

Spanning the sky this megastructure connects the East Midlands east to west.

£16.5 million and 3.6 acres of land already invested will integrate this key landmark with a new visitor centre and connected sustainable travel routes.



## EASTWOOD HEALTH AND WELBEING HUB

### HEALTHY HEART OF EASTWOOD

Exploring options for a state of the art health facility and hydrotherapy pool.

To promote community well-being and healthy living. Mental health support, a community café, employment and skills assistance, and meeting rooms.



## KIMBERLY MEANS BUSINESS

### OUTSTANDING PLACE

New industrial units, sports facilities and town centre improvements.

A new Business and Community Hub for co-working, office and community.

20 industrial units, improved and new sports facilities and cycle networks.



## SPOTLIGHT ON M1 MOBILITY WEST



## SPOTLIGHT ON M1 MOBILITY WEST



### MINI HOLLAND

#### ACTIVE TRAVEL

**This feasibility study provides the opportunity to reimagine our streets.**

To improve the environment including new and improved facilities for walking, wheeling, people-focussed places and highway infrastructure.



### STAPLEFORD ENTERPRISE HUB

#### QUALITY EMPLOYMENT AND DESTINATION

**Flexible, creative space for start-ups, existing business and entrepreneurs.**

A 600 square metre vibrant indoor market space, independent bistro style food outlet, community garden terrace and new linked site carpark.



### PAVILION AND YOUNG PEOPLE'S CENTRE

#### CENTRE OF EXCELLENCE FOR SPORT

**State-of-the-art, accessible, energy-efficient, recreation and sports.**

A new building, community café, flexible events, learning and community spaces, 3G sports pitches, and enhanced parking and cycle storage.



### STAPLEFORD CYCLE TOWN

#### SUSTAINABLE SAFE ACTIVE TRAVEL

**Free cycle repair, servicing and route planning hub and training track open.**

Ilkeston Road Recreation Ground hosts a trained mechanic to refurbish and repair bikes. Further investments to create more connected cycle network.



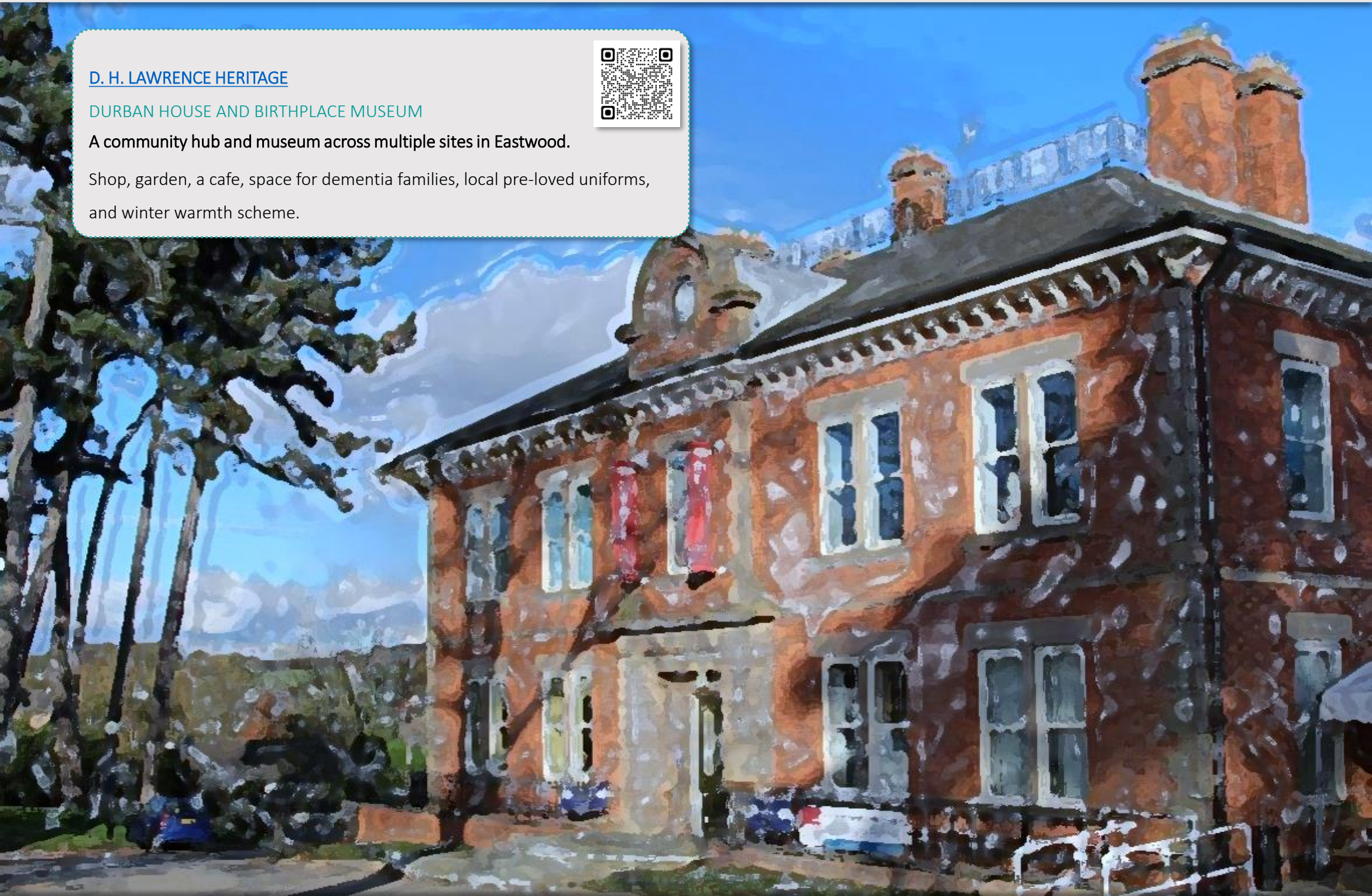


[D. H. LAWRENCE HERITAGE](#)

[DURBAN HOUSE AND BIRTHPLACE MUSEUM](#)

A community hub and museum across multiple sites in Eastwood.

Shop, garden, a cafe, space for dementia families, local pre-loved uniforms, and winter warmth scheme.





## SPOTLIGHT ON TRENT RIVERSIDE



### RATCLIFFE-ON-SOAR POWER STATION

TECHNOLOGY, ADVANCED MANUFACTURING AND ENERGY



To transform the UK's last coal-fired power station to regional net zero.

Planning anticipates low-carbon energy production, storage and distribution, manufacturing businesses and gigafactories for battery and electric vehicles.

### CHETWYND BARRACKS

THE MODEL FOR LIVING AND WORKING



To regenerate a historic site and reimagine local communities in two counties.

New mainline station, regional transport, cycle routes, green spaces, schools, healthcare, jobs and carbon neutral homes. Two cities in 12-minutes.

### TOTON INNOVATION HUB

CREATE, INVENT, CHANGE, INVEST



A living, breathing testbed for new energy generation, storage and community.

Self-sustaining system. Over 18,500sqm of employment space, academy and incubator spaces, testing and implementing sustainable future build designs.

### ATTENBOROUGH GREAT PARK

A PARK LIKE NO OTHER



Opportunities along the River Trent, including the Rivers Erewash and Soar.

An innovators' canvas, inspired by natural capital, a landmark legacy project.

A 'start with the park' principle, to lever the wider River Trent catchment.



## [FAIRHAM LIFE](#)

### FLAGSHIP NEW NEIGHBOURHOOD

Near junction 24 M1, East Midlands Airport and Tram Park and Ride.

One million square feet purpose-built commercial space, 3,000 homes and minutes from Nottingham City. Employment units to buy or let.



## [RUDDINGTON FIELDS BUSINESS PARK](#)

### GRADE A BUSINESS

A well established place to do business.

Well accessible to the A52 and J24 M1, surrounded by Rushcliffe Country Park, with shops, cafes, bars and restaurants only a short walk away.



## [NOTTINGHAM ENTERPRISE ZONE](#)

### THE UK'S BIGGEST HEALTH SCIENCE INCUBATOR

For life sciences, medical research, health, beauty and wellness innovations.

286 acres across four sites, with incentives to encourage the creation of new business. Existing buildings and brownfield land plus up to 675 homes.



## [CLIFTON LONG TERM PLAN](#)

### COMING SOON

Up to £20 million of funding through the Long-Term Plan for Towns.

Clifton Town Board will prepare a long-term plan for the area to be submitted for Government approval from summer 2024.



## SPOTLIGHT ON TRENT RIVERSIDE



## SPOTLIGHT ON TRENT RIVERSIDE



### COUNTY HALL

#### ICONIC LANDMARK

Riverside location, close to amenities and world-famous sports venues.

An iconic Nottinghamshire landmark, we plan to give this landmark building and site a new lease of life, with its heritage respected.



### NOTTINGHAM SOUTHERN GATEWAY

#### WORK, LEARN, PLAY AND LIVE

Ambitious £2 billion regeneration of Nottingham City south side.

Over £62 million already invested in the Central Library, Bus Station, Car Park, public spaces, infrastructure, Nottingham College City Hub and Castle.



### ISLAND QUARTER

#### OF NOTTINGHAM, FOR NOTTINGHAM

Landmark development opening up 36-acres of Nottingham City.

Phase 1B, A 228-room hotel, 247 apartments, 2,800square metres of serviced offices, and a central Forum designed for people.



### BROADMARSH

#### A GREEN HEART

To transform the Broadmarsh Shopping Centre for nature and people.

A new greener future for our City, the Broadmarsh will be transformed into a new natural greenspace, taking a nature first approach to urban planning.





## TEAL PARK

### TEAL CLOSE MINI CITY

The £96 million Teal Close project includes business units and more.

830 homes, a new Rivendell primary school, hotel, care home, open space, leisure offer, allotments, an ecology park, and a new community building



## NETHERFIELD LAGOONS

### NATURE FIRST

Local Nature Reserve in Nottinghamshire.

Current projects include Floating Plant Islands for a balanced ecology and for animals habitat, fish and insects, a valuable resource for rare waterfowl.



## CARLTON LONG TERM PLAN

### COMING SOON

Up to £20 million of funding through the Long-Term Plan for Towns.

Carlton Town Board will prepare a long-term plan for the area to be submitted for Government approval from summer 2024.



## RICHARD HERROD LEISURE CENTRE

### MOVING COMMUNITIES

Sport, recreation and physical activity to improve health and wellbeing.

Multi-functional community hub. Live entertainment, regular events, indoor bowls and much more. Exploring options for a wider range of facilities.



## SPOTLIGHT ON TRENT RIVERSIDE



## SPOTLIGHT ON TRENT RIVERSIDE



### HOLME PIERREPONT COUNTRY PARK

#### SPORT AS A SPECTACLE

Set in 270 acres of beautiful parkland, just 10 minutes from Nottingham City. A new masterplan is being developed for this key riverside location which incorporates the National Water Sports Centre.



### TOLLERTON NORTH

#### SUSTAINABLE HEALTHY LIVING

With integrated, well-connected facilities near City and trans-midlands routes. Up to 4,000 homes, 20ha of employment, enhanced transport, easy access to the National Water Sports Centre, hospitals, universities and wider jobs.



### WHEATCROFT BUSINESS PARK

#### BUSINESS GROWTH

Countryside locations close to the A453 and A52 trans-midlands routes. Phase 1 completed 1,500 new homes. 4ha of employment land for redevelopment or expansion.



### BUSINESS ACCELERATOR PARKS

#### COUNTRYSIDE LIVING AND WORKING

Low risk business park sites with easy access to the A52 and A453. 59 industrial and Warehouse Units plus 18 retail and office location ranging in size from 750 sq. ft to 3,750 sq. ft. We help new businesses, flexible lease.





FRAMEWORK KNITTERS MUSEUM

A 400 YEAR HERITAGE

A nationally significant piece of our history

Energy efficiency measures, student placements, artist residencies and project partnerships. Established 1829, the Parker family ran this site for 100 years.







## WE ARE INVESTING IN LEISURE, ART AND MEDIA INDUSTRIES

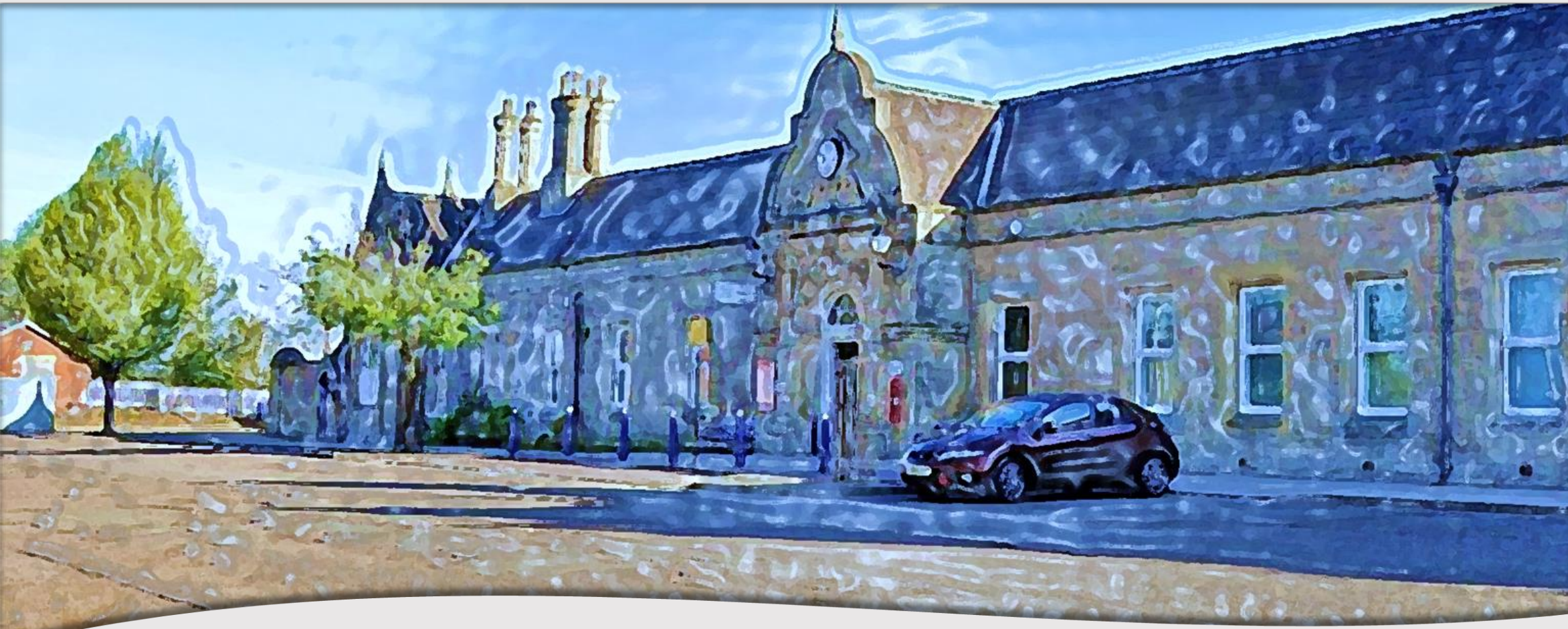
OUR VISITOR ECONOMY ALONE IS WORTH AN  
UNPRECEDENTED £2.05 BILLION.

Plus 32.97 million visitors per year and growing.

We are part of strategic and high-performing Local Visitor Economy Partnership with specialist support and investment from Visit England and Visit Britain.

**Food and Drink Production:** Nottinghamshire produces a variety of local food and beverages. From Bramley apples and Stilton cheese to craft beers and artisanal spirits, the county celebrates its culinary heritage.





## WE ARE INVESTING IN RESILIENT AND SUSTAINABLE PLACES

OVER £421M INTO LOCAL ASSETS FOR THRIVING PEOPLE, BUSINESS AND PLACES TO BE PROUD OF.

**Plus £505 million for natural solutions and energy.**

Our partnerships fund sustainable development, social value, and climate positive outcomes.

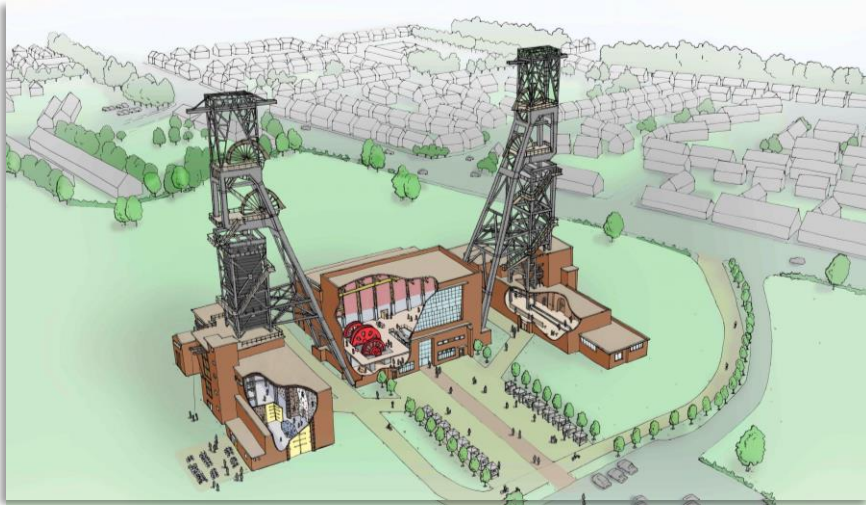
### **Renewable Energy and Environmental Technologies:**

Nottinghamshire actively promotes green growth and sustainability. Initiatives include solar energy projects, electric vehicle infrastructure, and eco-friendly construction.





## SPOTLIGHT ON SHERWOOD AND DUKERIES



### CLIPSTONE HOLDINGS

#### HEALTHY BUSINESS AND COMMUNITY

30 modern sustainable units in a leisure setting with sustainable transport.

3G, grass, stadium and cricket pitches, multi-use courts, two pavilions, sports hall, 505 parking spaces, jobs, skills, health and a catalyst for development.

### CLIPSTONE HEADSTOCKS

#### MINING HERITAGE AND MODERN EVENTS

Retention of the tallest headstocks in the UK. Up to 60 jobs and to tell history.

Winding house and pit head buildings to provide active indoor sports, a cafe and multi functional space. Site currently used as museum and music venue.

### WELBECK PROJECTS

#### BUILD A STRONG, CREATIVE AND SUSTAINABLE COMMUNITY

A working estate in a historic park, with technologies for sustainable energy.

Ancient woodlands, forestry, lakes, farmland and some of the country's most important rural heritage buildings. [Sustainable project](#) for jobs and place.

### WARSOP HEALTH HUB

#### STATE OF THE ART HEALTH AND FITNESS

£9.2m new health and fitness centre supported by Sport England.

A swimming pool, mixed use games area, fitness suite, multi-purpose sports hall, studio, café and IT area and community space.





## AMBITION ARNOLD

### A BONNINGTON TOWN

Over £50 million investment: a new market, leisure centre, theatre and more.

The strong masterplan includes a new library, public realm and improved access to the high street. £4m already invested into Market Place units.



## BESTWOOD COUNTRY PARK

### 650 ACRES OF HISTORY

Heritage parkland investable to increase biodiversity and visitor economy.

The Winding Engine House is the last remaining part of a vanished colliery, a relic of Victorian industrial engineering. Restoration of nature and [water](#).



## GREENWAY ROUTES

### ACTIVE NATURE TRAILS

To convert ex-rail lines for Bilsthorpe, Cotgrave, Calverton and Clipstone.

Biodiversity net gain, local high streets and safe crossing routes and link up coal mining heritage, leisure attractions and forest and woodland sites.



## FUTURE HOMES AS STANDARD

### COMING SOON

Offering top quality environments for home life and flexible working.

Exploring options to enable [more of the UK's first future standard homes](#).

Air source heat pumps, solar PV, insulation and EV charging points.



## SPOTLIGHT ON SHERWOOD AND DUKERIES





## SPOTLIGHT ON SHERWOOD AND DUKERIES



### NEW OLLERTON PLACE

#### UNDER ONE ROOF

**High-quality mixed-used development for jobs, training and public services.**

New library, sports and community facilities, retail, food retail and offices. A green corridor and homes in a single, modern and accessible town hub.



### FOREST CORNER

#### A MASTERPLAN FOR GROWTH

**Plans will enhance the visitor experience, natural habitat and connectivity.**

Local authorities and partners collaborating on development options for visitor economy, local jobs, and new skills in environmental sectors.



### EDWINSTOWE HOUSE

#### ROBIN HOODS VILLAGE

**Converted Edwardian home within the stunning backdrop of Sherwood Forest.**

55,000 square feet and access to all major routes. Over 40 businesses based here. Conference, restaurant, reception series, Garden Room, and parking.



### SHERWOOD LANDSCAPE PARTNERSHIP

#### CONNECTING AND CONSERVING OUR HERITAGE BUILDINGS

**Work underway to survey Sherwood's historic buildings and routes.**

From pubs and pinfolds to cottages and coaching houses. Months of surveys identify historic buildings and active travel routes to add to investment.





## SHERWOOD ENERGY VILLAGE

### COMMUNITY AT THE HEART

**Award winning environmental development with brand new units to let.**  
Business, housing, leisure and recreation built to manage flooding and energy. Designed for flexibility with excellent parking and well landscaped.



## BILSTHORPE BUSINESS PARK

### INNOVATIVE AGRICULTURE

**Phase 1 development units generates current rental income of £131,748.**  
Former Colliery. 58.2 acres industrial, storage and warehouse, 12 acres employment land and 254.9 acres agricultural. Planning for a wind farm.



## HEXGREAVE HALL

### POSITIVE ENVIRONMENTAL PRACTICE

**Unique setting in a 1,000-acre estate overlooking a beautiful deer park.**  
Modern offices in a traditional estate. On the main A617, plus access to A1, M1, Newark and Mansfield. Many more and other counties in easy distance.



## BROUGHTON BUSINESS CENTRE

### GREEN INDUSTRIES

**Light and modern, workspace picturesque location, near Sherwood Forest.**  
Set between Mansfield, Worksop and Lincoln, accelerated growth for creative industries, precision engineering, biosciences and green technology.



## SPOTLIGHT ON SHERWOOD AND DUKERIES





[RUFFORD ABBEY AND SAWMILL](#)

FOUNDED IN THE 12<sup>TH</sup> CENTURY

Exquisite Wedding Venue and Events Space in the heart of Nottinghamshire.

Stunning views across the lake, natural surroundings and a relaxed rural atmosphere, providing an enchanting backdrop.





[DIGITAL CONNECTIVITY AND INNOVATION](#)

[ACCESS TO CUTTING EDGE TECHNOLOGY](#)

Detailed Mapping of all 4 Main Mobile Networks over 14000Km of roads.

Enables investors to strategically choose locations that guarantee the best connectivity, optimising business operations and customer engagement.





## SPOTLIGHT ON NORTH NOTTS GATEWAYS



### STEP FUSION CAMPUS

#### CLEAN ENERGY FOR THE FUTURE

To test ground-breaking Spherical Tokamak for Energy Production.

Globally significant to generate highly skilled labour and innovative supply chains in the energy and low carbon sectors. Accelerated growth in homes.



### HARWORTH AND BIRCOTES TOWN

#### COMMUNITY, ENTERPRISE AND HEALTH

Connected town sites regenerated for future living including energy efficiency.

At multiple sites: Leisure, health and wellbeing centres, community and skills hub, retail and enterprise, cycle and footpaths, restaurants and cafes.



### NORTH BOARDER

#### COMMUNITY, HERITAGE AND HOMES

0.86 ha heritage opportunity site, funded enabling works.

Design code available, over 55's Affordable Housing scheme. 28 high quality dwellings, parking, biodiversity landscaping and linked community centre.



### HARWORTH AND BIRCOTES COLLIERY

#### SUSTAINABLE NEW COMMUNITY

To protect and enhance environmental assets for all generations.

To redevelop the old Colliery Site delivering a mixed-use development with new community facilities, open spaces and public transport.





## THE BRIDGE SKILLS HUB

### INNOVATION DISTRICT LANDMARK

**Business incubation and product design and growth industries.**

Public sector and business collaborations for skills, bike-sharing, bankable investments, health, care, medical, digital and low carbon innovation.



## CREATIVE VILLAGE

### HEALTHY COMMUNITIES AND BUSINESS

**36 high quality homes in close proximity the town centre and canal.**

Overlooking a green flag park and by a £14m workshop-based training centre, a former printworks repurposed for start-up creative industries.



## WORKSOP YARDS

### CONNECTED TO HERITAGE

**To connect the rich history of Worksop to the retail, river and nature assets.**

A strong retail core and distinctive quarter. Active travel, arts, exhibits, social enterprise, historic buildings, incubator space and free Wi-fi everywhere.



## TURBINE INNOVATION CENTRE

### 5G DIGITAL BUSINESS

**Collaboration for the best emerging innovations in the County.**

Develop and commercialise innovative products and services. Innovators access the latest in 5G networking and augmented and virtual reality.



## SPOTLIGHT ON NORTH NOTTS GATEWAYS





## SPOTLIGHT ON NORTH NOTTS GATEWAYS



The extension of Newgate Surgery provides the opportunity to re-vision the Market Place as a wider health and wellbeing hub.

## THE BLUE GREEN RIBBON

### RIVER RYTON REGENERATION

For buildings and places that celebrate the riverside, wider valley and water. Public realm, art, library, jobs, nature, moorings and active travel. Vibrant destinations: cafés, bars and restaurants. Linking Canch Park to Sandhill Lake.



## WORKSOP ENERGY

### AFFORDABLE WARMTH

To create an energy centre that will provide low carbon heat and electricity. Serving the Innovation District and wider area, new homes and businesses with future specialist skills linked to wider future employment sites.



## TIMELESS HOMES

### ENERGY EFFICIENT, INTEGRATED, GREEN HOMES

Creating homes people want to live in, with riverside and canal views. Multiple sites in an historic environment. Strong routes into the Town Centre for retail, leisure and core services. Transport, health and wellbeing benefits.



## WORKSOP FAMILY

### COMING SOON

Options for family hub, health support, homes and community farm shop. Each family hub is tailored to local community though a mix of physical and virtual spaces, as well as advice and support for physical and mental health.





## PRIORY GATEHOUSE

### A 700 YEAR HISTORY

**Providing a lasting legacy for the local community.**

Workop Priory and Gatehouse Trust and Sheffield University MA Architecture Live Projects team. A long-term landmark restoration.



## PRIORY LEISURE AND HEALTH

### WORKSOP TOWN REGENERATION

**New entertainment, leisure, retail and food anchors a wider masterplan.**

A bowling alley, climbing wall, indoor adventure play area, café, health and wellbeing centre and significant match investment to kickstart development.



## WORKSOP LONG TERM PLAN

### COMING SOON

**Up to £20 million of funding through the Long-Term Plan for Towns.**

Workop Town Board will prepare a long-term plan for the area to be submitted for Government approval from summer 2024.



## RETFORD TOWN HALL

### COMING SOON

**£1m towards redevelopment of this historic asset.**

To include a new community space, and banking hub.



## SPOTLIGHT ON NORTH NOTTS GATEWAYS





## SPOTLIGHT ON NORTH NOTTS GATEWAYS



### RETFORD REGENERATION

#### MAYFLOWER PILGRIMS TOWN

**Regeneration scheme to showcase King's Park, Town Hall venue.**

Public realm and town centre living, new business growth units, leisure options and space to support and grow businesses and skills.



### RETFORD STATION GATEWAY

#### RETFORD ON TRACK

**Regeneration scheme to boost train travel and the Chesterfield Canal.**

Improved footpaths, non-vehicular routes and gateways around the station. Connects town centre and local homes and strong inter-urban rail routes.



### ROSSINGTON HOUSE

#### CENTRAL WORKSPACE HUB

**A substantial two storey office to let close to Retford Station Gateway.**

High quality fully self contained offices, around 250 to 500 square feet. Larger available by combining adjacent suites. Prominent suite e.g. for a café.



### BULCOTE BUSINESS PARK

#### PREMIER INDUSTRY

**Brand new high spec development with units from 604 to 1,385 square feet.**

High tech industrial units and grade A office space. A newly developed estate for green business in Retford's foremost business location.





## RETFORD TOWN HALL

### CENTURIES OF CIVIC FUNCTIONS

Grade 2 listed use for events, markets, business community & finance

A magnificent staircase and a beautiful chandelier, the ballroom and market hall host a range of events (theatre style, conference, and social).





# HOME TO ICONIC, DIVERSE AND CONNECTED PEOPLE

PLACE OF HEROS AND LEGENDS SINCE THE 12<sup>th</sup> CENTURY

King's Houses convened at a Clipstone medieval royal home.

Earliest mention of Robin Hood, creating a legend against tyranny.

One of the leading intellectuals of 18<sup>th</sup> century England.

"Childe Harold's Pilgrimage" A hero at odds with societal norms.

Brought international cultures together through fine art.

Established the Nottingham Suffragettes for women's rights

Founded The Salvation Army, to meet spiritual and material needs of the poor.

● 1157- 1199

King Richard 1<sup>st</sup>

Met William King of Scots. Later Kings met at Parliament Oak in Sherwood Forest.



● 1330 - 1400

William Langland

His allegorical poem tells of moral values from life, truth, love and work.



● 1731 - 1802

Erasmus Darwin

Charles Darwin's grandfather: a poet, physician, botanist, philosopher and naturalist.



● 1788 - 1824

Lord Byron

His writing reflected the weariness of a generation after the Revolutionary and Napoleonic wars.



● 1802-1828

Richard Parkes Bonington

Landscape painter from Arnold who brought English style to France.



● 1881 – 1972

Helen Watts

Imprisoned twice for activism in 1909 and later awarded the Hunger Strike Medal "for Valour".



● 1829 – 1912

William Booth

A pawnbroker's shop apprentice from age 13 he began the Mission with his wife, Catherine Booth.





# WE ARE CHANGE MAKERS

PEOPLE MAKE OUR PLACE

Community minded shopkeeper wired his village with first time electricity.

"Lady Chatterley's Lover" shifted views on censorship and the arts.

Appointed Britain's first black Magistrate in 1962

Achieved the Hawthorden Prize for outstanding imaginative literature

The first woman director of MI5 pursued a policy of openness and transparency

Double Olympic Gold Medallist and World Record Breaking Swimmer

Led team GB to a series of 10 record breaking Paralympic games medal hauls.

● 1911-1949

**Fred White**

An avid photographer who archived many family and community happenings.



● 1911-1960

**D.H. Lawrence**

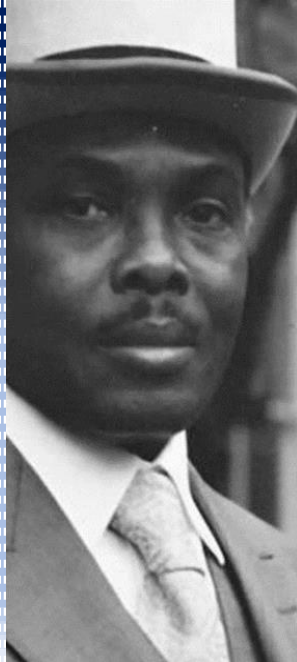
Author inspired by his working class life in Eastwood and Nottinghamshire Landscapes



● 1921-2007

**Eric Irons, OBE**

Born in Jamaica, an RAF pilot moved to Nottingham and campaigned for equal rights.



● 1928-2010

**Alan Stiltoe**

Author of "The loneliness of a long distance Runner".



● 1935-2004

**Stella Rimington**

Dame Commander of the Bath. Over 30 years she worked all the main service responsibilities.



● 1985 - Today

**Rebecca Adlington**

Ambassador for Encephalitis Society and a Patron of Women in Sport.



● 1966 - Today

**Penny Briscoe, OBE**

Director of the British Paralympic Association since 2002.





WE ARE NOTTINGHAMSHIRE EAST MIDLANDS PARTNER



SPOTLIGHT ON PARTNERSHIPS



WE ARE NOTTINGHAMSHIRE EAST MIDLANDS PARTNER



SPOTLIGHT ON PARTNERSHIPS



## EAST MIDLANDS INVESTMENT ZONE





## WE ARE INVESTING IN REGIONAL PARTNERSHIPS

# £1.14 BILLION OVER 30 YEARS

TRANSPORT, HOUSING, SKILLS, ADULT EDUCATION, ECONOMIC DEVELOPMENT AND NET ZERO.





A scenic landscape photograph of a green field with trees and hills under a cloudy sky. The foreground is filled with tall, golden-brown grass. In the middle ground, there is a large green field with a line of trees. In the background, there are rolling hills and a small town. The sky is blue with white and grey clouds.

# WE ARE NOTTINGHAMSHIRE

Connect with us at: [businessteam@nottscc.gov.uk](mailto:businessteam@nottscc.gov.uk)

Find out more @ [Nottinghamshire Observatory](#)