

Support for Special Educational Needs



This easy read document tells you about our SEND Local Offer for children with additional needs in education.



Special Educational Needs are learning difficulties or disabilities that make it harder for children to learn than most children of the same age.

What is support for special educational needs?



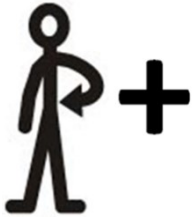
This support is for children and young people with additional needs, not just with an Education, Health, and Care (EHC) Plan.



Children with special educational needs are likely to need extra help or different help from that given to other children their age.



If you have a special need or disability your school or college should provide support for your learning.

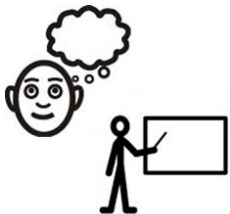


The support should meet your needs and have positive outcomes.

How do I get this support?



Children learn at different speeds and in different ways.



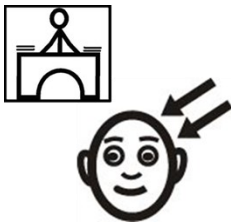
Teachers should think about what will work best for the children they teach.



If the school says your child has special educational needs and they think they need more help and support, they must talk to you about this.



If you are worried about how your child is getting on at school, start talking to their class teacher or form tutor. You can also ask to speak to **the Special Educational Needs Co-ordinator (SENCO)**.



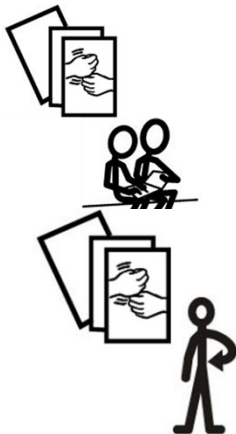
A SENCO is the teacher responsible for special educational needs in school.



It is a good idea to write down the things you talk about and write down all the times you contact school.



You might need help to do this so talk to the people that support you. This could be family, friends, or paid support.



The school's SENCO will work with parents and class teachers to plan what to do.

This plan is called an **Individual Education Plan (IEP)**.



The plan shows the extra support your child needs.

The support works in 4 steps:



1. Assess

This assessment is to find out what the child or young person's needs are.



The young person, child and their parents or carers should be involved in the assessment.



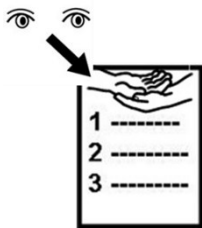
2. Plan

This is how the school will support the child or young person.



3. Do

The child or young person will get support to meet their needs.



4. Review

Checking to see if the support has worked and thinking about what to do next.

Where can I find out more?



You can find more information on our [website](#).



Click on the pink Education tile and then **Special Educational Needs Support**.

Where can I get support?



You can contact our [Customer Services Team](#).



People who support and help you.



The [Ask Us](#) service offers free and confidential advice and support for parents and carers of children and young people with special educational needs and disabilities.



You can contact them by phoning:
0800 121 7772



Or email:
enquiries@askusnotts.org.uk

Customer Service Centre



Our Customer Service Centre can answer most of your questions and help with information and form filling.

There are several ways to contact them, including:



Web: [Use our online contact form](#)



Telephone: 0300 500 80 80



Relay UK

Text Relay: 18001 0115 977 4050

People who have hearing or speech difficulties and prefer to communicate via text can use the Text Relay service through the [Relay UK app](#).



Sign Video

People who use British Sign Language to communicate can use the [SignVideo app](#) to speak with us.

Links in this document

Nottinghamshire SEND Local Offer

nottinghamshire.sendlocaloffer.org.uk

AskUs Nottinghamshire

askusnotts.org.uk

Nottinghamshire County Council – contact us form

nottinghamshire.gov.uk/contactform

Relay UK app

www.relayuk.bt.com/how-to-use-relay-uk/download-app.html

SignVideo app

signvideo.co.uk/download

For plain English web page version of this information, go to:

[Nottshelpyourself | Nottinghamshire's SEND Local Offer](https://nottshelpyourself.org.uk/Nottinghamshire%20SEND%20Local%20Offer)

www.nottinghamshire.sendlocaloffer.org.uk

This easy read was first published October 2022

This information was last updated 29/04/2025