

**AUTUMN/WINTER
2023/24**

WEEK 1

WEEK COMMENCING

**February 12, March 4,
March 25**



MONDAY



Margherita pizza
pommes noisette
vegetable sticks

Gluten Milk Soya

OR



Jacket potato with cheese
baked beans or tuna
mayonaise & mixed salad

Milk Egg Fish

OR
Sandwich with assorted
filling: cheese Milk Soya Gluten,
tuna mayo Gluten Soya Fish Egg
mixed salad

DESSERT



Mixed berry mousse
& apple wedge

Milk

OR Fruit

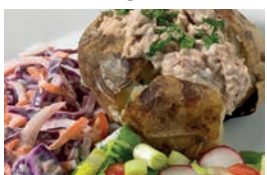
TUESDAY



Spaghetti Bolognese
garlic bread
crunchy vegetables

Gluten Mustard Milk Soya Fish

OR



Jacket potato with cheese
baked beans or tuna
mayonaise & mixed salad

Milk Egg Fish

OR
Sandwich with assorted
filling: cheese Milk Soya Gluten,
tuna mayo Gluten Soya Fish Egg
mixed salad

DESSERT



Cornflake tart
& custard

Milk Gluten Sulphur Dioxide

OR Fruit

WEDNESDAY



Southern style burger
in a bun
jacket wedges
carrot sticks & ranch salad

Gluten Egg Milk Sesame

OR



Jacket potato with cheese
baked beans or tuna
mayonaise & mixed salad

Milk Egg Fish

OR
Sandwich with assorted
filling: cheese Milk Soya Gluten,
tuna mayo Gluten Soya Fish Egg
mixed salad

DESSERT



Fruit flapjack

Gluten

OR Fruit

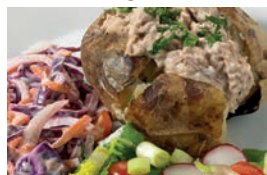
THURSDAY



Roast turkey & stuffing
gravy
roast OR mashed potatoes
cabbage & carrots

Gluten

OR



Jacket potato with cheese
baked beans or tuna
mayonaise & mixed salad

Milk Egg Fish

OR
Sandwich with assorted
filling: cheese Milk Soya Gluten,
tuna mayo Gluten Soya Fish Egg
mixed salad

DESSERT



Cheese & crackers

Gluten Milk

OR Fruit

FRIDAY



MSC fish fingers diced
potatoes
garden peas & crunchy
veg, tomato ketchup

Gluten Fish

OR



Jacket potato with cheese
baked beans or tuna
mayonaise & mixed salad

Milk Egg Fish

OR
Sandwich with assorted
filling: cheese Milk Soya Gluten,
tuna mayo Gluten Soya Fish Egg
mixed salad

DESSERT



Apple muffin

Milk Gluten Egg

OR Fruit

AVAILABLE DAILY: Best of both bread Gluten and Soya Seasonal vegetables available daily, Coleslaw Egg when served. Vegetarian meals available upon request

www.nottinghamshire.gov.uk/schoolmeals



**Nottinghamshire
County Council**

**AUTUMN/WINTER
2023/24**

WEEK 2

WEEK COMMENCING

**January 29, February 19,
March 11, April 1**



MONDAY



Quorn dippers
roast baby potatoes
sweetcorn
cucumber sticks
Gluten

OR



Jacket potato with cheese
baked beans or tuna
mayonnaise & mixed salad
Milk Egg Fish

OR
Sandwich with assorted
filling: cheese Milk Soya Gluten,
tuna mayo Gluten Soya Fish Egg
mixed salad

DESSERT



Chocolate mousse & apple
wedges
Milk

OR Fruit

TUESDAY



Nottinghamshire sausage
gravy, Yorkshire pudding
mashed potato
broccoli & carrots
Egg Gluten Milk Sulphur Dioxide

OR



Jacket potato with cheese
baked beans or tuna
mayonnaise & mixed salad
Milk Egg Fish

OR
Sandwich with assorted
filling: cheese Milk Soya Gluten,
tuna mayo Gluten Soya Fish Egg
mixed salad

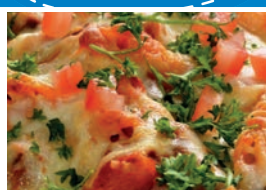
DESSERT



Jelly & fruit

OR Fruit

WEDNESDAY



Cheesy tomato pasta
garlic bread
carrot & cucumber sticks
Gluten Mustard Milk Soya

OR



Jacket potato with cheese
baked beans or tuna
mayonnaise & mixed salad
Milk Egg Fish

OR
Sandwich with assorted
filling: cheese Milk Soya Gluten,
tuna mayo Gluten Soya Fish Egg
mixed salad

DESSERT



Marble slice
& custard
Gluten Milk

OR Fruit

THURSDAY



Roast pork, stuffing & gravy
Yorkshire pudding
roast OR mashed potato
cabbage & fresh carrots
Milk Egg Gluten

OR



Jacket potato with cheese
baked beans or tuna
mayonnaise & mixed salad
Milk Egg Fish

OR
Sandwich with assorted
filling: cheese Milk Soya Gluten,
tuna mayo Gluten Soya Fish Egg
mixed salad

DESSERT



Honey & oatmeal cookie
Gluten

OR Fruit

FRIDAY



MSC fish finger wrap
Pommes noisette
crunchy veg & sweetcorn
tomato ketchup
Gluten Milk Fish

OR



Jacket potato with cheese
baked beans or tuna
mayonnaise & mixed salad
Milk Egg Fish

OR
Sandwich with assorted
filling: cheese Milk Soya Gluten,
tuna mayo Gluten Soya Fish Egg
mixed salad

DESSERT



Strawberry ice-cream tub

Milk

OR Fruit

AVAILABLE DAILY: Best of both bread Gluten and Soya Seasonal vegetables available daily Coleslaw Egg when served. Vegetarian meals available upon request

www.nottinghamshire.gov.uk/schoolmeals



**Nottinghamshire
County Council**

**AUTUMN/WINTER
2023/24**

WEEK 3

WEEK COMMENCING

**February 5, February 26,
March 18, April 8**



MONDAY



Pasta Neopolitan
garlic bread
sweetcorn cobette
Gluten Mustard Soya Milk

OR



Jacket potato with cheese
baked beans or tuna
mayonnaise & mixed salad
Milk Egg Fish

OR

Sandwich with assorted
filling: cheese Milk Soya Gluten,
tuna mayo Gluten Soya Fish Egg
mixed salad

DESSERT



Chocolate brownie
Gluten

OR Fruit

TUESDAY



Meatballs in tomato sauce
with pitta bread
Tilda rice
Crunchy vegetables
Gluten Egg Milk Soya

OR



Jacket potato with cheese
baked beans or tuna
mayonnaise & mixed salad
Milk Egg Fish

OR

Sandwich with assorted
filling: cheese Milk Soya Gluten,
tuna mayo Gluten Soya Fish Egg
mixed salad

DESSERT



Fruit yoghurt
Milk

OR Fruit

WEDNESDAY



Cheese & tomato pizza
jacket wedges & mixed
salad
Milk Gluten Soya

OR



Jacket potatoes with
cheese, baked beans or
tuna mayonnaise & mixed
salad
Milk Egg Fish

OR

Sandwich with assorted
filling: cheese Milk Soya Gluten,
tuna mayo Gluten Soya Fish Egg
mixed salad

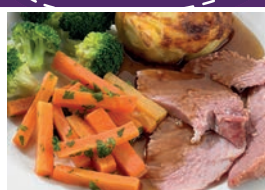
DESSERT



Honey cake & custard
Milk Egg Gluten

OR Fruit

THURSDAY



Roast Gammon & gravy
Yorkshire pudding
roast OR mashed potatoes
carrots & broccoli
Milk Egg Gluten

OR



Jacket potato with cheese
baked beans or tuna
mayonnaise & mixed salad
Milk Egg Fish

OR

Sandwich with assorted
filling: cheese Milk Soya Gluten,
tuna mayo Gluten Soya Fish Egg
mixed salad

DESSERT



Fruit cookie
Gluten

OR Fruit

FRIDAY



MSC breaded fish portion
oven chips
garden peas & sweetcorn
tomato ketchup
Gluten Fish

OR



Jacket potato with cheese
baked beans or tuna
mayonnaise & mixed
salad
Milk Egg Fish

OR

Sandwich with assorted
filling: cheese Milk Soya Gluten,
tuna mayo Gluten Soya Fish Egg
mixed salad

DESSERT



Butterscotch tart
Milk Gluten

OR Fruit

AVAILABLE DAILY: Best of both bread Gluten and Soya Seasonal vegetables available daily Coleslaw Egg when served. Vegetarian meals available upon request

www.nottinghamshire.gov.uk/schoolmeals



**Nottinghamshire
County Council**