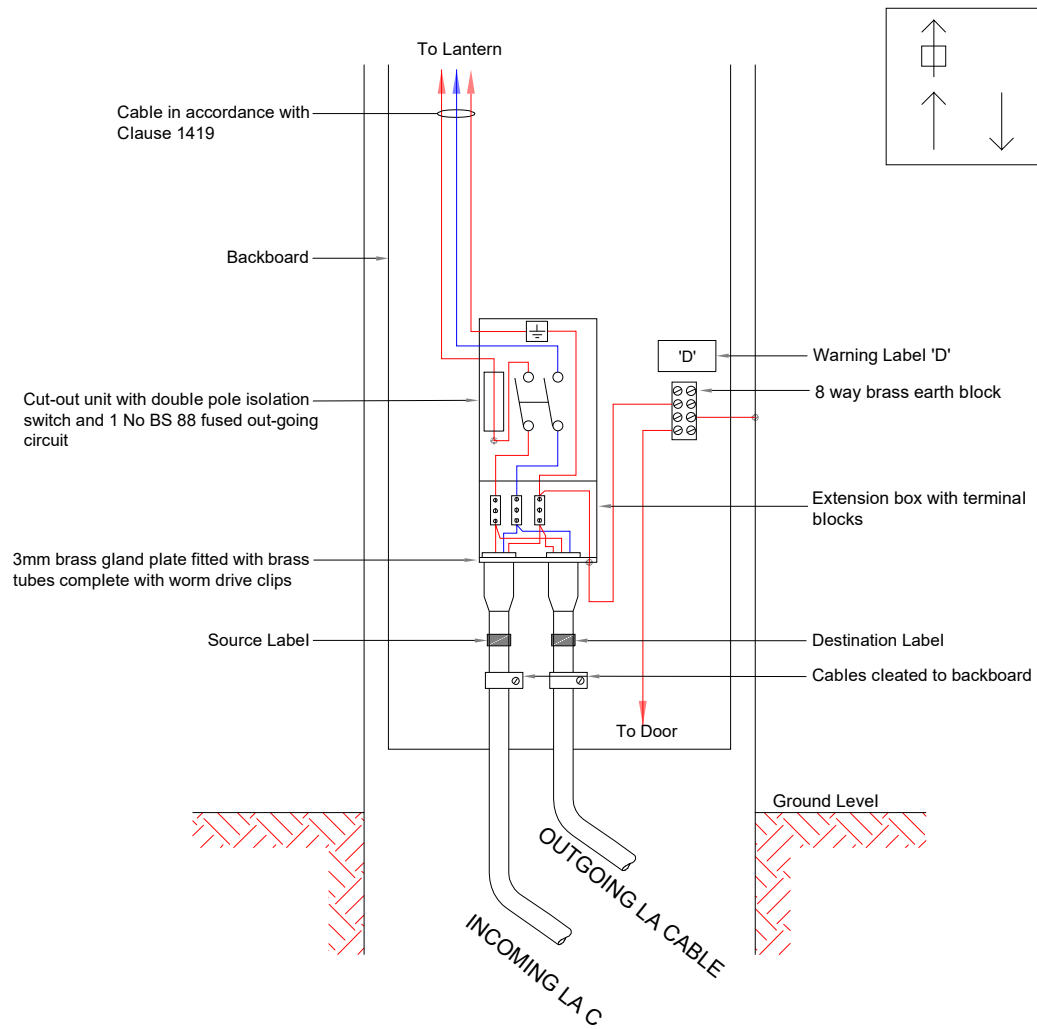


FOR CABLE SIZES UP TO 10 0mm²



NOTES:

1. All dimensions are in millimetres unless otherwise stated.
2. All terminations shall comply fully with the Model Contract Document for Highway Works (MCDHW) Specification.
3. All BS 88 fuses shall be rated in accordance with the equipment manufacturer's requirements.
4. For 'warning' label details see Drg No SD/14/10.
5. For source/destination label details see Drg No SD/14/9.
6. All equipment shall be fixed to the backboard using stainless steel screws.

Rev.	Description	Drawn	Ch'kd	Auth	Date



in partnership with
Nottinghamshire County Council
 www.viaem.co.uk Tel 0115 804 2100
 Bilsthorpe Depot, Bilsthorpe Business Park, Bilsthorpe,
 Nottinghamshire, NG22 8ST

Project		Highway Construction Details			Project	Drawn	Date
Status	Project No.	Street Lighting			JLS	14/08/2020	
Drawing Title		Cable Termination Type 2			JD	05/02/2021	
Drawing No.		SD/14/13			JP	JLS	
					Rev.	0	Scale
						N.T.S @A4	

Apr 16, 2021 - 2:07pm: I:\Highways\Design and Construction\Roads and Highways\Projects\B-1920000\20871 New Hwy Design\Guides for New Dev\Design\CAD\New standard details\NCC SD\140\ Series SD_14_13.dwg