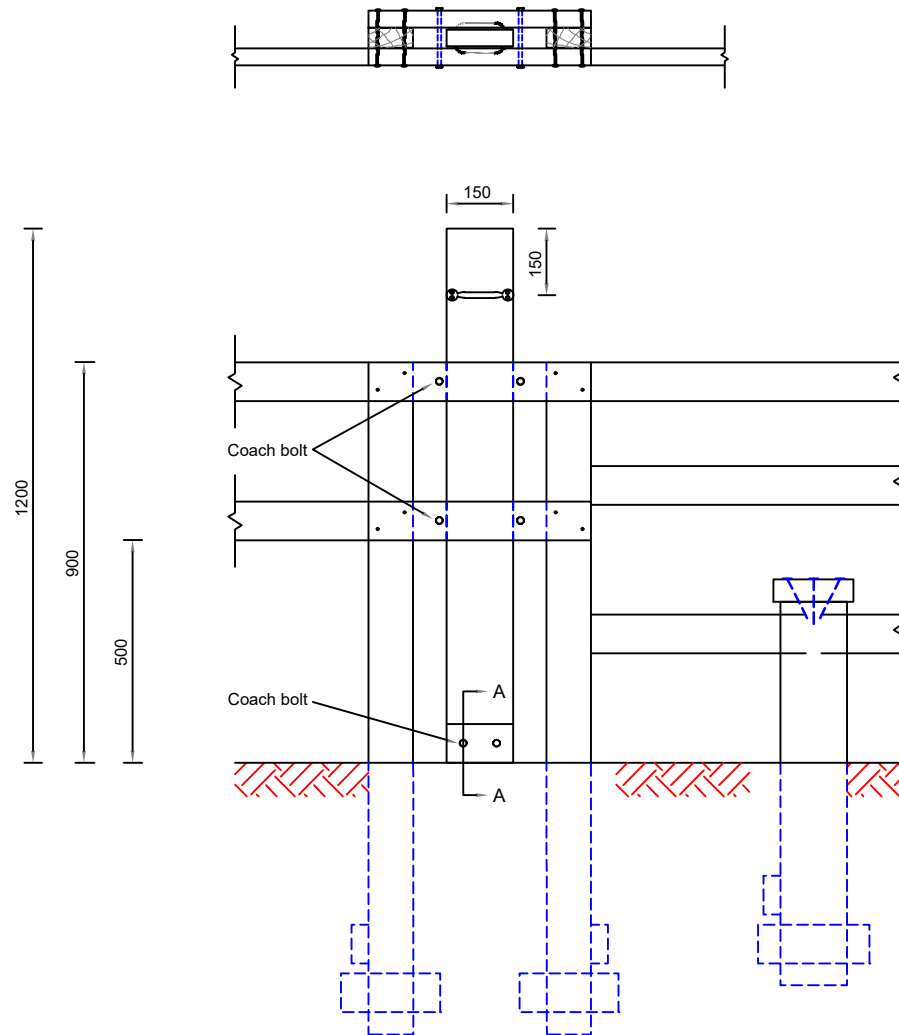
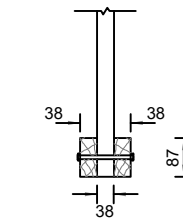


NOTES:

1. All dimensions are in millimetres unless otherwise stated.
2. Attach 2 x 250 long off-cut rail pieces to the bottom of the post using four 100mm nails, to anchor it. Post to be secured with rubble and soil compacted, unless otherwise specified.
3. Length of post varies according to fence type.



DESCRIPTION	DIMENSIONS	No
POSTS	100 x 45 x see Note 3	2
RAILS	38 x 87 x 509	3
PADDLE	150 x 38 x 1200	1
STOPS	150 x 38 x 87	2
COACH BOLTS	8mm dia	6
NAILS	100mm	16
HANDLE		2



PART SECTION A-A

Rev.	Description	Drawn	Ch'kd	Auth	Date


 in partnership with  

  
[www.viaem.co.uk](http://www.viaem.co.uk) Tel 0115 804 2100  
 Bilsthorpe Depot, Bilsthorpe Business Park, Bilsthorpe,  
 Nottinghamshire, NG22 8ST

Project		Highway Construction Details			Project	Drawn	Date
Status	Project No.	Rights of Way			Ch'kd	JLS	18/08/2020
Drawing Title		Dog-Gate			Auth	JD	16/02/2021
Drawing No.		SD/FP/09			Rev.	JP	JLS
					0		N.T.S @A4

Feb 16, 2021, 12:24pm I:\Highways\Design and Construction\Roads and Highways\Projects\18-19\2020020971 New Hwy Design Guide for New Dev\Design\CAD\New standard details\NCC-SD\RD\NSD\FP\_09.dwg