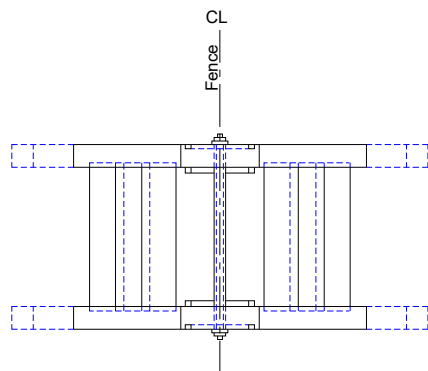
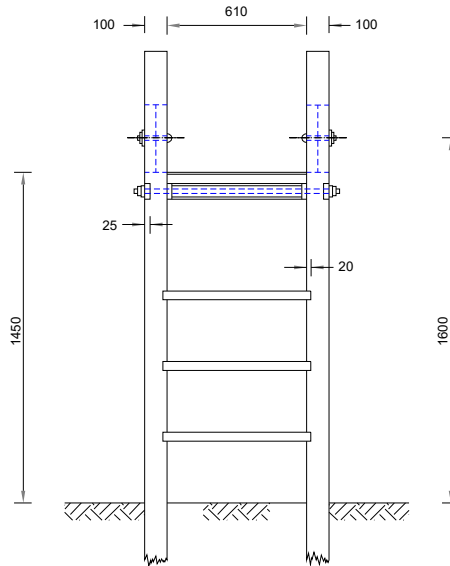
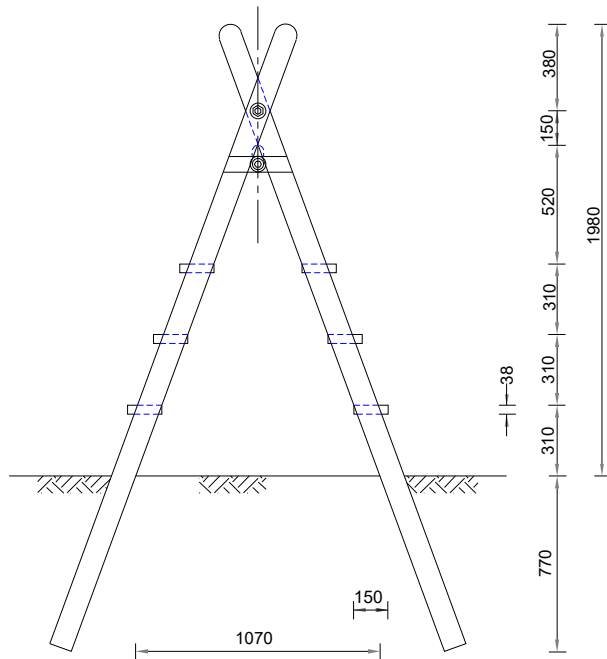


NOTES:

1. For Notes see Drg No SD/3/25.



DESCRIPTION OF MATERIAL	SIZE	FIXING AND FITTINGS
Timber Posts	Four 100 x 100 x 2900 long	Two 10 diameter x 115 long coach bolts complete with nuts and washers. Each post shall be halved where it crosses the other post.
Steel through bolt and pipe spacer		One 13 diameter shank x 850 long threaded for 25 at each end complete with two nuts. Four 50 diameter x 3 washers and with one 554 long pipe spacer.
Timber Treads	Six 150 x 38 x 650 long	Each tread secured to the posts by two 150 long x 6 round wire nails at each end. Treads to be housed in the posts.
Timber Crosshead	One 75 x 50 x 810 long	Top edge double chamfered, each end shaped to triangular section 100 either end.
Timber Cleat	Four 75 x 25 x 345 long	Secured to each post by two 100 long x 4 round wire nails dovetail driven.

Rev.	Description	Drawn	Ch'kd	Auth	Date


 in partnership with  
  
[www.viaem.co.uk](http://www.viaem.co.uk) Tel 0115 804 2100  
 Bilsthorpe Depot, Bilsthorpe Business Park, Bilsthorpe,  
 Nottinghamshire, NG22 8ST

Project		Highway Construction Details			Project	Drawn	Date
Status	Project No.	Fencing				JLS	19/08/2020
Drawing Title		Timber Stile -Type 2				JD	01/02/21
Drawing No.		SD/3/32				JJP	JLS
					Rev.	0	Scale N.T.S @A4

Feb 01, 2021 - 2:28pm: I:\Highways\Design and Construction\Roads and Highways\Projects\18-19\2000020971 New Hwy Design Guide for New Dev\Design\CAD\New standard details\NCC SD300 Series\SD.32.dwg