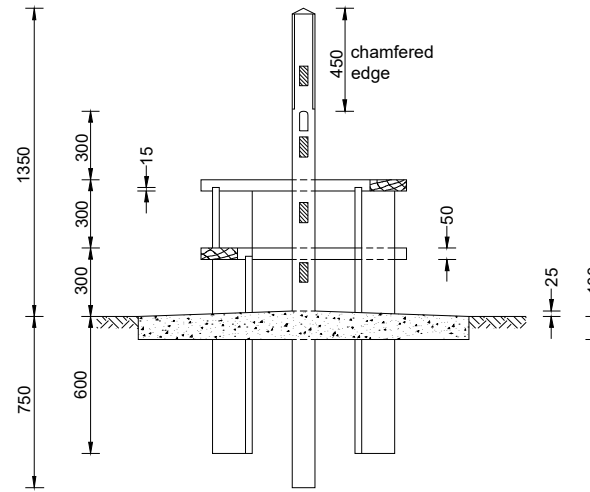
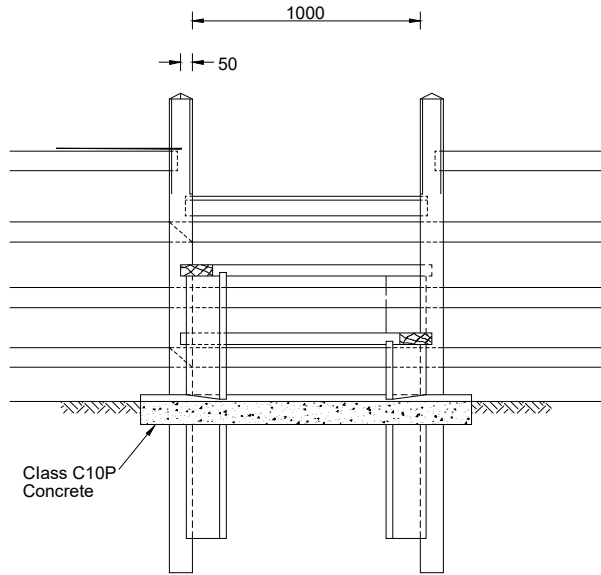
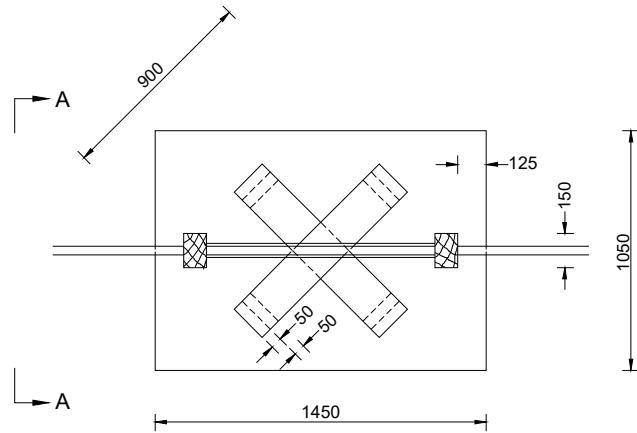


NOTES:
1. For Notes see Drg No SD/3/25.



SECTION A - A



DESCRIPTION OF MATERIAL	SIZE
Posts	100 x 150 x 2100 long
Crosshead wrought. Top edge double chamfered	87 x 38
Steps	175 x 50 x 900 long
Supports	Two 175 x 50 x 1165 long
Secured by two 100 long x 4 galvanised round wire nails skew driven	Two 175 x 50 x 865 long

Rev.	Description	Drawn	Ch'kd	Auth	Date



in partnership with
 Nottinghamshire County Council
www.viaem.co.uk Tel 0115 804 2100
 Bilsthorpe Depot, Bilsthorpe Business Park, Bilsthorpe, Nottinghamshire, NG22 8ST

Project		Highway Construction Details			Project	Drawn	Date
Status	Project No.	Fencing			JLS	JLS	19/08/2020
Drawing Title		Timber Stile -Type 1			Ch'kd	JD	Date
Drawing No.		SD/3/31			Auth	JP	Traced
					Rev.	0	Scale
					N.T.S @A4		