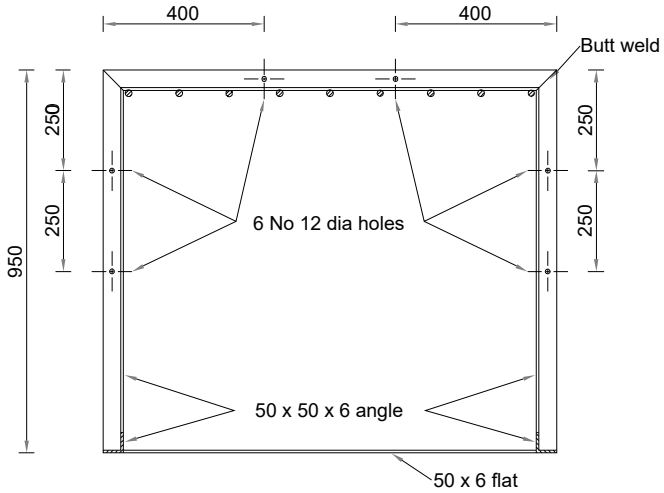
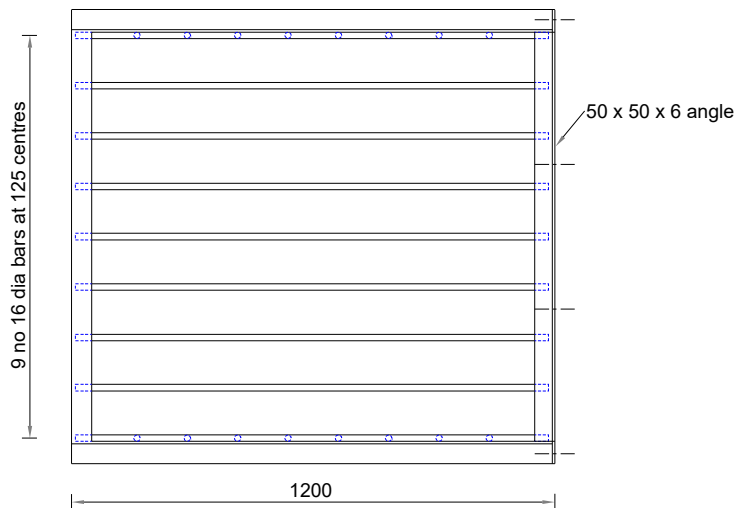


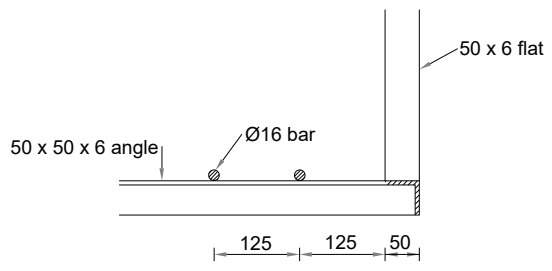
ELEVATION



SECTION A - A



PLAN



SECTION B - B
(Enlarged View)

NOTES:

1. All dimensions are in millimetres unless otherwise stated.
2. All steelwork to be galvanised in accordance with BS EN ISO 1461:2009 at 0.628kg zinc per sq m.
3. 6mm continuous fillet welds at all connections unless butt weld is specified.
4. Grille to be fixed to headwall using 6 no. M8 expanding loose bolt, zinc plated (rawlbolt type).
5. The grille shown can be used for pipes up to 750mm Ø. For larger pipes and box culverts, dimensions should be increased to suit the required size keeping bar spacing's at 125mm centres.

Rev.	Description	Drawn	Ch'kd	Auth	Date

via in partnership with **Nottinghamshire County Council**

www.viaem.co.uk Tel 0115 804 2100
 Bilsthorpe Depot, Bilsthorpe Business Park, Bilsthorpe,
 Nottinghamshire, NG22 8ST

Project		Highway Construction Details			Project	Drawn	Date
Status	Project No.	DRAINAGE			Drawn	JLS	12/06/2020
Drawing Title		Detail of Headwall Grille			Ch'kd	JD	26/06/20
Drawing No.		SD/5/29			Auth	JJP	Traced JLS
					Rev.	0	Scale N.T.S @A4

Jul 29, 2020 - 3:31pm I:\Highways\Design and Construction\Roads and Highways\Projects\6-19200002097 New Hwy Design\Guide for New Dev\Design\CAD\New standard details\NCC SD500 Series\SD.5.29.dwg