

TYPICAL DETAILS PRECAST CONCRETE CATCHPIT TO BS 5911

NOTES:

- For Notes see Drg No SD/5/16.

DEEP CATCHPIT

Depth to top of base slab 3.0m - 6.0m

Maximum 4 courses, minimum 2 courses Class B engineering bricks. Mortar and bedding material as stated on Drg No SD/5/18

See Note 14

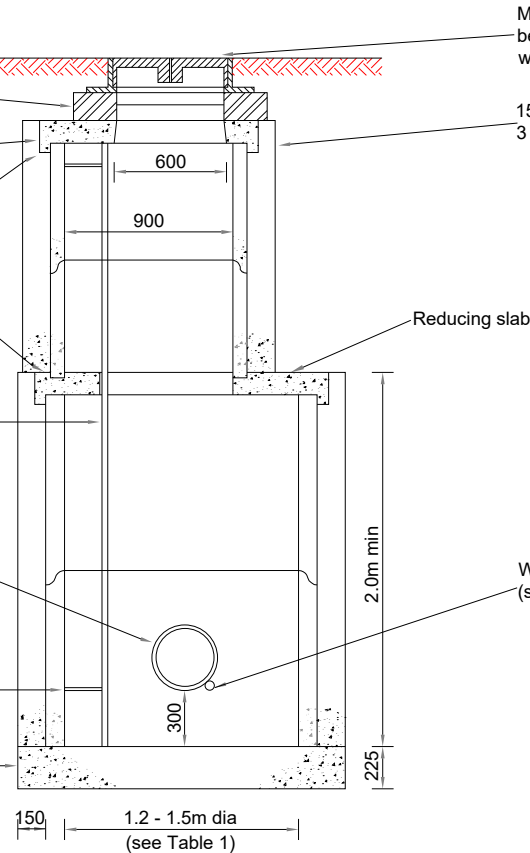
Cover slab, reducing slab and sections bedded and jointed in Class 1 mortar to Clause 2404

Galvanised ladder (BS 4211) minimum distance from wall 150mm. Maximum 675mm from cover to first ladder rung (see notes 13 & 17)

End of pipes to be neatly built into wall and finished flush with Class 1 mortar to Clause 2404

At least 2 stays to be provided for ladder. Maximum spacing of stays 3m

Base slab in GEN3 (16/20) concrete



SHALLOW CATCHPIT

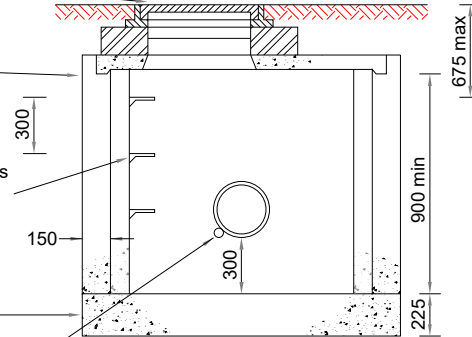
Depth to top of base slab 1.2m - 3.0m (see note 9)

Manhole cover and frame bedded on mortar in accordance with Drg no SD/5/18

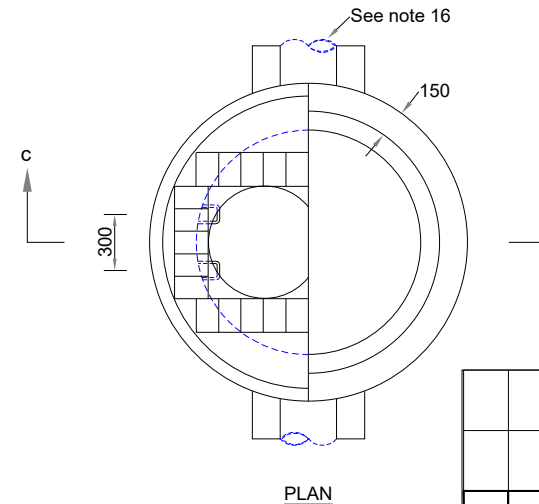
150 surround in GEN 3 (16/20) concrete

Galvanised step irons to BS 13101 staggered at 300 c/c

Base slab in GEN3 (16/20) concrete



SECTION C - C



PLAN

TABLE 1

OUTLET PIPE DIA (mm)	CHAMBER DIA (mm)
100 - 300	1200
375 - 450	1350
525 - 600	1500

Rev.	Description	Drawn	Ch'kd	Auth	Date



in partnership with



www.viaem.co.uk Tel 0115 804 2100

Bilthorpe Depot, Bilthorpe Business Park, Bilthorpe, Nottinghamshire, NG22 8ST

Project		Highway Construction Details			Project	Drawn	Date
Status		DRAINAGE				JLS	11/06/2020
Drawing Title		Catchpits group CP1 - Pre-cast Concrete Catchpits				JD	25/06/20
Drawing No.		SD/5/19a				JJP	JLS
						0	N.T.S@A4