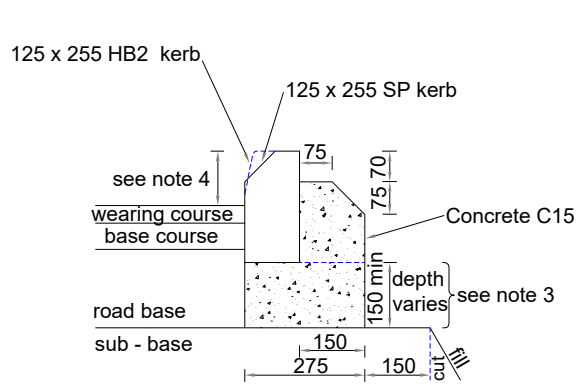
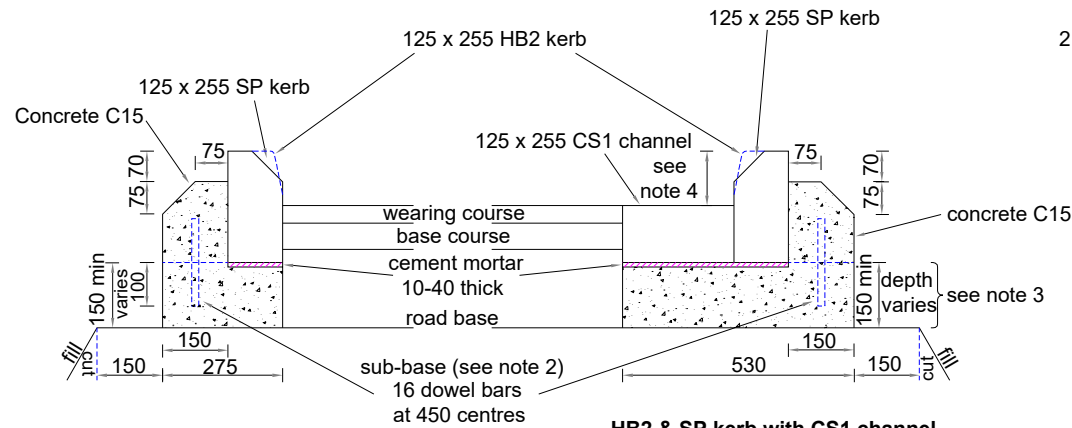


NOTES:

1. All dimensions are in millimetres unless otherwise stated.
2. For Notes see Drg No SD/ 11/ 1A

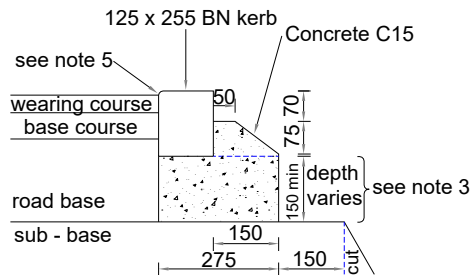


HB2 & SP kerb - construction A
(kerb base, kerb and kerb backing laid before concrete sets)

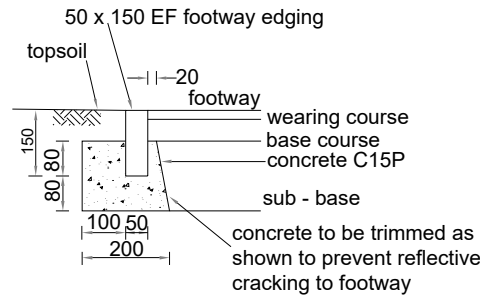


HB2 & SP kerb - construction B
(kerb base set prior to laying kerb and kerb backing)

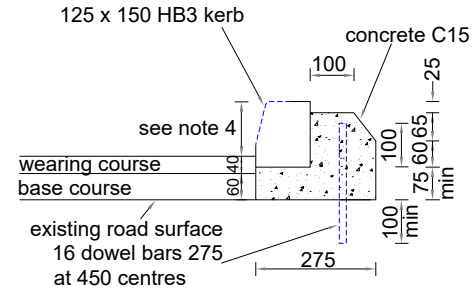
HB2 & SP kerb with CS1 channel - construction B



BN 'dropped' kerb - construction A
(if construction B is used the 16 dowel bars are 150 long with 50 above kerb base)



Footway edging EF - 150
(for EF-200 and EF-250 see Drg No SD/ 11/ 3)



HB3 kerb
(kerb laid above existing carriageway surface)

Rev.	Description	Drawn	Ch'kd	Auth	Date



in partnership with
 Nottinghamshire County Council
 www.viaem.co.uk Tel 0115 804 2100
 Bilsthorpe Depot, Bilsthorpe Business Park, Bilsthorpe, Nottinghamshire, NG22 8ST

Project		Highway Construction Details			Project	Drawn	Date
Status	Project No.	Kerbs, Footways And Paving			JLS	16/06/2020	
Drawing Title		Kerbs, Channels And Footway Edgings			JD	30/07/20	
Drawing No.		SD/11/02			JP	JLS	
					Rev.	0	Scale
							N.T.S @A4