

Alphabet Challenge!



Learning Objectives:

- **In this activity, we will be looking at and reinforcing alphabetical order.**
- **We will also be trying to identify some of the benefits of walking to and from school.**

A B C D E F G

What is the Alphabet Challenge?

Your literacy challenge this week is to try to find something beginning with EVERY letter of the alphabet whilst walking to school!



**Schools
GoSmarter**

Choose Your Level!

HARD

EASY

MEDIUM

Choose Your Level!

HARD

On this level, you choose to go it alone! Your mission on foot is to spot something beginning with every letter of the alphabet on the way to school.

MEDIUM

Less risky! You can work in a pair.

EASY

Well, quite easy! You are opting to get together for the challenge with a group of people from your class.

Pairs and teams don't have to walk together – they can just share what they spotted on the way to or from school when they are back in class.








The Alphabet Challenge

If you usually come to school by car, try walking instead, even if it's just for the last part of the journey.

Here is a table that you can use to record what you spot:



Home	A	B	C	D	E	F
G	H	I	J	K	L	M
N	O	P	Q	R	S	T
U	V	W	X	Y	Z	School

Home	A		C	D	E	F
G		I	J	K		M
N	O	P	Q	R	S	
U	V		X	Y	Z	School

Last week, Katie spotted the following things on her way to school:

A frog

Litter bin

A donkey

A motorbike

Trees

A beetle

A ladybird



An ambulance

Flowers

Puddles

Stones

A pond

A zebra crossing

A worm

**How would this list look if we arranged them
in alphabetical order?**

A B C D E F G

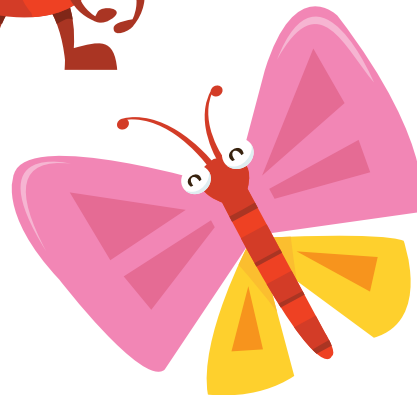
H I J K L M N

O P Q R S T

U V W X Y Z

Schools GoSmarter

frog
litterbin
donkey
worm
trees
beetle
ladybird
ambulance
flowers
puddles
stones
pond
zebra crossing
motorbike



ambulance
beetle
donkey
flowers
frog
ladybird
litterbin
motorbike
pond
puddles
stones
trees
worm
zebra crossing

**Schools
GoSmarter**

At the end of **The Alphabet Challenge we will make a whole class alphabet collection, with the best and most unusual items spotted while walking to or from school.**



Schools GoSmarter

Remember, that it's much easier to observe things **on foot** than in the car, since you are **moving more slowly**, you can **choose your route** more easily and can **stop** when you want to **look** at things **more closely**.

Who can remind us of the **other benefits** of walking to school?



Good Luck with the Alphabet Challenge!

**Well done to everybody who can find anything
beginning with **X** and **Q**!**

**What can you find on your walk to (or from)
school?**

