



# Inspire Learning

## Nottinghamshire

LEARN  
& EARN

**16 – 24 Study  
Programmes**

[Inspireculture.org.uk/study-programmes](https://inspireculture.org.uk/study-programmes)  
01623 476 830 | [learning@inspireculture.org.uk](mailto:learning@inspireculture.org.uk)

 @InspireLearning1624  @Learn\_Inspire #BeInspired #InspireLearning

# Grow. Learn. Achieve.

Inspire Learning aims to provide you with outstanding learning experiences that enable you to make positive changes to your life.

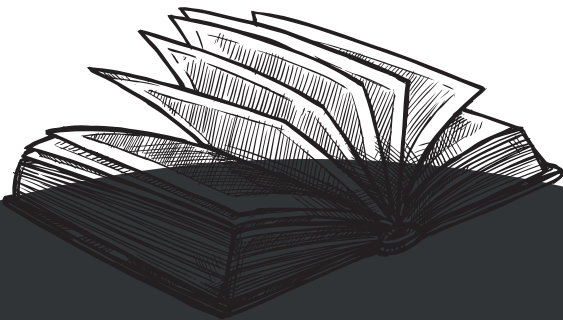


"This is my sixth year with the organisation and every single day I continue to be impressed by the difference our experienced and caring tutors make to the lives of young people. It's the time and effort that they put into every young person who comes through our door that makes our study programmes unique.

Whatever your barriers to education, whatever negative experiences you've had in the past, I'm positive that you'll find our approach to your education a fresh and encouraging start. The rest is up to you!"

**Simon Cook**

Study Programme Manager



STUDY PROGRAMMES FOR  
YOUNG PEOPLE  
MAKE A DIFFERENCE!

GAIN NEW SKILLS  
#IAMINSPIRELEARNING  
TRAINEESHIPS



InspireLearning1624

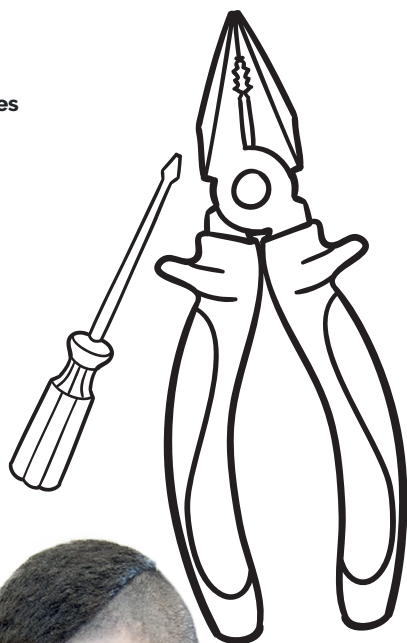


@Learn\_Inspire

Contact: 01623 476 830 | [learning@inspireculture.org.uk](mailto:learning@inspireculture.org.uk) | [inspireculture.org.uk/learning](http://inspireculture.org.uk/learning)

## Contents:

- 02 | **Who We Are**
- 02 | **Welcome to Inspire Learning 16 – 24 Study Programmes**
- 03 | **Maths and English**
- 04 | **AIM Awards in Employability and Personal and Social Development Level 1 and Level 2 (AAA)**
- 05 | **Supported Internships**
- 06 | **AIM Awards in Employability and Personal and Social Development Level 1 and Level 2**
- 07 | **Where Can I Learn**
- 08 | **City & Guilds Level 1 Certificate: Introduction to the Hospitality Industry**
- 09 | **City & Guilds Level 2 Diploma in Hospitality Services**
- 10 | **City & Guilds: IT User Skills Level 1 and Level 2**
- 11 | **AIM Awards Level 1 and 2 in Bricklaying and Construction**
- 12 | **AIM Awards Level 1 and 2 Painting and Decorating**
- 13 | **AIM Awards Level 1 and 2 in Carpentry and Joinery**
- 16 | **City & Guilds Health and Social Care Level 1**
- 17 | **City & Guilds Health and Social Care Level 2**
- 19 | **Traineeships**
- 20 | **Work Experience**
- 21 | **Enrichment and Community Projects**
- 23 | **Learning Journey**
- 24 | **Base Contact Details and How to Enrol with Us**



# Who We Are

Inspire Learning delivers a range of services on behalf of Nottinghamshire County Council, and the Education and Skills Funding Agency (ESFA).

We're part of Inspire Culture, Learning and Libraries which is a Community Benefit Society. Our mission is to inspire people to read, learn and enjoy culture. We are dedicated to helping people to be the best they can be.

Inspire manages Nottinghamshire Libraries, learning, archives and several cultural services.

Our services for schools include Instrumental Music Teaching and the Education Library Service.

Inspire learning delivers educational services for the whole community, enabling Nottinghamshire residents to develop their skills by following courses tailored to meet their needs.

## Inspiring future success!



**Miner2Major**  
The Real Sherwood Forest

**We're really excited to be a delivery partner in a new project called Miner2Major.**

Miner2Major is a 5 year landscape partnership scheme. The scheme will reconnect Sherwood Forest's sense of place, its ancient woodlands, heartlands and cultural heritage by inspiring future success for the people of Nottinghamshire from legends of the past.

Supported by:



# Welcome to Inspire Learning 16–24 Study Programmes

Inspire Learning Study Programmes prepare young people not only for the world of work and further education, but for life.

- Learn from tutors who really care about your progress and wellbeing
- Improve your English and Maths
- Gain employability skills on community and work placements
- Get to know people with similar experiences, interests and goals and make new friends
- Go on fun, educational trips
- Volunteer for local projects to make a positive difference
- Build your confidence by improving interpersonal skills

## Earn as you learn!



**All learners will receive:**

A bursary of up to £20 a week; help with travel expenses; individualised help and support to reach realistic but challenging targets.





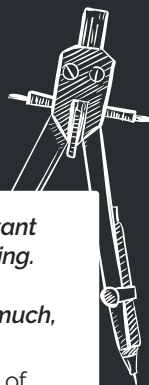
# Maths and English

**Employers are looking for candidates with qualifications in Maths and English, and the underpinning skills that these give, so they can be sure that you can operate with confidence in a working environment.**

Employers want to see young people who are confident with numbers, able to communicate effectively, and who can understand written and verbal instructions. Therefore, Maths and English are a key part of our Study Programmes.

We provide OCR GCSEs (9–1) in English Language and Mathematics. Depending upon your previous grades and experience, we'll place you on a Maths and English programme that suits you. This could be Functional Skills, or if you've previously achieved a 3 or D, GCSE.

Functional Skills aim to place Maths and English within real world contexts, whether in the workplace or just your everyday life. It could relate to working out the right amount of wallpaper to buy, the number of bricks to use, or it could be writing a job application or a letter of complaint to your local MP! The emphasis is on **FUNCTIONAL** – the things that help you function effectively at work and in life.



## JACK'S STORY:

**Jack Dearden** from Mansfield left school with no GCSEs and had almost given up when he decided to enrol on a study programme with Inspire Learning.

Building his confidence throughout the study programme, Jack decided to continue his learning following successful completion of Functional Skills in English, and take the courageous step of working towards GCSE English Language, which he had previously failed to achieve.

Jack says *"I was inspired to progress to GCSE English Language because I had been doing my best successfully with the Functional Skills course."*

Jack continued, *"I really enjoyed learning the subjects that I was taught by the tutors at Westfield Folkhouse and gained a better understanding of unfamiliar topics. I also enjoyed the staff*

*teaching me interesting and important material in the subjects I was learning. I started to really enjoy Maths and English because I was learning so much, it became enjoyable."*

Jack was a runner up in the learner of the year category at the 2017/18 Inspire Awards, he achieved a 4 in Maths and a 5 in English, and is now working part time at local company Linneys, where he completed a work placement as part of his course.



$$S_n = \frac{a_1 - a_1 r^n}{1 - r}$$



# AIM Awards in Employability and Personal and Social Development Level 1 and Level 2 (AAA)

The Access All Areas (AAA) programme was created to help young people with learning difficulties and disabilities improve their skills and independence.

Young people are encouraged, supported and trained to take control of their own life and create a path forward for themselves by following our tailored programmes.

We cover many subjects throughout the year.

## You can expect:

- Personal and emotional resilience
- Work placements
- Building confidence and self-esteem
- Independent living skills
- Health and safety

## Progression Routes:

- Vocational Courses
- Traineeship
- Supported Internship

## Location:

- Mansfield MyPlace at Westfield Folkhouse



"I LOVE INSPIRE LEARNING'S AAA COURSE... STAFF ARE MUCH FRIENDLIER THAN LARGER COLLEGES..."

## JOANNE, SARALEE'S MUM SAYS...

"Inspire has changed Saralee. She is calmer, she can now talk to adults about her problems and her behaviour has changed a lot. She meets up with her friends after college and she would have never done that before. I want to say thank you to the brilliant staff. They have so much time for my daughter and they listen to me too".

## SARALEE'S STORY:

"I love my AAA course because it is a lot smaller, safer and the staff are much friendlier than larger colleges. I really enjoy the social side and meeting new friends — I feel like we are a huge family. I used to be shy and quiet. My confidence has increased so much. I now even volunteer once a week at a local church to help run their toddler group".

# Supported Internships

**What are they?** Supported Internships are study programmes which can last up to a year. The most important element of a supported internship is that the majority of your learning and experience happens in the workplace rather than in the classroom.

You'll be doing real work with a real employer carefully chosen by Inspire with your input. You'll also be able to improve your Maths, English and ICT skills but in a way that relates to work and is tailored especially for you.

## Do I need any qualifications to do a Supported Internship?

**NO!** The most important thing is your desire and your readiness to work. Employers are always ready to give chances to those who work hard, make a contribution and fit into their team. All you need is to be aged 16–25 and have a current Education, Health and Care Plan.

## Will I get any support in the workplace?

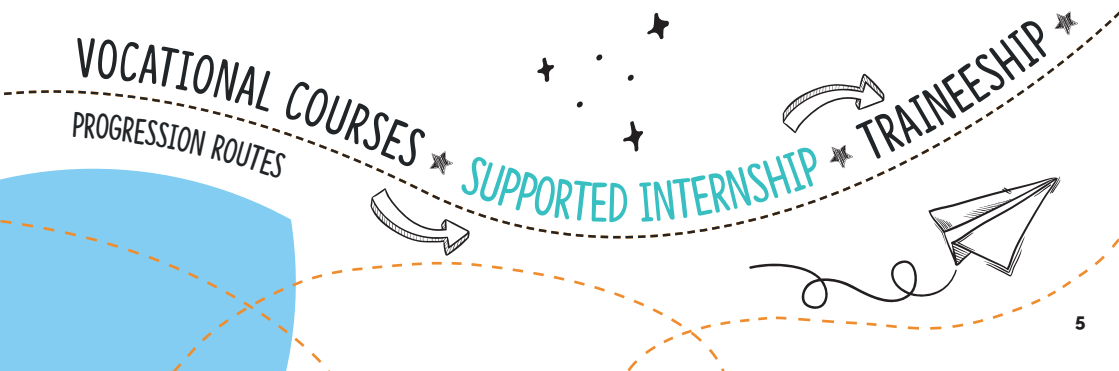
**YES!** A key feature of a Supported Internship is the help of a job coach to support you in your first steps in the workplace. This will likely be a member of Inspire's educational support team – a person who you've already worked with and got to know. The job coach will be there to show you how to do the job and support you with any questions or concerns you may have.

## How long does a Supported Internship last and how often will I attend?

**Although most supported internships begin in September and last for up to a year,** they can begin at any time of the year and be tailored to your needs. It will usually involve at least three days a week with the employer in conjunction with some employability or Maths and English training at one of our bases. It all depends on your starting point and what suits you.

## What happens at the end?

**All our employers must commit to having suitable jobs available.** Although we cannot promise employment at the end, the aim is that at least two thirds of interns move into roles with their given employer. Where this does not happen, we will support you to make the most of your experience and enhanced CV to try and find employment elsewhere, or perhaps progress to a traineeship or apprenticeship.



# AIM Awards in Employability and Personal and Social Development Level 1 and Level 2

We work with young people with a range of barriers to learning such as anxiety, behavioural issues, learning difficulties, social and emotional issues and disabilities.

We enable them to gain further training or employment and to be responsible citizens who make a positive contribution to society. Above all, we aim to make learning with us fun, engaging and most of all, fulfilling, giving you the tools to make the next step in your journey.

AIM Awards Employability Skills are designed to encourage the development of values and personal attributes which contribute to success in the work place and support students to become emotionally, socially and physically healthy.

Students work towards AIM Awards consisting of different combinations of units, which aim to cultivate a positive attitude towards work and other people.

**Award in Personal and Social Development includes:**

- Healthy Living
- Interpersonal Skills

**Certificate in Progression in Employability includes:**

- Stress Management
- Emotional Resilience
- Career Planning
- Health and Safety in the Workplace
- Assertiveness and Decision Making

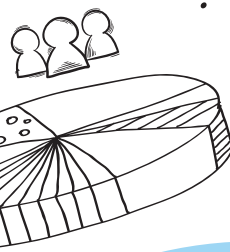
Students will also take part in a range of enrichment activities which promote an understanding of equality, diversity and inclusion, and British Values.

## Progression Routes:

- Other Vocational Courses
- Traineeship
- Supported Internship
- Employment

## Location:

See adjacent map for locations



BE CAREER READY





# Where Can I Learn?

## Personal and Social Development Bases



### BASSETLAW

- Worksoop Library
- Retford Young People's Centre

### MANSFIELD

- MyPlace @ Westfield Folkhouse

### ASHFIELD

- Hucknall Young People's Centre
- Eastbourne House, Sutton in Ashfield

### BROXTOWE

- Eastwood Young People's Centre
- Stapleford Young People's Centre

### NEWARK AND SHERWOOD

- Newark Library
- Ollerton Dukeries Young People's Centre



# City & Guilds Level 1 Certificate: Introduction to the Hospitality Industry

Are you interested in working in the Food and Drink Industry? Do you like talking to and meeting new people or do you like to work behind the scenes?

Mansfield has lots of work placements and jobs to offer in the food, drink, entertainment and hospitality industry. You might want to work as a Chef, Kitchen Assistant, Waiting Staff or Hotel Receptionist.

During your time with us you'll cover subjects such as: customer service; serving food and drink; using kitchen equipment; basic food preparation; and food safety.

No experience is necessary to join.

## You can expect:

- Tutors to use the most up-to-date teaching resources to make the classroom lively, fun and entertaining!
- Some classroom work – you can write, or word process your work using laptops
- Practical cookery sessions with your tutor, in small groups and with 1:1 help at all times
- Exciting trips relating to the hospitality industry such as hotels and restaurants, theme parks and leisure parks
- A choice of work placement or community projects to get involved in

## Progression Routes:

- Level 2 Diploma in Hospitality Services
- Traineeship
- Apprenticeship
- Level 2 courses
- Employment

## Location:

- Mansfield



# City & Guilds Level 2 Diploma in Hospitality Services

Our City & Guilds Level 2 Diploma in Hospitality Services is an excellent course if you are looking for a career in the Hospitality Industry or just want to improve your culinary skills.

This is a natural progression from the Level 1 Hospitality course and many of our learners make this their next step. This course is open to those who hold a Level 1 qualification in Hospitality or experience in the industry.

## You can expect:

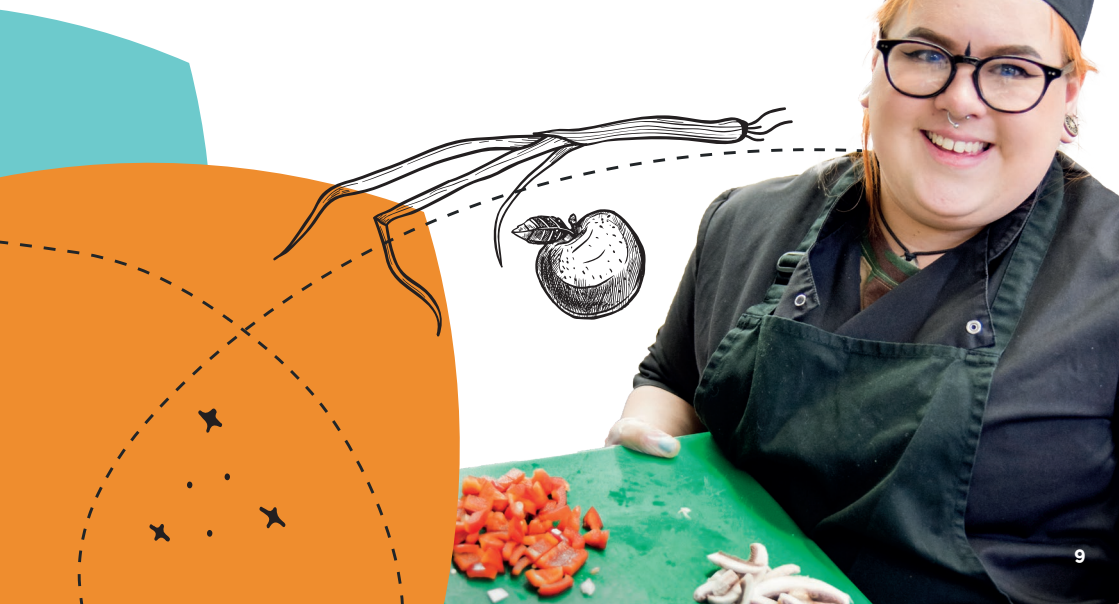
- To cover a range of practical and theoretical units in a purpose-built commercial kitchen to give you an idea of real-life experiences of a busy fast paced industry
- To learn the correct culinary knife skills and cutting techniques as well as producing complex meals from scratch
- To work as part of a team, offering customer service at real life events
- To gain a Level 2 Food Safety Qualification as well as the skills and ability to create dishes from a variety of ingredients using different cooking techniques

## Progression Routes:

- Level 3 Diploma in Hospitality Services
- Traineeship
- Apprenticeship
- Employment
- Level 3 courses

## Locations:

- Mansfield
- Sutton-in-Ashfield



# City & Guilds: IT User Skills Level 1 and Level 2

With our City & Guilds IT User Skills at Level 1 or 2 you can develop your existing IT knowledge and learn new skills using word processing, presentation and spreadsheet software.

You could also boost your CV and career opportunities with a work-related qualification.

You will benefit from a supportive, relaxed learning environment working with engaging and relevant content using interactive teaching methods.

## New to IT?

**Our Certificate for IT Users is for anyone who works, or wants to work with computers and has little or no experience with IT. No prior qualifications are needed.**

You can build your skills and gain the confidence you need to work effectively with computers.

With the growth of digital technology, this qualification will enable you to make use of ICT within a number of job roles where use of digital technology is a required knowledge and skill set. Designed to meet the needs of employers, these hands-on, applied qualifications give you the opportunity to gain a nationally recognised vocational qualification and progress to employment or further education in the IT sector.

### Progression Routes:

- Level 3 City & Guilds Qualification
- Traineeship
- Apprenticeship
- Employment

### Locations:

- Mansfield
- Sutton-in-Ashfield

### DID YOU KNOW

*...that nearly 80% of the UK workforce use IT in the workplace? IT improves productivity and organisations are using digital technologies to save almost 20% of time in their working week.*





# AIM Awards Level 1 and 2 in Bricklaying and Construction

**Interested in pursuing a career in construction?**  
**Our course at Eastbourne House, Sutton-in-Ashfield could provide you with your first steps into the industry.**

New students will enter at Level 1. Progression throughout the course will be assessed by the completion of theory and practical work modules.

No final test examinations are required to complete the learning, just ongoing evidence of you performing real construction tasks, such as:

- **Learning the mandatory health and safety requirements for all persons working in industry**
- **Learning, using and developing brickwork trowel skills**
- **The basic principles of brickwork construction, setting out, building level, plumb and to gauge**
- **Building half brick wide walls, one brick wide walls, cavity walls and block walling**

Students completing Level 1 Construction will be eligible to undertake Level 2 accreditation. This course follows the same route progression, involving more complex structures, different brickwork bonds and working towards producing a professional, industrial standard of workmanship.

## Progression Routes:

- Level 2 Course in Bricklaying
- Other Vocational Courses
- Traineeship
- Apprenticeship
- Employment

## Locations:

- Eastbourne House, Sutton-in-Ashfield



# AIM Awards Level 1 and 2 Painting and Decorating

Our well-established programme at Eastbourne House, Sutton-in-Ashfield provides young people with their first steps in a career in painting and decorating.

This involves learning about customer relations and expectations, working in a construction environment and understanding and developing new skills with the use of different tools.

## We also cover:

- Health and safety and good practice in the workplace
- Good housekeeping
- Smoothing down walls in preparation for decorating
- How to remove defects in a wall and woodwork
- How to apply varying paint finishes with different types of paint
- Basic wallpapering both on walls and ceilings
- How to finish work to a high standard

The Level 1 course aims at developing basic skills which will allow the opportunity to move onto the Level 2 course.

## Progression Routes:

- Level 2 Painting and Decorating
- Other Vocational Courses
- Traineeship
- Apprenticeship
- Employment

## Locations:

- Eastbourne House, Sutton-in-Ashfield



# AIM Awards Level 1 and 2 in Carpentry and Joinery

Want to learn the skills and progress in the vocational areas of Carpentry and Joinery?

Many learners in the past have moved on from here to gain employment within the industry. You will gain the skills needed to be competent in this vocational area.

## Skills such as:

- Health and safety in the workplace
- Knowledge of hand tools
- Knowledge of basic joinery processes
- Knowledge of fixings and materials

Your skills will be assessed over the year rather than having an end test.

Our programmes also give you a chance to develop skills such as communicating with others, working as a part of a team, improving your confidence before you take that next step towards becoming employed.

## Progression Routes:

- Level 2 Carpentry and Joinery
- Other Vocational Courses
- Traineeship
- Supported Internship
- Apprenticeship
- Employment

## Locations:

- Eastbourne House, Sutton-in-Ashfield





# Learner Case Study

“IT HAS HELPED ME LEARN A LOT OF NEW THINGS AND HAS BEEN A GREAT EXPERIENCE.”

giving  
nature  
RSPB a home

## HANNAH JAMES

### Level 2 Hospitality Services

“I started my Level 2 Catering Course here at Inspire last September. It has helped me learn a lot of new things and has been a great experience. All the staff are very welcoming and approachable and are happy to help with any issues. The building is also cosy and welcoming and there's always plenty to do during lunchtimes and breaks.

Thanks to Inspire, I've also gained good work experience with the RSPB at Sherwood Forest Visitor Centre Café. I've really enjoyed learning new things as a Barista. I've been serving customers, making drinks, cleaning and learning till work. In the future I hope to go in to management in the hospitality and catering sector”.





# Meet the Tutor

"MY FAVOURITE WORDS ARE, 'I CAN'T DO MATHS!' AS I KNOW THAT EVERYONE CAN - GIVEN ENOUGH CONFIDENCE AND THE RIGHT LEARNING OPPORTUNITIES."

"YOUNG PEOPLE ARE ALWAYS SURPRISING, AND IT IS A PRIVILEGE TO BE A PART OF THEIR EDUCATIONAL JOURNEY..."

$$\log_n m = \frac{\log m}{\log n}$$

$$\cos(-x) = \cos(x)$$

## MADELEINE CHAMBERLAIN

### Maths and English Tutor

"I haven't always been a Functional Skills/GCSE tutor and I haven't always lived in the East Midlands. In the 30-something years since I left school I have worked in Vancouver, Los Angeles, Poland, Ibiza and the Alps.

My first 'proper' job was teaching Science and PE in a comprehensive in the North East - I must have liked it as I stayed there 11 years!

I am now in my sixth year teaching at Inspire Learning. As a tutor of Functional Skills and GCSE, I get the opportunity to work with learners from across the county, in a different place each day. I love the fact that no two days are the same!"

# City & Guilds Health and Social Care Level 1

Our Level 1 Health and Social Care programme introduces learners to the sector by exploring the range of roles, provisions and personal qualities.

We aim to build an awareness of the protection of vulnerable adults and the safeguarding of children and look at the policies and procedures that are in place to support this.

## You can expect to learn:

- Signs of harm, abuse and neglect and know what to do if you encounter these
- To identify verbal and non-verbal communication and methods that may help to remove barriers
- The importance of equality and inclusion in care and how carers can ensure this takes place
- The laws that enforce equality and inclusion

## Specific to children, you can expect to learn:

- The expected pattern of growth and development (0-19 years)
- Communication
- Intellectual, social, emotional and behavioural factors that may affect physical growth and development
- The effects of ageing later in life

You will be introduced to dementia and why it is important to recognise and value individuals with dementia. You will look at the causes, effects on family members and carers and the benefits of effective communication. The course also offers the opportunity to develop techniques to facilitate communication with those living with dementia.

## Progression Routes:

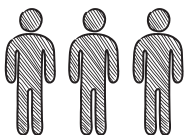
- Level 2 Health and Social Care
- Other vocational courses
- Traineeship
- Supported Internship
- Apprenticeship
- Employment

## Locations:

- Eastbourne House, Sutton-in-Ashfield



EQUALITY INCLUSION



# City & Guilds Health and Social Care Level 2

As part of the Level 2 programme, you will achieve a Level 2 Certificate in Preparing to Work in Adult Social Care, gaining in-depth knowledge and understanding of the 9 main topics that are relevant to working in the adult social care sector, such as:

- Introduction to duty of care in health, social care or children's and young people's settings
- Principles of communication in adult social care settings
- Principles of personal development in adult social care settings
- Principles of diversity, equality and inclusion in adult social care settings
- Principles of safeguarding and protection in health and social care
- Understanding the role of the social care worker
- Understanding person centred approaches in adult social care settings
- Understanding health and safety in social care settings
- Understanding how to handle information in social care settings

This is an excellent opportunity to learn how to apply the principles of person-centred approaches in a safe and effective manner.

## Progression Routes:


There are opportunities to accredit prior learning should you continue your learning via a traineeship or apprenticeship, providing you with a great starting point for a career in adult social care.



SOCIAL CARE  
SAFEGUARDING EQUALITY



# Meet the Tutor

A portrait of Paul Wilson, a man with a beard and blue eyes, wearing a green sweater over a blue and white checkered shirt. The background is a blurred indoor setting.

"I HAVE BEEN INVOLVED IN THE EDUCATION SECTOR FOR A NUMBER OF YEARS NOW, HELPING PEOPLE BECOME THE BEST POSSIBLE VERSIONS OF THEMSELVES."

A dashed orange line graphic that starts as a circle on the left, loops around the bottom, and ends as an arrow pointing towards the text box.

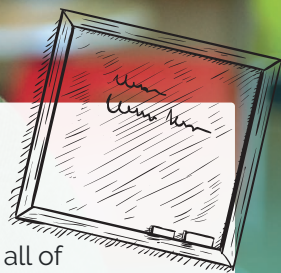
**PAUL WILSON**

**Traineeship Tutor**

"I'm Inspire Learning's dedicated Traineeship Tutor, covering all of Nottinghamshire. For around 5 years, I have been involved in the education sector, helping people become the best possible versions of themselves.

I have worked in many different job areas such as retail, hospitality, call centres and now the education sector, so I think I have a good understanding of what it takes to get started in work.

For my sins, I am a Nottingham Forest fan, so I know the virtues of working very hard to succeed and that overachievement is always possible. I come from a sporting background, both playing and studying, and through this I have learned that teamwork, communication and determination are skills that are important in any walks of life, and this is what I try to communicate to all of my learners".





# Traineeships

A Traineeship is a study programme for young people aged 16–24 who want to spend less time in the classroom and more time in the workplace. They're designed to help you gain the vital experience and skills to improve your chances of getting an apprenticeship or employment.

Traineeships can last up to a maximum of 6 months and will include:

- Work preparation and employability training provided by us at one of our 9 bases.
- An English and Maths qualification (even if you've already gained a C or a 4, you can still work towards Functional Skills to add that extra value to your CV).
- A high-quality work experience placement with an employer. Inspire have a number of established employers who offer opportunities to our young people each year.

In addition to these basic elements, you'll cover Equality, Diversity and Inclusion and British Values, which are vital in the modern workplace.

At the end of the traineeship, each young person will be guaranteed a job interview at that workplace if a role becomes available, or an exit interview together with support from their tutor to help them secure an apprenticeship or a position with another employer.




## KAYCIE MCCARTHY

### Traineeship

"I joined Inspire because I wasn't ready to go to a large college. I started on a Personal and Social Development course, moved to a Health and Social Care course and then a Traineeship. Throughout my time with Inspire, my confidence has increased so much and my anxiety is a lot better. I have even passed my Functional Skills Maths and English.

The staff are so helpful and you can talk to them at any time, even during breaks and lunchtimes. Thanks to the confidence I gained from my Traineeship, I have now secured an Apprenticeship in a nursery!"



"MY CONFIDENCE HAS  
INCREASED SO MUCH  
AND MY ANXIETY  
IS A LOT BETTER!"

# Work Experience

**Work Experience is a vital ingredient of Inspire Learning's Study Programmes and is tailored to suit the needs and experience of each individual young person.**

It could be that you are yet to take your first steps into the workplace. It could be that you feel you're much closer to a job and are ready to take on something more substantial, such as two or three days a week with an employer over the period of a few months. Either way, we'll support you to reach your potential and your personal goals.

Inspire Learning recognises that a 'one size fits all' approach to work experience just doesn't work and we listen to your concerns and your ambitions to provide the best experience for you, regardless of your starting point.



REACH FOR YOUR GOALS WITH OUR SUPPORT



# Enrichment and Community Projects

Below are just some of the enrichment and community projects you can get involved in throughout your time with us:

## THE FORESTRY COMMISSION



We have a long-standing partnership with the Forestry Commission to allow you to gain experience of a full day of work, learn forestry techniques and enjoy working as a team. Pictured is one of our learners at a forest near Clipstone removing evasive species.



## HOMELESS PROJECT



Before Christmas 2018, learners took part in a rewarding project to help the homeless in Mansfield and Sutton-in-Ashfield. They baked cakes and sold them to raise funds and put warm clothing, food and toiletry packs together which were then handed out to homeless people on the streets. They also managed to raise over £101 for the The Hall Homeless Support Project.

## PHOTOGRAPHY PROJECT WITH NOTTINGHAM PHOTOGRAPHY HUB

Our partnership with Nottingham Photography Hub will improve your communication skills and open you up to different experiences and opportunities. You will learn how to take professional-standard photos, how to use a digital camera and editing skills. You'll also have the opportunity to visit some exciting places to capture the right shot. This year, we visited London and went on the London Eye.

Pictured on the left are our learners showcasing their brilliant work to family and friends at the recent Exhibition and Awards Ceremony where they received their Certificate of Achievement.



"THE REFRESHING AND UPLIFTING ENVIRONMENT WAS EXEMPLARY!"





# COMMUNITY AND FAMILY LEARNING WITH INSPIRE LEARNING!

We understand that studying for a formal qualification isn't for everyone — our family and community learning courses are designed with this in mind. We have hundreds of courses to choose from in a variety of subject areas such as:

- Arts and Crafts
- Health and Wellbeing
- English and Maths Functional Skills
- Work Skills
- Languages
- Food
- Computing and Technology
- Family Learning

Family Learning courses are FREE and are for parents/ carers to learn at the same time as their children.

**Search and book your place online at [inspireculture.org.uk/learning](http://inspireculture.org.uk/learning) or call 01623 677 200**

19+

Courses are free for those in receipt of certain benefits

# INSPIRE YOUTH ARTS

**Can all young people make great art?**

**We think so!** We believe that all young people should have the opportunity to access the highest quality arts; explore their own strengths and to make the unimaginable happen.

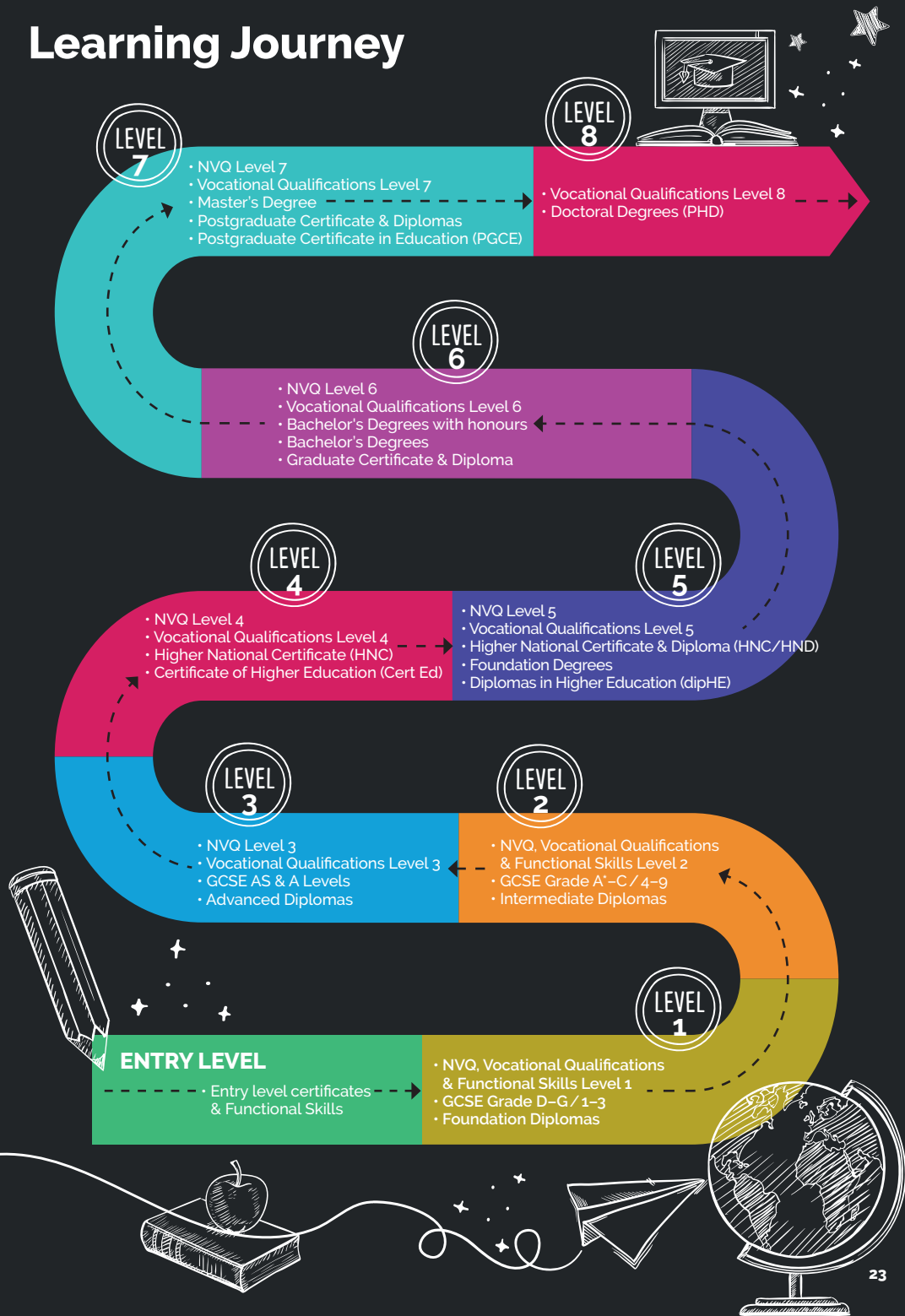
Join us and work alongside professional artists and companies and take part in projects, programmes and festivals across dance, music and digital.

**Visit [inspireculture.org.uk/iya](http://inspireculture.org.uk/iya) for more details.**





# Learning Journey



# Base Contact Details and How to Enrol with Us

You can join us at any time during the year! Enrol by calling us on the numbers below, by emailing [learning@inspireculture.org.uk](mailto:learning@inspireculture.org.uk) or just pop in and visit us.

## Base Contact Details

### Eastbourne House

Station Road, Sutton-in-Ashfield  
Nottinghamshire NG17 5JA  
Tel: 01623 476 830

### Myplace at Westfield Folkhouse

Westfield Lane, Mansfield  
Nottinghamshire NG18 1TL  
Tel: 01623 676 572

### Eastwood Young People's Centre

Kelham Way, Eastwood,  
Nottinghamshire NG16 3SG  
Tel: 01773 536 010

### Hucknall Young People's Centre

69 Linby Road, Hucknall  
Nottinghamshire NG15 7TX  
Tel: 01623 476 830

### Newark Library

Balderton Gate, Newark  
Nottinghamshire NG24 1UW  
Tel: 07500 923 193

### Dukeries Young People's Centre

Main Road, Boughton, Newark  
Nottinghamshire NG22 9JE  
Tel: 01623 860 673

### Retford Young People's Centre

Arlington Way, Retford  
Nottinghamshire DN22 6EA  
Tel: 01777 712 010

### Stapleford Young People's Centre

8 Church Lane, Stapleford  
Nottinghamshire NG9 8GB  
Tel: 0115 939 9212

### Workshop Library

Memorial Avenue, Worksop  
Nottinghamshire S80 2BP  
Tel: 01623 476 830



★ BOOK A PLACE ★ GET IN TOUCH! ★

STUDY PROGRAMMES FOR YOUNG PEOPLE

# DISCOVER YOUR LOCAL LIBRARY

**Libraries are an important part of our local communities and are at the heart of what we do at Inspire. Our libraries provide the hubs for our cultural activities and create knowledge through access to learning, information and opportunities.**

**At your local library you will discover:**

- A wide range of courses, including short courses, family learning, further and higher education courses, and study programmes
- Rattle, Rhyme and Roll and Storyhullabaloo free sessions for pre-school children
- Art workshops and exhibitions
- Author visits and book recommendations
- Family theatre, drama and dance
- Local heritage collections to find out more about your local past
- Audio books, DVDs, newspapers, large print and books in other languages
- Room hire for children's parties, meetings and events
- Use Wi-Fi, browse the Internet and use computers for free, and print or photocopy your documents

Join your library for FREE today [inspireculture.org.uk/join](https://inspireculture.org.uk/join)

Find out what's on at your local library [inspireculture.org.uk/whats-on](https://inspireculture.org.uk/whats-on)



**InspireLearning1624**



**@Learn\_Inspire**

**Contact us on: 01623 476 830 | [learning@inspireculture.org.uk](mailto:learning@inspireculture.org.uk)  
[www.inspireculture.org.uk/study-programmes](http://www.inspireculture.org.uk/study-programmes)**

Publications are available on our website at [www.inspireculture.org.uk](http://www.inspireculture.org.uk) and can be accessed using a screen reader. We can also provide alternative formats on request to [comms@inspireculture.org.uk](mailto:comms@inspireculture.org.uk)

Please note: Information included in the guide may be subject to change. For up-to-date information, please visit [www.inspireculture.org.uk](http://www.inspireculture.org.uk) or call 01623 476 830.





# Inspire Learning

## Nottinghamshire

LEARN  
& EARN

**16 – 24 Study  
Programmes**

[Inspireculture.org.uk/study-programmes](https://inspireculture.org.uk/study-programmes)  
01623 476 830 | [learning@inspireculture.org.uk](mailto:learning@inspireculture.org.uk)

 @InspireLearning1624  @Learn\_Inspire #BeInspired #InspireLearning