

Weekly COVID-19 Surveillance Report in Nottinghamshire



Cumulative data from 21/02/2020 - 16/08/2020

Overview

This report summarises the information from the surveillance system which is used to monitor the cases of the Coronavirus Disease 2019 (COVID-19) pandemic in Nottinghamshire (excluding Nottingham city). The report is based on daily data up to 16 August 2020.

COVID-19 cases are identified by taking specimens from people and sending these specimens to laboratories to be tested. If the test is positive, this is referred to as a lab-confirmed case.

Data includes lab-confirmed positive cases of COVID-19 from pillar 1 (NHS hospital and Public Health England laboratories) and pillar 2 (commercial partner laboratories) of the Government's testing programme.

There are many factors that can contribute to the number of cases in an area. As part of local outbreak control arrangements, a team meets daily to review information about new cases to identify where further investigation or action is required.

Technical details

The maps presented in the report examine counts and rates of COVID-19 at Middle Super Output Area level. Middle Layer Super Output Areas are a census based geography used in the reporting of small area statistics in England and Wales. The minimum population is 5,411 and the average is 8,363. As such they are larger than electoral wards but smaller than Districts.

Disclosure control rules have been applied to all figures not currently in the public domain. All counts of 1 or 2 have been suppressed.

Data has been sourced from Public Health England. The report has been compiled by Performance, Intelligence and Policy Team at Nottinghamshire County Council.

Weekly COVID-19 Surveillance Report in Nottinghamshire



Cumulative data from 21/02/2020 - 16/08/2020

Pillar 1 + 2

combined data from both Pillar 1 and Pillar 2 of the UK Government's COVID-19 testing programme

Pillar 1

data from swab testing in PHE labs and NHS hospitals for those with a clinical need, and health and care workers

Pillar 2

data from swab testing for the wider population, as set out in government guidance

COVID-19 cases | Cumulative data from 21/02/2020 - 16/08/2020 (total)

3256

CASES

1527

PILLAR 1 CASES

1729

PILLAR 2 CASES

COVID-19 cases | Cumulative data from 10/08/2020 - 16/08/2020 (latest week)

85

CASES

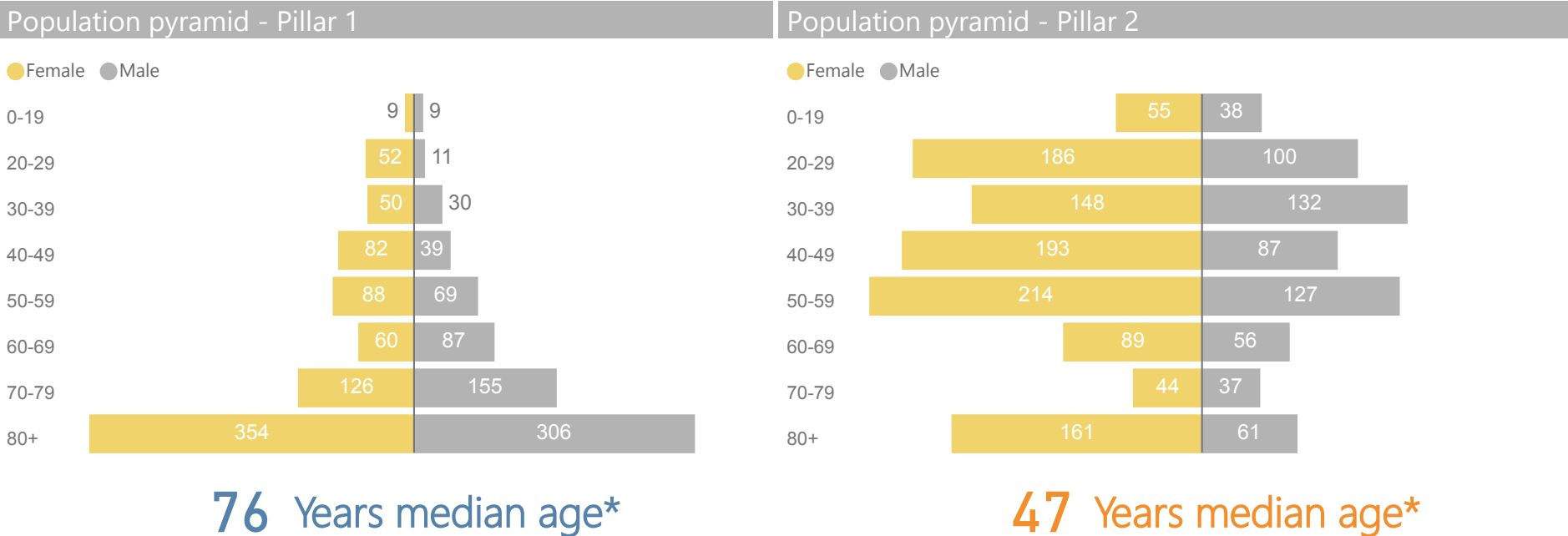
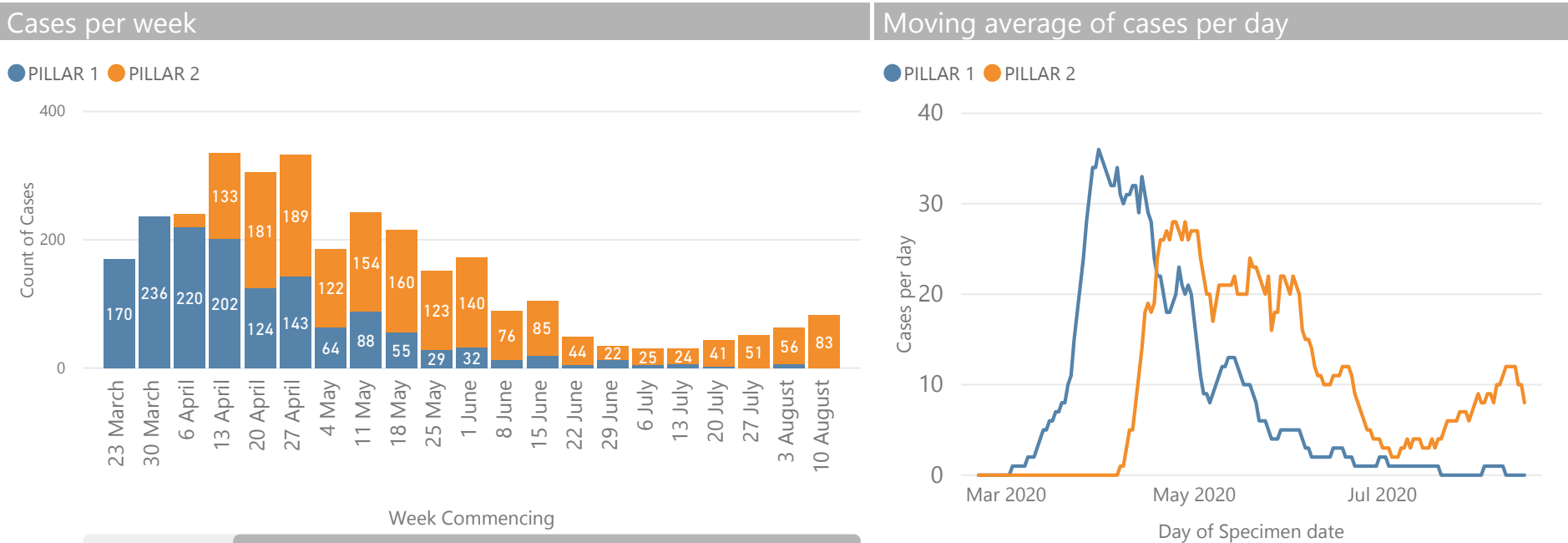
0**

PILLAR 1 CASES

83

PILLAR 2 CASES

** All counts of 1 or 2 have been suppressed



* median age is the middle when all ages are lined up smallest to largest - half of the cases are younger than this age and half are older

Weekly COVID-19 Surveillance Report in Nottinghamshire

Cumulative data from 21/02/2020 - 16/08/2020

Pillar 1 + 2

combined data from both Pillar 1 and Pillar 2 of the UK Government's COVID-19 testing programme

Pillar 1

data from swab testing in PHE labs and NHS hospitals for those with a clinical need, and health and care workers

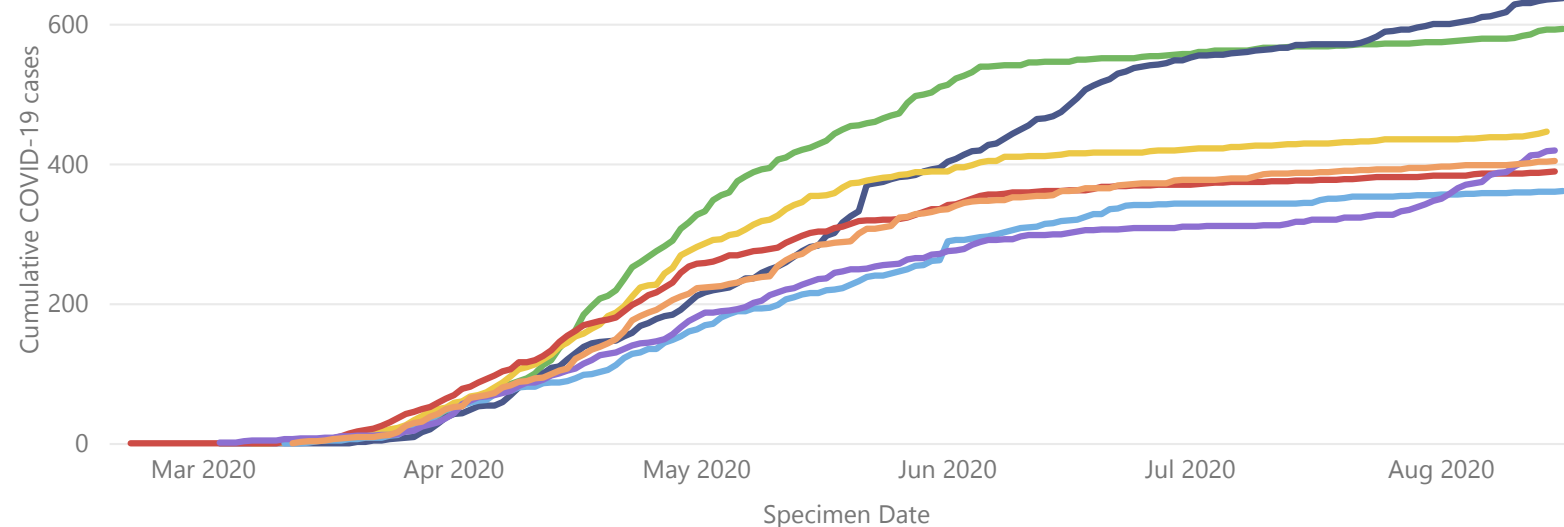
Pillar 2

data from swab testing for the wider population, as set out in government guidance

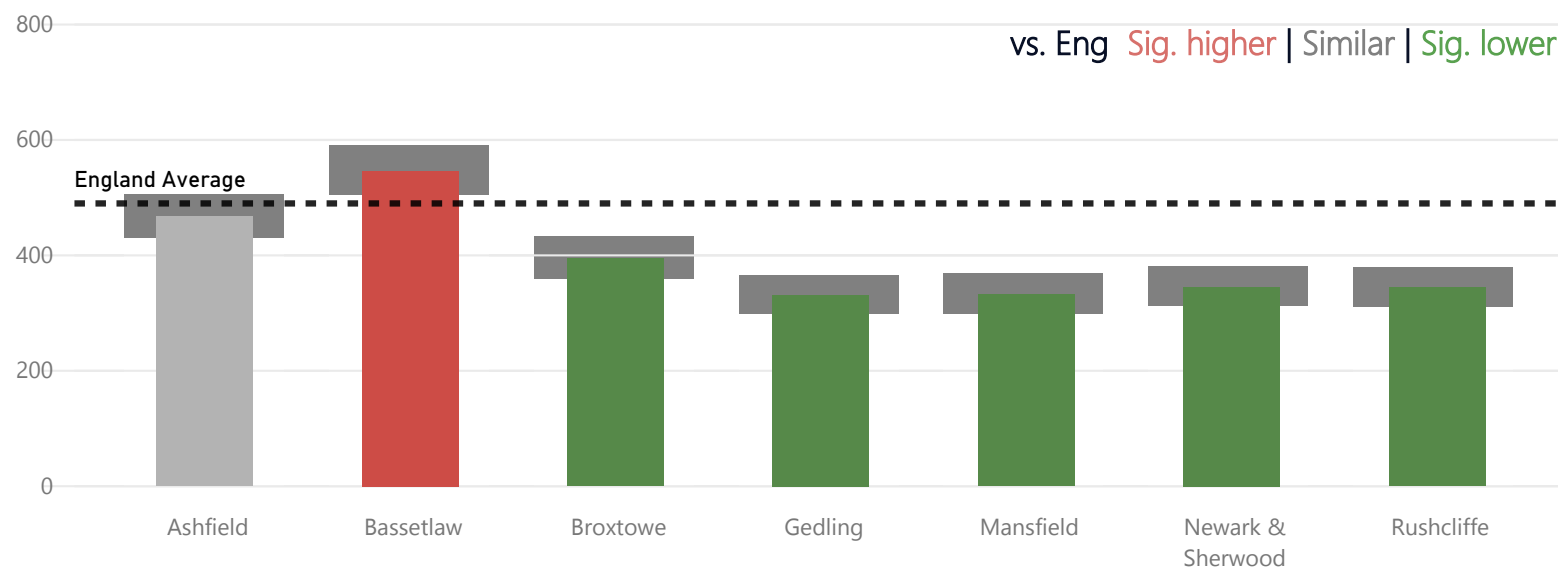
	Pillar 1 + 2 Cases	Pillar 1 Cases	Pillar 2 Cases
Ashfield	594	249	345
Bassetlaw	638	276	362
Broxtowe	447	244	203
Gedling	390	229	161
Mansfield	362	145	217
Newark & Sherwood	420	179	241
Rushcliffe	405	205	200

Cumulative cases per District

District ● Ashfield ● Bassetlaw ● Broxtowe ● Gedling ● Mansfield ● Newark & Sherwood ● Rushcliffe



Rate of cumulative cases per 100,000 population by district

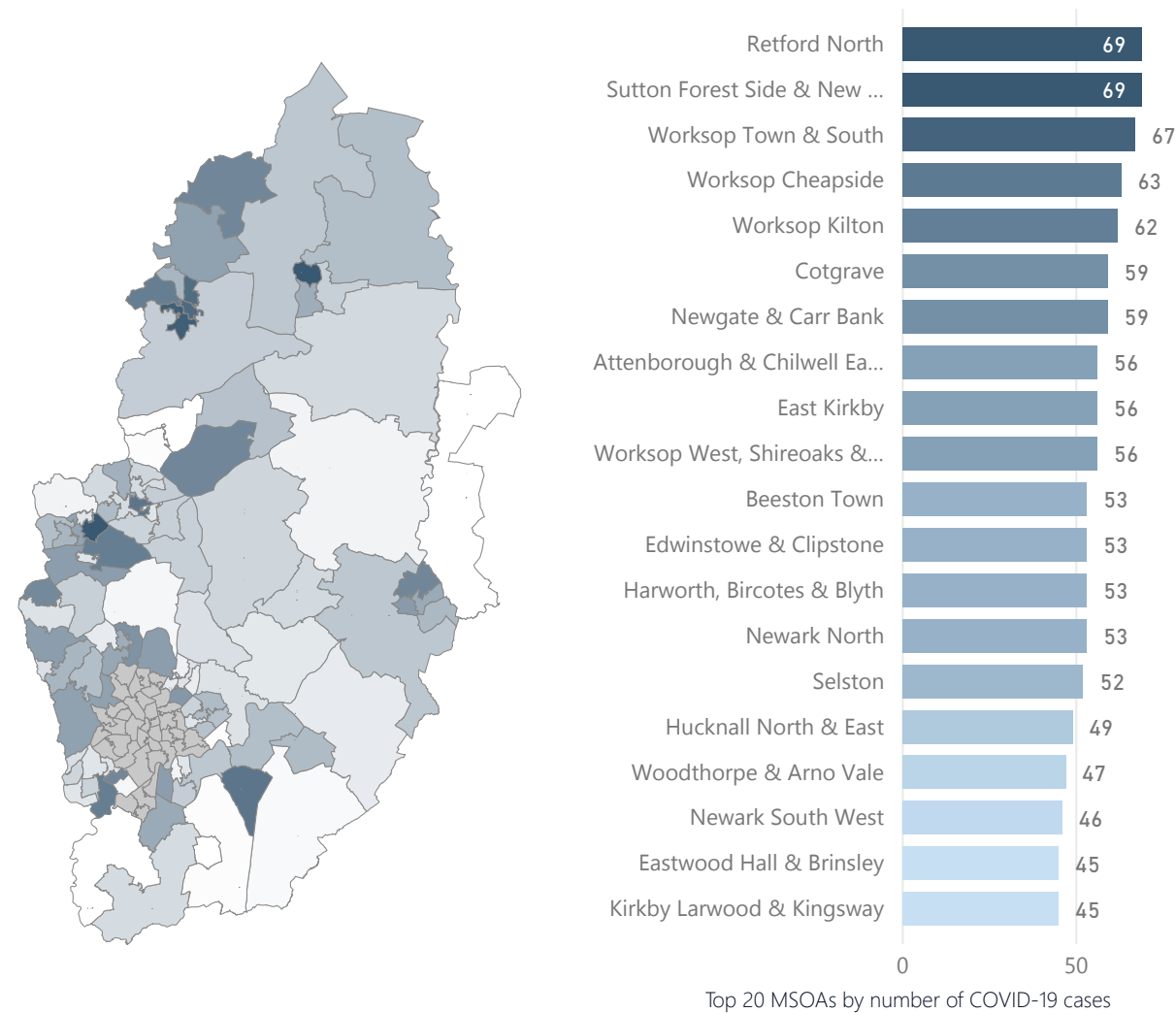


Weekly COVID-19 Surveillance Report in Nottinghamshire

Cumulative data from 21/02/2020 - 16/08/2020 | COVID-19 by MSOA | PILLARS 1 + 2

3256 CASES | 1527 PILLAR 1 CASES | 1729 PILLAR 2 CASES

Confirmed COVID-19 cases by MSOA



Confirmed COVID-19 rates per 100,000 population by MSOA

