

# County Life Spring 2021

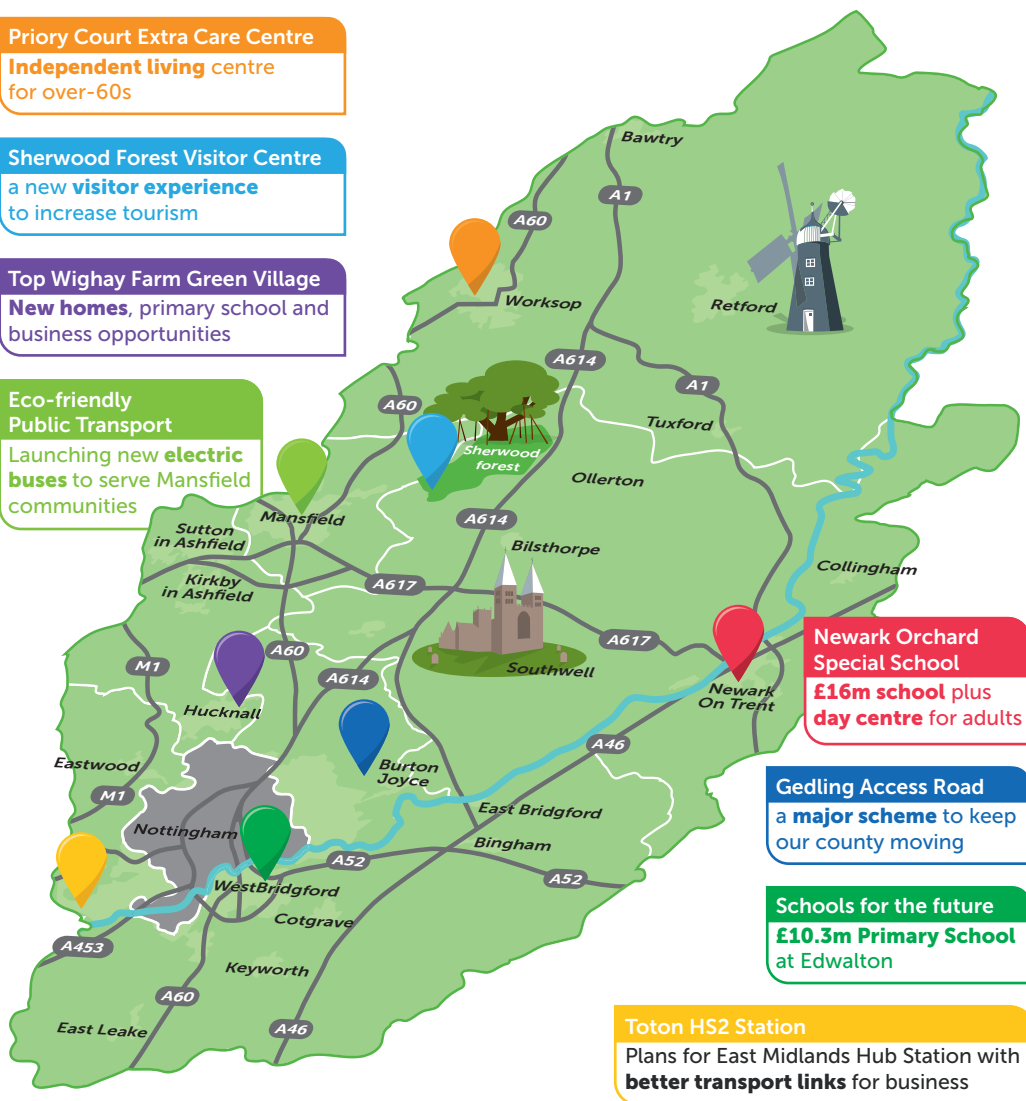
## Putting **Nottinghamshire** on the map

**Priory Court Extra Care Centre**  
**Independent living** centre  
for over-60s

**Sherwood Forest Visitor Centre**  
a new **visitor experience**  
to increase tourism

**Top Wighay Farm Green Village**  
**New homes**, primary school and  
business opportunities

**Eco-friendly  
Public Transport**  
Launching new **electric  
buses** to serve Mansfield  
communities



**Newark Orchard  
Special School**  
**£16m school** plus  
**day centre** for adults

**Gedling Access Road**  
a **major scheme** to keep  
our county moving

**Schools for the future**  
**£10.3m Primary School**  
at Edwalton

**Toton HS2 Station**  
Plans for East Midlands Hub Station with  
**better transport links** for business



**Nottinghamshire  
County Council**

# Welcome to County Life

We are living in extraordinary times. The pandemic has tested us all and I should like to extend my deepest sympathies to any of you who have suffered because of Covid-19, especially if you have lost a loved one.

Throughout this year of unprecedented challenges, the strength of Nottinghamshire's communities has come to the fore. There is no doubt your support for each other and collective determination to carry on, despite the difficulties, is helping to see us through.

When times are tough, it is important that the County Council responds. During the past year, the Council has maintained the vast majority of services, in a Covid secure way, offering the broadest possible range of support. Where we cannot offer our services in the normal way, we have adapted, particularly when it comes to supporting the most vulnerable, whether they are shielding, or in receipt of one of our care services. We have done this at the same time as moving the whole Council to a new model of remote and online working, to ensure we operate safely and in line with the Government's guidance. Of course, we cannot provide our personal services online so we have continued to offer these in a Covid safe way, using new types of working arrangements and Personal Protective Equipment (PPE). Whatever the service, we have tried our very best to find a way to continue, even if in a reduced way because of Covid restrictions.

In this edition of County Life, you will see some examples of what we have done to fight the pandemic – our Coronavirus Community Support Hub and our Coronavirus Community Fund, for example. Mostly though, you will see examples of how we are investing in our services and our economy, promoting independence, keeping people and communities safe from harm, and protecting our environment. Above all, this edition of County Life tells the story of how the County Council uses your money to provide a wide range of services, and to safeguard the future of our County.

We will need all of our combined will, expertise and commitment, as we embark on the road to recovery. In the meantime, the County Council will continue to provide our services and support to you and your community. We have learnt much from the past year and I am confident it will stand us in good stead for the future, as we recover and rebuild. Whatever the future holds, your County Council will be there for you.



**Kay Cutts**

Leader of Nottinghamshire  
County Council

**Keep following  
the Covid rules**



**HANDS**



**FACE**



**SPACE**

**Thank you**   
**Nottinghamshire  
for doing your bit**

# Your Award Winning Council



**2020 Association of Public Sector Excellence Street Lighting Innovation Award** for Via and the Council on an LED street lighting renewals project.



St Michael's Environmental Educational Centre was **the first centre to receive Ambassador Status from the Peak District National Park.**



Two honours at the prestigious **Royal Institute of Chartered Surveyors Awards** (East Midlands) and a further recognition at the **Local Authority Building Control East Midlands Awards** for Sherwood Forest Visitor Centre.



**British Youth Council presented its 'Champion's Award'** to the Council for its 'Make Your Mark' campaign.



**'Highly Commended' in the Civil Engineers East Midlands Merit Awards 2020** for Property Flood Resilience work in Southwell and Trent Bridge Junction Improvements.



**Won national award** for Council's **'Careers Local' project** to reduce the number of young people who are not in education, employment or training.



**2020 Times Educational Supplement** recognised Inspire as the best adult and community learning provider in the country.



Council's Customer Services received **'outstanding'** score in independent survey conducted by the **Institute of Customer Service.**



**Received the Defence Employer Recognition Scheme Gold Award** in recognition of our solid support and advocacy for the Armed Forces community.



Council accredited as a **Disability Confident Employer.**



**National award** for high use of **Mind of My Own app** by children and young people in Nottinghamshire.



**Council awarded ISO45001**, an international standard for Occupational Health and Safety management.



Ranked by the annual **Stonewall Workplace Equality Index** as a Top 100 Employer and awarded the Council the **'Highest Performing Public Sector Employer East Midlands Award'.**

# Your Council Tax

## Making your money go further



### What is Council Tax?

Local services provided by County and District Councils, plus the Police and Fire services, are all paid for by Council Tax and Government grants, and in some cases through charges for services. The amount you pay for Council Tax is based on the value of your property.

### The County Council charge

In the face of reducing Government funding and increasing demand for our services, the County Council has increased Council Tax by 1.99% and set an Adult Social Care Precept of 1% (£3.9m) in 2021/22, raising a total of £14.4m in additional money to support local public services. The majority of households

will pay 62p extra per week to continue to receive around 400 services.

Over the past three years the County Council has achieved savings worth £35.3m. But, with increasing demand for adult and children's social care services, the County Council is still facing a £47.7m budget shortfall by 2024/25.

### The cost of providing local public services in 2021/22

↑ Council Tax  
1.99%

↑ Adult Social Care Precept 1%

=

62p

weekly increase for most county households

Provides

£14.4m

extra money to support local public services

### Savings delivered but demand for services is rising



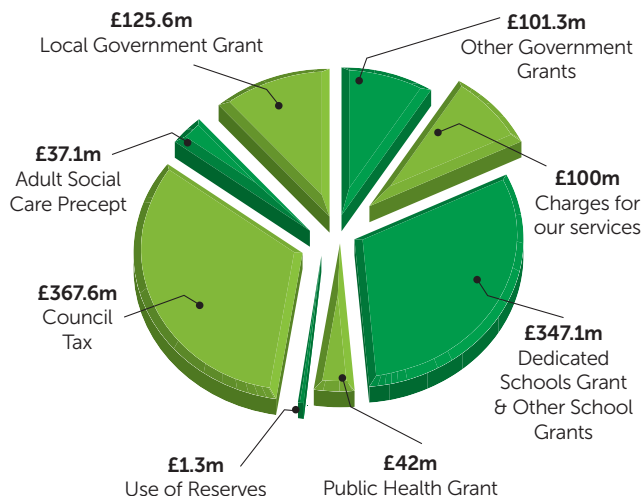
in savings achieved over the past three years

But



the demand continues to rise for social care services, inflation and other costs

## Where the Council's budget comes from

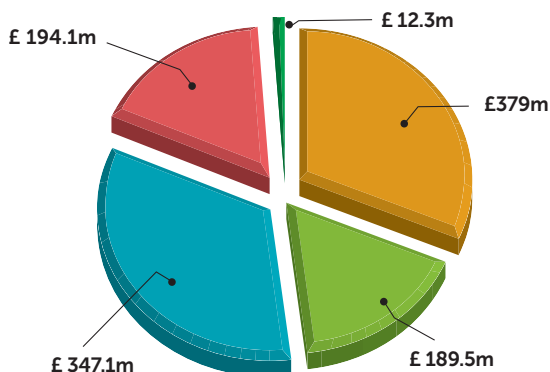


### Your Council Tax payment 2021/22

<b>Band A</b>	£954.14
<b>Band B</b>	£1,113.16
<b>Band C</b>	£1,272.19
<b>Band D</b>	£1,431.21
<b>Band E</b>	£1,749.26
<b>Band F</b>	£2,067.30
<b>Band G</b>	£2,385.35
<b>Band H</b>	£2,862.42

The actual amount you pay will depend on your individual circumstances (whether you receive single person discount, student or disability exemptions etc) and additional amounts for your District Council, Fire and Police.

## How the Council's budget is spent



In addition to the increase in Council Tax, the County Council has also approved an additional Government precept solely for adult social care of 1%, the impact of this is:

### Adult Social Care Precept

<b>Band A</b>	£99.76
<b>Band B</b>	£116.39
<b>Band C</b>	£133.01
<b>Band D</b>	£149.64
<b>Band E</b>	£182.89
<b>Band F</b>	£216.15
<b>Band G</b>	£249.40
<b>Band H</b>	£299.28

Schools	£347.1m (31%)
Children & Young People	£189.5m (17%)
Adult Social Care & Public Health	£379.0m (34%)
Community & Place	£194.1m (17%)
Running the Council	£12.3m (1%)



Newark Orchard School

## Investing in our children and young people

- 87% of schools currently rated Good or Outstanding by Ofsted – above average nationally and for the East Midlands.
- Completed a £10.3m new Rosecliffe Spencer Academy primary school in Edwalton offering 315 school places and 39 nursery places.
- Opened new £12m Newark Orchard Special Educational Needs (SEN) School in September 2020, with 140 places.
- Completed the brand new £4.3m Hucknall Flying High Academy.
- Delivered the £6.3m new school building for Hawthorne Primary School in Bestwood Village.
- On track to deliver a new £7m primary school for Bingham scheduled to open September 2022, providing 210 places plus 26 nursery places.
- A further school due to open in September 2022 is Rivendell Flying High Academy (near Netherfield) with 210 new primary school places.
- Feasibility study for new secondary school in West Bridgford to be completed by Spring 2021 delivering up to 800 places.
- In 2020-21, over 90% of children applying for a school place got their first preference school.
- Provided funding for 27,128 children for childcare and early education, to improve children's development and support parents and carers to work.
- Youth service delivering over 3,100 positive activities to young people during the pandemic.
- Funding for two Enterprise Coordinators working with schools to help young people with their career aspirations.



**900** children  
provided with  
social care support like  
foster carers, to help them live

**happy, safe lives**





Newark Day Centre

## Promoting independence - Adult Social Care and Health

- £2.96m Priory Court Extra Care Centre built in Worksop to help older people live independently.
- £4.2m Newark Day Service opened in August 2020 to provide care and support for 90 people.
- On target to recruit 100 Shared Lives Carers over the next five years, who will provide support to people in their homes so they can continue to live as independently as possible in the community.
- Supporting 111 more adults with a learning disability into employment by 2025.
- 36 more adults with a mental health condition on a care plan approach supported into employment.
- Leading and coordinating the Covid-19 response across the county by managing outbreaks and working with partners to provide testing to our communities and support the vaccination roll out.
- Investing in additional support for residents as a result of the impact of Covid-19, in areas such as mental health and wellbeing and domestic abuse emergency refuge accommodation.
- Commissioned a new Integrated Wellbeing Service, Your Health Your Way, which brings together support for quitting smoking, weight management, physical activity and alcohol reduction.



*New Gedling Access Road*

## Investing in Nottinghamshire's future

- The 3.8km Gedling Access Road (GAR) is on track for completion in Autumn 2021 which will increase woodland in the area by 40%, in addition to creating 1,000 new homes and over 200 new jobs.
- Business case submitted to the Department for Transport (DfT) to accelerate the A614/A6097 corridor upgrades; the well-received proposals have been viewed 10,000 times through a virtual consultation.
- Ambitious plans to create a new green community at the site of Top Wighay Farm which will provide 800 new homes, a primary school and other local amenities; whilst creating more than 1,000 new full-time jobs and boosting the local economy by more than £873m over a decade.
- Creating a new community in Mansfield on land part-owned by the County Council through the £250m Lindhurst Development, bringing 1,700 new homes, a new school, commercial space and generating up to 4,000 jobs.
- Supporting the £4m Warm Homes Fund to improve 1,500 homes by May 2022, administered by Affordable Warmth Solutions.
- Development of 130 affordable homes planned on site of former depot at Rolleston Drive in Arnold.



**40% increase**  
in local woodland  
as part of the new  
Gedling Access Road



**2,500**  
new homes  
planned as part of developments  
at Top Wighay and Lindhurst





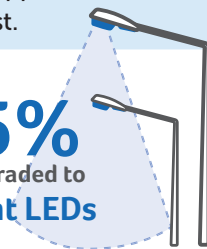
*Protecting communities from flooding*

## Protecting **our environment**

- Committed to Carbon neutrality in all the Council's activities by 2030, or as soon as possible thereafter.
- Protecting communities from flooding by investing in an £8.3m countywide flood risk management programme.
- Upgrading over 75% of streetlights in the county to energy efficient LEDs.
- Recycling 9,500 tonnes of waste from resurfacing schemes each year.
- A Nottinghamshire road was the first in the country to trial a revolutionary new sustainable asphalt made from recycled waste tyres.
- Launching four new electric buses this autumn to serve Rushcliffe and Mansfield, following the previous successful launch of the county's first-ever electric buses in Stapleford, Toton, Attenborough and Beeston.
- Proposed new Recycling Centre for Cotgrave in Rushcliffe which would take the total number of centres across the county to 13.
- Committed to installing additional electric vehicle charging points across the county.
- Reviewing the Council's buildings to ensure they are best placed to serve local communities and towns across the county.
- Working with partners to plant 22,500 trees in 2021 as part of the Trees for Climate project.
- Continuing to plant new trees alongside the county's roadsides, with a further 150 to be planted this year.
- Promoting growth of wildflowers in verges with support from The Wildlife Trust.



**Over 75%**  
of streetlights upgraded to  
**energy efficient LEDs**





Artists impression of new Toton station

## Creating a **strong and vibrant economy**

- Major partner in new development company to secure Government and private investment for jobs, skills and supply chain opportunities.
- Plans for a new green village and innovation district in Toton, with the planned HS2 Hub Station set to boost transport links.
- Supporting a bid for an inland Freeport at East Midlands Airport to provide lower-cost routes for exporters.
- Major partner in Midlands Engine and Midlands Connect, promoting road, rail, transport and innovation to the Midlands.
- 98% of all Nottinghamshire homes and business premises can access superfast broadband speeds.
- The Better Broadband for Nottinghamshire project putting our county in the top three best digitally connected counties in the UK.
- A further £750,000 investment is helping boost rural connectivity.
- World's first 5G Connected Forest coming to Sherwood Forest, the home of Robin Hood.
- £10m project will include a unique 3D experience at Sherwood Forest, using virtual reality to bring the Robin Hood story to life.
- Creating space in our buildings for small and medium enterprises to grow.
- Worked with Futures to provide 430 apprenticeships and improve training and employment opportunities across our communities.

**£10 million 5G**

**Connected Forest**

set to boost business, innovation, digital skills and tourism

**3rd best** **digitally connected** **county** in the country



# MYNOTTS app

- In the last year nearly 10,000 residents have downloaded the free MyNotts app to access Council services whilst on the move.
- Over a quarter of these actively use it on a regular basis to access information or use its added functionality to report potholes and other highway faults.
- Download the app by visiting the app store on Android or Apple devices.



# Supporting local communities

- The £1m Covid Community Fund has helped more than 300 local groups with funding of over £800,000 to support communities through the pandemic.
- Nottinghamshire Coronavirus Community Support Hub has supported 1,388 requests from residents during the pandemic, with 761 volunteer groups providing a range of services including shopping, dog walking and befriending.
- In 2020/21 the Council match funded 97 Local Improvement Schemes including overall investment at almost £700,000.



**300** local groups   
provided with **funding** to support  
them through the pandemic 

## Foster for Nottinghamshire

**We're proud of our 322 foster carers across Nottinghamshire, but we still need more**


**Could you offer roots of stability to a child in need?**



Find out more and see upcoming fostering information events on our website and Facebook page:

 [nottinghamshire.gov.uk/fostertoday](https://nottinghamshire.gov.uk/fostertoday)

 [/FosterNotts](https://www.facebook.com/FosterNotts)

 0115 804 4440



giving local children **roots** 