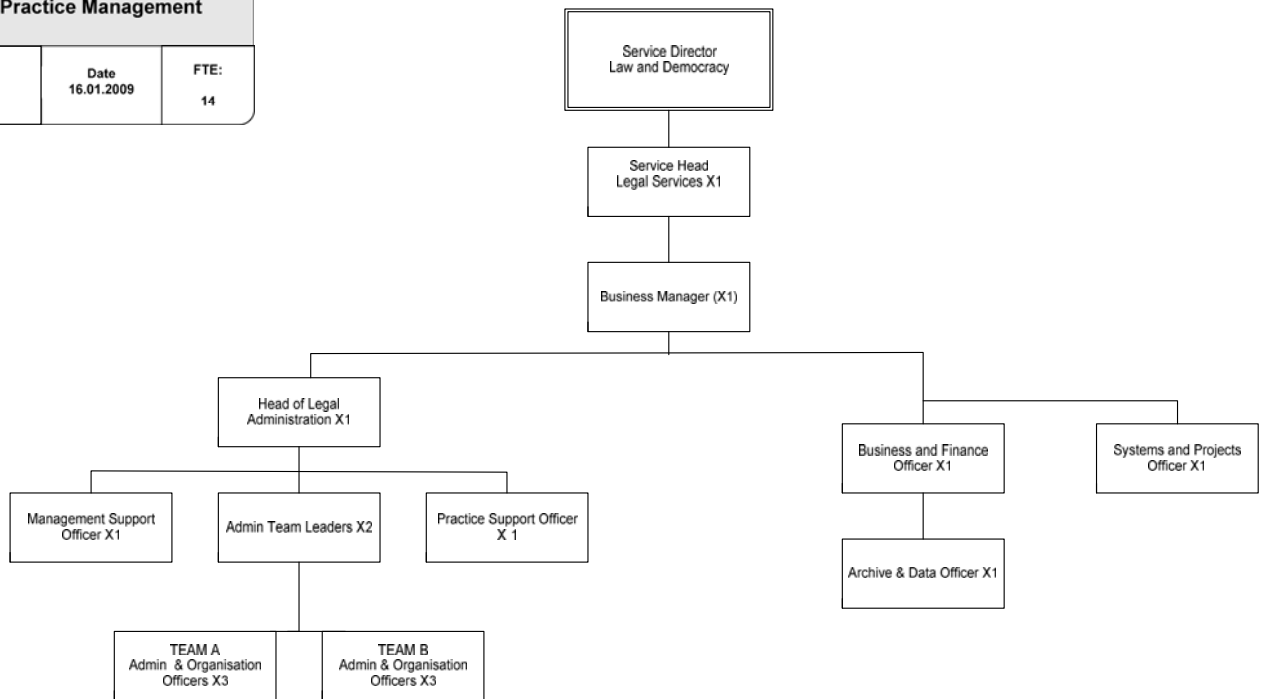


Practice Management

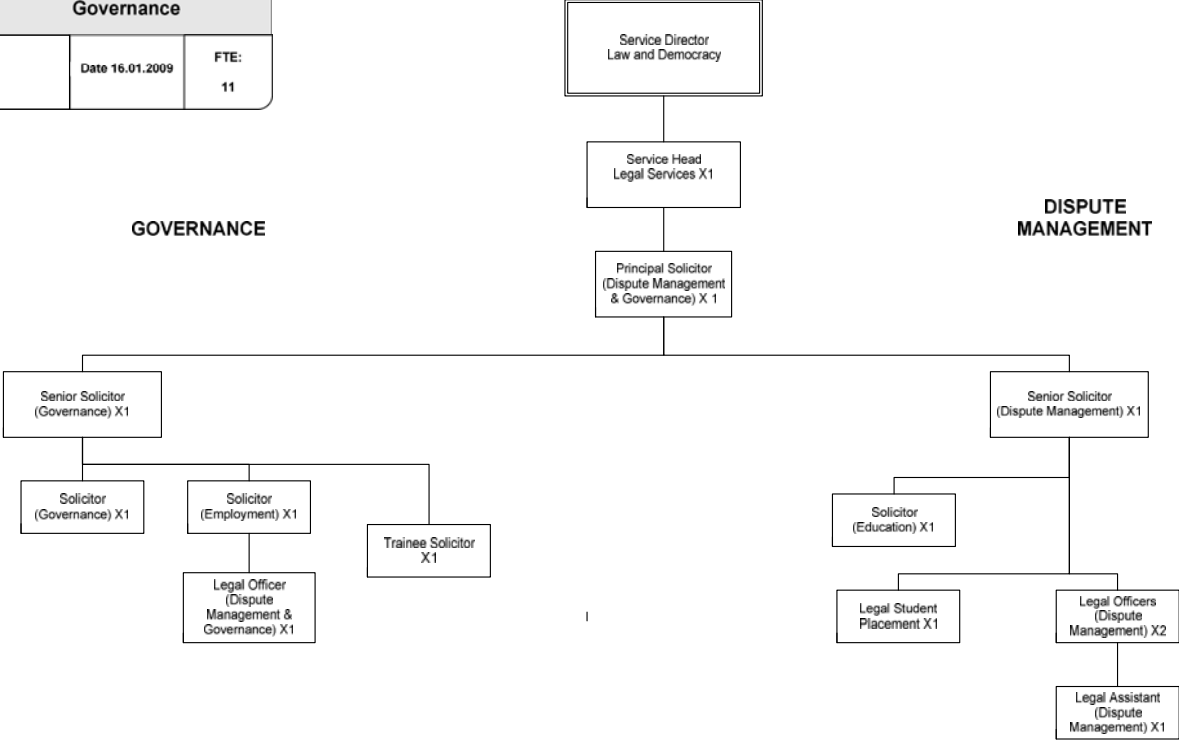
Date	FTE:
16.01.2009	14



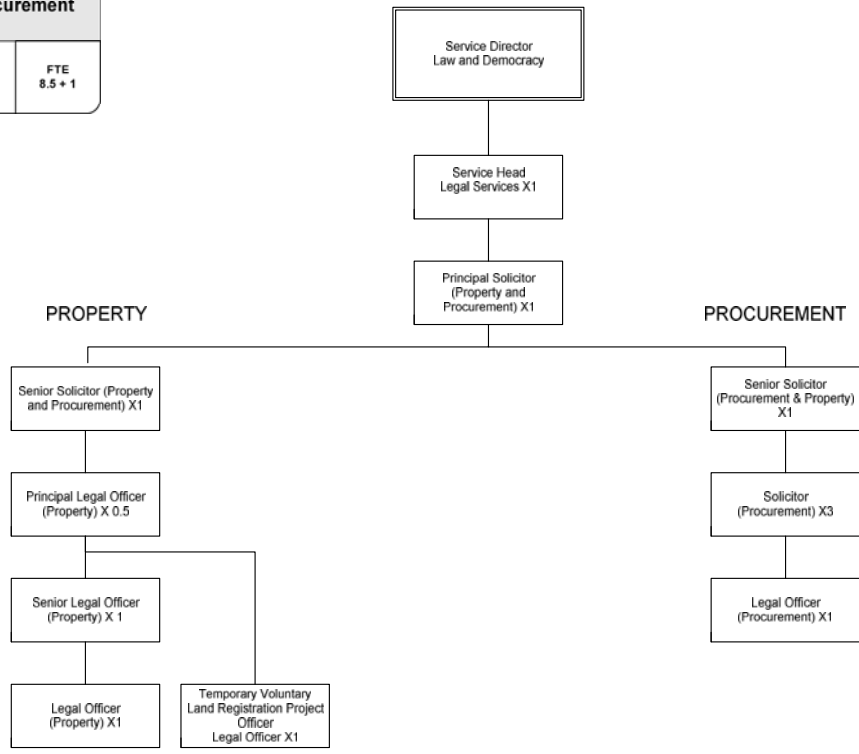
Dispute Management and Governance		
	Date 16.01.2009	FTE: 11

GOVERNANCE

DISPUTE MANAGEMENT



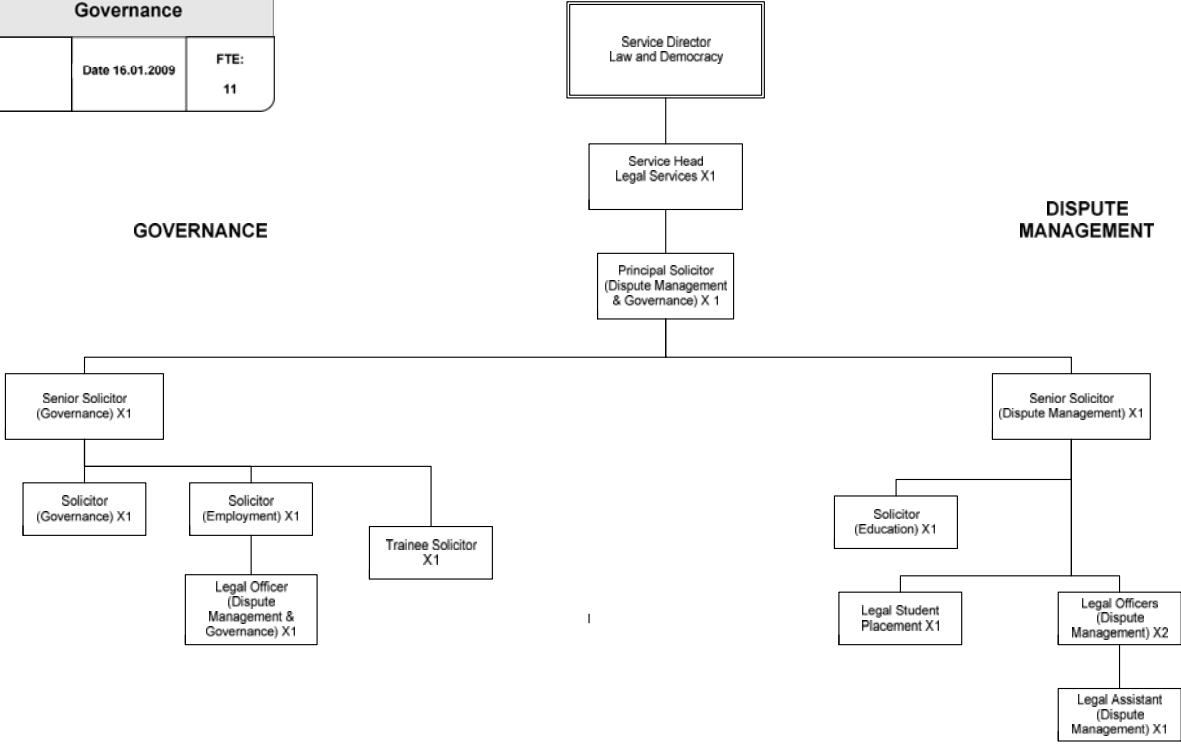
Property and Procurement		
	Date 16.01.2009	FTE 8.5 + 1



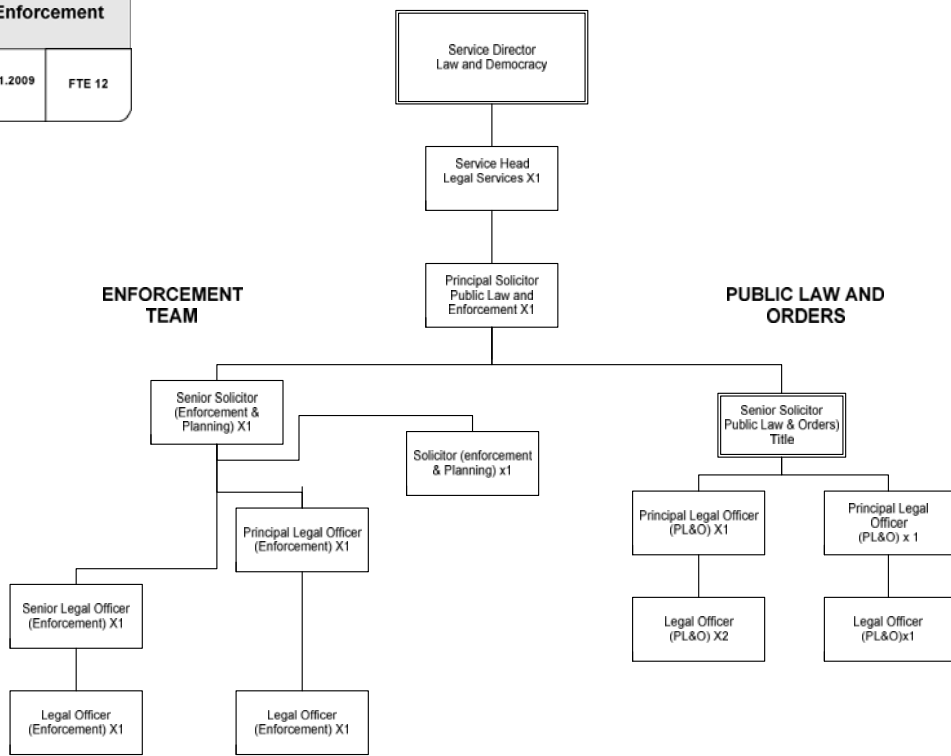
Dispute Management and Governance		
	Date 16.01.2009	FTE: 11

GOVERNANCE

DISPUTE MANAGEMENT



Public Law & Enforcement		
	Date 16.01.2009	FTE 12



LEGAL SERVICES Law and Democracy Chief Executive's Department		
Total FTE 63.5 +3	Date 16.07.2009	6 FTE Management Team + 1 PA

