

Holme and North Muskham Footpath 3



TEMPORARY PATH CLOSURE

 Path to be closed

Scale : 1:10000

Produced by: mm403





Date: 26/02/2020



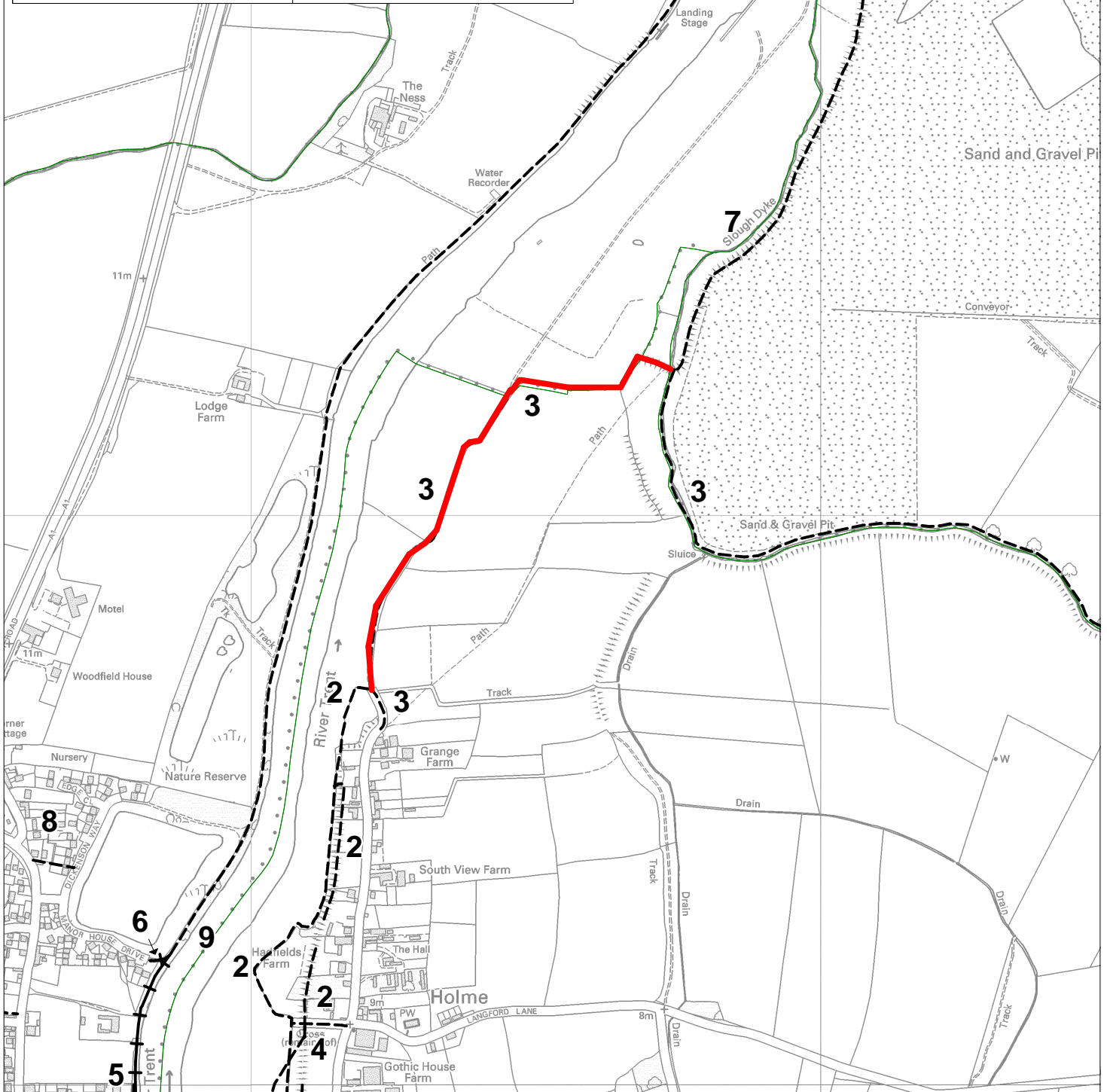
NOT DEFINITIVE

Queries about path alignment should be made to the Definitive Map Team on 0115 9773708.

Public Rights of Way:

-  Footpath
-  Bridleway
-  Byway Open to All Traffic
-  Restricted Byway

This map is reproduced from Ordnance Survey materials with the permission of Ordnance Survey on behalf of the Controller of Her Majesty's Stationery Office. Crown copyrights. Unauthorised reproduction infringes Crown Copyright and may lead to prosecution or civil proceedings. (Nottinghamshire County Council) (100019713), 2015



Footpath has been flooded, hedges and fencing have been swept away, quarry extraction area is adjacent making footpath dangerous to use

