

Rampton Footpath No.7



Nottinghamshire
County Council

TEMPORARY PATH CLOSURE

 **Footpath Closed**

Scale

Produced by: mm403





Date: 18/10/2019



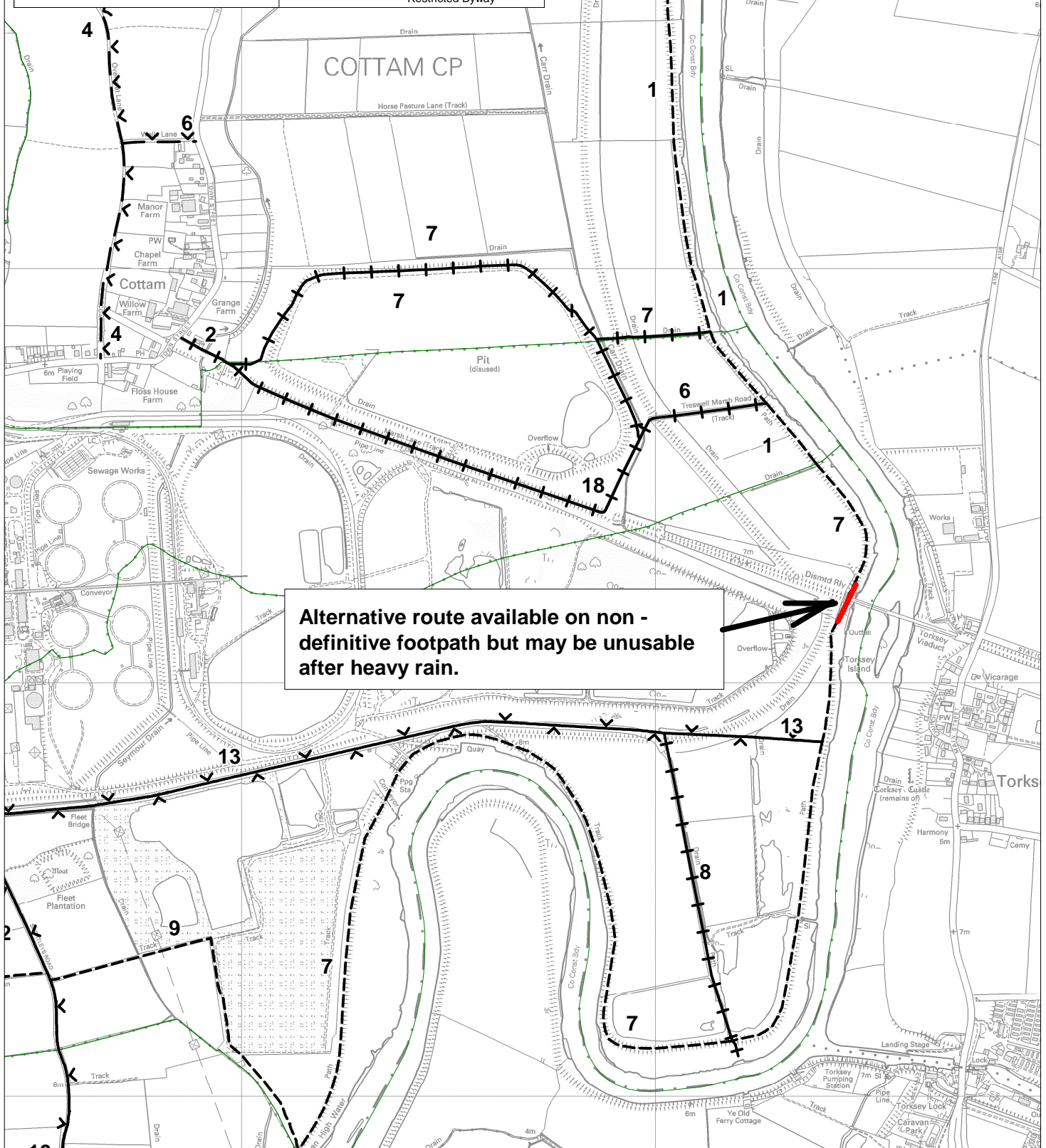
NOT DEFINITIVE

Queries about path alignment should be made to the Definitive Map Team on 0115 9773708.

Public Rights of Way:

-  Footpath
-  Bridleway
-  Byway Open to All Traffic
-  Restricted Byway

This map is reproduced from Ordnance Survey materials with the permission of Ordnance Survey on behalf of the Controller of Her Majesty's Stationery Office. Crown copyrights. Unauthorised reproduction infringes Crown Copyright and may lead to prosecution or civil proceedings. (Nottinghamshire County Council) (100019713), 2015



**Alternative route available on non -
definitive footpath but may be unusable
after heavy rain.**