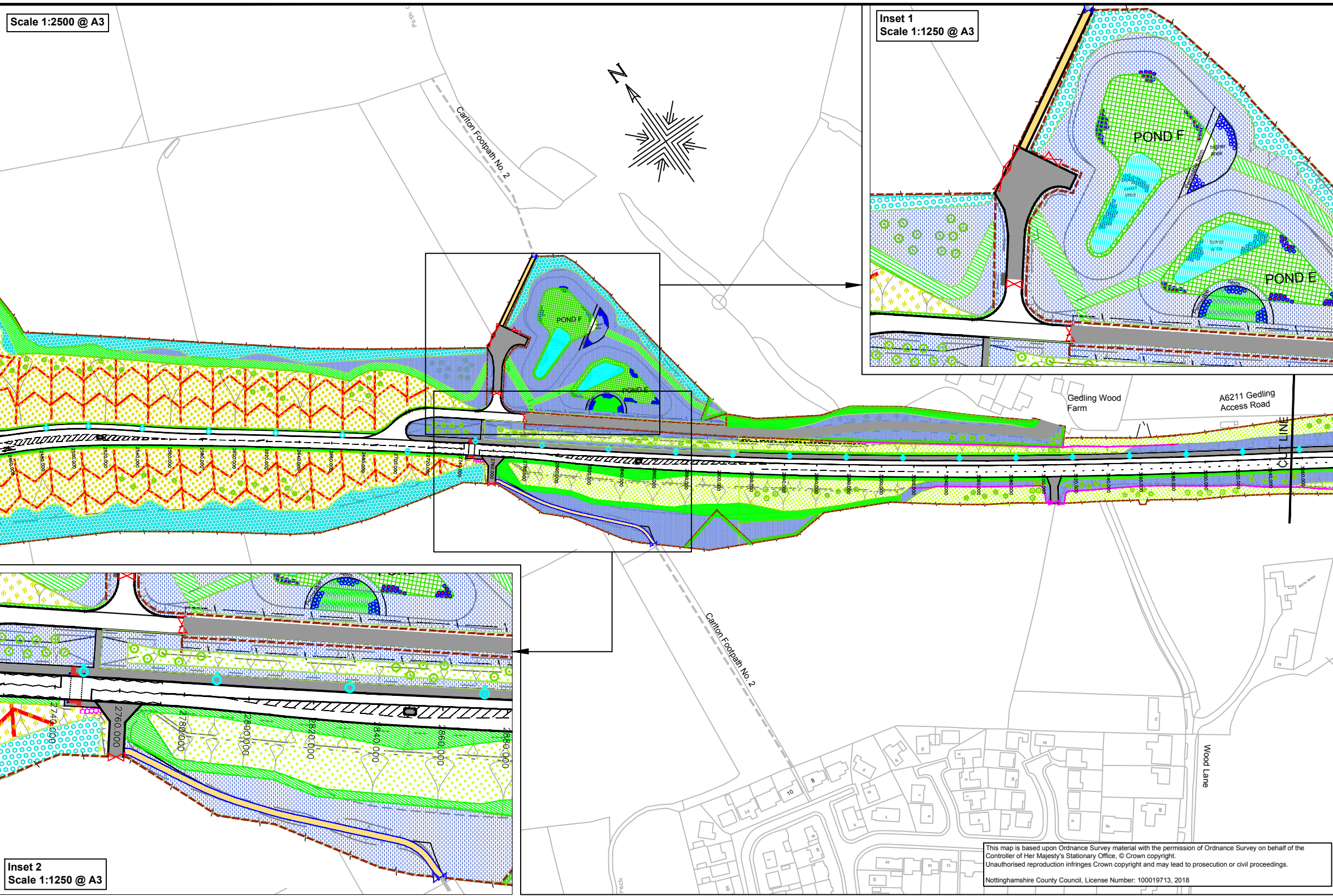


Scale 1:2500 @ A3

Inset 1
Scale 1:1250 @ A3



Key

	Woodland to be retained		Vehicle Road Restraint System
	Extra heavy standard tree		Acoustic Fence
	Feathered trees		Mesh fencing to school boundary
	Woodland planting mix		Close boarded fence
	Woodland edge planting mix		Retaining walls, parapets and the like
	Wet woodland planting mix		10m high tubular steel lighting column with LED lantern
	Hedgerow planting		8m high tubular steel lighting column with LED lantern
	Highway verge grass mix		6m high tubular steel lighting column with LED lantern
	Species rich grass mix		Existing 10m high column to have lantern replaced with new LED lantern
	Wet grassland mix		Traffic signal pole
	Bespoke seed mix (Species rich grass mix)		Kerbs Edgings
	Open mosaic habitat (Species rich grass mix)		Tactile paving (only shown at controlled crossings)
	Post and Rail Fencing		Footway, private means of access and the like
	Vehicular Gate		Pedestrian Guardrail
	Pedestrian Gate		Maintenance area
			Herringbone Counterfort Drainage

Notes
 This drawing illustrates the key features of the Gedling Access Road (GAR) and is not exhaustive in detail. It does not show details of:

- Statutory undertakers apparatus, existing or diverted
- Any site clearance works or demolition
- Fencing type details, heights, associated ecological mitigation measures, foundations and the like
- Type of vehicle restraint systems or performance specification
- Any underground drainage systems, road gullies, combined kerb drainage, ditch lining and the like
- Any earthworks
- Pavement materials, construction depths, high friction surfacing and the like
- Type of kerbs and edgings, tactile paving at uncontrolled crossings, materials, construction depths and the like
- Any road traffic signs
- Some road markings omitted for clarity;
- Traffic signal pole types, traffic signal heads, display units, demand units, controllers, supply pillars, ducting and associated drawoffs and cabling, detection systems, CCTV systems, communication systems, foundations and the like
- Street light column materials, lantern specifications, driver units, foundations, feeder pillars, ducting and associated drawoffs and cabling and the like
- Details of any structures such as reinforced concrete retaining walls, parapets, gabion walling, or proprietary systems
- Details of any special structures such as reinforced earth retaining walls and the performance specification for acoustic fencing
- Any miscellaneous or accommodation works

Existing features, where shown, are to provide clarity. Note OS base features removed where the GAR intersects mapping features for clarity. No waiting (double yellow lines) where shown are subject to a Traffic Regulation Order including a public consultation. Details may be subject to change.

Rev	Status	Description	Drawn	Chkd	Auth	Date

Project
Gedling Access Road

Status
Project No.
HW00590

Title
**Side Roads Order
Detailed Engineering Drawing
Plan 5 of 6**

Scale	As shown	Drawn A. Lakin	Date 14/11/18
		Chkd MB	Date 16/11/18
		Auth MB	Traced

Drawing No.
HW00590/215

in partnership with

www.viam.co.uk | Tel 0115 804 2100
 Bilsthorpe Depot, Bilsthorpe Business Park,
 Bilsthorpe, Nottinghamshire NG22 8ST

Inset 2
Scale 1:1250 @ A3

This map is based upon Ordnance Survey material with the permission of Ordnance Survey on behalf of the Controller of Her Majesty's Stationary Office, © Crown copyright. Unauthorised reproduction infringes Crown copyright and may lead to prosecution or civil proceedings. Nottinghamshire County Council. License Number: 100019713, 2018

Long Section
 Proposed levels are finished carriageway centre line levels
 Horizontal and Vertical Scale: 1:2500 @ A3

