



Asbestos Inspection Report

Register Update

01038 : Bracken Lane Primary and Nursery



Nottinghamshire County Council

Survey date : 17-Jul-2017

Re-inspection Due on : 17-Jul-2018

Printed on 26/07/2017

Asbestos Inspection Report

Bracken Lane Primary and Nursery

Bracken Lane

Retford

Nottingham

Nottinghamshire

DN22 7EU

Type of survey **Management Survey**

Surveyor **C.J.A.Marriott**

Survey date **17-Jul-2017**

Buildings on site

The following table displays details of each of the blocks on site and the construction details. The block reference should be used in conjunction with the survey details to locate elements on site

Reference	Block	Area (m2)	Construction	Const. Year
0100	Main School	1,021	CLASP Mark 5	1975
0200	Garage Store	12	Conc.Frame-Trad	1995
5000	Catering Services	63	CLASP Mark 5	1975

ASBESTOS SUMMARY

The following buildings contain asbestos materials on which works can normally only be carried out by licensed contractors following notification to the HSE:

0100	Main School
5000	Catering Services

The following buildings contain asbestos cement and other products on which a licence is not required to carry out work but a safe system of work must still be followed:

0100	Main School
5000	Catering Services

Asbestos has not been detected in the following buildings:

0200	Garage Store
------	--------------

Asbestos Register Detail

Site 01038 : Bracken Lane Primary and Nursery



Reference	96	Sample number	01038-01-50-30
Survey date	17-Jul-17	Presumed	No
Building :	01 00 Main School		
Floor		Room	050 External Store
Location			
Quantity sampled	10 SQ M	Use	Flooring

Material assessment

Product type	Asb-Reinfd comps,etc (see Use) (1)
Damage/deterioration	Low damage (1)
Surface treatment	Composite materials (0)
Asbestos type	Chrysotile (1)

Priority assessment

Type of activity	Low disturbance activiy (1)
Location	Rooms up to 100m2 (2)
Accessibility	Occasionally disturbed (1)
Extent	<10m2 or 10m pipe run (1)

Occupants using space	1 to 3 (1)	Material score	3
Frequency of use	Daily (3)	Priority score	4
Average time of use	<1 hour (0)	Banding	Removed
Type of maintenance	Minor disturbance (0)		
Frequency of maintenance	ACM unlikely to be disturbed (0)		



Reference	97	Sample number	01038-01-49-P01
Survey date	17-Jul-17	Presumed	Yes
Building :	01 00 Main School		
Floor		Room	049 Nursery
Location	WALL MOUNTED		
Quantity sampled	0.5M2	Use	Asbestos Insulating Board

Material assessment

Product type	AIB,Textiles,Rope,etc(see Use) (2)
Damage/deterioration	Good condition (0)
Surface treatment	Unsealed AIB,enc Lagging&Spray (2)
Asbestos type	Crocidolite (3)

Priority assessment

Type of activity	Low disturbance activiy (1)
Location	Rooms up to 100m2 (2)
Accessibility	Occasionally disturbed (1)
Extent	Small amounts or items (0)

Occupants using space	1 to 3 (1)	Material score	7
Frequency of use	Daily (3)	Priority score	5
Average time of use	>1 to <3 hours (1)	Banding	Removed
Type of maintenance	Low disturbance (1)		
Frequency of maintenance	<1 per year (1)		

No access. Presumed to contain Insulation board and gaskets.
Presumed crocidolite asbestos.

Asbestos Register Detail

Site 01038 : Bracken Lane Primary and Nursery



Reference	98	Sample number	01038-01-48-P01
Survey date	17-Jul-17	Presumed	Yes
Building :	01 00 Main School		
Floor		Room	048 Staff WC
Location	WALL MOUNTED		
Quantity sampled	1 NO	Use	Asbestos Insulating Board

Material assessment

Product type	AIB, Textiles, Rope, etc (see Use) (2)
Damage/deterioration	Low damage (1)
Surface treatment	Unsealed AIB, enc Lagging & Spray (2)
Asbestos type	Crocidolite (3)

Priority assessment

Type of activity	Low disturbance activity (1)
Location	Rooms up to 100m2 (2)
Accessibility	Occasionally disturbed (1)
Extent	Small amounts or items (0)

Occupants using space 1 to 3 (1)

Frequency of use Daily (3)

Average time of use >1 to <3 hours (1)

Type of maintenance Low disturbance (1)

Frequency of maintenance <1 per year (1)

Material score 8

Priority score 5

Banding **Removed**

Presumed crocidolite asbestos. No access. Presumed to contain Insulation board and gaskets



Reference	99	Sample number	01038-01-46-27
Survey date	17-Jul-17	Presumed	No
Building :	01 00 Main School		
Floor		Room	046 Boiler Room
Location	CEILING AND CLADDING TO PIPES		
Quantity sampled	15 M2	Use	Asbestos Insulating Board

Material assessment

Product type	AIB, Textiles, Rope, etc (see Use) (2)
Damage/deterioration	Low damage (1)
Surface treatment	Enc Lagging & Sprays, AIB, etc (1)
Asbestos type	Amphibole ex. Crocidolite (2)

Priority assessment

Type of activity	Rare disturbance activity (0)
Location	Rooms up to 100m2 (2)
Accessibility	Occasionally disturbed (1)
Extent	>10m2 to <50m2 or >10m to <50m (2)

Occupants using space 1 to 3 (1)

Frequency of use Weekly (2)

Average time of use <1 hour (0)

Type of maintenance Minor disturbance (0)

Frequency of maintenance <1 per year (1)

Material score 6

Priority score 4

Banding **Low**

Monitor & Manage

Amosite asbestos

Asbestos Register Detail

Site 01038 : Bracken Lane Primary and Nursery



Reference	100	Sample number	01038-01-46-28
Survey date	17-Jul-17	Presumed	No
Building :	01 00 Main School		
Floor		Room	046 Boiler Room
Location	OLD WHITE PIPE LAGGING		
Quantity sampled	20 M2	Use	Asbestos Insulating Board
Material assessment			
Product type	Therm-Ins,Spray,etc (see Use) (3)		
Damage/deterioration	Low damage (1)		
Surface treatment	Enc Lagging&Sprays,AIB,etc (1)		
Asbestos type	Not asbestos (0)		

No Asbestos Detected

Material score

Banding



Reference	101	Sample number	01038-01-46-P01
Survey date	17-Jul-17	Presumed	Yes
Building :	01 00 Main School		
Floor		Room	046 Boiler Room
Location	WALL MOUNTED		
Quantity sampled	1 NO	Use	Asbestos Insulating Board
Material assessment			
Product type	AIB,Textiles,Rope,etc(see Use) (2)		
Damage/deterioration	Low damage (1)		
Surface treatment	Unsealed lagging&sprays (3)		
Asbestos type	Crocidolite (3)		

Priority assessment	
Type of activity	Low disturbance activity (1)
Location	Rooms up to 100m2 (2)
Accessibility	Occasionally disturbed (1)
Extent	Small amounts or items (0)

Occupants using space	1 to 3 (1)
Frequency of use	Weekly (2)
Average time of use	<1 hour (0)
Type of maintenance	Minor disturbance (0)
Frequency of maintenance	ACM unlikely to be disturbed (0)

Material score	9
Priority score	3
Banding	Removed

Presumed crocidolite asbestos. Presumed to contain insulation board, rope seals and flash pads.

Asbestos Register Detail

Site 01038 : Bracken Lane Primary and Nursery



Reference	102	Sample number	01038-01-46-29
Survey date	17-Jul-17	Presumed	No
Building :	01 00 Main School		
Floor		Room	046 Boiler Room
Location	FLOOR BEHIND BOILERS		
Quantity sampled	2 M2	Use	Debris
Material assessment			
Product type	AIB, Textiles, Rope, etc(see Use) (2)		
Damage/deterioration	High damage (3)		
Surface treatment	Unsealed lagging&sprays (3)		
Asbestos type	Not asbestos (0)		

No Asbestos Detected

Material score

Banding



Reference	103	Sample number	01038-01-45-P01
Survey date	17-Jul-17	Presumed	Yes
Building :	01 00 Main School		
Floor	G	Room	045 Quiet room
Location	WALL MOUNTED		
Quantity sampled	1 NO	Use	Asbestos Insulating Board
Material assessment			
Product type	AIB, Textiles, Rope, etc(see Use) (2)		
Damage/deterioration	Low damage (1)		
Surface treatment	Unsealed AIB, enc Lagging&Spray (2)		
Asbestos type	Crocidolite (3)		

Priority assessment

Type of activity	Rare disturbance activity (0)
Location	Rooms up to 100m2 (2)
Accessibility	Occasionally disturbed (1)
Extent	<10m2 or 10m pipe run (1)

Occupants using space	4 to 10 (2)
Frequency of use	Daily (3)
Average time of use	>6 hours (3)
Type of maintenance	Minor disturbance (0)
Frequency of maintenance	<1 per year (1)

Material score	8
Priority score	5
Banding	Removed

Presumed crocidolite asbestos. No access. Presumed to contain Insulation board and gaskets

Asbestos Register Detail

Site 01038 : Bracken Lane Primary and Nursery



Monitor & Manage

Amosite asbestos. School informed removed at time of 2012/2013 refurbishment but cannot confirm. Treat with caution.

Reference 104 Sample number 01038-01-45-24
Survey date 17-Jul-17 Presumed No

Building : 01 00 Main School
Floor G Room 045 Quiet room
Location UNDER WINDOW
Quantity sampled 3M2 Use

Material assessment

Product type AIB, Textiles, Rope, etc (see Use) (2)
Damage/deterioration Medium damage (2)
Surface treatment Enc Lagging & Sprays, AIB, etc (1)
Asbestos type Amphibole ex. Crocidolite (2)

Priority assessment

Type of activity Low disturbance activity (1)
Location Rooms up to 100m2 (2)
Accessibility Occasionally disturbed (1)
Extent <10m2 or 10m pipe run (1)

Occupants using space 4 to 10 (2)
Frequency of use Daily (3)
Average time of use >6 hours (3)
Type of maintenance Minor disturbance (0)
Frequency of maintenance ACM unlikely to be disturbed (0)

Material score 7
Priority score 5
Banding Low



jgcheck03/06/2010

Reference 105 Sample number 01038-01-44-P01
Survey date 17-Jul-17 Presumed No

Building : 01 00 Main School
Floor Room 044 Classroom
Location WALL MOUNTED
Quantity sampled 1 NO Use Asbestos Insulating Board

Material assessment

Product type AIB, Textiles, Rope, etc (see Use) (2)
Damage/deterioration High damage (3)
Surface treatment Unsealed AIB, enc Lagging & Spray (2)
Asbestos type Crocidolite (3)

Priority assessment

Type of activity Low disturbance activity (1)
Location Rooms up to 100m2 (2)
Accessibility Occasionally disturbed (1)
Extent <10m2 or 10m pipe run (1)

Occupants using space 4 to 10 (2)
Frequency of use Daily (3)
Average time of use >6 hours (3)
Type of maintenance Minor disturbance (0)
Frequency of maintenance >1 per year (2)

Material score 10
Priority score 6
Banding Removed

Asbestos Register Detail

Site 01038 : Bracken Lane Primary and Nursery



Reference	106	Sample number	01038-01-43-P01
Survey date	17-Jul-17	Presumed	Yes
Building :	01 00 Main School		
Floor	G	Room	043 Quiet room
Location	WALL MOUNTED		
Quantity sampled	1 NO	Use	Asbestos Insulating Board

Material assessment

Product type	AIB, Textiles, Rope, etc (see Use) (2)
Damage/deterioration	Low damage (1)
Surface treatment	Unsealed AIB, enc Lagging & Spray (2)
Asbestos type	Crocidolite (3)

Priority assessment

Type of activity	Rare disturbance activity (0)
Location	Rooms up to 100m2 (2)
Accessibility	Occasionally disturbed (1)
Extent	<10m2 or 10m pipe run (1)

Occupants using space	1 to 3 (1)
Frequency of use	Daily (3)
Average time of use	>6 hours (3)
Type of maintenance	Low disturbance (1)
Frequency of maintenance	<1 per year (1)

Material score	8
Priority score	5
Banding	Removed

Presumed crocidolite asbestos. No access. Presumed to contain insulation board and gaskets



Reference	107	Sample number	01038-01-43-25
Survey date	17-Jul-17	Presumed	No
Building :	01 00 Main School		
Floor	G	Room	043 Quiet room
Location	UNDER WINDOW		
Quantity sampled	3M2	Use	

Material assessment

Product type	AIB, Textiles, Rope, etc (see Use) (2)
Damage/deterioration	Medium damage (2)
Surface treatment	Enc Lagging & Sprays, AIB, etc (1)
Asbestos type	Amphibole ex. Crocidolite (2)

Priority assessment

Type of activity	Low disturbance activity (1)
Location	Rooms up to 100m2 (2)
Accessibility	Occasionally disturbed (1)
Extent	<10m2 or 10m pipe run (1)

Occupants using space	1 to 3 (1)
Frequency of use	Daily (3)
Average time of use	>6 hours (3)
Type of maintenance	Minor disturbance (0)
Frequency of maintenance	ACM unlikely to be disturbed (0)

Material score	7
Priority score	5
Banding	Low

Monitor & Manage

Amosite asbestos. School informed removed at time of 2012/2013 refurbishment but cannot confirm. Treat with caution.

Asbestos Register Detail

Site 01038 : Bracken Lane Primary and Nursery



Reference	108	Sample number	01038-01-42-P01
Survey date	17-Jul-17	Presumed	No
Building :	01 00 Main School		
Floor		Room	042 Classroom
Location	WALL MOUNTED		
Quantity sampled	1 NO	Use	Asbestos Insulating Board

Material assessment

Product type	AIB, Textiles, Rope, etc (see Use) (2)
Damage/deterioration	High damage (3)
Surface treatment	Unsealed AIB, enc Lagging & Spray (2)
Asbestos type	Crocidolite (3)

Priority assessment

Type of activity	Low disturbance activity (1)
Location	Rooms up to 100m2 (2)
Accessibility	Occasionally disturbed (1)
Extent	<10m2 or 10m pipe run (1)

Occupants using space	4 to 10 (2)
Frequency of use	Daily (3)
Average time of use	>6 hours (3)
Type of maintenance	Minor disturbance (0)
Frequency of maintenance	>1 per year (2)

Material score	10
Priority score	6
Banding	Removed

jgcheck04/06/2010



Reference	109	Sample number	01038-01-40-P01
Survey date	17-Jul-17	Presumed	No
Building :	01 00 Main School		
Floor	G	Room	040 Classroom
Location	WALL MOUNTED		
Quantity sampled	1 NO	Use	Asbestos Insulating Board

Material assessment

Product type	AIB, Textiles, Rope, etc (see Use) (2)
Damage/deterioration	High damage (3)
Surface treatment	Unsealed AIB, enc Lagging & Spray (2)
Asbestos type	Crocidolite (3)

Priority assessment

Type of activity	Low disturbance activity (1)
Location	Rooms up to 100m2 (2)
Accessibility	Occasionally disturbed (1)
Extent	<10m2 or 10m pipe run (1)

Occupants using space	4 to 10 (2)
Frequency of use	Daily (3)
Average time of use	>6 hours (3)
Type of maintenance	Minor disturbance (0)
Frequency of maintenance	>1 per year (2)

Material score	10
Priority score	6
Banding	Removed

jgcheck03/06/2010

Asbestos Register Detail

Site 01038 : Bracken Lane Primary and Nursery



Reference **110** Sample number **01038-01-38-P01**
 Survey date **17-Jul-17** Presumed **Yes**
 Building : **01 00 Main School**
 Floor Room **038 Classroom**
 Location **WALL MOUNTED**
 Quantity sampled **1 NO** Use **Asbestos Insulating Board**

Material assessment

Product type AIB, Textiles, Rope, etc (see Use) (2)
 Damage/deterioration Low damage (1)
 Surface treatment Unsealed AIB, enc Lagging & Spray (2)
 Asbestos type Crocidolite (3)

Priority assessment

Type of activity Rare disturbance activity (0)
 Location Rooms up to 100m2 (2)
 Accessibility Occasionally disturbed (1)
 Extent <10m2 or 10m pipe run (1)

Occupants using space 4 to 10 (2)
 Frequency of use Daily (3)
 Average time of use >6 hours (3)
 Type of maintenance Minor disturbance (0)
 Frequency of maintenance ACM unlikely to be disturbed (0)

Material score **8**
 Priority score **4**
 Banding **Removed**

Presumed crocidolite asbestos. No access. Presumed to contain Insulation board and gaskets



Reference **111** Sample number **01038-01-38-P02**
 Survey date **17-Jul-17** Presumed **Yes**
 Building : **01 00 Main School**
 Floor Room **038 Classroom**
 Location **WALL MOUNTED**
 Quantity sampled **1 NO** Use **Asbestos Insulating Board**

Material assessment

Product type AIB, Textiles, Rope, etc (see Use) (2)
 Damage/deterioration Low damage (1)
 Surface treatment Unsealed AIB, enc Lagging & Spray (2)
 Asbestos type Crocidolite (3)

Priority assessment

Type of activity Rare disturbance activity (0)
 Location Rooms up to 100m2 (2)
 Accessibility Occasionally disturbed (1)
 Extent <10m2 or 10m pipe run (1)

Occupants using space 4 to 10 (2)
 Frequency of use Daily (3)
 Average time of use >6 hours (3)
 Type of maintenance Minor disturbance (0)
 Frequency of maintenance <1 per year (1)

Material score **8**
 Priority score **5**
 Banding **Removed**

Presumed crocidolite asbestos. No access. Presumed to contain Insulation board and gaskets

Asbestos Register Detail

Site **01038 : Bracken Lane Primary and Nursery**



Reference	112	Sample number	01038-01-37-P01
Survey date	17-Jul-17	Presumed	No
Building :	01 00 Main School		
Floor	G	Room	037 Classroom
Location	WALL MOUNTED		
Quantity sampled	1 NO	Use	Asbestos Insulating Board

Material assessment

Product type	AIB, Textiles, Rope, etc (see Use) (2)
Damage/deterioration	High damage (3)
Surface treatment	Unsealed AIB, enc Lagging & Spray (2)
Asbestos type	Crocidolite (3)

Priority assessment

Type of activity	Low disturbance activity (1)
Location	Rooms up to 100m2 (2)
Accessibility	Occasionally disturbed (1)
Extent	<10m2 or 10m pipe run (1)

Occupants using space	4 to 10 (2)
-----------------------	-------------

Frequency of use	Daily (3)
------------------	-----------

Average time of use	>6 hours (3)
---------------------	--------------

Type of maintenance	Minor disturbance (0)
---------------------	-----------------------

Frequency of maintenance	>1 per year (2)
--------------------------	-----------------

Material score	10
----------------	-----------

Priority score	6
----------------	----------

Banding	Removed
---------	----------------

jgcheck04/06/2010



Reference	113	Sample number	01038-01-37-P02
Survey date	17-Jul-17	Presumed	Yes
Building :	01 00 Main School		
Floor	G	Room	037 Classroom
Location	UNDER SINK		
Quantity sampled	1 NO	Use	Bitumen products

Material assessment

Product type	Asb-Reinfd comps, etc (see Use) (1)
Damage/deterioration	High damage (3)
Surface treatment	Composite materials (0)
Asbestos type	Crocidolite (3)

Priority assessment

Type of activity	Low disturbance activity (1)
Location	Rooms up to 100m2 (2)
Accessibility	Usually inaccessible/unlikely (0)
Extent	Small amounts or items (0)

Occupants using space	4 to 10 (2)
-----------------------	-------------

Frequency of use	Daily (3)
------------------	-----------

Average time of use	>6 hours (3)
---------------------	--------------

Type of maintenance	Minor disturbance (0)
---------------------	-----------------------

Frequency of maintenance	ACM unlikely to be disturbed (0)
--------------------------	----------------------------------

Material score	7
----------------	----------

Priority score	5
----------------	----------

Banding	Low
---------	------------

Monitor & Manage

Presumed crocidolite asbestos. No access

Asbestos Register Detail

Site 01038 : Bracken Lane Primary and Nursery



Reference 114 Sample number 01038-01-37-26
Survey date 17-Jul-17 Presumed No

Building : 01 00 Main School
Floor G Room 037 Classroom
Location FLOOR
Quantity sampled 25M2 Use Flooring

Material assessment

Product type Asb-Reinfd comps,etc (see Use) (1)
Damage/deterioration Good condition (0)
Surface treatment Composite materials (0)
Asbestos type Not asbestos (0)

No Asbestos Detected

Material score

Banding



Reference 115 Sample number 01038-01-33-P01
Survey date 17-Jul-17 Presumed Yes
Building : 01 00 Main School
Floor Room 033 Pupil WC
Location WALL MOUNTED
Quantity sampled 1 NO Use Asbestos Insulating Board

Material assessment

Product type AIB,Textiles,Rope,etc(see Use) (2)
Damage/deterioration Low damage (1)
Surface treatment Unsealed AIB,enc Lagging&Spray (2)
Asbestos type Crocidolite (3)

Priority assessment

Type of activity Low disturbance activiy (1)
Location Rooms up to 100m2 (2)
Accessibility Occasionally disturbed (1)
Extent <10m2 or 10m pipe run (1)

Occupants using space 1 to 3 (1)
Frequency of use Daily (3)
Average time of use >1 to <3 hours (1)
Type of maintenance Minor disturbance (0)
Frequency of maintenance <1 per year (1)

Material score 8
Priority score 5
Banding Removed

Presumed crocidolite asbestos. No access. Presumed to contain Insulation board and gaskets

Asbestos Register Detail

Site 01038 : Bracken Lane Primary and Nursery



Reference	116	Sample number	01038-01-32-P01
Survey date	17-Jul-17	Presumed	Yes
Building :	01 00 Main School		
Floor		Room	032 Pupil WC
Location	WALL MOUNTED		
Quantity sampled	1 NO	Use	Asbestos Insulating Board

Material assessment

Product type	AIB, Textiles, Rope, etc (see Use) (2)
Damage/deterioration	Low damage (1)
Surface treatment	Unsealed AIB, enc Lagging & Spray (2)
Asbestos type	Crocidolite (3)

Priority assessment

Type of activity	Low disturbance activity (1)
Location	Rooms up to 100m2 (2)
Accessibility	Occasionally disturbed (1)
Extent	<10m2 or 10m pipe run (1)

Occupants using space	1 to 3 (1)
-----------------------	------------

Frequency of use	Daily (3)
------------------	-----------

Average time of use	>1 to <3 hours (1)
---------------------	--------------------

Type of maintenance	Minor disturbance (0)
---------------------	-----------------------

Frequency of maintenance	<1 per year (1)
--------------------------	-----------------

Material score	8
----------------	---

Priority score	5
----------------	---

Banding	Removed
---------	---------

Presumed crocidolite asbestos. No access. Presumed to contain Insulation board and gaskets



Reference	117	Sample number	01038-01-31-P01
Survey date	17-Jul-17	Presumed	Yes
Building :	01 00 Main School		
Floor		Room	031 Circulation
Location	WALL MOUNTED		
Quantity sampled	1 NO	Use	Asbestos Insulating Board

Material assessment

Product type	AIB, Textiles, Rope, etc (see Use) (2)
Damage/deterioration	Low damage (1)
Surface treatment	Unsealed AIB, enc Lagging & Spray (2)
Asbestos type	Crocidolite (3)

Priority assessment

Type of activity	Low disturbance activity (1)
Location	Rooms up to 100m2 (2)
Accessibility	Occasionally disturbed (1)
Extent	<10m2 or 10m pipe run (1)

Occupants using space	1 to 3 (1)
-----------------------	------------

Frequency of use	Daily (3)
------------------	-----------

Average time of use	>1 to <3 hours (1)
---------------------	--------------------

Type of maintenance	Minor disturbance (0)
---------------------	-----------------------

Frequency of maintenance	<1 per year (1)
--------------------------	-----------------

Material score	8
----------------	---

Priority score	5
----------------	---

Banding	Removed
---------	---------

No access. Presumed to contain Insulation board and gaskets

Asbestos Register Detail

Site 01038 : Bracken Lane Primary and Nursery



Reference	118	Sample number	01038-01-30-P01
Survey date	17-Jul-17	Presumed	No
Building :	01 00 Main School		
Floor	G	Room	030 Classroom
Location	WALL MOUNTED		
Quantity sampled	1 NO	Use	Asbestos Insulating Board

Material assessment

Product type	AIB, Textiles, Rope, etc (see Use) (2)
Damage/deterioration	High damage (3)
Surface treatment	Unsealed AIB, enc Lagging & Spray (2)
Asbestos type	Crocidolite (3)

Priority assessment

Type of activity	Low disturbance activity (1)
Location	Rooms up to 100m2 (2)
Accessibility	Occasionally disturbed (1)
Extent	Small amounts or items (0)
Occupants using space	1 to 3 (1)
Frequency of use	Daily (3)
Average time of use	>1 to <3 hours (1)
Type of maintenance	Low disturbance (1)
Frequency of maintenance	>1 per year (2)

Material score	10
Priority score	6
Banding	Removed

jgcheck03/06/2010



Reference	119	Sample number	01038-01-30-13
Survey date	17-Jul-17	Presumed	No
Building :	01 00 Main School		
Floor	G	Room	030 Classroom
Location	WHOLE FLOOR		
Quantity sampled	30M2	Use	Flooring

Material assessment

Product type	Asb-Reinfd comps, etc (see Use) (1)
Damage/deterioration	Good condition (0)
Surface treatment	Composite materials (0)
Asbestos type	Not asbestos (0)

No Asbestos Detected

Under grey carpet

Material score	
Banding	

Asbestos Register Detail

Site 01038 : Bracken Lane Primary and Nursery



Reference	120	Sample number	01038-01-29-P01
Survey date	17-Jul-17	Presumed	Yes
Building :	01 00 Main School		
Floor	G	Room	029 Office
Location	WALL MOUNTED		
Quantity sampled	1 NO	Use	Asbestos Insulating Board

Material assessment

Product type	AIB, Textiles, Rope, etc (see Use) (2)
Damage/deterioration	Low damage (1)
Surface treatment	Unsealed AIB, enc Lagging & Spray (2)
Asbestos type	Crocidolite (3)

Priority assessment

Type of activity	Low disturbance activity (1)
Location	Rooms up to 100m2 (2)
Accessibility	Occasionally disturbed (1)
Extent	Small amounts or items (0)

Occupants using space	1 to 3 (1)
-----------------------	------------

Frequency of use	Daily (3)
------------------	-----------

Average time of use	>1 to <3 hours (1)
---------------------	--------------------

Type of maintenance	Low disturbance (1)
---------------------	---------------------

Frequency of maintenance	<1 per year (1)
--------------------------	-----------------

Material score	8
----------------	---

Priority score	5
----------------	---

Banding	Removed
---------	---------

Presumed crocidolite asbestos. No access. Presumed to contain Insulation board and gaskets



Reference	121	Sample number	01038-01-28-P01
Survey date	17-Jul-17	Presumed	Yes
Building :	01 00 Main School		
Floor	G	Room	028 Quiet room
Location	WALL MOUNTED		
Quantity sampled	1 NO	Use	Asbestos Insulating Board

Material assessment

Product type	AIB, Textiles, Rope, etc (see Use) (2)
Damage/deterioration	Low damage (1)
Surface treatment	Unsealed AIB, enc Lagging & Spray (2)
Asbestos type	Crocidolite (3)

Priority assessment

Type of activity	Low disturbance activity (1)
Location	Rooms up to 100m2 (2)
Accessibility	Occasionally disturbed (1)
Extent	<10m2 or 10m pipe run (1)

Occupants using space	1 to 3 (1)
-----------------------	------------

Frequency of use	Daily (3)
------------------	-----------

Average time of use	>1 to <3 hours (1)
---------------------	--------------------

Type of maintenance	Low disturbance (1)
---------------------	---------------------

Frequency of maintenance	<1 per year (1)
--------------------------	-----------------

Material score	8
----------------	---

Priority score	5
----------------	---

Banding	Removed
---------	---------

Presumed crocidolite asbestos. No access. Presumed to contain Insulation board and gaskets

Asbestos Register Detail

Site 01038 : Bracken Lane Primary and Nursery



Reference	122	Sample number	01038-01-27-P01
Survey date	17-Jul-17	Presumed	No
Building :	01 00 Main School		
Floor		Room	027 Classroom
Location	WALL MOUNTED		
Quantity sampled	1 NO	Use	Asbestos Insulating Board

Material assessment

Product type	AIB, Textiles, Rope, etc (see Use) (2)
Damage/deterioration	High damage (3)
Surface treatment	Unsealed AIB, enc Lagging & Spray (2)
Asbestos type	Crocidolite (3)

Priority assessment

Type of activity	Low disturbance activity (1)
Location	Rooms up to 100m2 (2)
Accessibility	Occasionally disturbed (1)
Extent	<10m2 or 10m pipe run (1)

Occupants using space	4 to 10 (2)
-----------------------	-------------

Frequency of use	Daily (3)
------------------	-----------

Average time of use	>6 hours (3)
---------------------	--------------

Type of maintenance	Low disturbance (1)
---------------------	---------------------

Frequency of maintenance	>1 per year (2)
--------------------------	-----------------

Material score	10
----------------	----

Priority score	7
----------------	---

Banding	Removed
---------	---------

jgcheck03/06/2010



Reference	123	Sample number	01038-01-27-19
Survey date	17-Jul-17	Presumed	No

Building :	01 00 Main School		
Floor		Room	027 Classroom
Location	WHOLE FLOOR		
Quantity sampled	30M2	Use	Flooring

Material assessment

Product type	Asb-Reinfd comps, etc (see Use) (1)
Damage/deterioration	Good condition (0)
Surface treatment	Composite materials (0)
Asbestos type	Not asbestos (0)

No Asbestos Detected

Possibly still located under blue carpet floor covering.

Material score	
----------------	--

Banding	
---------	--

Asbestos Register Detail

Site 01038 : Bracken Lane Primary and Nursery



Reference	124	Sample number	01038-01-26-P01
Survey date	17-Jul-17	Presumed	Yes
Building :	01 00 Main School		
Floor		Room	026 Pupil WC
Location	WALL MOUNTED		
Quantity sampled	1 NO	Use	Asbestos Insulating Board

Material assessment

Product type	AIB, Textiles, Rope, etc (see Use) (2)
Damage/deterioration	Low damage (1)
Surface treatment	Unsealed AIB, enc Lagging & Spray (2)
Asbestos type	Crocidolite (3)

Priority assessment

Type of activity	Low disturbance activity (1)
Location	Rooms up to 100m2 (2)
Accessibility	Occasionally disturbed (1)
Extent	<10m2 or 10m pipe run (1)

Occupants using space	1 to 3 (1)
Frequency of use	Daily (3)
Average time of use	>1 to <3 hours (1)
Type of maintenance	Low disturbance (1)
Frequency of maintenance	<1 per year (1)

Material score	8
Priority score	5
Banding	Removed

No access. Presumed to contain Insulation board and gaskets



Reference	125	Sample number	01038-01-25-P01
Survey date	17-Jul-17	Presumed	Yes
Building :	01 00 Main School		
Floor		Room	025 Pupil WC
Location	WALL MOUNTED		
Quantity sampled	1 NO	Use	Asbestos Insulating Board

Material assessment

Product type	AIB, Textiles, Rope, etc (see Use) (2)
Damage/deterioration	Low damage (1)
Surface treatment	Unsealed AIB, enc Lagging & Spray (2)
Asbestos type	Crocidolite (3)

Priority assessment

Type of activity	Low disturbance activity (1)
Location	Rooms up to 100m2 (2)
Accessibility	Occasionally disturbed (1)
Extent	<10m2 or 10m pipe run (1)

Occupants using space	1 to 3 (1)
Frequency of use	Daily (3)
Average time of use	>1 to <3 hours (1)
Type of maintenance	Low disturbance (1)
Frequency of maintenance	<1 per year (1)

Material score	8
Priority score	5
Banding	Removed

Presumed crocidolite asbestos. No access. Presumed to contain Insulation board and gaskets

Asbestos Register Detail

Site 01038 : Bracken Lane Primary and Nursery



Reference	126	Sample number	01038-01-24-P01
Survey date	17-Jul-17	Presumed	Yes
Building :	01 00 Main School		
Floor		Room	024 Circulation
Location	WALL MOUNTED		
Quantity sampled	1 NO	Use	Asbestos Insulating Board

Material assessment

Product type	AIB, Textiles, Rope, etc (see Use) (2)
Damage/deterioration	Low damage (1)
Surface treatment	Unsealed AIB, enc Lagging & Spray (2)
Asbestos type	Crocidolite (3)

Priority assessment

Type of activity	Rare disturbance activity (0)
Location	Rooms up to 100m2 (2)
Accessibility	Usually inaccessible/unlikely (0)
Extent	<10m2 or 10m pipe run (1)

Occupants using space 4 to 10 (2)

Frequency of use Daily (3)

Average time of use >6 hours (3)

Type of maintenance Minor disturbance (0)

Frequency of maintenance <1 per year (1)

Material score 8

Priority score 5

Banding **Removed**

Presumed crocidolite asbestos. No access. Presumed to contain insulation board and gaskets



Reference	127	Sample number	01038-01-23-P01
Survey date	17-Jul-17	Presumed	Yes
Building :	01 00 Main School		
Floor	G	Room	023 Quiet room
Location	OFFICE		
Quantity sampled	1 NO	Use	Asbestos Insulating Board

Material assessment

Product type	AIB, Textiles, Rope, etc (see Use) (2)
Damage/deterioration	Low damage (1)
Surface treatment	Unsealed AIB, enc Lagging & Spray (2)
Asbestos type	Crocidolite (3)

Priority assessment

Type of activity	Low disturbance activity (1)
Location	Rooms up to 100m2 (2)
Accessibility	Occasionally disturbed (1)
Extent	<10m2 or 10m pipe run (1)

Occupants using space 1 to 3 (1)

Frequency of use Daily (3)

Average time of use >1 to <3 hours (1)

Type of maintenance Low disturbance (1)

Frequency of maintenance <1 per year (1)

Material score 8

Priority score 5

Banding **Removed**

Presumed crocidolite asbestos. No access. Presumed to contain insulation board and gaskets

Asbestos Register Detail

Site 01038 : Bracken Lane Primary and Nursery



Monitor & Manage

Amosite asbestos. School informed removed at time of 2012/2013 refurbishment but cannot confirm. Treat with caution.

Reference	128	Sample number	01038-01-23-18
Survey date	17-Jul-17	Presumed	No
Building :	01 00 Main School		
Floor	G	Room	023 Quiet room
Location	UNDER WINDOW		
Quantity sampled	3M2	Use	

Material assessment

Product type	AIB, Textiles, Rope, etc (see Use) (2)
Damage/deterioration	Low damage (1)
Surface treatment	Enc Lagging & Sprays, AIB, etc (1)
Asbestos type	Amphibole ex. Crocidolite (2)

Priority assessment

Type of activity	Low disturbance activity (1)
Location	Rooms up to 100m2 (2)
Accessibility	Occasionally disturbed (1)
Extent	<10m2 or 10m pipe run (1)

Occupants using space	4 to 10 (2)
Frequency of use	Daily (3)
Average time of use	>6 hours (3)
Type of maintenance	Low disturbance (1)
Frequency of maintenance	ACM unlikely to be disturbed (0)

Material score	6
Priority score	6
Banding	Low



jgcheck03/06/2010

Reference	129	Sample number	01038-01-22-P01
Survey date	17-Jul-17	Presumed	No
Building :	01 00 Main School		
Floor		Room	022 Classroom
Location	WALL MOUNTED		
Quantity sampled	1 NO	Use	Asbestos Insulating Board

Material assessment

Product type	AIB, Textiles, Rope, etc (see Use) (2)
Damage/deterioration	High damage (3)
Surface treatment	Unsealed AIB, enc Lagging & Spray (2)
Asbestos type	Crocidolite (3)

Priority assessment

Type of activity	Low disturbance activity (1)
Location	Rooms up to 100m2 (2)
Accessibility	Occasionally disturbed (1)
Extent	<10m2 or 10m pipe run (1)

Occupants using space	4 to 10 (2)
Frequency of use	Daily (3)
Average time of use	>6 hours (3)
Type of maintenance	Low disturbance (1)
Frequency of maintenance	>1 per year (2)

Material score	10
Priority score	7
Banding	Removed

Asbestos Register Detail

Site 01038 : Bracken Lane Primary and Nursery



Reference	130	Sample number	01038-01-22-P02
Survey date	17-Jul-17	Presumed	Yes
Building :	01 00 Main School		
Floor		Room	022 Classroom
Location	WALL MOUNTED		
Quantity sampled	1 NO	Use	Asbestos Insulating Board

Material assessment

Product type	AIB, Textiles, Rope, etc(see Use) (2)
Damage/deterioration	Low damage (1)
Surface treatment	Unsealed AIB, enc Lagging&Spray (2)
Asbestos type	Crocidolite (3)

Priority assessment

Type of activity	Rare disturbance activity (0)
Location	Rooms up to 100m2 (2)
Accessibility	Usually inaccessible/unlikely (0)
Extent	Small amounts or items (0)

Occupants using space 4 to 10 (2)

Frequency of use Daily (3)

Average time of use >6 hours (3)

Type of maintenance Low disturbance (1)

Frequency of maintenance <1 per year (1)

Material score 8

Priority score 5

Banding **Removed**

Presumed crocidolite asbestos. Presume to contain Insulation board, rope seals and flash pads



Reference	131	Sample number	01038-01-21-P01
Survey date	17-Jul-17	Presumed	Yes
Building :	01 00 Main School		
Floor		Room	021 Reprographics
Location	WALL MOUNTED		
Quantity sampled	1 NO	Use	Asbestos Insulating Board

Material assessment

Product type	AIB, Textiles, Rope, etc(see Use) (2)
Damage/deterioration	Low damage (1)
Surface treatment	Unsealed AIB, enc Lagging&Spray (2)
Asbestos type	Crocidolite (3)

Priority assessment

Type of activity	Low disturbance activity (1)
Location	Rooms up to 100m2 (2)
Accessibility	Occasionally disturbed (1)
Extent	<10m2 or 10m pipe run (1)

Occupants using space 1 to 3 (1)

Frequency of use Daily (3)

Average time of use >1 to <3 hours (1)

Type of maintenance Low disturbance (1)

Frequency of maintenance <1 per year (1)

Material score 8

Priority score 5

Banding **Removed**

Presumed crocidolite asbestos. No access. Presumed to contain Insulation board and gaskets

Asbestos Register Detail

Site 01038 : Bracken Lane Primary and Nursery



Monitor & Manage

Amosite asbestos. School informed removed at time of 2012/13 refurbishment but cannot confirm. Treat with caution.

Reference	132	Sample number	01038-01-21-17
Survey date	17-Jul-17	Presumed	No
Building :	01 00 Main School	Room	021 Reprographics
Floor			
Location	UNDER WINDOW		
Quantity sampled	3M2	Use	

Material assessment

Product type	AIB, Textiles, Rope, etc (see Use) (2)
Damage/deterioration	Low damage (1)
Surface treatment	Enc Lagging & Sprays, AIB, etc (1)
Asbestos type	Amphibole ex. Crocidolite (2)

Priority assessment

Type of activity	Low disturbance activity (1)
Location	Rooms up to 100m2 (2)
Accessibility	Occasionally disturbed (1)
Extent	<10m2 or 10m pipe run (1)

Occupants using space	4 to 10 (2)
Frequency of use	Daily (3)
Average time of use	>6 hours (3)
Type of maintenance	Low disturbance (1)
Frequency of maintenance	ACM unlikely to be disturbed (0)

Material score	6
Priority score	6
Banding	Low



jgcheck03/06/2010

Reference	133	Sample number	01038-01-20-P01
Survey date	17-Jul-17	Presumed	Yes
Building :	01 00 Main School	Room	020 ICT Suite
Floor			
Location	WALL MOUNTED		
Quantity sampled	1 NO	Use	Asbestos Insulating Board

Material assessment

Product type	AIB, Textiles, Rope, etc (see Use) (2)
Damage/deterioration	High damage (3)
Surface treatment	Unsealed AIB, enc Lagging & Spray (2)
Asbestos type	Crocidolite (3)

Priority assessment

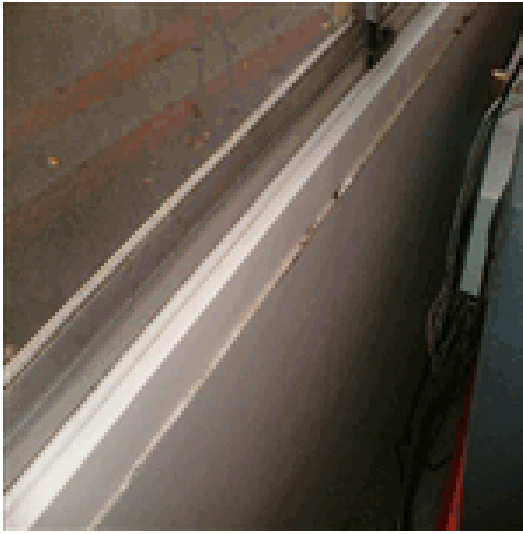
Type of activity	Low disturbance activity (1)
Location	Rooms up to 100m2 (2)
Accessibility	Occasionally disturbed (1)
Extent	Small amounts or items (0)

Occupants using space	1 to 3 (1)
Frequency of use	Daily (3)
Average time of use	>1 to <3 hours (1)
Type of maintenance	Low disturbance (1)
Frequency of maintenance	>1 per year (2)

Material score	10
Priority score	6
Banding	Removed

Asbestos Register Detail

Site 01038 : Bracken Lane Primary and Nursery



Reference	134	Sample number	01038-01-20-16
Survey date	17-Jul-17	Presumed	No
Building :	01 00 Main School		
Floor		Room	020 ICT Suite
Location	BEHIND WALL PANELS		
Quantity sampled	2M2	Use	Asbestos Insulating Board
Material assessment			
Product type	AIB, Textiles, Rope, etc (see Use) (2)		
Damage/deterioration	Medium damage (2)		
Surface treatment	Enc Lagging&Sprays, AIB, etc (1)		
Asbestos type	Not asbestos (0)		

No Asbestos Detected

Material score

Banding



Reference	135	Sample number	01038-01-20-14
Survey date	17-Jul-17	Presumed	No
Building :	01 00 Main School		
Floor		Room	020 ICT Suite
Location	DARK GREY TILES. WHOLE FLOOR		
Quantity sampled	20M2	Use	Flooring
Material assessment			
Product type	Asb-Reinfd comps, etc (see Use) (1)		
Damage/deterioration	Good condition (0)		
Surface treatment	Composite materials (0)		
Asbestos type	Not asbestos (0)		

No Asbestos Detected

Possibly still located under blue carpet floor covering.

Material score

Banding

Asbestos Register Detail

Site 01038 : Bracken Lane Primary and Nursery



Reference 136 Sample number 01038-01-20-15
Survey date 17-Jul-17 Presumed No

Building : 01 00 Main School
Floor Room 020 ICT Suite
Location GREY TILE PATCHES TO FLOOR
Quantity sampled 2M2 Use Flooring

Material assessment

Product type Asb-Reinfd comps,etc (see Use) (1)
Damage/deterioration Good condition (0)
Surface treatment Composite materials (0)
Asbestos type Not asbestos (0)

No Asbestos Detected

Possibly still located under blue carpet floor covering.

Material score

Banding



Reference 138 Sample number 01038-01-19-23
Survey date 17-Jul-17 Presumed No

Building : 01 00 Main School
Floor Room 019 Classroom
Location UNDER SINK
Quantity sampled 1 NO Use Bitumen products

Material assessment

Product type Asb-Reinfd comps,etc (see Use) (1)
Damage/deterioration Good condition (0)
Surface treatment Composite materials (0)
Asbestos type Not asbestos (0)

No Asbestos Detected

Material score

Banding

Asbestos Register Detail

Site 01038 : Bracken Lane Primary and Nursery



Reference	139	Sample number	01038-01-15-P01
Survey date	17-Jul-17	Presumed	Yes
Building :	01 00 Main School		
Floor	G	Room	015 Resources
Location	WALL MOUNTED		
Quantity sampled	1 NO	Use	Asbestos Insulating Board

Material assessment

Product type	AIB, Textiles, Rope, etc (see Use) (2)
Damage/deterioration	High damage (3)
Surface treatment	Unsealed AIB, enc Lagging & Spray (2)
Asbestos type	Crocidolite (3)

Priority assessment

Type of activity	Low disturbance activity (1)
Location	Rooms up to 100m2 (2)
Accessibility	Occasionally disturbed (1)
Extent	<10m2 or 10m pipe run (1)

Occupants using space 1 to 3 (1)

Frequency of use Daily (3)

Average time of use >1 to <3 hours (1)

Type of maintenance Minor disturbance (0)

Frequency of maintenance >1 per year (2)

Material score 10

Priority score 5

Banding **Removed**

jgcheck03/06/2010



Reference	140	Sample number	01038-01-15-20
Survey date	17-Jul-17	Presumed	No
Building :	01 00 Main School		
Floor	G	Room	015 Resources
Location	GREY BLACK TILES. WHOLE FLO		
Quantity sampled	25M2	Use	Flooring

Material assessment

Product type	Asb-Reinfd comps, etc (see Use) (1)
Damage/deterioration	Good condition (0)
Surface treatment	Composite materials (0)
Asbestos type	Not asbestos (0)

No Asbestos Detected

Possibly still located under blue carpet floor covering.

Material score

Banding

Asbestos Register Detail

Site 01038 : Bracken Lane Primary and Nursery



Reference	141	Sample number	01038-01-15-21
Survey date	17-Jul-17	Presumed	No
Building :	01 00 Main School		
Floor	G	Room	015 Resources
Location	GREY TILES. PATCHES TO FLOOR		
Quantity sampled	2M2	Use	Flooring
Material assessment			
Product type	Asb-Reinfd comps,etc (see Use) (1)		
Damage/deterioration	Good condition (0)		
Surface treatment	Composite materials (0)		
Asbestos type	Not asbestos (0)		

No Asbestos Detected

Possibly still located under blue carpet floor covering.

Material score

Banding



Reference	142	Sample number	01038-01-15-22
Survey date	17-Jul-17	Presumed	No
Building :	01 00 Main School		
Floor	G	Room	015 Resources
Location	BEIGE TILE PATCHES TO FLOOR		
Quantity sampled	2M2	Use	Flooring
Material assessment			
Product type	Asb-Reinfd comps,etc (see Use) (1)		
Damage/deterioration	Good condition (0)		
Surface treatment	Composite materials (0)		
Asbestos type	Chrysotile (1)		

Priority assessment

Type of activity	Low disturbance activity (1)
Location	Rooms up to 100m2 (2)
Accessibility	Usually inaccessible/unlikely (0)
Extent	>10m2 to <50m2 or >10m to <50m (2)
Occupants using space	1 to 3 (1)
Frequency of use	Daily (3)
Average time of use	>1 to <3 hours (1)
Type of maintenance	Minor disturbance (0)
Frequency of maintenance	ACM unlikely to be disturbed (0)

Possibly still located under blue carpet floor covering.

Material score

Priority score

Banding

2

4

Removed

Asbestos Register Detail

Site 01038 : Bracken Lane Primary and Nursery



Reference	143	Sample number	01038-01-14-P01
Survey date	17-Jul-17	Presumed	No
Building :	01 00 Main School		
Floor		Room	014 Craft Room
Location	WALL MOUNTED		
Quantity sampled	1 NO	Use	Asbestos Insulating Board

Material assessment

Product type	AIB, Textiles, Rope, etc (see Use) (2)
Damage/deterioration	High damage (3)
Surface treatment	Unsealed AIB, enc Lagging & Spray (2)
Asbestos type	Crocidolite (3)

Priority assessment

Type of activity	Low disturbance activity (1)
Location	Rooms up to 100m2 (2)
Accessibility	Occasionally disturbed (1)
Extent	Small amounts or items (0)

Occupants using space	1 to 3 (1)
-----------------------	------------

Frequency of use	Daily (3)
------------------	-----------

Average time of use	>1 to <3 hours (1)
---------------------	--------------------

Type of maintenance	Low disturbance (1)
---------------------	---------------------

Frequency of maintenance	>1 per year (2)
--------------------------	-----------------

Material score	10
Priority score	6
Banding	Removed

jgcheck03/06/2010



Reference	144	Sample number	01038-01-14-10
Survey date	17-Jul-17	Presumed	No
Building :	01 00 Main School		
Floor		Room	014 Craft Room
Location	UNDER SINK		
Quantity sampled	1 NO	Use	Bitumen products

Material assessment

Product type	Asb-Reinfd comps, etc (see Use) (1)
Damage/deterioration	Good condition (0)
Surface treatment	Composite materials (0)
Asbestos type	Chrysotile (1)

Priority assessment

Type of activity	Low disturbance activity (1)
Location	Rooms up to 100m2 (2)
Accessibility	Usually inaccessible/unlikely (0)
Extent	Small amounts or items (0)

Occupants using space	1 to 3 (1)
-----------------------	------------

Frequency of use	Daily (3)
------------------	-----------

Average time of use	<1 hour (0)
---------------------	-------------

Type of maintenance	Minor disturbance (0)
---------------------	-----------------------

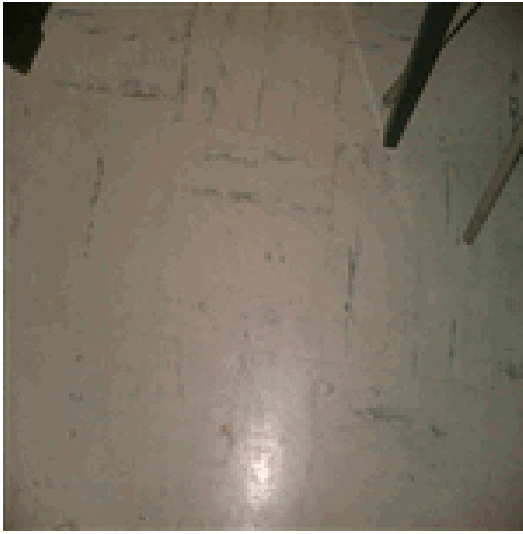
Frequency of maintenance	ACM unlikely to be disturbed (0)
--------------------------	----------------------------------

Material score	2
Priority score	3
Banding	Removed

jgcheck03/06/2010

Asbestos Register Detail

Site 01038 : Bracken Lane Primary and Nursery



Reference **145** Sample number **01038-01-14-08**
 Survey date **17-Jul-17** Presumed **No**
 Building : **01 00 Main School**
 Floor Room 014 Craft Room
 Location GREY AND BLACK. WHOLE FLOO
 Quantity sampled 30M2 Use Flooring

Material assessment

Product type Asb-Reinfd comps,etc (see Use) (1)
 Damage/deterioration Good condition (0)
 Surface treatment Composite materials (0)
 Asbestos type Chrysotile (1)

Priority assessment

Type of activity Low disturbance activiy (1)
 Location Rooms up to 100m2 (2)
 Accessibility Easily disturbed (2)
 Extent Small amounts or items (0)

Occupants using space 1 to 3 (1)
 Frequency of use Monthly (1)
 Average time of use >6 hours (3)
 Type of maintenance Minor disturbance (0)
 Frequency of maintenance <1 per year (1)

Material score 2
 Priority score 5
 Banding **Removed**

Possibly still located under green/grey speckled vinyl floor covering.



Reference **146** Sample number **01038-01-14-09**
 Survey date **17-Jul-17** Presumed **No**
 Building : **01 00 Main School**
 Floor Room 014 Craft Room
 Location BROWN TILLE. PATCHES TO FLO
 Quantity sampled 2M2 Use Flooring

Material assessment

Product type Asb-Reinfd comps,etc (see Use) (1)
 Damage/deterioration Good condition (0)
 Surface treatment Composite materials (0)
 Asbestos type Not asbestos (0)

No Asbestos Detected

Possibly still located under green/grey speckled vinyl floor covering.

Material score
 Banding

Asbestos Register Detail

Site 01038 : Bracken Lane Primary and Nursery



Reference	147	Sample number	01038-01-14-11
Survey date	17-Jul-17	Presumed	No
Building :	01 00 Main School		
Floor		Room	014 Craft Room
Location	DARK GREY FLOOR TILES		
Quantity sampled	2M2	Use	Flooring
Material assessment			
Product type	Asb-Reinfd comps,etc (see Use) (1)		
Damage/deterioration	Good condition (0)		
Surface treatment	Composite materials (0)		
Asbestos type	Not asbestos (0)		

No Asbestos Detected

Possibly still located under green/grey speckled vinyl floor covering.

Material score

Banding



Reference	148	Sample number	01038-01-14-12
Survey date	17-Jul-17	Presumed	No
Building :	01 00 Main School		
Floor		Room	014 Craft Room
Location	GREY FLOOR TILES		
Quantity sampled	2M2	Use	Flooring
Material assessment			
Product type	Asb-Reinfd comps,etc (see Use) (1)		
Damage/deterioration	Good condition (0)		
Surface treatment	Composite materials (0)		
Asbestos type	Chrysotile (1)		

Priority assessment

Type of activity	Low disturbance activity (1)
Location	Rooms up to 100m2 (2)
Accessibility	Easily disturbed (2)
Extent	Small amounts or items (0)

Occupants using space	1 to 3 (1)
Frequency of use	Monthly (1)
Average time of use	>6 hours (3)
Type of maintenance	Minor disturbance (0)
Frequency of maintenance	ACM unlikely to be disturbed (0)

Material score	2
Priority score	4
Banding	Removed

Possibly still located under green/grey speckled vinyl floor covering.

Asbestos Register Detail

Site 01038 : Bracken Lane Primary and Nursery



Monitor & Manage

Presumed crocidolite asbestos. No access. Presumed to contain Insulation board and gaskets

Reference	149	Sample number	01038-01-13-P01
Survey date	17-Jul-17	Presumed	Yes
Building :	01 00 Main School		
Floor		Room	013 Hall
Location	CEILING MOUNTED		
Quantity sampled	1 NO	Use	Asbestos Insulating Board

Material assessment

Product type	AIB, Textiles, Rope, etc (see Use) (2)
Damage/deterioration	Low damage (1)
Surface treatment	Unsealed AIB, enc Lagging & Spray (2)
Asbestos type	Crocidolite (3)

Priority assessment

Type of activity	Low disturbance activity (1)
Location	Rooms up to 100m2 (2)
Accessibility	Occasionally disturbed (1)
Extent	Small amounts or items (0)

Occupants using space 1 to 3 (1)

Frequency of use Daily (3)

Average time of use >1 to <3 hours (1)

Type of maintenance Low disturbance (1)

Frequency of maintenance <1 per year (1)

Material score	8
Priority score	5
Banding	Low



Presumed crocidolite asbestos. Presume to contain Insulation board, rope seals and flash pads

Reference	150	Sample number	01038-01-12-P01
Survey date	17-Jul-17	Presumed	Yes
Building :	01 00 Main School		
Floor		Room	012 Storage
Location	WALL MOUNTED		
Quantity sampled	1 NO	Use	Asbestos Insulating Board

Material assessment

Product type	AIB, Textiles, Rope, etc (see Use) (2)
Damage/deterioration	Low damage (1)
Surface treatment	Unsealed AIB, enc Lagging & Spray (2)
Asbestos type	Crocidolite (3)

Priority assessment

Type of activity	Periodic disturbance activity (2)
Location	Rooms up to 100m2 (2)
Accessibility	Occasionally disturbed (1)
Extent	Small amounts or items (0)

Occupants using space None (0)

Frequency of use Daily (3)

Average time of use <1 hour (0)

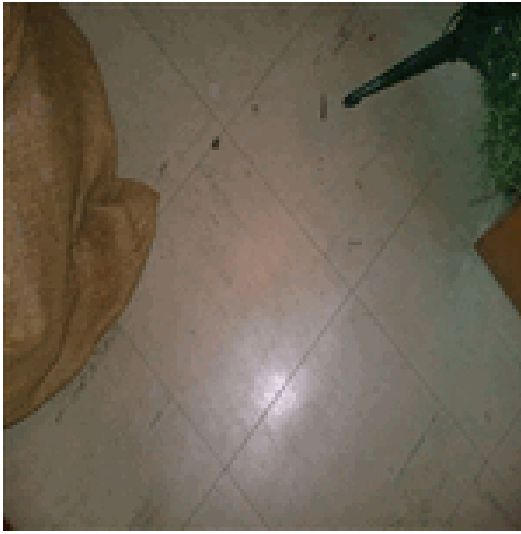
Type of maintenance Low disturbance (1)

Frequency of maintenance <1 per year (1)

Material score	8
Priority score	5
Banding	Removed

Asbestos Register Detail

Site 01038 : Bracken Lane Primary and Nursery



Reference **151** Sample number **01038-01-12-07**
Survey date **17-Jul-17** Presumed **No**

Building : 01 00 Main School
Floor Room 012 Storage
Location FLOOR
Quantity sampled 6M2 Use Flooring

Material assessment

Product type Asb-Reinfd comps,etc (see Use) (1)
Damage/deterioration Low damage (1)
Surface treatment Composite materials (0)
Asbestos type Chrysotile (1)

Priority assessment

Type of activity Periodic disturbance activity (2)
Location Rooms up to 100m2 (2)
Accessibility Easily disturbed (2)
Extent Small amounts or items (0)

Occupants using space 1 to 3 (1)
Frequency of use Monthly (1)
Average time of use >6 hours (3) Material score 3
Type of maintenance Minor disturbance (0) Priority score 6
Frequency of maintenance <1 per year (1) Banding **Low**

Monitor & Manage



Reference **152** Sample number **01038-01-11-SP01**
Survey date **17-Jul-17** Presumed **No**

Building : 01 00 Main School
Floor G Room 011 Pupil WC
Location TOILET
Quantity sampled 2M2 Use Asbestos Insulating Board

Material assessment

Product type AIB,Textiles,Rope,etc(see Use) (2)
Damage/deterioration Low damage (1)
Surface treatment Enc Lagging&Sprays,AIB,etc (1)
Asbestos type Crocidolite (3)

Priority assessment

Type of activity Low disturbance activiy (1)
Location Rooms up to 100m2 (2)
Accessibility Occasionally disturbed (1)
Extent Small amounts or items (0)

Occupants using space 1 to 3 (1)
Frequency of use Daily (3)
Average time of use >1 to <3 hours (1) Material score 7
Type of maintenance Low disturbance (1) Priority score 6
Frequency of maintenance >1 per year (2) Banding **Removed**

jgcheck03/06/2010

Asbestos Register Detail

Site 01038 : Bracken Lane Primary and Nursery



Reference	153	Sample number	01038-01-11-P01
Survey date	17-Jul-17	Presumed	Yes
Building :	01 00 Main School		
Floor	G	Room	011 Pupil WC
Location	WALL MOUNTED		
Quantity sampled	1 NO	Use	Asbestos Insulating Board

Material assessment

Product type	AIB, Textiles, Rope, etc (see Use) (2)
Damage/deterioration	Low damage (1)
Surface treatment	Unsealed AIB, enc Lagging & Spray (2)
Asbestos type	Crocidolite (3)

Priority assessment

Type of activity	Low disturbance activity (1)
Location	Rooms up to 100m2 (2)
Accessibility	Occasionally disturbed (1)
Extent	Small amounts or items (0)

Occupants using space	1 to 3 (1)
Frequency of use	Daily (3)
Average time of use	>1 to <3 hours (1)
Type of maintenance	Low disturbance (1)
Frequency of maintenance	<1 per year (1)

Material score	8
Priority score	5
Banding	Low

Monitor & Manage

Presumed crocidolite asbestos. No access. Presumed to contain Insulation board and gaskets



Reference	154	Sample number	01038-01-09-04
Survey date	17-Jul-17	Presumed	No
Building :	01 00 Main School		
Floor	G	Room	009 Nursery
Location	UNDER SINK		
Quantity sampled	1 NO	Use	Bitumen products

Material assessment

Product type	Asb-Reinfd comps, etc (see Use) (1)
Damage/deterioration	Good condition (0)
Surface treatment	Composite materials (0)
Asbestos type	Chrysotile (1)

Priority assessment

Type of activity	Low disturbance activity (1)
Location	Rooms up to 100m2 (2)
Accessibility	Usually inaccessible/unlikely (0)
Extent	Small amounts or items (0)

Occupants using space	1 to 3 (1)
Frequency of use	Daily (3)
Average time of use	<1 hour (0)
Type of maintenance	Minor disturbance (0)
Frequency of maintenance	ACM unlikely to be disturbed (0)

Material score	2
Priority score	3
Banding	Very Low

Monitor & Manage

Asbestos Register Detail

Site 01038 : Bracken Lane Primary and Nursery



Reference	155	Sample number	01038-01-09-P01
Survey date	17-Jul-17	Presumed	Yes
Building :	01 00 Main School		
Floor	G	Room	009 Nursery
Location	WALL MOUNTED		
Quantity sampled	1 NO	Use	Asbestos Insulating Board

Material assessment

Product type	AIB, Textiles, Rope, etc (see Use) (2)
Damage/deterioration	Low damage (1)
Surface treatment	Unsealed AIB, enc Lagging & Spray (2)
Asbestos type	Crocidolite (3)

Priority assessment

Type of activity	Low disturbance activity (1)
Location	Rooms up to 100m2 (2)
Accessibility	Occasionally disturbed (1)
Extent	Small amounts or items (0)

Occupants using space 1 to 3 (1)

Frequency of use Daily (3)

Average time of use >1 to <3 hours (1)

Type of maintenance Low disturbance (1)

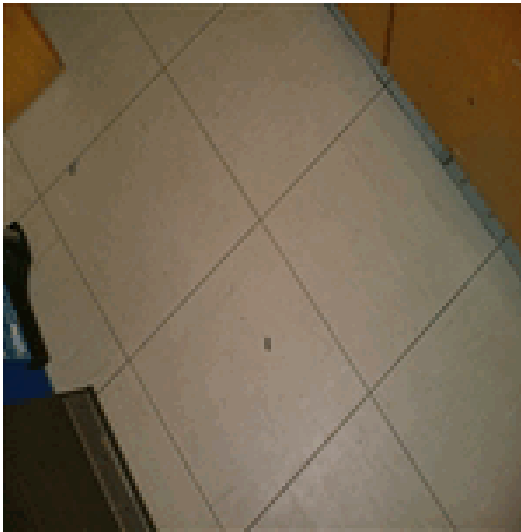
Frequency of maintenance <1 per year (1)

Material score 8

Priority score 5

Banding **Removed**

No access. Presumed to contain Insulation board and gaskets.
Presumed crocidolite asbestos.



Reference	156	Sample number	01038-01-09-06
Survey date	17-Jul-17	Presumed	No

Building :	01 00 Main School		
Floor	G	Room	009 Nursery
Location	FLOOR		
Quantity sampled	6M2	Use	Flooring

Material assessment

Product type	Asb-Reinfd comps, etc (see Use) (1)
Damage/deterioration	Good condition (0)
Surface treatment	Composite materials (0)
Asbestos type	Not asbestos (0)

No Asbestos Detected

Material score

Banding

Asbestos Register Detail

Site 01038 : Bracken Lane Primary and Nursery



Reference **157** Sample number **01038-01-09-05**
Survey date **17-Jul-17** Presumed **No**

Building : 01 00 Main School
Floor G Room 009 Nursery
Location GREY FLOOR TILES
Quantity sampled 1.5M2 Use Flooring

Material assessment

Product type Asb-Reinfd comps,etc (see Use) (1)
Damage/deterioration Low damage (1)
Surface treatment Composite materials (0)
Asbestos type Chrysotile (1)

Priority assessment

Type of activity Low disturbance activity (1)
Location Rooms up to 100m2 (2)
Accessibility Easily disturbed (2)
Extent Small amounts or items (0)

Occupants using space 1 to 3 (1)
Frequency of use Monthly (1)
Average time of use >6 hours (3) Material score 3
Type of maintenance Minor disturbance (0) Priority score 4
Frequency of maintenance ACM unlikely to be disturbed (0) Banding **Removed**



Reference **158** Sample number **01038-01-08-P02**
Survey date **17-Jul-17** Presumed **No**

Building : 01 00 Main School
Floor G Room 008 Nursery
Location WALL MOUNTED
Quantity sampled 2 NO Use Asbestos Insulating Board

Material assessment

Product type AIB,Textiles,Rope,etc(see Use) (2)
Damage/deterioration High damage (3)
Surface treatment Unsealed AIB,enc Lagging&Spray (2)
Asbestos type Crocidolite (3)

Priority assessment

Type of activity Low disturbance activity (1)
Location Rooms up to 100m2 (2)
Accessibility Occasionally disturbed (1)
Extent Small amounts or items (0)

Occupants using space 1 to 3 (1)
Frequency of use Daily (3)
Average time of use >1 to <3 hours (1) Material score 10
Type of maintenance Low disturbance (1) Priority score 6
Frequency of maintenance >1 per year (2) Banding **Removed**

jgcheck03/06/2010

Asbestos Register Detail

Site 01038 : Bracken Lane Primary and Nursery



Reference	159	Sample number	01038-01-08-P03
Survey date	17-Jul-17	Presumed	No
Building :	01 00 Main School		
Floor	G	Room	008 Nursery
Location	UNDER SINK		
Quantity sampled	1 NO	Use	Bitumen products

Material assessment

Product type	Asb-Reinfd comps,etc (see Use) (1)
Damage/deterioration	Good condition (0)
Surface treatment	Composite materials (0)
Asbestos type	Crocidolite (3)

Priority assessment

Type of activity	Low disturbance activiy (1)
Location	Rooms up to 100m2 (2)
Accessibility	Usually inaccessible/unlikely (0)
Extent	Small amounts or items (0)

Occupants using space 1 to 3 (1)

Frequency of use Daily (3)

Average time of use <1 hour (0)

Type of maintenance Minor disturbance (0)

Frequency of maintenance ACM unlikely to be disturbed (0)

Material score 4

Priority score 3

Banding **Removed**

jgcheck03/06/2010



Reference	160	Sample number	01038-01-08-P01
Survey date	17-Jul-17	Presumed	Yes
Building :	01 00 Main School		
Floor	G	Room	008 Nursery
Location	WALL MOUNTED		
Quantity sampled	1 NO	Use	Asbestos Insulating Board

Material assessment

Product type	AIB,Textiles,Rope,etc(see Use) (2)
Damage/deterioration	Low damage (1)
Surface treatment	Unsealed AIB,enc Lagging&Spray (2)
Asbestos type	Crocidolite (3)

Priority assessment

Type of activity	Low disturbance activiy (1)
Location	Rooms up to 100m2 (2)
Accessibility	Occasionally disturbed (1)
Extent	Small amounts or items (0)

Occupants using space 1 to 3 (1)

Frequency of use Daily (3)

Average time of use >1 to <3 hours (1)

Type of maintenance Low disturbance (1)

Frequency of maintenance <1 per year (1)

Material score 8

Priority score 5

Banding **Removed**

No access. Presumed to contain Insulation board and gaskets.
Presumed crocidolite asbestos

Asbestos Register Detail

Site 01038 : Bracken Lane Primary and Nursery



Reference	161	Sample number	01038-01-07-P01
Survey date	17-Jul-17	Presumed	No
Building :	01 00 Main School		
Floor		Room	007 Staff Room
Location	WALL MOUNTED		
Quantity sampled	1 NO	Use	Asbestos Insulating Board

Material assessment

Product type	AIB, Textiles, Rope, etc (see Use) (2)
Damage/deterioration	High damage (3)
Surface treatment	Unsealed AIB, enc Lagging & Spray (2)
Asbestos type	Crocidolite (3)

Priority assessment

Type of activity	Low disturbance activity (1)
Location	Rooms up to 100m2 (2)
Accessibility	Occasionally disturbed (1)
Extent	Small amounts or items (0)

Occupants using space	1 to 3 (1)
-----------------------	------------

Frequency of use	Daily (3)
------------------	-----------

Average time of use	>1 to <3 hours (1)
---------------------	--------------------

Type of maintenance	Low disturbance (1)
---------------------	---------------------

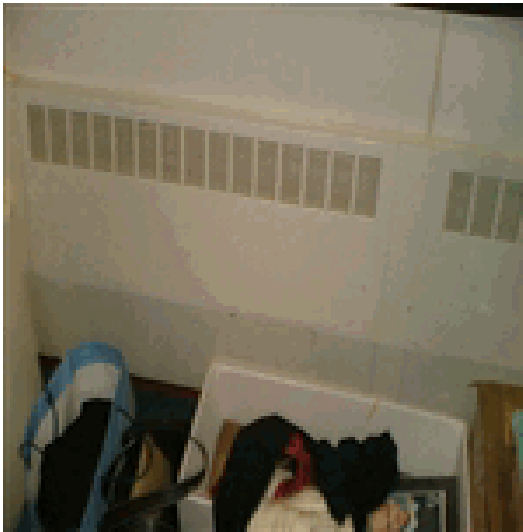
Frequency of maintenance	>1 per year (2)
--------------------------	-----------------

Material score	10
----------------	----

Priority score	6
----------------	---

Banding	Removed
---------	---------

jgcheck28/05/2010



Reference	162	Sample number	01038-01-06-P01
Survey date	17-Jul-17	Presumed	No
Building :	01 00 Main School		
Floor		Room	006 Office
Location	WALL MOUNTED		
Quantity sampled	1 NO	Use	Asbestos Insulating Board

Material assessment

Product type	AIB, Textiles, Rope, etc (see Use) (2)
Damage/deterioration	High damage (3)
Surface treatment	Unsealed AIB, enc Lagging & Spray (2)
Asbestos type	Crocidolite (3)

Priority assessment

Type of activity	Low disturbance activity (1)
Location	Rooms up to 100m2 (2)
Accessibility	Occasionally disturbed (1)
Extent	Small amounts or items (0)

Occupants using space	1 to 3 (1)
-----------------------	------------

Frequency of use	Daily (3)
------------------	-----------

Average time of use	>1 to <3 hours (1)
---------------------	--------------------

Type of maintenance	Low disturbance (1)
---------------------	---------------------

Frequency of maintenance	>1 per year (2)
--------------------------	-----------------

Material score	10
----------------	----

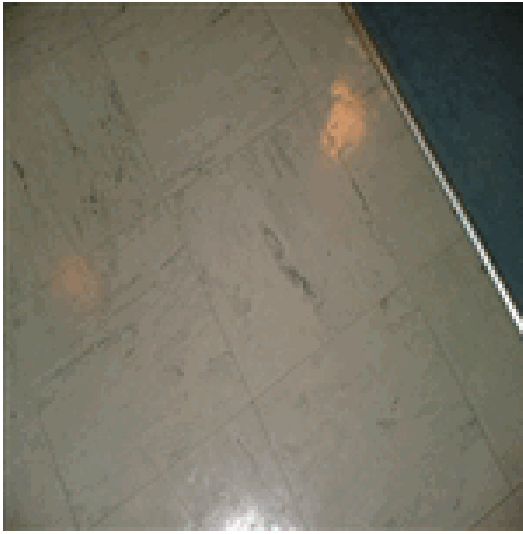
Priority score	6
----------------	---

Banding	Removed
---------	---------

jgcheck03/06/2010

Asbestos Register Detail

Site 01038 : Bracken Lane Primary and Nursery



Reference	163	Sample number	01038-01-05-01
Survey date	17-Jul-17	Presumed	No
Building :	01 00 Main School		
Floor		Room	005 Circulation
Location	GREY FLOOR TILES		
Quantity sampled	10M2	Use	Flooring
Material assessment			
Product type	Asb-Reinfd comps,etc (see Use) (1)		
Damage/deterioration	Good condition (0)		
Surface treatment	Composite materials (0)		
Asbestos type	Not asbestos (0)		

No Asbestos Detected

Possibly still located under blue carpet floor covering.

Material score

Banding



Reference	164	Sample number	01038-01-05-02
Survey date	17-Jul-17	Presumed	No
Building :	01 00 Main School		
Floor		Room	005 Circulation
Location	BROWN PATTERN FLOOR TILE		
Quantity sampled	1.5M2	Use	Flooring
Material assessment			
Product type	Asb-Reinfd comps,etc (see Use) (1)		
Damage/deterioration	Good condition (0)		
Surface treatment	Composite materials (0)		
Asbestos type	Not asbestos (0)		

No Asbestos Detected

Possibly still located under blue carpet floor covering.

Material score

Banding

Asbestos Register Detail

Site 01038 : Bracken Lane Primary and Nursery



Reference	165	Sample number	01038-01-05-03
Survey date	17-Jul-17	Presumed	No
Building :	01 00 Main School		
Floor		Room	005 Circulation
Location	WHITE FLOOR TILE		
Quantity sampled	1.5M2	Use	Flooring
Material assessment			
Product type	Asb-Reinfd comps,etc (see Use) (1)		
Damage/deterioration	Good condition (0)		
Surface treatment	Composite materials (0)		
Asbestos type	Not asbestos (0)		

No Asbestos Detected

Possibly still located under blue carpet floor covering.

Material score

Banding



Reference	166	Sample number	01038-01-04-P01
Survey date	17-Jul-17	Presumed	Yes
Building :	01 00 Main School		
Floor		Room	004 Caretaker
Location	WALL MOUNTED		
Quantity sampled	1 NO	Use	Asbestos Insulating Board
Material assessment			
Product type	AIB,Textiles,Rope,etc(see Use) (2)		
Damage/deterioration	Low damage (1)		
Surface treatment	Unsealed AIB,enc Lagging&Spray (2)		
Asbestos type	Crocidolite (3)		

Priority assessment

Type of activity	Low disturbance activiy (1)
Location	Rooms up to 100m2 (2)
Accessibility	Occasionally disturbed (1)
Extent	Small amounts or items (0)

Occupants using space	1 to 3 (1)
Frequency of use	Daily (3)
Average time of use	>1 to <3 hours (1)
Type of maintenance	Low disturbance (1)
Frequency of maintenance	<1 per year (1)

Material score	8
Priority score	5
Banding	Removed

Presumed crocidolite asbestos. No access. Presumed to contain Insulation board and gaskets

Asbestos Register Detail

Site 01038 : Bracken Lane Primary and Nursery



Monitor & Manage

Presumed crocidolite asbestos. Presume to contain Insulation board, rope seals and flash pads

Reference	167	Sample number	01038-01-03-P01
Survey date	17-Jul-17	Presumed	Yes
Building :	01 00 Main School		
Floor		Room	003 Meter
Location	WALL MOUNTED		
Quantity sampled	1 NO	Use	Asbestos Insulating Board

Material assessment

Product type	AIB, Textiles, Rope, etc (see Use) (2)
Damage/deterioration	Low damage (1)
Surface treatment	Unsealed AIB, enc Lagging & Spray (2)
Asbestos type	Crocidolite (3)

Priority assessment

Type of activity	Periodic disturbance activity (2)
Location	Rooms up to 100m2 (2)
Accessibility	Occasionally disturbed (1)
Extent	Small amounts or items (0)

Occupants using space	None (0)
Frequency of use	Daily (3)
Average time of use	<1 hour (0)
Type of maintenance	Low disturbance (1)
Frequency of maintenance	<1 per year (1)

Material score	8
Priority score	5
Banding	Low



Reference	168	Sample number	01038-01-02-P01
Survey date	17-Jul-17	Presumed	Yes
Building :	01 00 Main School		
Floor		Room	002 Staff WC
Location	WALL MOUNTED		
Quantity sampled	1 NO	Use	Asbestos Insulating Board

Material assessment

Product type	AIB, Textiles, Rope, etc (see Use) (2)
Damage/deterioration	Low damage (1)
Surface treatment	Unsealed AIB, enc Lagging & Spray (2)
Asbestos type	Crocidolite (3)

Priority assessment

Type of activity	Low disturbance activity (1)
Location	Rooms up to 100m2 (2)
Accessibility	Occasionally disturbed (1)
Extent	Small amounts or items (0)

Occupants using space	1 to 3 (1)
Frequency of use	Daily (3)
Average time of use	>1 to <3 hours (1)
Type of maintenance	Low disturbance (1)
Frequency of maintenance	<1 per year (1)

Material score	8
Priority score	5
Banding	Removed

Asbestos Register Detail

Site 01038 : Bracken Lane Primary and Nursery



Reference **169** Sample number **01038-01-01-P01**
 Survey date **17-Jul-17** Presumed **No**
 Building : **01 00 Main School**
 Floor Room 001 Circulation
 Location WALL MOUNTED
 Quantity sampled 1 NO Use Asbestos Insulating Board

Material assessment

Product type AIB, Textiles, Rope, etc (see Use) (2)
 Damage/deterioration High damage (3)
 Surface treatment Unsealed AIB, enc Lagging & Spray (2)
 Asbestos type Crocidolite (3)

Priority assessment

Type of activity Low disturbance activity (1)
 Location Rooms up to 100m2 (2)
 Accessibility Occasionally disturbed (1)
 Extent Small amounts or items (0)

Occupants using space 1 to 3 (1)
 Frequency of use Daily (3)
 Average time of use >1 to <3 hours (1)
 Type of maintenance Low disturbance (1)
 Frequency of maintenance >1 per year (2)

Material score **10**
 Priority score **6**
 Banding **Removed**

jgcheck03/06/2010



Reference **178** Sample number **01038-01-15-55**
 Survey date **17-Jul-17** Presumed **No**
 Building : **01 00 Main School**
 Floor G Room 015 Resources
 Location
 Quantity sampled <10m linear Use Asbestos Insulating Board

Material assessment

Product type AIB, Textiles, Rope, etc (0)
 Damage/deterioration Low damage (1)
 Surface treatment Unsealed AIB, enc Lagging & Spray (0)
 Asbestos type Amphibole ex. Crocidolite (2)

Priority assessment

Type of activity Low disturbance activity (0)
 Location Rooms up to 100m2 (2)
 Accessibility Usually inaccessible/unlikely (0)
 Extent <10m2 or 10m pipe run (1)

Occupants using space 1 to 3 (1)
 Frequency of use Daily (3)
 Average time of use <1 hour (0)
 Type of maintenance Minor disturbance (0)
 Frequency of maintenance ACM unlikely to be disturbed (0)

Material score **3**
 Priority score **3**
 Banding **Very Low**

Restrict Access

Asbestos Register Detail

Site 01038 : Bracken Lane Primary and Nursery



Reference 179 Sample number 01038-01-15-56
Survey date 17-Jul-17 Presumed No

Building : 01 00 Main School
Floor G Room 015 Resources
Location
Quantity sampled Use

Material assessment

Product type ()
Damage/deterioration ()
Surface treatment ()
Asbestos type Not asbestos (0)

No Asbestos Detected

Material score

Banding



Reference 180 Sample number 01038-01-15-57
Survey date 17-Jul-17 Presumed No

Building : 01 00 Main School
Floor G Room 015 Resources
Location
Quantity sampled Use

Material assessment

Product type ()
Damage/deterioration ()
Surface treatment ()
Asbestos type Not asbestos (0)

No Asbestos Detected

Material score

Banding

Asbestos Register Detail

Site 01038 : Bracken Lane Primary and Nursery



Restrict Access

Reference	181	Sample number	01038-01-20-58	
Survey date	17-Jul-17	Presumed	No	
Building :	01 00 Main School			
Floor		Room	020 ICT Suite	
Location				
Quantity sampled	<10m2	Use	Asbestos Insulating Board	
Material assessment				
Product type	AIB, Textiles, Rope, etc (0)			
Damage/deterioration	Low damage (1)			
Surface treatment	Unsealed AIB, enc Lagging&Spray (0)			
Asbestos type	Amphibole ex. Crocidolite (2)			
Priority assessment				
Type of activity	Low disturbance activity (0)			
Location	Rooms up to 100m2 (2)			
Accessibility	Usually inaccessible/unlikely (0)			
Extent	<10m2 or 10m pipe run (1)			
Occupants using space	>10 (3)			
Frequency of use	Daily (3)			
Average time of use	>3 to <6 hours (2)		Material score	3
Type of maintenance	Minor disturbance (0)		Priority score	4
Frequency of maintenance	ACM unlikely to be disturbed (0)		Banding	Very Low



No Asbestos Detected

Reference	182	Sample number	01038-01-21-59
Survey date	17-Jul-17	Presumed	No
Building :	01 00 Main School		
Floor	G	Room	029 Office
Location			
Quantity sampled		Use	
Material assessment			
Product type	()		
Damage/deterioration	()		
Surface treatment	()		
Asbestos type	Not asbestos (0)		

Material score

Banding

Asbestos Register Detail

Site 01038 : Bracken Lane Primary and Nursery



Reference 183 Sample number 01038-01-28-60
Survey date 17-Jul-17 Presumed No

Building : 01 00 Main School
Floor G Room 028 Quiet room
Location
Quantity sampled Use

Material assessment
Product type ()
Damage/deterioration ()
Surface treatment ()
Asbestos type Not asbestos (0)

No Asbestos Detected

Material score

Banding



Reference 184 Sample number 01038-01-28-61
Survey date 17-Jul-17 Presumed No

Building : 01 00 Main School
Floor G Room 028 Quiet room
Location
Quantity sampled Use

Material assessment
Product type ()
Damage/deterioration ()
Surface treatment ()
Asbestos type Not asbestos (0)

No Asbestos Detected

Material score

Banding

Asbestos Register Detail

Site 01038 : Bracken Lane Primary and Nursery



Restrict Access

Reference	185	Sample number	01038-01-14-62 SP	
Survey date	17-Jul-17	Presumed	Yes	
Building :	01 00 Main School			
Floor		Room	014 Craft Room	
Location				
Quantity sampled	<10m2	Use	Asbestos Insulating Board	
Material assessment				
Product type	AIB,Textiles,Rope,etc (0)			
Damage/deterioration	Low damage (1)			
Surface treatment	Unsealed AIB,enc Lagging&Spray (0)			
Asbestos type	Amphibole ex. Crocidolite (2)			
Priority assessment				
Type of activity	Low disturbance activity (0)			
Location	Rooms up to 100m2 (2)			
Accessibility	Usually inaccessible/unlikely (0)			
Extent	<10m2 or 10m pipe run (1)			
Occupants using space	>10 (3)			
Frequency of use	Daily (3)			
Average time of use	>3 to<6 hours (2)		Material score	3
Type of maintenance	Minor disturbance (0)		Priority score	4
Frequency of maintenance	ACM unlikely to be disturbed (0)		Banding	Very Low



Restrict Access

Reference	186	Sample number	01038-01-24-63	
Survey date	17-Jul-17	Presumed	No	
Building :	01 00 Main School			
Floor		Room	024 Circulation	
Location				
Quantity sampled	>10m2 <50m2		Use	Asbestos Insulating Board
Material assessment				
Product type	AIB,Textiles,Rope,etc (0)			
Damage/deterioration	Low damage (1)			
Surface treatment	Unsealed AIB,enc Lagging&Spray (0)			
Asbestos type	Amphibole ex. Crocidolite (2)			
Priority assessment				
Type of activity	Low disturbance activity (0)			
Location	Rooms up to 100m2 (2)			
Accessibility	Usually inaccessible/unlikely (0)			
Extent	>10m2 to <50m2 or >10m to <50m (2)			
Occupants using space	4 to 10 (2)			
Frequency of use	Daily (3)			
Average time of use	>1 to <3 hours (1)		Material score	3
Type of maintenance	Minor disturbance (0)		Priority score	4
Frequency of maintenance	ACM unlikely to be disturbed (0)		Banding	Very Low

Asbestos Register Detail

Site 01038 : Bracken Lane Primary and Nursery



Restrict Access

Reference	187	Sample number	01038-01-24-64	
Survey date	17-Jul-17	Presumed	No	
Building :	01 00 Main School			
Floor		Room	024 Circulation	
Location				
Quantity sampled	<10m2	Use	Asbestos Insulating Board	
Material assessment				
Product type	AIB, Textiles, Rope, etc (0)			
Damage/deterioration	Low damage (1)			
Surface treatment	Unsealed AIB, enc Lagging&Spray (0)			
Asbestos type	Amphibole ex. Crocidolite (2)			
Priority assessment				
Type of activity	Low disturbance activity (0)			
Location	Rooms up to 100m2 (2)			
Accessibility	Usually inaccessible/unlikely (0)			
Extent	<10m2 or 10m pipe run (1)			
Occupants using space	4 to 10 (2)			
Frequency of use	Weekly (2)			
Average time of use	>1 to <3 hours (1)		Material score	3
Type of maintenance	Minor disturbance (0)		Priority score	3
Frequency of maintenance	ACM unlikely to be disturbed (0)		Banding	Very Low



No Asbestos Detected

Reference	188	Sample number	01038-01-26-65
Survey date	17-Jul-17	Presumed	No
Building :	01 00 Main School		
Floor		Room	026 Pupil WC
Location			
Quantity sampled		Use	
Material assessment			
Product type	()		
Damage/deterioration	()		
Surface treatment	()		
Asbestos type	Not asbestos (0)		

Material score

Banding

Asbestos Register Detail

Site 01038 : Bracken Lane Primary and Nursery



Reference	189	Sample number	01038-01-22-66
Survey date	17-Jul-17	Presumed	No
Building :	01 00 Main School		
Floor		Room	022 Classroom
Location		Use	Asbestos Insulating Board
Quantity sampled	<10m2		

Material assessment

Product type	AIB, Textiles, Rope, etc (0)
Damage/deterioration	Low damage (1)
Surface treatment	Unsealed AIB, enc Lagging & Spray (0)
Asbestos type	Amphibole ex. Crocidolite (2)

Priority assessment

Type of activity	Low disturbance activity (0)
Location	Rooms up to 100m2 (2)
Accessibility	Usually inaccessible/unlikely (0)
Extent	<10m2 or 10m pipe run (1)

Occupants using space	>10 (3)
Frequency of use	Daily (3)
Average time of use	>6 hours (3)
Type of maintenance	Minor disturbance (0)
Frequency of maintenance	ACM unlikely to be disturbed (0)

Material score	3
Priority score	4
Banding	Very Low

Restrict Access



Reference	190	Sample number	01038-01-22-67
Survey date	17-Jul-17	Presumed	No
Building :	01 00 Main School		
Floor		Room	022 Classroom
Location		Use	
Quantity sampled			

Material assessment

Product type	()
Damage/deterioration	()
Surface treatment	()
Asbestos type	Not asbestos (0)

No Asbestos Detected

Material score

Banding

Asbestos Register Detail

Site 01038 : Bracken Lane Primary and Nursery



Reference 191 Sample number 01038-01-22-68
Survey date 17-Jul-17 Presumed No

Building : 01 00 Main School
Floor Room 022 Classroom
Location
Quantity sampled Use

Material assessment
Product type ()
Damage/deterioration ()
Surface treatment ()
Asbestos type Not asbestos (0)

No Asbestos Detected

Material score

Banding



Reference 192 Sample number 01038-01-23-69
Survey date 17-Jul-17 Presumed No

Building : 01 00 Main School
Floor G Room 023 Quiet room
Location
Quantity sampled Use

Material assessment
Product type ()
Damage/deterioration ()
Surface treatment ()
Asbestos type Not asbestos (0)

No Asbestos Detected

Material score

Banding

Asbestos Register Detail

Site 01038 : Bracken Lane Primary and Nursery



Restrict Access

Reference	193	Sample number	01038-01-29-70SP
Survey date	17-Jul-17	Presumed	Yes
Building :	01 00 Main School		
Floor	G	Room	029 Office
Location			
Quantity sampled	>10m2 ,50m2	Use	Asbestos Insulating Board

Material assessment

Product type	AIB, Textiles, Rope, etc (0)
Damage/deterioration	Low damage (1)
Surface treatment	Unsealed AIB, enc Lagging & Spray (0)
Asbestos type	Amphibole ex. Crocidolite (2)

Priority assessment

Type of activity	Low disturbance activity (0)
Location	Rooms up to 100m2 (2)
Accessibility	Usually inaccessible/unlikely (0)
Extent	>10m2 to <50m2 or >10m to <50m (2)
Occupants using space	1 to 3 (1)
Frequency of use	Daily (3)
Average time of use	>6 hours (3)
Type of maintenance	Minor disturbance (0)
Frequency of maintenance	ACM unlikely to be disturbed (0)
Material score	3
Priority score	4
Banding	Very Low



No Asbestos Detected

Reference	194	Sample number	01038-01-30-71
Survey date	17-Jul-17	Presumed	No
Building :	01 00 Main School		
Floor	G	Room	030 Classroom
Location			
Quantity sampled		Use	

Material assessment

Product type	()
Damage/deterioration	()
Surface treatment	()
Asbestos type	Not asbestos (0)

Material score

Banding

Asbestos Register Detail

Site 01038 : Bracken Lane Primary and Nursery



Reference	195	Sample number	01038-01-45-72
Survey date	17-Jul-17	Presumed	No
Building :	01 00 Main School		
Floor	G	Room	045 Quiet room
Location			
Quantity sampled		Use	
Material assessment			
Product type	()		
Damage/deterioration	()		
Surface treatment	()		
Asbestos type	Not asbestos (0)		

No Asbestos Detected

Material score

Banding



Reference	196	Sample number	01038-01-42-73
Survey date	17-Jul-17	Presumed	No
Building :	01 00 Main School		
Floor		Room	042 Classroom
Location			
Quantity sampled	>10m2 <50m2	Use	Asbestos Insulating Board
Material assessment			
Product type	AIB, Textiles, Rope, etc (0)		
Damage/deterioration	Low damage (1)		
Surface treatment	Unsealed AIB, enc Lagging & Spray (0)		
Asbestos type	Amphibole ex. Crocidolite (2)		

Restrict Access

Priority assessment	
Type of activity	Low disturbance activity (0)
Location	Rooms up to 100m2 (2)
Accessibility	Usually inaccessible/unlikely (0)
Extent	>10m2 to <50m2 or >10m to <50m (2)
Occupants using space	>10 (3)
Frequency of use	Daily (3)
Average time of use	>6 hours (3)
Type of maintenance	Minor disturbance (0)
Frequency of maintenance	ACM unlikely to be disturbed (0)

Material score	3
Priority score	5
Banding	Very Low

Asbestos Register Detail

Site 01038 : Bracken Lane Primary and Nursery



Restrict Access

Reference	197	Sample number	01038-01-42-74	
Survey date	17-Jul-17	Presumed	No	
Building :	01 00 Main School			
Floor		Room	042 Classroom	
Location				
Quantity sampled	>10m2 <50m2	Use	Asbestos Insulating Board	
Material assessment				
Product type	AIB, Textiles, Rope, etc (0)			
Damage/deterioration	Low damage (1)			
Surface treatment	Unsealed AIB, enc Lagging&Spray (0)			
Asbestos type	Amphibole ex. Crocidolite (2)			
Priority assessment				
Type of activity	Low disturbance activity (0)			
Location	Rooms up to 100m2 (2)			
Accessibility	Usually inaccessible/unlikely (0)			
Extent	>10m2 to <50m2 or >10m to <50m (2)			
Occupants using space	>10 (3)			
Frequency of use	Daily (3)			
Average time of use	>6 hours (3)		Material score	3
Type of maintenance	Minor disturbance (0)		Priority score	5
Frequency of maintenance	ACM unlikely to be disturbed (0)		Banding	Very Low



No Asbestos Detected

Reference	198	Sample number	01038-01-500-75
Survey date	17-Jul-17	Presumed	No
Building :	01 00 Main School		
Floor		Room	000 External/Fixtures
Location			
Quantity sampled		Use	
Material assessment			
Product type	()		
Damage/deterioration	()		
Surface treatment	()		
Asbestos type	Not asbestos (0)		

Material score

Banding

Asbestos Register Detail

Site 01038 : Bracken Lane Primary and Nursery



Reference	199	Sample number	01038-01-500-76
Survey date	17-Jul-17	Presumed	No
Building :	01 00 Main School		
Floor		Room	000 External/Fixtures
Location			
Quantity sampled		Use	
Material assessment			
Product type	()		
Damage/deterioration	()		
Surface treatment	()		
Asbestos type	Not asbestos (0)		

No Asbestos Detected

Material score

Banding



Reference	200	Sample number	01038-01-500-77
Survey date	17-Jul-17	Presumed	No
Building :	01 00 Main School		
Floor		Room	001 Circulation
Location			
Quantity sampled		Use	
Material assessment			
Product type	()		
Damage/deterioration	()		
Surface treatment	()		
Asbestos type	Not asbestos (0)		

No Asbestos Detected

Material score

Banding

Asbestos Register Detail

Site 01038 : Bracken Lane Primary and Nursery



Reference 201 Sample number 01038-01-52-78
Survey date 17-Jul-17 Presumed No

Building : 01 00 Main School
Floor G Room 052 Other
Location
Quantity sampled Use

Material assessment
Product type ()
Damage/deterioration ()
Surface treatment ()
Asbestos type Not asbestos (0)

No Asbestos Detected

Material score

Banding



Reference 202 Sample number 01038-01-42-79
Survey date 17-Jul-17 Presumed No

Building : 01 00 Main School
Floor Room 042 Classroom
Location
Quantity sampled Use

Material assessment
Product type ()
Damage/deterioration ()
Surface treatment ()
Asbestos type Not asbestos (0)

No Asbestos Detected

Material score

Banding

Asbestos Register Detail

Site 01038 : Bracken Lane Primary and Nursery



No Asbestos Detected

Reference	203	Sample number	01038-01-48-80
Survey date	17-Jul-17	Presumed	No
Building :	01 00 Main School		
Floor		Room	048 Staff WC
Location			
Quantity sampled		Use	
Material assessment			
Product type	()		
Damage/deterioration	()		
Surface treatment	()		
Asbestos type	Not asbestos (0)		

Material score

Banding



Restrict Access

Reference	204	Sample number	01038-01-01-81
Survey date	17-Jul-17	Presumed	No
Building :	01 00 Main School		
Floor		Room	002 Staff WC
Location			
Quantity sampled	>10m2 <50m2	Use	Asbestos Insulating Board
Material assessment			
Product type	AIB, Textiles, Rope, etc (0)		
Damage/deterioration	Low damage (1)		
Surface treatment	Unsealed AIB, enc Lagging & Spray (0)		
Asbestos type	Amphibole ex. Crocidolite (2)		

Priority assessment	
Type of activity	Low disturbance activity (0)
Location	Rooms up to 100m2 (2)
Accessibility	Usually inaccessible/unlikely (0)
Extent	>10m2 to <50m2 or >10m to <50m (2)

Occupants using space	4 to 10 (2)
Frequency of use	Daily (3)
Average time of use	>1 to <3 hours (1)
Type of maintenance	Minor disturbance (0)
Frequency of maintenance	ACM unlikely to be disturbed (0)

Material score	3
Priority score	4
Banding	Very Low

Asbestos Register Detail

Site 01038 : Bracken Lane Primary and Nursery



Reference 205 Sample number 01038-01-08-82
Survey date 17-Jul-17 Presumed No

Building : 01 00 Main School
Floor G Room 008 Nursery
Location
Quantity sampled Use

Material assessment
Product type ()
Damage/deterioration ()
Surface treatment ()
Asbestos type Not asbestos (0)

No Asbestos Detected

Material score

Banding



Reference 206 Sample number 01038-01-08-83
Survey date 17-Jul-17 Presumed No

Building : 01 00 Main School
Floor G Room 008 Nursery
Location
Quantity sampled Use

Material assessment
Product type ()
Damage/deterioration ()
Surface treatment ()
Asbestos type Not asbestos (0)

No Asbestos Detected

Material score

Banding

Asbestos Register Detail

Site 01038 : Bracken Lane Primary and Nursery



Restrict Access

Reference	207	Sample number	01038-01-11-84	
Survey date	17-Jul-17	Presumed	No	
Building :	01 00 Main School			
Floor	G	Room	011 Pupil WC	
Location				
Quantity sampled	<10m2	Use	Asbestos Insulating Board	
Material assessment				
Product type	AIB,Textiles,Rope,etc (0)			
Damage/deterioration	Low damage (1)			
Surface treatment	Unsealed AIB,enc Lagging&Spray (0)			
Asbestos type	Amphibole ex. Crocidolite (2)			
Priority assessment				
Type of activity	Low disturbance activity (0)			
Location	Rooms up to 100m2 (2)			
Accessibility	Usually inaccessible/unlikely (0)			
Extent	<10m2 or 10m pipe run (1)			
Occupants using space	1 to 3 (1)			
Frequency of use	Daily (3)			
Average time of use	>1 to <3 hours (1)		Material score	3
Type of maintenance	Minor disturbance (0)		Priority score	3
Frequency of maintenance	ACM unlikely to be disturbed (0)		Banding	Very Low



No Asbestos Detected

Reference	208	Sample number	01038-01-13-85
Survey date	17-Jul-17	Presumed	No
Building :	01 00 Main School		
Floor		Room	013 Hall
Location			
Quantity sampled		Use	
Material assessment			
Product type	()		
Damage/deterioration	()		
Surface treatment	()		
Asbestos type	Not asbestos (0)		

Material score

Banding

Asbestos Register Detail

Site 01038 : Bracken Lane Primary and Nursery



Reference 209 Sample number 01038-01-13-86
Survey date 17-Jul-17 Presumed No

Building : 01 00 Main School
Floor Room 013 Hall
Location
Quantity sampled Use

Material assessment
Product type ()
Damage/deterioration ()
Surface treatment ()
Asbestos type Not asbestos (0)

No Asbestos Detected

Material score

Banding



Reference 210 Sample number 01038-01-500-87
Survey date 17-Jul-17 Presumed No

Building : 01 00 Main School
Floor Room 000 External/Fixtures
Location
Quantity sampled Use

Material assessment
Product type ()
Damage/deterioration ()
Surface treatment ()
Asbestos type Not asbestos (0)

No Asbestos Detected

Material score

Banding

Asbestos Register Detail

Site 01038 : Bracken Lane Primary and Nursery



Reference	211	Sample number	01038-01-500-89
Survey date	17-Jul-17	Presumed	No
Building :	01 00 Main School		
Floor		Room	000 External/Fixtures
Location		Use	
Quantity sampled			
Material assessment			
Product type	()		
Damage/deterioration	()		
Surface treatment	()		
Asbestos type	Not asbestos (0)		

No Asbestos Detected

Material score

Banding



Reference	212	Sample number	01038-01-500-90
Survey date	17-Jul-17	Presumed	No
Building :	01 00 Main School		
Floor		Room	000 External/Fixtures
Location		Use	
Quantity sampled			
Material assessment			
Product type	()		
Damage/deterioration	()		
Surface treatment	()		
Asbestos type	Not asbestos (0)		

No Asbestos Detected

Material score

Banding

Asbestos Register Detail

Site 01038 : Bracken Lane Primary and Nursery



Reference	213	Sample number	01038-01-500-91
Survey date	17-Jul-17	Presumed	No
Building :	01 00 Main School		
Floor		Room	000 External/Fixtures
Location			
Quantity sampled		Use	
Material assessment			
Product type	()		
Damage/deterioration	()		
Surface treatment	()		
Asbestos type	Not asbestos (0)		

No Asbestos Detected

Material score

Banding



Reference	214	Sample number	01038-01-37-101
Survey date	17-Jul-17	Presumed	No
Building :	01 00 Main School		
Floor	G	Room	037 Classroom
Location			
Quantity sampled		Use	
Material assessment			
Product type	()		
Damage/deterioration	()		
Surface treatment	()		
Asbestos type	Not asbestos (0)		

No Asbestos Detected

Material score

Banding

Asbestos Register Detail

Site 01038 : Bracken Lane Primary and Nursery



Reference 215 Sample number 01038-01-37-102
Survey date 17-Jul-17 Presumed No

Building : 01 00 Main School
Floor G Room 037 Classroom
Location
Quantity sampled Use

Material assessment
Product type ()
Damage/deterioration ()
Surface treatment ()
Asbestos type Not asbestos (0)

No Asbestos Detected

Material score

Banding



Reference 216 Sample number 01038-01-37-103
Survey date 17-Jul-17 Presumed No

Building : 01 00 Main School
Floor G Room 037 Classroom
Location
Quantity sampled Use

Material assessment
Product type ()
Damage/deterioration ()
Surface treatment ()
Asbestos type Not asbestos (0)

No Asbestos Detected

Material score

Banding

Asbestos Register Detail

Site 01038 : Bracken Lane Primary and Nursery



Reference 217 Sample number 01038-01-41-104
Survey date 17-Jul-17 Presumed No

Building : 01 00 Main School
Floor G Room 041 Quiet room
Location
Quantity sampled Use

Material assessment
Product type ()
Damage/deterioration ()
Surface treatment ()
Asbestos type Not asbestos (0)

No Asbestos Detected

Material score

Banding



Reference 218 Sample number 01038-01-39-105
Survey date 17-Jul-17 Presumed No

Building : 01 00 Main School
Floor G Room 039 Quiet room
Location
Quantity sampled Use

Material assessment
Product type ()
Damage/deterioration ()
Surface treatment ()
Asbestos type Not asbestos (0)

No Asbestos Detected

Material score

Banding

Asbestos Register Detail

Site 01038 : Bracken Lane Primary and Nursery



Reference 219 Sample number 01038-01-39-106
Survey date 17-Jul-17 Presumed No

Building : 01 00 Main School
Floor G Room 039 Quiet room
Location
Quantity sampled Use

Material assessment

Product type ()
Damage/deterioration ()
Surface treatment ()
Asbestos type Not asbestos (0)

No Asbestos Detected

Material score

Banding



Reference 220 Sample number 01038-01-34-107
Survey date 17-Jul-17 Presumed No

Building : 01 00 Main School
Floor Room 034 Circulation
Location
Quantity sampled Use

Material assessment

Product type ()
Damage/deterioration ()
Surface treatment ()
Asbestos type Not asbestos (0)

No Asbestos Detected

Material score

Banding

Asbestos Register Detail

Site 01038 : Bracken Lane Primary and Nursery



Reference 221 Sample number 01038-01-34-108
Survey date 17-Jul-17 Presumed No

Building : 01 00 Main School
Floor Room 034 Circulation
Location
Quantity sampled Use

Material assessment
Product type ()
Damage/deterioration ()
Surface treatment ()
Asbestos type Not asbestos (0)

No Asbestos Detected

Material score

Banding

Reference 93 Sample number 01038-02-01-X
Survey date 17-Jul-17 Presumed No
Building : 02 00 Garage Store
Floor Room
Location
Quantity sampled Use No asbestos detected

Material assessment
Product type ()
Damage/deterioration ()
Surface treatment ()
Asbestos type Not asbestos (0)

No Asbestos Detected

No ACM's suspected (MVH May 2012)

Material score

Banding

Asbestos Register Detail

Site 01038 : Bracken Lane Primary and Nursery



Reference	86	Sample number	01038-50-04-04
Survey date	17-Jul-17	Presumed	No
Building :	50 00 Catering Services		
Floor		Room	004 Kitchen
Location	CEILING TILES, UPRISER		
Quantity sampled	8M2	Use	Asbestos Insulating Board

Material assessment

Product type	AIB, Textiles, Rope, etc (see Use) (2)
Damage/deterioration	Good condition (0)
Surface treatment	Enc Lagging&Sprays, AIB, etc (1)
Asbestos type	Amphibole ex. Crocidolite (2)

Priority assessment

Type of activity	Low disturbance activity (1)
Location	Rooms up to 100m2 (2)
Accessibility	Occasionally disturbed (1)
Extent	<10m2 or 10m pipe run (1)

Occupants using space 1 to 3 (1)

Frequency of use Daily (3)

Average time of use >3 to <6 hours (2)

Type of maintenance Medium disturbance (2)

Frequency of maintenance <1 per year (1)

Material score	5
Priority score	6
Banding	Low

Monitor & Manage

Amosite asbestos



Reference	87	Sample number	01038-50-03-03
Survey date	17-Jul-17	Presumed	No
Building :	50 00 Catering Services		
Floor		Room	003 Office
Location	CEILING TILES		
Quantity sampled	6M2	Use	Asbestos Insulating Board

Material assessment

Product type	AIB, Textiles, Rope, etc (see Use) (2)
Damage/deterioration	Good condition (0)
Surface treatment	Enc Lagging&Sprays, AIB, etc (1)
Asbestos type	Amphibole ex. Crocidolite (2)

Priority assessment

Type of activity	Low disturbance activity (1)
Location	Rooms up to 100m2 (2)
Accessibility	Occasionally disturbed (1)
Extent	<10m2 or 10m pipe run (1)

Occupants using space 1 to 3 (1)

Frequency of use Daily (3)

Average time of use >3 to <6 hours (2)

Type of maintenance Medium disturbance (2)

Frequency of maintenance <1 per year (1)

Material score	5
Priority score	6
Banding	Low

Monitor & Manage

Amosite asbestos

Asbestos Register Detail

Site 01038 : Bracken Lane Primary and Nursery



Reference **88** Sample number **01038-50-03-P01**
 Survey date **17-Jul-17** Presumed **Yes**
 Building : **50 00 Catering Services**
 Floor Room 003 Office
 Location WALL MOUNTED
 Quantity sampled 1 NO Use Asbestos Insulating Board

Material assessment

Product type AIB, Textiles, Rope, etc (see Use) (2)
 Damage/deterioration Low damage (1)
 Surface treatment Unsealed AIB, enc Lagging & Spray (2)
 Asbestos type Crocidolite (3)

Priority assessment

Type of activity Low disturbance activity (1)
 Location Rooms up to 100m2 (2)
 Accessibility Occasionally disturbed (1)
 Extent Small amounts or items (0)

Occupants using space 1 to 3 (1)

Frequency of use Daily (3)

Average time of use >3 to <6 hours (2)

Type of maintenance Low disturbance (1)

Frequency of maintenance <1 per year (1)

Material score 8

Priority score 5

Banding **Removed**

Presumed crocidolite asbestos. Presume to contain Insulation board, rope seals and flash pads



Reference **89** Sample number **01038-50-02-02**
 Survey date **17-Jul-17** Presumed **No**
 Building : **50 00 Catering Services**
 Floor Room 002 Staff WC
 Location CEILING TILES, UPRISER
 Quantity sampled 6M2 Use Asbestos Insulating Board

Material assessment

Product type AIB, Textiles, Rope, etc (see Use) (2)
 Damage/deterioration Good condition (0)
 Surface treatment Enc Lagging & Sprays, AIB, etc (1)
 Asbestos type Amphibole ex. Crocidolite (2)

Priority assessment

Type of activity Low disturbance activity (1)
 Location Rooms up to 100m2 (2)
 Accessibility Occasionally disturbed (1)
 Extent <10m2 or 10m pipe run (1)

Occupants using space 1 to 3 (1)

Frequency of use Daily (3)

Average time of use >3 to <6 hours (2)

Type of maintenance Medium disturbance (2)

Frequency of maintenance <1 per year (1)

Material score 5

Priority score 6

Banding **Low**

Monitor & Manage

Amosite asbestos

Asbestos Register Detail

Site 01038 : Bracken Lane Primary and Nursery



Reference	90	Sample number	01038-50-01-P01
Survey date	17-Jul-17	Presumed	No
Building :	50 00 Catering Services		
Floor	G	Room	001 Kitchen
Location	CEILING MOUNTED		
Quantity sampled	1 NO	Use	Asbestos Insulating Board

Material assessment

Product type	AIB, Textiles, Rope, etc (see Use) (2)
Damage/deterioration	High damage (3)
Surface treatment	Unsealed AIB, enc Lagging & Spray (2)
Asbestos type	Crocidolite (3)

Priority assessment

Type of activity	Low disturbance activity (1)
Location	Rooms up to 100m2 (2)
Accessibility	Occasionally disturbed (1)
Extent	>50m2 or >50m pipe run (3)

Occupants using space	4 to 10 (2)
Frequency of use	Daily (3)
Average time of use	>3 to <6 hours (2)
Type of maintenance	Medium disturbance (2)
Frequency of maintenance	<1 per year (1)

Material score	10
Priority score	7
Banding	Removed

jgcheck04/06/2010



Reference	91	Sample number	01038-50-01-01
Survey date	17-Jul-17	Presumed	No
Building :	50 00 Catering Services		
Floor	G	Room	001 Kitchen
Location	CEILING TILES		
Quantity sampled	50M2	Use	Asbestos Insulating Board

Material assessment

Product type	AIB, Textiles, Rope, etc (see Use) (2)
Damage/deterioration	Good condition (0)
Surface treatment	Enc Lagging & Sprays, AIB, etc (1)
Asbestos type	Amphibole ex. Crocidolite (2)

Priority assessment

Type of activity	Low disturbance activity (1)
Location	Rooms up to 100m2 (2)
Accessibility	Occasionally disturbed (1)
Extent	>50m2 or >50m pipe run (3)

Occupants using space	4 to 10 (2)
Frequency of use	Daily (3)
Average time of use	>3 to <6 hours (2)
Type of maintenance	Low disturbance (1)
Frequency of maintenance	<1 per year (1)

Material score	5
Priority score	7
Banding	Low

Monitor & Manage

Amosite asbestos

Asbestos Register Detail

Site 01038 : Bracken Lane Primary and Nursery



Reference 170 Sample number 01038-50-01-51v
Survey date 17-Jul-17 Presumed No

Building : 50 00 Catering Services
Floor G Room 001 Kitchen
Location
Quantity sampled Use

Material assessment
Product type ()
Damage/deterioration ()
Surface treatment ()
Asbestos type Not asbestos (0)

No Asbestos Detected

Material score

Banding



Reference 171 Sample number 01038-50-01-52P
Survey date 17-Jul-17 Presumed Yes
Building : 50 00 Catering Services
Floor G Room 001 Kitchen
Location
Quantity sampled 10m <50m linear Use Asbestos Insulating Board

Material assessment
Product type AIB, Textiles, Rope, etc (0)
Damage/deterioration Low damage (1)
Surface treatment Unsealed AIB, enc Lagging & Spray (0)
Asbestos type Amphibole ex. Crocidolite (2)

Priority assessment
Type of activity Low disturbance activity (0)
Location Rooms up to 100m2 (2)
Accessibility Usually inaccessible/unlikely (0)
Extent >10m2 to <50m2 or >10m to <50m (2)

Occupants using space 4 to 10 (2)
Frequency of use Daily (3)
Average time of use >3 to <6 hours (2)
Type of maintenance Minor disturbance (0)
Frequency of maintenance ACM unlikely to be disturbed (0)

Material score 3
Priority score 4
Banding Very Low

Restrict Access

Asbestos Register Detail

Site 01038 : Bracken Lane Primary and Nursery



Reference 172 Sample number 01038-50-02-53v
Survey date 17-Jul-17 Presumed No

Building : 50 00 Catering Services
Floor Room 002 Staff WC
Location
Quantity sampled Use

Material assessment
Product type ()
Damage/deterioration ()
Surface treatment ()
Asbestos type Not asbestos (0)

No Asbestos Detected

Material score

Banding



Reference 173 Sample number 01038-50-02-52P
Survey date 17-Jul-17 Presumed Yes
Building : 50 00 Catering Services
Floor Room 002 Staff WC
Location
Quantity sampled 10m linear Use Asbestos Insulating Board

Material assessment
Product type AIB, Textiles, Rope, etc (0)
Damage/deterioration Low damage (1)
Surface treatment Unsealed AIB, enc Lagging & Spray (0)
Asbestos type Amphibole ex. Crocidolite (2)

Priority assessment
Type of activity Low disturbance activity (0)
Location Rooms up to 100m2 (2)
Accessibility Usually inaccessible/unlikely (0)
Extent <10m2 or 10m pipe run (1)

Occupants using space 1 to 3 (1)
Frequency of use Daily (3)
Average time of use >1 to <3 hours (1)
Type of maintenance Minor disturbance (0)
Frequency of maintenance ACM unlikely to be disturbed (0)

Material score 3

Priority score 3

Banding Very Low

Asbestos Register Detail

Site 01038 : Bracken Lane Primary and Nursery



Reference	174	Sample number	01038-50-01-51
Survey date	17-Jul-17	Presumed	No
Building :	50 00 Catering Services		
Floor	G	Room	001 Kitchen
Location			
Quantity sampled	<10m2	Use	Asbestos Insulating Board

Material assessment

Product type	AIB, Textiles, Rope, etc (0)
Damage/deterioration	Low damage (1)
Surface treatment	Unsealed AIB, enc Lagging & Spray (0)
Asbestos type	Amphibole ex. Crocidolite (2)

Priority assessment

Type of activity	Low disturbance activity (0)
Location	Rooms up to 100m2 (2)
Accessibility	Usually inaccessible/unlikely (0)
Extent	<10m2 or 10m pipe run (1)

Occupants using space 4 to 10 (2)

Frequency of use Daily (3)

Average time of use >3 to <6 hours (2)

Type of maintenance Minor disturbance (0)

Frequency of maintenance ACM unlikely to be disturbed (0)

Material score 3

Priority score 4

Banding **Removed**



Reference	175	Sample number	01038-50-01-52
Survey date	17-Jul-17	Presumed	No
Building :	50 00 Catering Services		
Floor	G	Room	001 Kitchen
Location			
Quantity sampled	<10m2	Use	Asbestos Insulating Board

Material assessment

Product type	AIB, Textiles, Rope, etc (0)
Damage/deterioration	Low damage (1)
Surface treatment	Unsealed AIB, enc Lagging & Spray (0)
Asbestos type	Amphibole ex. Crocidolite (2)

Priority assessment

Type of activity	Low disturbance activity (0)
Location	Rooms up to 100m2 (2)
Accessibility	Usually inaccessible/unlikely (0)
Extent	<10m2 or 10m pipe run (1)

Occupants using space 4 to 10 (2)

Frequency of use Daily (3)

Average time of use >3 to <6 hours (2)

Type of maintenance Minor disturbance (0)

Frequency of maintenance ACM unlikely to be disturbed (0)

Material score 3

Priority score 4

Banding **Very Low**

Monitor & Manage

Asbestos Register Detail

Site 01038 : Bracken Lane Primary and Nursery



Reference	176	Sample number	01038-50-02-53	
Survey date	17-Jul-17	Presumed	No	
Building :	50 00 Catering Services			
Floor		Room	002 Staff WC	
Location				
Quantity sampled	<10m2	Use	Asbestos Insulating Board	
Material assessment				
Product type	AIB,Textiles,Rope,etc (0)			
Damage/deterioration	Low damage (1)			
Surface treatment	Unsealed AIB,enc Lagging&Spray (0)			
Asbestos type	Amphibole ex. Crocidolite,Chrysotile (2)			
Priority assessment				
Type of activity	()			
Location	Rooms up to 100m2 (2)			
Accessibility	Usually inaccessible/unlikely (0)			
Extent	<10m2 or 10m pipe run (1)			
Occupants using space	1 to 3 (1)			
Frequency of use	Daily (3)			
Average time of use	<1 hour (0)		Material score	3
Type of maintenance	Minor disturbance (0)		Priority score	
Frequency of maintenance	ACM unlikely to be disturbed (0)		Banding	

Monitor & Manage



Reference	177	Sample number	01038-50-01-54
Survey date	17-Jul-17	Presumed	No
Building :	50 00 Catering Services		
Floor	G	Room	001 Kitchen
Location			
Quantity sampled		Use	
Material assessment			
Product type	()		
Damage/deterioration	()		
Surface treatment	()		
Asbestos type	Not asbestos (0)		

No Asbestos Detected

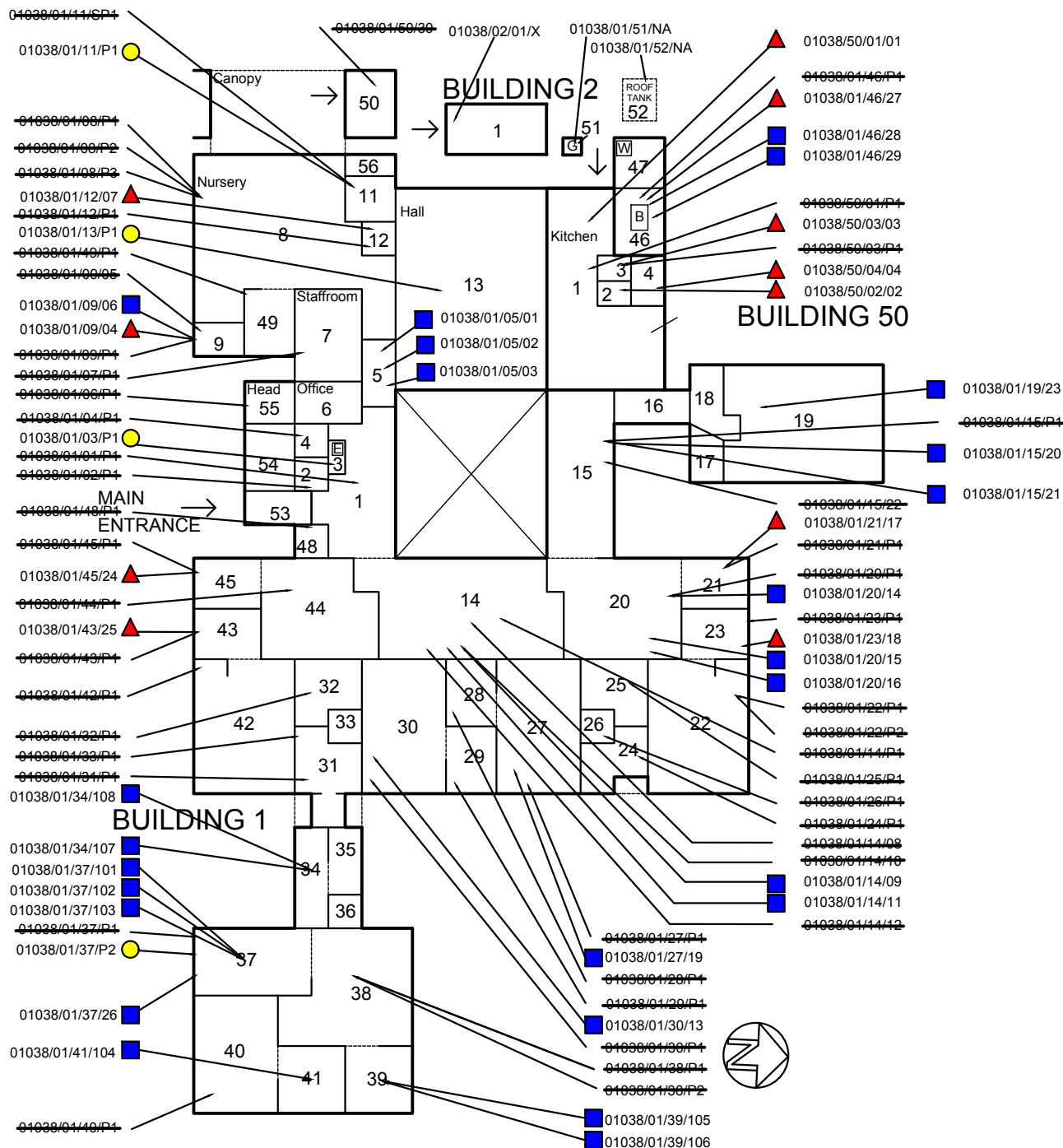
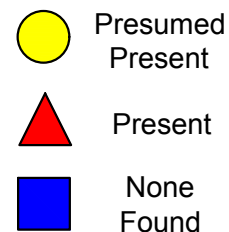
Material score

Banding

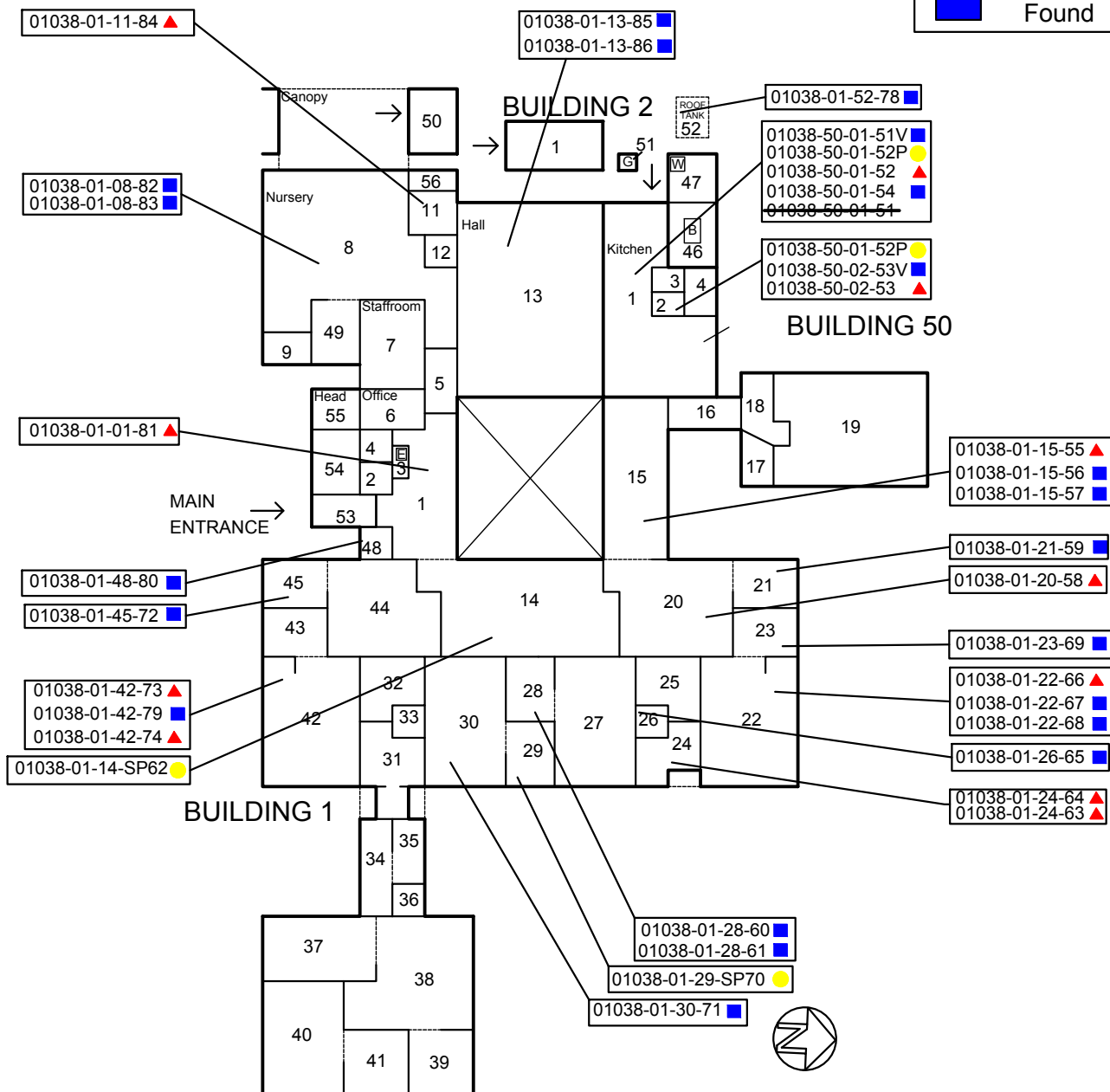
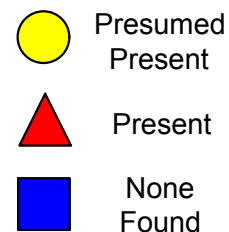
Visit history for this site

This table lists all the visit records held against this site

Visit date	Surveyor	Visit type	Comments
17-Jul-2017	C.J.A.Marriott	Management Survey	Last input Ref; No; 221. Clarification is still being requested from ARC and the analyst employed at the time of the 2012/13 refurbishment regarding the removal of asbestos panels beneath windows in rooms 21,23,43 & 45.
18-Oct-2016	C.J.A.Marriott	Management Survey	
21-Apr-2016	Kevin Roche	R&D	
20-Oct-2015	Kevin Roche	R&D	
25-Jun-2015	Maurice Holmes NCC	Management Survey	Last Input ref 169
3-Nov-2014	Glynn Fairclough	R&D	
22-Jul-2014	Maurice Holmes NCC	Management Survey	
30-May-2014		Re inspection	
24-May-2012	Maurice Holmes	Re inspection	
4-May-2011	C.J.A.Marriott	Management Survey	
9-Mar-2011	C.J.A.Marriott	Management Survey	
6-Dec-2005	Euro Environmental Ltd	Type 2	



Place Department Trent Bridge House, Fox Road, West Bridgford, Nottingham, NG2 6BJ 	Project		Drawn	Date
	BRACKEN LANE PRIMARY		MPJ	Dec'16
	Property No.	Project No.	Ch'kd	Date
	1038			
	Title			Scale
	ASB DRAWING			NTS
© Nottinghamshire County Council	Drawing No.		Rev.	
	ASB.1038 - 1			



Bitumen roof felt/ fascia samples

01038-01-500-75	■
01038-01-500-76	■
01038-01-500-77	■
01038-01-500-87	■
01038-01-500-88	■
01038-01-500-89	■
01038-01-500-90	■
01038-01-500-91	■

Place Department Trent Bridge House, Fox Road, West Bridgford, Nottingham, NG2 6BJ 	Project		Drawn	Date
	BRACKEN LANE PRIMARY		MPJ	Dec'16
	Property No.	Project No.	Ch'kd	Date
	1038			
	Title			Scale
	ASB DRAWING (CLEARWATER)			NTS
© Nottinghamshire County Council	Drawing No.			Rev.
	ASB.1038 - 2 (L2)			