

Nottinghamshire Local Transport Plan Evidence Base Report

4. Crime

4.1 Vehicle Crime

4.1.1 Reported vehicle & pedal cycle crime 2007-2009

Table 16 below shows the rates of vehicle theft and tampering between 2007 and 2009. The figures shown in the table are rates per 1,000 population in the respective year.

All of the districts have seen year on year decreases in the rate of theft of vehicles between 2007 and 2009. Bassetlaw has the highest rate of thefts of vehicles (4.1 per 1,000) although this has dropped from 6.5 per 1,000 in 2007.

All districts have shown year on year decreases in thefts from vehicles between 2007 and 2009 except for Rushcliffe which dropped from 11.0 per 1,000 in 2007 to 6.9 per 1,000 in 2008 but then increased to 7.7 per 1,000 in 2009. The rates of theft from vehicles in Rushcliffe have, however, seen decreases when comparing 2009 with 2007. Mansfield experienced the highest rates of thefts from vehicles both in 2007 (16.8 per 1,000) and in 2009 (9.3 per 1,000) although there has been a steady decrease in the rates of this crime.

The rate of vehicle interference and tampering has reduced in each district with the 2009 rate per 1,000 ranging from 0.8 in Mansfield to 1.3 Bassetlaw.

The rate of thefts of pedal cycles per 1,000 population is highest in Newark & Sherwood (3.2 in 2009) despite decreases in the rates of theft. The rates of thefts of pedal cycles per 1,000 population has, however, increased in Ashfield, from 1.5 in 2007 to 1.7 in 2009 and has shown no improvement in Broxtowe between 2007 and 2009.

Table 16: Rates of vehicle theft and tampering between 2007 and 2009 per 1,000 population

Area	Year	Theft of vehicles	Theft from vehicles	Vehicle interference & tampering	Theft of pedal cycles
Ashfield	2007	3.9	11.2	2.2	1.5
	2008	3.8	10.6	1.8	1.6
	2009	3.3	8.6	1.3	1.7
Bassetlaw	2007	6.5	13.0	2.6	2.5
	2008	4.6	11.7	2.0	2.5
	2009	4.1	8.8	1.3	2.3
Broxtowe	2007	2.7	12.4	2.8	1.5
	2008	2.3	8.6	1.5	1.6
	2009	1.7	7.8	0.9	1.5
Gedling	2007	2.8	8.3	1.8	1.6
	2008	2.6	7.0	1.3	1.3
	2009	2.1	5.4	0.9	1.0
Mansfield	2007	4.5	16.8	2.0	2.2
	2008	3.7	13.7	1.5	1.8
	2009	2.8	9.3	0.8	1.6
Newark & Sherwood	2007	3.0	8.1	2.1	3.8
	2008	2.9	7.3	1.4	4.0
	2009	2.1	4.8	0.9	3.2
Rushcliffe	2007	1.6	11.0	2.6	1.9
	2008	1.3	6.9	1.0	1.7
	2009	1.1	7.7	0.9	1.4

Source: Notts. Police CRMS Data returned to SAU Data Hub

Figure 38 below details the theft from vehicles per 1,000 population in 2009. High levels of thefts from vehicles tend to be concentrated around public car parks, particularly:

Nottinghamshire Local Transport Plan Evidence Base Report

- railway station car parks at Sutton Parkway, Newark and Beeston where vehicles may be left for long periods of time
- local shopping centres in West Bridgford and Mansfield, and
- leisure facilities such as Sherwood Forest and Clumber Park in Bassetlaw and The National Water Sports Centre in Rushcliffe.

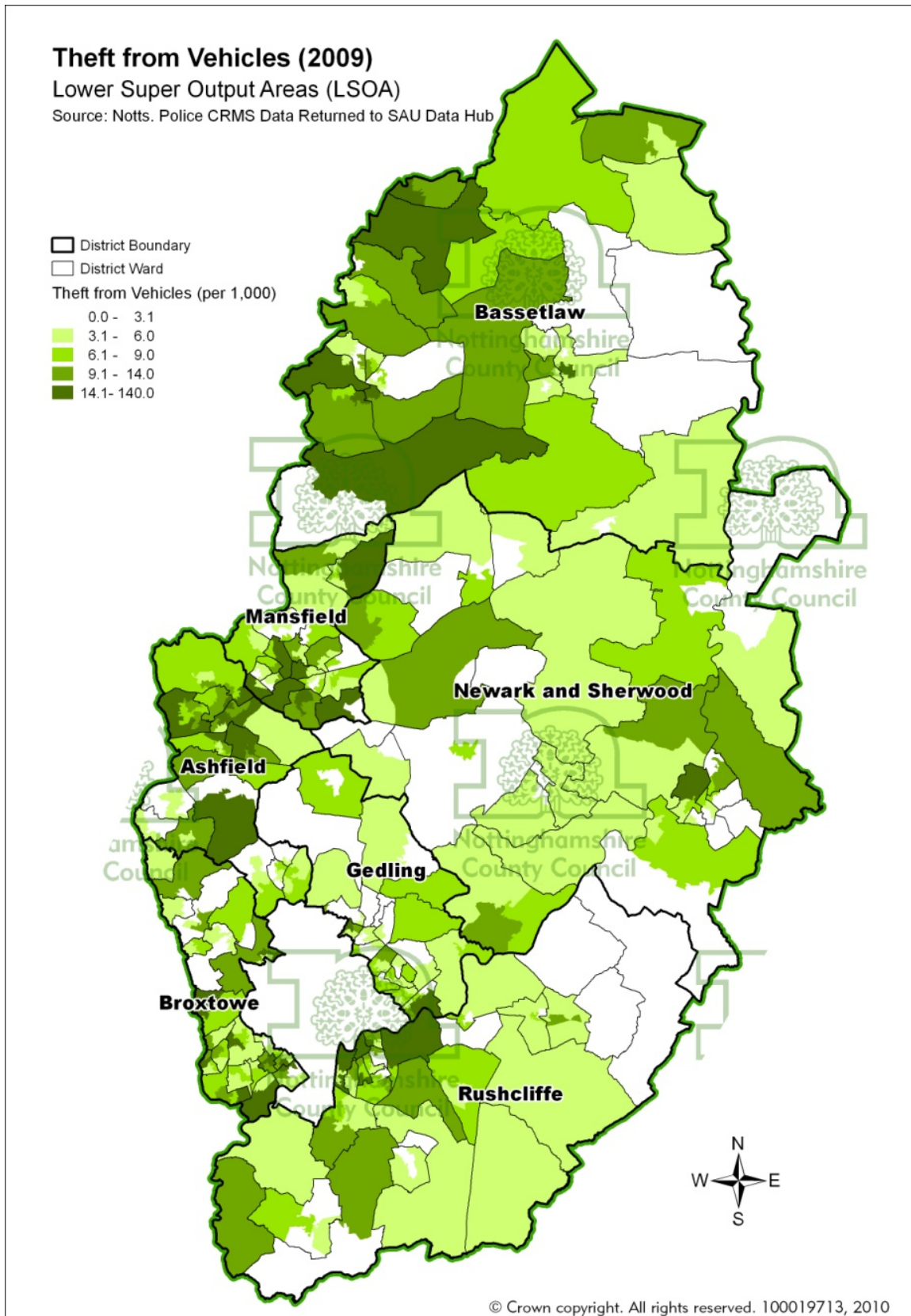


Figure 38: Rates of theft from vehicles per 1,000 population (2009)

Source: Notts. Police CRMS Data returned to SAU Data Hub

Nottinghamshire Local Transport Plan Evidence Base Report

4.2 Reported crime-related incidents on the rail network in Nottinghamshire

The total numbers of reported crime-related incidents on the rail network has decreased from 503 in 2008 to 437 in 2009. Table 17 below details the top 10 types of reported incidents as well as the numbers of reported incidents. The top 10 locations of reported incidents as well as the numbers of incidents reported at each location are shown in table 18 below.

Table 17: Top 10 types of reported incidents as well as the numbers of reported incidents

Type of crime	2008	2009
Trespass	101	99
Cable theft	86	26
Anti-social behaviour (ASB)	48	60
Theft – rail property	34	15
Level crossing	34	35
Criminal damage	32	24
Line of route	26	40
Theft – passenger property	23	18
Pedal cycle	19	15
Stone throwing	19	17

Source: British Transport Police (BTP) data

Table 18: Top 10 locations of reported incidents as well as the numbers of incidents reported at each location

Location	2008	2009
Newark Northgate	62	35
Retford	50	34
Worksop	43	30
Mansfield	30	42
Newark Castle	29	24
Beeston	26	38
Newark	26	-
Radcliffe on Trent	24	-
Clipstone	19	-
Mansfield Woodhouse	18	16

Source: British Transport Police (BTP) data