

**Nottinghamshire
Minerals Local Plan
Assessment of sand and gravel
proposed allocation areas in
relationship with the
Nottinghamshire Landscape
Character Assessment**

Prepared by Helen Jones
Landscape and Reclamation Team
Trent Bridge House
Fox Road
West Bridgford
Nottingham
NG2 6BJ

Revision A - December 2011

Index

Report

1. Introduction
2. Proposed sites
3. Purpose of the assessment
4. Relationship of Landscape Character Assessment with Local Development Frameworks
5. Policy Zone categories of the Landscape Character Assessment
6. Methodology of Assessment
7. Results
8. Analysis of assessment
9. Approach to former MLAs
10. Overall Strategy
11. Summary

Appendices

Appendix 1 – Bassetlaw District – Local Development Framework- Landscape Character Policy

Appendix 2 – Greater Nottingham – Local Development Framework- Landscape Character Policy

Appendix 3 – Newark and Sherwood District Council – Local Development Framework - Landscape Character Policy

Appendix 4 – Nottinghamshire Minerals Core Strategy Assessment of sites based on Landscape and Visual Impact Issues produced by the Landscape and Reclamation Team 2009

Drawings

LR/JH23584/01 - Landscape Character Assessment with proposed allocation areas
– East Leake A-D PA13-PA16

LR/JH23584/02 - Landscape Character Assessment with proposed allocation areas
– Bulcote Farm PA07, Shelford PA34,

LR/JH23584/03 - Landscape Character Assessment with proposed allocation areas
– Burrige Farm PA08, Flash Farm PA17, Home Farm southern site PA21, Home Farm northern site PA21, Little Carlton PA26

LR/JH23584/04 - Landscape Character Assessment with proposed allocation areas
– Coddington PA10

LR/JH23584/05 - Landscape Character Assessment with proposed allocation areas
– Besthorpe quarry east PA03, Besthorpe South and Cromwell east PA04, Cromwell PA11, Foxholes Farm PA18, Langford Quarry east PA22, Langford Quarry north PA23, Langford Quarry south PA24, Langford Quarry west PA25

LR/JH23584/06 - Landscape Character Assessment with proposed allocation areas
– Girton West PA19, Manor Farm, Spalford PA27,

LR/JH23584/07 - Landscape Character Assessment with proposed allocation areas
– Sturton Le Steeple PA35

LR/JH23584/08 - Landscape Character Assessment with proposed allocation areas
– Barnby Moor PA01, Botany Bay PA06

LR/JH23584/09 - Landscape Character Assessment with proposed allocation areas
– Scrooby Top A PA31, Scrooby Top B PA32

LR/JH23584/10 - Landscape Character Assessment with proposed allocation areas
– Bawtry Road, Misson PA02

LR/JH23584/11 - Landscape Character Assessment with proposed allocation areas and former MLAs – East Leake A-D PA13-PA16

LR/JH23584/12 - Landscape Character Assessment with proposed allocation areas and former MLAs – Bulcote Farm PA07, Shelford PA34,

LR/JH23584/13 - Landscape Character Assessment with proposed allocation areas and former MLAs – Burrige Farm PA08, Flash Farm PA17, Home Farm southern site PA21, Home Farm northern site PA21, Little Carlton PA26

LR/JH23584/14 - Landscape Character Assessment with proposed allocation areas and former MLAs – Coddington PA10

LR/JH23584/15 - Landscape Character Assessment with proposed allocation areas and former MLAs – Besthorpe quarry east PA03, Besthorpe South and Cromwell east PA04, Cromwell PA11, Foxholes Farm PA18, Langford Quarry east PA22, Langford Quarry north PA23, Langford Quarry south PA24, Langford Quarry west PA25

LR/JH23584/16 - Landscape Character Assessment with proposed allocation areas and former MLAs – Girton West PA19, Manor Farm, Spalford PA27,

LR/JH23584/17 - Landscape Character Assessment with proposed allocation areas and former MLAs– Sturton Le Steeple PA35

LR/JH23584/18 - Landscape Character Assessment with proposed allocation areas and former MLAs– Barnby Moor PA01, Botany Bay PA06

LR/JH23584/19 - Landscape Character Assessment with proposed allocation areas and former MLAs– Scrooby Top A PA31, Scrooby Top B PA32

LR/JH23584/20 - Please note there are no former MLAs in the vicinity of this proposed application area therefore Drawing LR/JH23584/10 has not been reproduced showing the former MLAs.

LR/JH23584/21 – Summary Drawing 1 - South of County - showing recommended allocation sites based on a consideration of landscape character, physical landscape and visual impact.

LR/JH23584/22 – Summary Drawing 2 - Newark Area - showing recommended allocation sites based on a consideration of impact on landscape character, physical landscape and visual impact.

LR/JH23584/23 – Summary Drawing 3 - North of County - showing recommended allocation sites based on a consideration of landscape character, physical landscape and visual impact.

1. Introduction

This report was commissioned and funded by the Minerals and Waste Planning Policy Team of the Policy, Planning and Corporate Services Department of Nottinghamshire County Council. It was carried out by the Landscape and Reclamation team of the Environment and Resources Department of Nottinghamshire County Council.

2. Proposed Sites

In the document Nottinghamshire Minerals Core Strategy “Call for Sites” September 2008 – 37 sites have been put forward. This report considers the Sand and Gravel proposed allocations only. These are as follows:-

Sand and Gravel – North Nottinghamshire

PA01 – Barnby Moor
PA02 – Bawtry Road – Misson
PA06 – Botany Bay – Barnby Moor
PA31 – Scrooby Top A
PA32 – Scrooby Top B
PA35 – Sturton Le Steeple

Sand and Gravel sites – Newark area

PA03 – Besthorpe Quarry East
PA04 – Besthorpe Quarry South / Cromwell east
PA08 – Burr ridge Farm, Winthorpe
PA10 – Coddington
PA11 – Cromwell
PA17 – Flash Farm, Averham
PA18 – Foxholes Farm, North Muskham
PA19 – Girton West
PA21 – Home Farm, Kelham
PA22 – Langford East
PA23 – Langford North
PA24 – Langford South
PA25 – Langford West
PA26 – Little Carlton
PA27 – Manor Farm, Spalford

Sand and Gravel – South Nottinghamshire

PA07 – Bulcote Farm
PA13 – East Leake A
PA14 – East Leake B
PA15 – East Leake C
PA16 – East Leake D
PA34 – Shelford

3. Purpose of the assessment

This assessment will form part of the Supplementary Planning Documents for the Minerals and Waste Development Framework and specifically for the Minerals Local Plan of the Minerals Development Plan which will replace the existing Minerals Local Plan adopted in December 2005.

The Minerals Local Plan will set out the overall approach to future minerals extraction in Nottinghamshire. Key issues will include estimates of the quantity of mineral that is required to meet expected demand over the next 10-15 years, what types of sites are suitable, and where in broad terms new or extended mineral sites should be located. Recent revisions to the new planning system now mean that the Minerals Local Plan may allocate strategic sites.

The Minerals Development Control Policies will be prepared at the same time as the Minerals Local Plan. This document will set out policies for controlling development and making sure environmental standards are met. Policies will therefore cover issues such as traffic, noise and dust as well as policies aimed at protecting important wildlife, heritage sites and landscapes.

The objective of this assessment is to compare the list of proposed allocated sites above with information contained in the most recent Nottinghamshire Landscape Character Assessment which is composed of 3 sections:-

- Bassetlaw Landscape Character Assessment 2009
- Greater Nottingham Landscape Character Assessment 2009
- Newark and Sherwood Landscape Character Assessment 2009

This will enable the allocation sites to be assessed in terms of their impact on landscape character.

4. Relationship of the Landscape Character Assessment to Local Development Frameworks

This Landscape Character Assessment information has been incorporated into:-

- Bassetlaw District Local Development Framework -Bassetlaw Publication Core Strategy and development management policies November 2010 -Policy DM9 Green Infrastructure: Biodiversity and Geodiversity: Landscape: Open Space and Sports Facilities Status - adopted document (See Appendix 1 for policy)
- Greater Nottingham Local Development Framework- Greater Nottingham Aligned Core Strategies – February 2010 – Policy 17 – Landscape Character Status - document not yet adopted (See Appendix 2 for policy)
- Newark and Sherwood Local Development Framework – Core Strategy Development Plan Document March 2011 – Core Policy 13 Landscape Character Status – adopted document (See Appendix 3 for policy)

5. Policy Zone Categories within the Landscape Character Assessment

The methodology for the Nottinghamshire Landscape Character Assessment is described in the Methodology of the Nottinghamshire Landscape Character Assessment – Nottinghamshire County Council Landscape and Reclamation Team August 2009, this is summarised as an Executive Summary and Flow Chart to show the Landscape Character Assessment Process.

In summary it divides identified Policy Zones into a number of categories which have landscape actions associated with them, as shown in the table below

Bassetlaw/ Newark and Sherwood Landscape Character Assessment

Landscape Condition	High Condition	Reinforce	Conserve and Reinforce	Conserve
	Moderate Condition	Create and Reinforce	Conserve and Create	Conserve and Restore
	Poor Condition	Create	Restore and Create	Restore
		Low Sensitivity	Moderate Sensitivity	High Sensitivity

Landscape Sensitivity

The landscape actions can be defined more precisely as follows:-

Conserve – actions that encourage the conservation of distinctive features and features in good condition.

Conserve and Reinforce – actions that conserve distinctive features and features in good condition, and strengthen and reinforce those features that may be vulnerable.

Reinforce – actions that strengthen or reinforce distinctive features and patterns in the landscape.

Conserve and Restore – actions that encourage the conservation of distinctive features in good condition, whilst restoring elements or areas in poorer condition and removing or mitigating detracting features.

Conserve and Create – actions that conserve distinctive features and features in good condition, whilst creating new features or areas where they have been lost or are in poor condition.

Restore – actions that encourage the restoration of distinctive features and the removal or mitigation of detracting features.

Restore and Create – actions that restore distinctive features and the removal or mitigation of detracting features, whilst creating new features or areas where they have been lost or are in poor condition.

Reinforce and Create – actions that strengthen or reinforce distinctive features and patterns in the landscape, whilst creating new features or areas where they have been lost or are in poor condition.

Create – actions that create new features or areas where existing elements are lost or are in poor condition.

Greater Nottingham Landscape Character Assessment

The methodology for the Greater Nottinghamshire Landscape Character Assessment is described in Section 5 of the GNLCA document dated June 2009 produced by TEP consultancy

In summary it divides identified Policy Zones into a number of categories which have landscape actions associated with them, as shown in the table below:-

Landscape Condition	Good Condition	Enhance	Conserve and Enhance	Conserve
	Moderate Condition	Enhance and Restore	Enhance	Conserve and Enhance
	Low Condition	Restore and Create	Enhance and Restore	Enhance
		Weak Strength	Moderate Strength	Strong Strength

Strength of Landscape Character

The landscape actions can be defined more precisely as follows:-

Conserve: where the landscape quality is considered to be good (due to good condition and strong character) and there should be an emphasis on protecting or safeguarding the key features and characteristics of the landscape in their present form.

Enhance: emphasis should be to improve existing features which may not be currently well- managed or where existing features are of good quality but could be of greater benefit if improved. This may include improvements to landscape management practices or the introduction or removal of elements or features in order to strengthen character and/or perceived condition.

Restore: emphasis should be on repairing or re-establishing features that have been lost or are in a state of severe decline.

Create: where the landscape quality is poor (due to poor condition and weak character) and the original landscape pattern is no longer evident. In such places there is a need to form new and different landscapes. An example of this is a landscape which has been heavily influenced by quarrying and industry, field pattern and features are no longer evident and the restored land has altered the landform.

In summary both methodologies use a matrix based process to identify a range of actions between **protection** of the highest quality landscape and **creation** of a new landscape where existing landscape quality is poor.

6. Methodology of Assessment

This project was a desk based assessment using information collected previously as part of the LCAs by means of field survey as detailed in the appropriate methodologies.

6.1 Stage 1

This involved a comparison of the proposed mineral allocation sites with the landscape actions derived from the LCAs detailed above, on an OS base. This was achieved using the software - MapInfo Professional 10.5. The outputs were a series of maps LR/JH23584/01 – LR/JH25834/10 as listed on page 3 and 4 of the document.

6.2 Stage 2

This involved a more detailed review of proposed allocation areas with reference to the report - Nottinghamshire Minerals Core Strategy Assessment of sites based on Landscape and Visual impact Issues - produced by the Landscape and Reclamation team in 2009. This report assessed landscape impact of the proposed allocated sites at site level and made a preliminary identification of sites which if developed would have a lower physical landscape and visual impact. The methodology for this assessment is contained in the report which is enclosed as Appendix 4.

This stage also considered the relationship of the proposed allocated sites to Mature Landscape Areas or MLAs. These were former local landscape designations which identified areas generally reflected areas of permanent pasture, which also had ecological and heritage interest. It was useful in this assessment to refer to the former MLA areas because their mature features still exist on the ground and contribute to the process of sieving out those sites with greater impact on landscape character. This information was taken into account in the above report.

A further series of maps LR/JH23584/11 – LR/JH25834/19, as listed on page 3 and 4 of the document, was produced which shows the location of the MLAs. This was achieved using the software - MapInfo Professional 10.5.

6.3 Stage 3

Once the above stages were completed those allocation sites which should be prioritised for development after considering their landscape character and the likely physical landscape impact and visual impact of the development were identified.

6.4 Stage 4

Using the above information a 'vision statement' explaining the approach that should be incorporated in the Core Strategy was produced.

7. Results

7.1 Stage 1 - Parish Scale

The spread of sites within the Bassetlaw, Newark and Sherwood LCA Landscape actions were as follows:-

Landscape Condition	High Condition	<p>Reinforce</p> <p>None</p>	<p>Conserve and Reinforce</p> <p>Barnby Moor PA01 Botany Bay PA06(part) Flash Farm PA17(part) Foxholes Farm PA18 Langford Quarry west PA25 Little Carlton PA26(part) Scrooby Top A PA31 Scrooby Top B PA32 Shelford PA34 (part)</p>	<p>Conserve</p> <p>Flash Farm PA17(part) Sturton Le Steeple PA35)</p>
	Moderate Condition	<p>Create and Reinforce</p> <p>Besthorpe Quarry East PA03 Besthorpe south/ Cromwell east PA04 (part) Burridge Farm PA08 Cromwell PA11 (part) Girton west PA19 Home Farm-southern site PA21 (part) Home Farm-northern site PA21 (part) Langford Quarry north PA23 Langford Quarry South PA24</p>	<p>Conserve and Create</p> <p>Besthorpe south/ Cromwell east PA04 (part) Botany Bay PA06 (part) Bulcote Farm PA07 Coddington PA10 Cromwell PA11 (part) Flash Farm PA17 (part) Langford Quarry east PA22 Little Carlton PA26 (part) Shelford PA34 (part)</p>	<p>Conserve and Restore</p> <p>Bawtry Road PA02</p>
	Poor Condition	<p>Create</p> <p>Manor Farm PA27 Home Farm-southern site PA21 (part)</p>	<p>Restore and Create</p> <p>none</p>	<p>Restore</p> <p>none</p>
			Low Sensitivity	Moderate Sensitivity

Landscape Sensitivity

The spread of sites within the Greater Nottingham LCA Landscape actions were as follows:-

Good Condition	Enhance Shelford PA34 (part)	Conserve and Enhance East Leake A-D PA13 –PA16	Conserve None
Moderate Condition	Enhance and Restore None	Enhance Shelford PA34 (part)	Conserve and Enhance East Leake A-D PA13 –PA16
Low Condition	Restore and Create None	Enhance and Restore None	Enhance Shelford PA34 (part)
	Weak Strength	Moderate Strength	Strong Strength

Strength of Landscape Character

7.2 Stage 2 - Site Scale

The report – ‘Nottinghamshire Minerals Core Strategy Assessment of sites based on Landscape and Visual impact Issues’ produced by the Landscape and Reclamation team in 2009 - ranked sites with reference to the landscape and visual impact using the information that was available from the potential applicants at that time. The full methodology is included in Appendix 4 but the summary of this report was as follows.

The two scores for Landscape and Visual impact were combined. Each site had a potential score range of 1-6. They were grouped into sites with least impact (with a score of 1 or 2), moderate impact (3 or 4) and most impact (5 or 6).

Sites with lowest Landscape and Visual Impact

Reference	Name	Score
PA30	Rufford Quarry East	2
PA31	Scrooby Top A	2

Sites with lower Landscape and Visual Impact

Reference	Name	Score
PA 3	Besthorpe Quarry East	3
PA 8	Burridge Farm	3
PA 9	Carlton Forest	3
PA 11	Cromwell	3
PA 13	East Leake A	3
PA 18	Foxholes Farm	3
PA 19	Girton West	3
PA 21	Home Farm Kelham – Southern site	3
PA 24	Langford Quarry South	3
PA 29	Red Barn	3
PA 32	Scrooby Top B	3
PA 36	Two Oaks Farm	3

Sites with moderate Landscape and Visual Impact

Reference	Name	Score
PA 2	Bawtry Road, Misson	4
PA 4	Besthorpe Quarry South	4
PA 6	Botany Bay	4
PA 16	East Leake, D	4
PA 17	Flash Farm, Averham	4
PA 21	Home Farm Kelham – Northern Site	4
PA 23	Langford Quarry North	4
PA 28	Nether Langwith	4
PA 35	Sturton Le Steeple	4

Sites with most Landscape and Visual Impact

Reference	Name	Score
PA 1	Barnby Moor	5
PA 5	Bestwood 2	5
PA 7	Bulcote Farm, Gunthorpe	5
PA 10	Coddington	5
PA 12	Dorket Head	5
PA 14	East Leake B	5
PA 15	East Leake C	5
PA 20	Holbeck	5
PA 22	Langford Quarry East	5
PA 25	Langford Quarry West	5
PA 26	Little Carlton	5
PA 27	Manor Farm, Spalford	5
PA 33	Scrooby Top – Sherwood Sandstone	5
PA 34	Shelford	5
PA 37	Kirton	5

When the Drawings LR/JH23584 11 -19 were analysed the following allocations partially but directly over lap with former MLA areas:-

Home Farm southern site PA21 – MLA reference 4 - Newark west - 7.72 % overlap

Flash Farm PA 17 MLA reference 33 Micklebarrow Hill and MLA reference 34 Kelham Hills 6.26 % overlap

Langford Quarry west PA 25 – MLA reference 20 - Holme Slough Pyk 69.94% overlap (This site was ruled out as having high Landscape and Visual impact in the previous work)

In summary, in the majority of cases there is no overlap between the proposed allocations and areas formerly designated as MLAs except for those shown above.¹ However it should be noted that the setting of the MLAs would be affected by the development of the allocation sites adjacent to them.

8. Analysis of assessment

8.1 Bassetlaw Landscape Character Assessment/ Newark and Sherwood Landscape Character Assessment

8.1.1 Sites preferable for development

In terms of the quality of their landscape character the allocated sites which are preferable for development are those where the landscape condition and landscape sensitivity is at the lower end of the spectrum, these also involve the creation of new features in the restoration process as shown below:-

¹ Quantities measured from Plan Web software

Restore and Create - Poor landscape condition/moderate landscape sensitivity

– actions that restore distinctive features and the removal or mitigation of detracting features, whilst creating new features or areas where they have been lost or are in poor condition.

Reinforce and Create - Moderate landscape condition/low landscape sensitivity – actions that strengthen or reinforce distinctive features and patterns in the landscape, whilst creating new features or areas where they have been lost or are in poor condition.

Create - Poor landscape condition/ low landscape sensitivity– actions that create new features or areas where existing elements are lost or are in poor condition.

The following sites fall into this category:-

Restore and Create - None

Reinforce and Create – Besthorpe Quarry east PA03,
Besthorpe south Cromwell east PA04 (Part),
Burrige Farm PA08,
Cromwell PA11 (part)
Girton west PA19
Home Farm southern site PA21 (part)
Home Farm northern site PA21,
Langford Quarry north PA23
Langford Quarry south PA24,

Create – Manor Farm, Spalford PA27.
Home Farm southern site PA21(Part)

8.1.2 Sites least preferable for development

In terms of the quality of their landscape character the allocated sites which are least preferable for development are those where the landscape condition and landscape sensitivity is at the higher end of the spectrum.

Conserve and Reinforce - High landscape condition/moderate landscape sensitivity – actions that conserve distinctive features and features in good condition, and strengthen and reinforce those features that may be vulnerable.

Conserve and Restore - Moderate landscape condition/high landscape sensitivity – actions that encourage the conservation of distinctive features in good condition, whilst restoring elements or areas in poorer condition and removing or mitigating detracting features.

Conserve – High landscape condition/ high landscape sensitivity – actions that encourage the conservation of distinctive features and features in good condition.

The following sites fall into this category:-

Conserve and Reinforce – Barnby Moor PA01
Botany Bay PA06 (part)
Flash Farm PA17 (part)
Foxholes Farm PA18
Langford Quarry west PA25 (part)
Little Carlton PA26 (part)
Scrooby Top A PA31
Scrooby Top B PA32
Shelford PA34 (part)

Conserve and Restore – Bawtry Road PA02

Conserve – Flash Farm PA17 (part)
Sturton Le Steeple PA35

8.2 Greater Nottingham Landscape Character Assessment

8.2.1 Sites preferable for development

In terms of the quality of their landscape character the allocated sites which are preferable for development are those where the landscape condition and landscape strength is at the lower end of the spectrum, that is those where some element of the creation of new features is required in the restoration process as shown below:-

Restore and Create - poor landscape condition/ weak landscape strength

Enhance and Restore- Moderate landscape condition/ weak Landscape strength or Moderate landscape strength/ poor landscape condition

No sites fall into these categories in the GNLCA area

8.2.2 Sites least preferable for development

In terms of the quality of their landscape character the allocated sites which are least preferable for development are those where the landscape condition and landscape strength is at the higher end of the spectrum.

Conserve – good landscape condition/ strong landscape strength

No sites fall into this category in the GNLCA area

Conserve and Enhance – Moderate landscape condition/ strong landscape strength or moderate landscape strength/ good landscape condition

The following sites fall into this category:-

East Leake A-D PA13- PA16

8.3 Landscape Character Assessment and Landscape and visual impact issues.

8.3.1 Sites preferable for development and with low landscape and visual impact

As discussed in section 7.2 above the report – ‘Nottinghamshire Minerals Core Strategy Assessment of sites based on Landscape and Visual impact Issues 2009’ made a preliminary identification of allocation sites with lower physical landscape and visual impact. Several of these overlap with the sites listed above, these were:-

Besthorpe Quarry East PA03
Burrige Farm PA08
Cromwell PA11
Girton West PA19
Home Farm southern site PA21
Langford Quarry south PA24

8.3.2 Sites least preferable for development and with high landscape and visual impact

As discussed in section 7.2 above, the report – ‘Nottinghamshire Minerals Core Strategy Assessment of sites based on Landscape and Visual impact Issues 2009’ made a preliminary identification of allocation sites with greater physical landscape and visual impact. Several of these overlap with the sites listed above, these were:-

Barnby Moor PA01
East Leake B PA14
East Leake C PA15
Langford Quarry west PA25
Shelford (part) PA34

9. Suggested approach to former MLAs

Where former MLA areas overlap with allocation areas it is recommended that the historical land use of these areas is examined as part of the applicants Landscape and Visual Impact Assessment, If these areas still show evidence of historic land uses such as permanent pasture it is recommended that they should be excluded from the application areas.

10. Suggested overall strategy

In terms of landscape character it is preferable to develop those allocated sites which are in the lower end of the spectrum when landscape character is considered, that is those with poor - moderate landscape condition, strength of landscape character and landscape sensitivity. In addition, those sites where physical landscape impact and visual impact had already been identified as being at a lower level in previous work should also be prioritised for development, this work took into account the former MLA designations.

The rationale behind this is that the mitigation proposed as part of the applicant's landscape and visual impact assessments can achieve positive landscape actions detailed in the Landscape Character Assessments.

In terms of landscape character it is least preferable to develop those allocated sites which are at the higher end of the spectrum when landscape character is considered, that is those with high – moderate landscape condition, strength of landscape character and landscape sensitivity. In addition, those sites where physical landscape impact and visual impact had already been identified as being at a higher level in previous work should not be developed.

In addition, the information presented by the applicant in the Landscape and Visual Impact Assessment completed as part of the Environmental Statement should refer to the National/ Regional and County level landscape character assessments. A site specific LCA should also be included as part of the baseline assessment. This should analyse the physical components of the existing application area and its current and historical land use. These components can be restored or recreated as part of the mitigation to achieve the landscape actions in the Landscape Character Assessments.

11. Summary

It is possible to make 586 hectares² of allocation from sites where landscape restoration can be seen to have a positive effect in achieving the actions in the landscape character assessments

It is possible to make 271 hectares³ of allocation from sites where landscape restoration can have a positive effect in achieving the actions in the landscape character assessments and where a preliminary assessment of landscape and visual impact has shown these impacts are lower than other allocated sites.

These sites are all located in the area of the Trent Valley to the north of Newark and are shown on summary drawing number LR/JH25384/22 enclosed with this document.

There are 668 hectares⁴ of allocated sites where the landscape character is of higher quality and should be conserved.

There are 377 hectares⁵ of allocated sites where the landscape character is of a higher quality and should be conserved and where it has been identified that the landscape and visual impact of their development would be high.

These sites are shown on summary drawings number LR/JH25384/21-23 enclosed with this document.

² Calculated from area in hectares from information on proposed allocations Map Info table dated 21.08.11, and quantities measured from Plan Web software (Besthorpe south PA04, Cromwell PA11, Home Farm southern site PA21)

³ Calculated from area in hectares from information on proposed allocations Map Info table dated 21.08.11, and quantities measured from Plan Web software (Home Farm southern site PA21)

⁴ Calculated from area in hectares from information on proposed allocations Map Info table dated 21.08.11, and quantities measured from Plan Web software (Botany Bay PA06, Little Carlton PA26, Shelford PA34)

⁵ Calculated from area in hectares from information on proposed allocations Map Info table dated 21.08.11, and quantities measured from Plan Web software (Shelford PA34)

References

Bassetlaw Landscape Character Assessment as part of

Bassetlaw District Local Development Framework -Bassetlaw Publication Core Strategy and development management policies - November 10
Status –adopted document

Greater Nottingham Landscape Character Assessment as part of

Greater Nottingham Local Development Framework- Greater Nottingham Aligned Core Strategies – February 2010
Status –document not yet adopted

Newark and Sherwood Landscape Character Assessment as part of

Newark and Sherwood Local Development Framework – Core Strategy Development Plan Document March 2011
Status –adopted document

East Midlands Regional Landscape Character Assessment published by Natural England

National Landscape Character Assessment published by Natural England

Nottinghamshire Minerals Core Strategy “Call for Sites” September 2008

Nottinghamshire Minerals Core Strategy Assessment of sites based on Landscape and Visual impact Issues produced by the Landscape and Reclamation team in 2009

Methodology of the Nottinghamshire Landscape Character Assessment – Nottinghamshire County Council Landscape and Reclamation Team August 2009, this is summarised as an Executive Summary and Flow Chart to show the Landscape Character Assessment Process

Greater Nottingham Landscape Character Assessment dated June 2009 produced by TEP consultancy, this contains the methodology in Section 5

Appendix 1

5.7 Policy DM9: Green Infrastructure; Biodiversity & Geodiversity; Landscape; Open Space & Sports Facilities

- 5.18** Bassetlaw benefits from an extensive strategic green infrastructure network (see Figure 5.1)⁽³⁹⁾ and a variety of landscape character areas with different requirements (see Figure 5.2) for their ongoing protection and enhancement. These networks and landscapes are recognised as some of the District's key assets, being integral to its strong appeal as a place to live and work.
- 5.19** It will be important to ensure that the level of new development across the District does not undermine these strengths and, instead, contributes to improvements to the connectivity of the overall green infrastructure network and addresses deficiencies where they exist. Similarly, new development will need to integrate with the character of the surrounding area and take full account of landscape character at all stages in the planning and delivery process, recognising opportunities for habitat creation.
- 5.20** The current Bassetlaw Open Space and Play Pitch Assessments identify 481 sites that fall within the typologies of open space as listed in national policy⁽⁴⁰⁾. These sites include: sports pitches; children's play areas; parks and gardens; natural and semi-natural green space; green corridors; amenity greenspace; allotments; cemeteries and church yards.
- 5.21** The Council is committed to upgrading existing open spaces and ensuring that new open spaces are of a high quality.
- 5.22** This policy delivers Strategic Objectives SO4, SO5, SO6, SO7 and SO8.

39 Green infrastructure includes features of recognised biodiversity importance (SSSIs, SINC, LNRs and Ancient Woodland); local parks; playing fields and sports pitches; cemeteries; school grounds; allotments; historic parks and gardens; woodland; watercourses and their floodplains; hedgerows; and grassland.

40 PPG17: Planning for Open Space, Sport and Recreation

POLICY DM9: GREEN INFRASTRUCTURE; BIODIVERSITY & GEODIVERSITY; LANDSCAPE; OPEN SPACE AND SPORTS FACILITIES

A. Green Infrastructure

Development proposals will be expected to support the Council's strategic approach to the delivery, protection and enhancement of multi-functional Green Infrastructure, to be achieved through the establishment of a network of green corridors and assets (please refer to the Council's Green Infrastructure work for a full list of Green Corridors and Nodes within, and running beyond, the District) at local, sub-regional and regional levels. Particular support will be given to proposals that will further the development of:

- The Idle Valley Project;
- The Trent Vale Partnership;
- Sherwood Forest Regional Park.

Development proposals (particularly for allocated sites) will be expected to demonstrate, in line with the Council's Green Infrastructure work, that:

- they protect and enhance green infrastructure assets affected by the development and take opportunities to improve linkages between green corridors;
- where they overlap with or will affect existing green infrastructure nodes or corridors, such assets are protected and enhanced to improve public access and use;
- where opportunities exist, development proposals provide improvements to the green infrastructure network that benefit biodiversity through the incorporation of retained habitats and by the creation of new areas of habitat;
- they provide robust delivery mechanisms for, and means of ensuring the long-term management of, green infrastructure.

Development that will result in the loss of existing green infrastructure may be supported where replacement provision is made that is considered to be of equal or greater value than that which will be lost. Where new development may have an adverse impact on green infrastructure, alternative scheme designs that minimise impact must be presented to the Council for consideration before the use of mitigation measures (e.g. off-site or through financial contributions for improvements elsewhere) is considered.

B. Biodiversity and Geodiversity

Development proposals will be expected to demonstrate that they will not adversely affect or result in the loss of features of recognised importance, including:

- Trees and hedgerows subject to preservation orders;
- Ancient woodlands;

- Sites of Special Scientific Interest (SSSI);
- Regionally Important Geodiversity Sites;
- Local Wildlife Sites (Sites of Importance for Nature Conservation (SINC)); and
- Local and UK Biodiversity Action Plan Habitats.

Development that will result in the loss of such features may be supported where replacement provision is made that is considered to be of equal or greater value than that which will be lost and which is likely to result in a net gain in biodiversity. Where new development may have an adverse impact on such features, alternative scheme designs that minimise impact must be presented to the Council for consideration before the use of mitigation measures is considered. Where sufficient mitigation measures cannot be delivered, compensation measures must be provided as a last resort.

C. Landscape Character

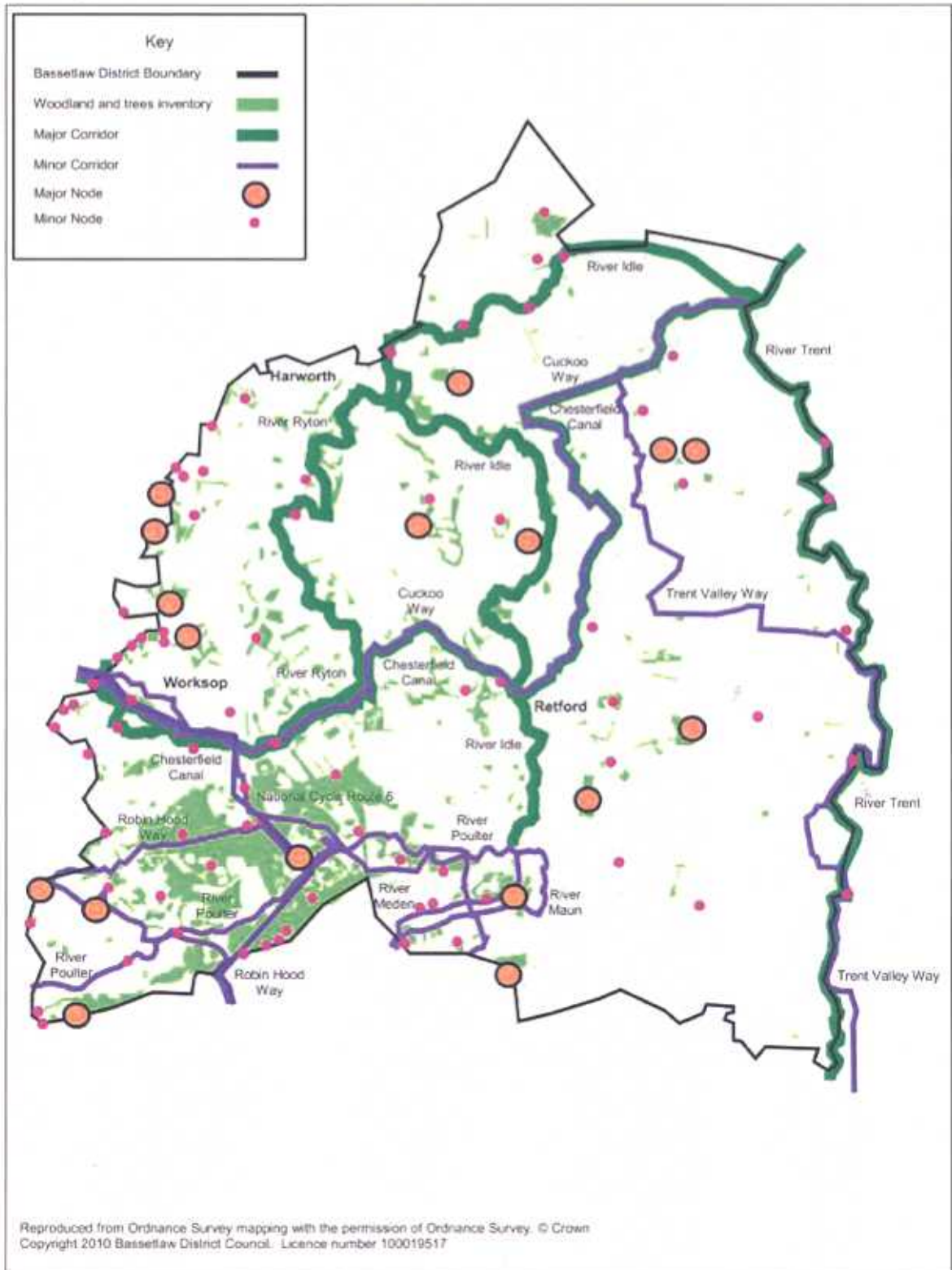
New development proposals in and adjoining the countryside will be expected to be designed so as to be sensitive to their landscape setting. They will be expected to enhance the distinctive qualities of the landscape character area in which they would be situated, as identified in the Bassetlaw Landscape Character Assessment. Proposals will be expected to respond to the local recommendations made in the Assessment by conserving, restoring, reinforcing or creating landscape forms and features accordingly.

D. Open Space and Sports Facilities

Development proposals will be expected to demonstrate that they will not adversely affect or result in the loss of protected open spaces and sports facilities (please see Proposals Map) identified in the Council's Open Space and Sports Facilities studies. Exceptions may be made if the open spaces or facilities are identified as surplus to demand in a given location and that alternative provision, or a contribution towards new or improved facilities elsewhere, would be preferable. Alternative scheme designs that minimise impact should be considered before the use of mitigation (on-site, off-site or through contributions as appropriate).

New development proposals (particularly for allocated sites) will be expected to provide functional on-site open space and/or sports facilities (which will become protected for the purposes of this policy), as well as contributions for on-going maintenance, to meet any deficiencies in local provision (when assessed against locally defined standards as set out in the Council's Open Space and Sports Facilities studies) that will be caused by the development or to provide contributions towards new or improved facilities elsewhere locally.

Bassetlaw Green Infrastructure Network



Produced by Bassetlaw District Council GIS Team

Figure 5.1

Landscape Character Policy Zones

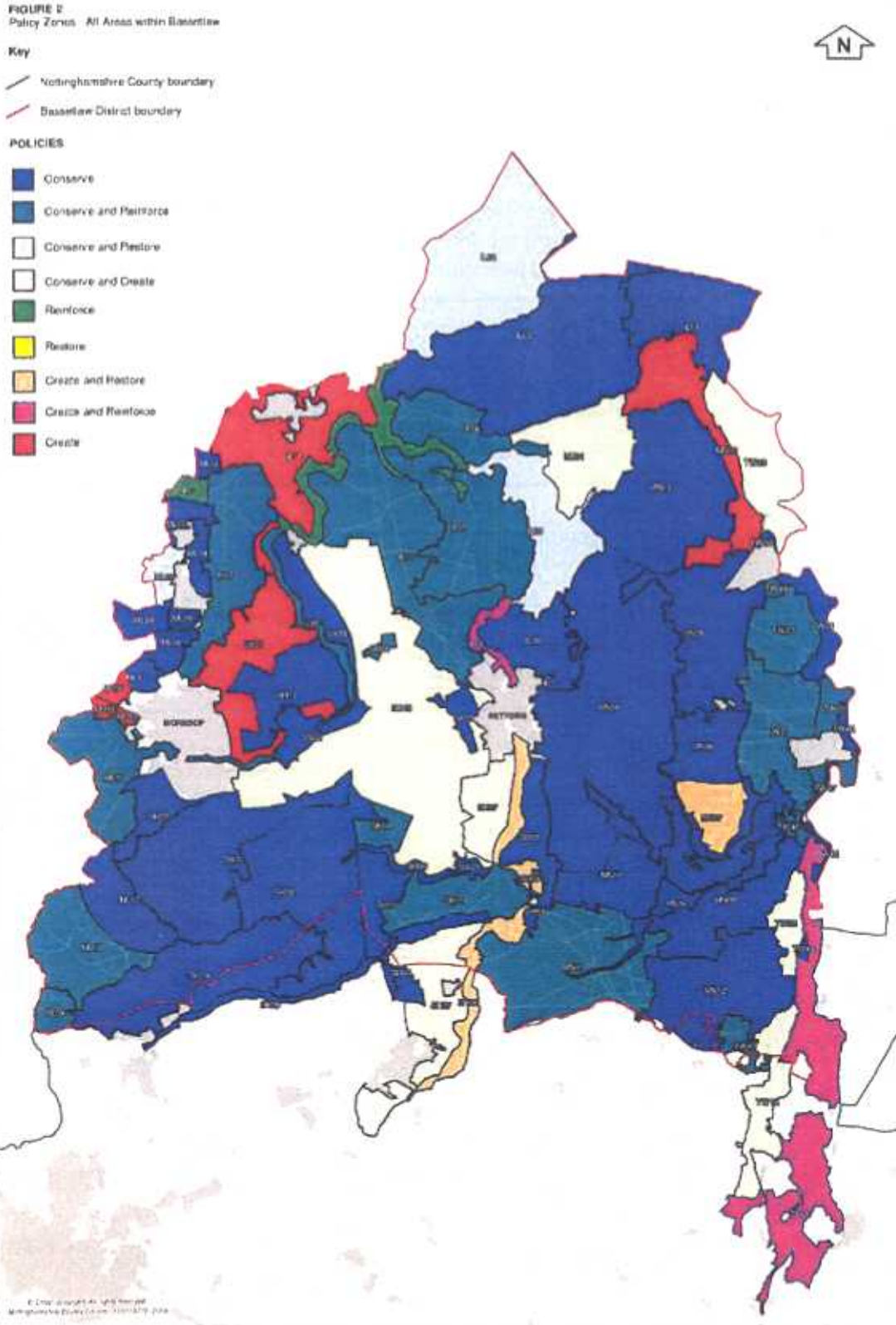


Figure 5.2

Appendix 2

3. The Delivery Strategy

3.17 LANDSCAPE CHARACTER



ISSUES AND OPTIONS, WHAT YOU TOLD US

The main options feeding into this policy from the Issues and Options are **GI 1, GI 2 and GI 4**

The main comments received from the Issues and Options consultation are as follows:-

- Green infrastructure within part of new development must evolve with the landscape, rather than impacting upon it.
- Farming should be included in a paragraph on landscape as they are inextricably intertwined.
- Definition of Green Infrastructure should include historic sites and cultural features, not just natural and ecological assets.
- Important species take years to establish and if they are constantly disturbed, there is no chance of them spreading or biodiversity increasing.
- Reference to private gardens should be removed as there are far more threatened and declining habitats than this.
- Impact of new development to the surrounding environment.
- Include historic environment, local distinctiveness and landscape character.

POLICY 17 LANDSCAPE CHARACTER

New development should take account of landscape character. Where appropriate, planning applications should set out how the development responds to landscape features as set out in both the Greater Nottingham Landscape Character Assessment and the Landscape Character of Derbyshire.

JUSTIFICATION

3.17.1 Policy 31 of the East Midlands Regional Plan (2009) states that local authorities should prepare Landscape Character Assessments to inform the preparation of Local Development Frameworks.

3. The Delivery Strategy

3.17.2 The Landscape Character of Derbyshire was adopted in 2003 and the Greater Nottingham Landscape Character Assessment was adopted in 2009. The Greater Nottingham Landscape Character Assessment identified seven themes which combine to define landscape character and are the most appropriate to use for identifying landscape change. These include:-

1. Woodland;
2. Boundary features;
3. Agriculture;
4. Settlement pattern;
5. Semi-natural habitats;
6. Historical features; and
7. River and coastal.

3.17.3 The two assessments identify Landscape Character Types within National and Regional Landscape Character Areas. The assessments give recommendations regarding the features of each policy zone, such as the important ridgelines around Nottingham, which should be reflected, where appropriate within supporting statements accompanying planning application submissions.

3.17.4 Policy 29 and Appendix 3 of the East Midlands Regional Plan set out regional habitat targets.

BACKGROUND TO OPTION FOR CONSULTATION AND ALTERNATIVE OPTIONS CONSIDERED

3.17.5 Core Strategy Objectives

- v. Strong, safe and cohesive communities
- viii. Health and well being
- x. Environmentally responsible development addressing climate change
- xi. Protecting and developing new Green Infrastructure, including open spaces
- xii. Protecting and enhancing Greater Nottingham's individual character and local distinctiveness

3.17.6 National and Regional Policy Framework

Planning Policy Statement 1: Delivering Sustainable Development (2005). Sets out the Government's policies to deliver homes, jobs, and better opportunities for all, whilst protecting and enhancing the natural and historic environment, and conserving the countryside and open spaces that are vital resources for everyone.

Planning Policy Guidance 2: Green Belts (1995). Sets out five purposes of including land in Green Belts. The Note also contains guidance on the designation of Green Belts and the control over development in Green Belts.

Planning Policy Statement 7: Sustainable Development in Rural Areas (2004). Sets out the Government's planning policies for rural areas, including country towns and villages and the wider, largely undeveloped countryside up to the fringes of larger urban areas.

Planning Policy Statement 9: Biological and Geological Conservation (2005). Sets out the

3. The Delivery Strategy

Government's policies in relation to the protection of biodiversity and geological conservation. Its aim is to maintain, enhance, restore or add to biodiversity or geological conservation interests.

East Midlands Regional Plan (2009) – Policy 31 Priorities for the Management and Enhancement of the Region's Landscape. Requires local authorities to prepare Landscape Character Assessments to inform the preparation of Local Development Frameworks.

3.17.7 Local Policies, Strategies and Evidence

Greater Nottingham Landscape Character Assessment (2009)
The Landscape Character of Derbyshire (2003)
Nottinghamshire Local Biodiversity Action Plan (1998)
Lowland Derbyshire Biodiversity Action Plan 2008-2010 (2008)

3.17.8 Alternative Options

There are no alternative options.

3.17.9 Sustainability Appraisal

The policy understandably has very positive effects on Biodiversity, Landscape and Natural Resources, but it also shows significant benefits in terms of Health and Heritage. The SA suggested a broadly neutral impact from this policy on the provision of new housing and employment opportunities; any development constraint being balanced by added value brought about by very positive impacts on visual quality. The only possible negative feature identified was in relation to Energy where a potential conflict could exist between developments for renewable energy and areas of landscape character. Such conflict could be minimised through careful design and siting.

3.17.10 Option for Consultation

The landscape character assessments provide the evidence which should be reflected within planning application submissions.

3.17.11 How will this policy be implemented?

Establish new indicators in Local Development Framework Annual Monitoring Report.
Development Control decisions on planning applications.

Appendix 3

5 Core Policies

Landscape Character

5.64 National and Regional policy requires Councils to move from local landscape designations to a comprehensive assessment of Landscape Character. This approach has the benefit of assessing the whole of an area's landscape rather than focusing on particular locations. In Nottinghamshire, the County Council has developed a Landscape Character Assessment process, which the District Council has used to comprehensively assess Newark and Sherwood District's area. This assessment requires that the landscape be broken down into County Character Areas. This work was undertaken for the earlier Nottinghamshire Landscape Guidelines. It places the District in 5 County Character Areas:

- Sherwood
- Mid Nottinghamshire Farmlands
- Trent Washlands
- East Nottinghamshire Sandlands
- South Nottinghamshire Farmlands

5.65 The Landscape Guidelines also identify within the Character Areas a number of Landscape Policy Zones, shown for illustrative purposes in Figure 4. These Zones refer to individual areas of similar character within the Character Areas. Presently the District Council and the County Council are undertaking detailed assessments of condition and sensitivity of the landscape of each Policy Zone. The Zones themselves are split down into individual Landscape Character Parcels. The aim is to identify Conservation and Enhancement Aims for each Landscape Policy Zone. The Zones will be categorised as one of the following types of Policy Actions which require a particular approach to:

Action	
Conserve	Actions that encourage the conservation of distinctive features and features in good condition.
Conserve and Reinforce	Actions that conserve distinctive features and features in good condition and strengthen and reinforce those features that may be vulnerable.
Reinforce	Actions that strengthen or reinforce distinctive features and patterns in the landscape
Conserve and Restore	Actions that encourage the conservation of distinctive features in good condition, whilst restoring elements or areas in poorer condition and removing or mitigating detracting features.
Conserve and Create	Actions that conserve distinctive features and features in good condition, whilst creating new features or areas where they have been lost or are in poor condition.
Restore	Actions that encourage the restoration of distinctive features and the removal or mitigation of detracting features.

Action	
Restore and Create	Actions that restore distinctive features and the removal or mitigation of detracting features, whilst creating new features or areas where they have been lost or are in poor condition.
Reinforce and Create	Actions that strengthen or reinforce distinctive features and patterns in the landscape, whilst creating new features or areas that have been lost or are in poor condition.
Create	Actions that create new features or areas where existing elements are lost or are in poor condition.

5.66 The findings of the Landscape Character Assessments of each Landscape Policy Zone will help inform the work of the LDF, shaping future strategies and in the determination of Planning Applications. The Assessment will become a Supplementary Planning Document of the LDF.

Core Policy 13

Landscape Character

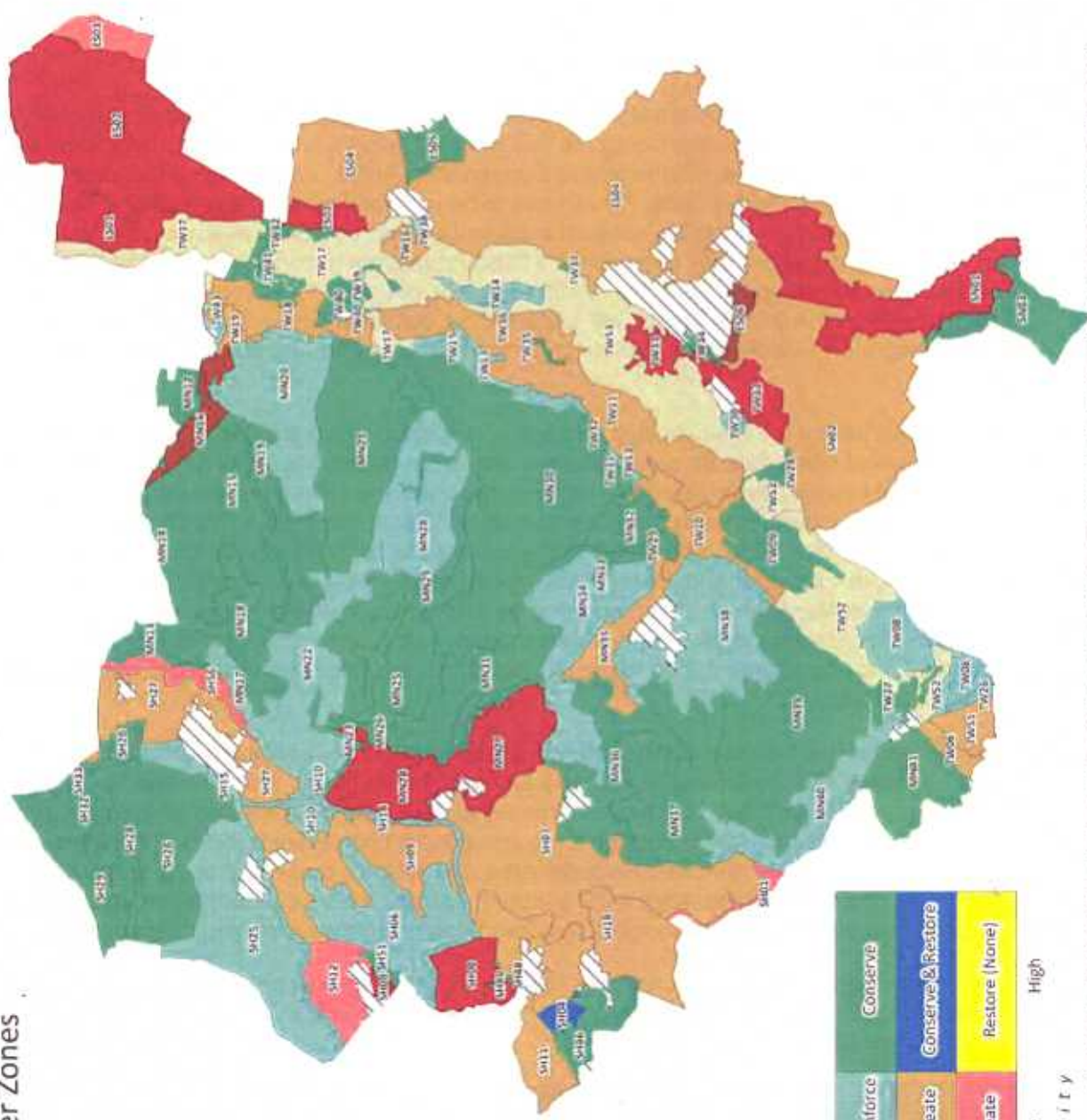
The LDF will introduce a comprehensive landscape assessment of Newark and Sherwood which will identify the landscape character condition and sensitivity of each Landscape Policy Zone. Landscape Policy Zones will be categorised as one of the following types of areas which require an action to:

	<i>Good</i>	Reinforce	Conserve and Reinforce	Conserve
Condition	<i>Moderate</i>	Create and Reinforce	Conserve and Create	Conserve and Restore
	<i>Poor</i>	Create	Restore and Create	Restore
		<i>Low</i>	<i>Moderate</i>	<i>High</i>
		Sensitivity		

When allocating land within the Core Strategy and the Allocations & Development Management DPD, the District Council will need to demonstrate that the allocations impact on the Landscape Policy Zone and its Conservation and Enhancement actions have been appropriately addressed.

The District Council will expect development proposals to positively address the implications of the Landscape Policy Zones in which the proposals lie and demonstrate that such development would contribute towards meeting Landscape Conservation and Enhancement Aims for the area.

Figure 4 - Landscape Character Zones



C	Good	Reinforce	Conserve & Reinforce	Conserve
n	Moderate	Create & Reinforce	Conserve & Create	Conserve & Restore
d	Poor	Create	Restore & Create	Restore (None)
f				
i				
o				
n				
		Low	Moderate	High
		<i>S e n s i t i v i t y</i>		

This map is reproduced from the Ordnance Survey material with the permission of Ordnance Survey on behalf of the Controller of Her Majesty's Stationery Office © Crown Copyright. Unauthorised reproduction infringes Crown Copyright and may lead to prosecution or civil proceedings. Newark and Sherwood District Council. Licence 100022788. 2010. Scale: 1:250,000

Historic Environment

- 5.67** Newark and Sherwood's outstanding heritage contributes to providing an historic environment with its own distinctive identity. Central to this are the District's historic assets, which includes over 1300 Listed Buildings, 47 designated Conservation Areas, 72 Scheduled Monuments and 4 Registered Parks and Gardens; if they were to be lost, they cannot be replaced. The District Council has a statutory duty to protect such important assets but in order to ensure their continued active use and upkeep, it may be necessary to accommodate historically appropriate, sensitive and sustainable changes. Thus the District Council will seek to ensure that any proposals concerning these heritage assets will secure their continued protection and enhancement, contributing to the wider vitality, viability, regeneration of an area, reinforcing a strong sense of place.
- 5.68** A significant part of the Districts built heritage is contained within the designated Conservation Areas, each of which has its own distinctive character, defined by its historic importance, its architectural integrity, the relationships between buildings and spaces between them, townscape quality, historic street patterns and the use of traditional materials. The District Council is undertaking Conservation Area Character Appraisals in order to identify those features that contribute to its character and architectural interest and to provide a basis for the production of an appropriate Management Plan. Developers and others considering making changes in a conservation area should take into account matters considered to be important in the relevant Appraisal and Management Plan to ensure that schemes accord with the aims and objectives of the Core Policy.
- 5.69** Complementing the District's historic built heritage is a rich and varied historic natural environment, which includes the Registered Parks and Gardens of Thoresby Park, Thurgarton Hundred Workhouse, Rufford Abbey and Newark Castle Gardens and other historic parklands such as the grounds at Kelham Hall. In addition there are also the historic landscapes of the Stoke Field Battlefield, the Sherwood Forest Heritage Area and with its preserved open field system of agriculture, the historic landscape setting around Laxton. It is crucial that these environments are protected by the District Council's considered approach to development management.
- 5.70** Policy detailing the District Council's approach to the management of development proposals impacting upon the historic environment will be provided for in the Allocations & Development Management DPD.

Core Policy 14

Historic Environment

Newark & Sherwood has a rich and distinctive historic environment and the District Council will work with partners and developers in order to secure:

- The continued preservation and enhancement of the character, appearance and setting of the District's heritage assets and historic environment, including Scheduled Monuments and other archaeological sites, Registered Historic Parks and Gardens, Listed Buildings and buildings of local historic importance, Conservation Areas and other cultural assets of significant value;

- The preservation of the special character of Conservation Areas - including such character identified in Conservation Area Character Appraisals which will form the basis for their management. Important open spaces and features identified through the Conservation Area Appraisal process will be protected through subsequent allocation in the Allocations & Development Management DPD; and
- The protection of Historic Landscapes including the Historic Battlefield at Stoke Field, the Sherwood Forest Heritage Area and the Historic Landscape around Laxton. A sustainable future for Laxton will be sought, which preserves and enhances its Open Field System and culture, the built and natural environment which sustain it, including the Historic Landscape around Laxton, and the institutions which manage it. This will be achieved by working in partnership with the Court Leet, the Crown Estates and the Parish Council. Appropriate new development which facilitates these aims will be supported.

Appendix 4

**Nottinghamshire
Minerals Core Strategy
Assessment of sites based on
Landscape and Visual impact
Issues**

Prepared by Nancy Ashbridge
and Helen Jones
Landscape and Reclamation Team
Trent Bridge House
Nottingham
NG2 6BJ

Introduction

This report was commissioned and funded by the Minerals and Waste Planning Team, Communities Department of Nottinghamshire County Council. It was carried out by the Landscape and Reclamation team, Communities Department of Nottinghamshire County Council.

Purpose of document

This assessment will form part of the Minerals Core Strategy and the Minerals Development Control Policies Document, which are part of the local Development Framework, which will replace the existing Minerals Local Plan.

The Minerals Core Strategy will set out overall approach to future minerals extraction in Nottinghamshire. Key issues will include estimates of how much mineral needs to be provided to meet expected demand over the next 10-15 years, what types of sites are suitable, and where in broad terms should new or extended mineral sites be located. Recent revisions to the new planning system now mean that the Core Strategy may allocate strategic sites.

The Minerals Development Control Policies will be prepared at the same time as the Core Strategy. This document will set out policies for controlling development and making sure environmental standards are met. Policies will therefore cover issues such as traffic, noise and dust as well as policies aimed at protecting important wildlife, heritage sites and landscapes.

Proposed Sites

In the document Nottinghamshire Minerals Core Strategy “Call for Sites” September 2008 – 37, sites have been put forward. These are as follows:

Aggregate and Limestone

PA20 – Holbeck

PA28 – Nether Langwith

Sherwood sandstone – North Nottinghamshire

PA09 – Carlton Forest

PA29 – Red Barn Quarry

PA33 – Scrooby Top

Sherwood sandstone – Mansfield Area

PA05 – Bestwood 2
PA30 – Rufford Quarry East
PA36 – Two Oaks Farm

Clay

PA12 – Dorket Head
PA37 – Kirton

Sand and Gravel – North Nottinghamshire

PA01 – Barnby Moor
PA02 – Bawtry Road – Misson
PA06 – Botany Bay – Barnby Moor
PA31 – Scrooby Top A
PA32 – Scrooby Top B
PA35 – Sturton Le Steeple

Sand and Gravel sites – Newark area

PA03 – Besthorpe Quarry East
PA04 – Besthorpe Quarry South / Cromwell east
PA08 – Burrigge Farm, Winthorpe
PA10 – Coddington
PA11 – Cromwell
PA17 – Flash Farm, Averham
PA18 – Foxholes Farm, North Muskham
PA19 – Girton West
PA21 – Home Farm, Kelham
PA22 – Langford East
PA23 – Langford North
PA24 – Langford South
PA25 – Langford West
PA26 – Little Carlton
PA27 – Manor Farm, Spalford

Sand and Gravel – South Nottinghamshire

PA07 – Bulcote Farm
PA13 – East Leake A
PA14 – East Leake B
PA15 – East Leake C
PA16 – East Leake D

Methodology

Desk based assessment

Prior to a site visit the following information was referred to:

- The Ordnance Survey 1:25,000 Explorer Series Sheets
- Vertical aerial photographs Year 2007 were used to identify major land uses and significant local features, such as drainage pattern, woodland cover, settlement pattern and transport corridors.
- The web based definitive map of “Public Rights of Way”, which is maintained and updated by Nottinghamshire County Council.
- The web based map of SSSI and SINIC sites maintained and updated by NCC.
- Various Landscape Character Assessments including:
 - ▶ The Greater Nottingham Landscape Character Assessment (covers Ashfield DC, Gedling BC, Broxtowe BC, Rushcliffe BC, Nottingham City Council and Mansfield DC areas) 2009
 - ▶ The Bassetlaw District Council Landscape Character Assessment (Bassetlaw DC Area) 2009
 - ▶ The Trent Washlands Landscape Character Assessment (covers the Trent Washlands County Character area) 2009.
 - ▶ The Nottinghamshire Landscape Guidelines 1998
- Nottinghamshire Minerals Core Strategy – Call for Sites: September 2008 – released for Internal Consultation May 2009
- Topographical analysis of the landform was produced by means of a GIS based software application known as Map info, with additional “Vertical Mapper” software. This was used to identify the extent of “Baseline” visibility of the proposed site, and visually sensitive receptors such as roads and residential properties, prior to the field survey.

Field Based Assessment

The main purpose of the field assessment was to verify the findings of the desk based study. Further information was collected on the condition of internal field boundaries and species present, as well as site boundary hedgerows along roads or tracks. The views of the site from existing recreational receptors using Public Rights of Way, traveller receptors on roads, tracks and railway lines were also assessed in the field, as well as views from residential properties and isolated farms. Representative photographs were also taken of the site.

Collation of Information

Following the desk based and field survey stages, a reference sheet for each site was produced. This included information under the following headings:

Site Description – This outlines the key components of the site

Site Context – This describes the features around the boundary of the proposed site, and details the nearest settlements.

Designated sites – This details the adjacent sites with an ecological designation of SSSI or SINIC. It also provides details of any adjacent Mature Landscape areas.

Landscape Character – This section includes a description of the key visual characteristics of the landscape character policy area in which the site is located. This description is taken from the relevant Landscape Character Assessment produced in 2009. Where this work is not yet completed (Newark and Sherwood District Council Area) the existing Nottinghamshire Landscape Guidelines is used. It also includes the Policy recommendation for that particular Policy Zone e.g: Conserve and Create. The policies can be defined more precisely as follows:

Conserve – actions that encourage the conservation of distinctive features and features in good condition.

Conserve and Reinforce – actions that conserve distinctive features and features in good condition, and strengthen and reinforce those features that may be vulnerable.

Reinforce – actions that strengthen or reinforce distinctive features and patterns in the landscape.

Conserve and Restore – actions that encourage the conservation of distinctive features in good condition, whilst restoring elements or areas in poorer condition and removing or mitigating detracting features.

Conserve and Create – actions that conserve distinctive features and features in good condition, whilst creating new features or areas where they have been lost or are in poor condition.

Restore – actions that encourage the restoration of distinctive features and the removal or mitigation of detracting features.

Restore and Create – actions that restore distinctive features and the removal or mitigation of detracting features, whilst creating new features or areas where they have been lost or are in poor condition.

Reinforce and Create – actions that strengthen or reinforce distinctive features and patterns in the landscape, whilst creating new features or areas where they have been lost or are in poor condition.

Create – actions that create new features or areas where existing elements are lost or are in poor condition.

Visibility – This provides an overview of visibility of the site from the surrounding area.

Landscape Impacts – This section aims to list the direct landscape impacts of the scheme and indirect impacts.

Predicted visual impacts – This section lists in greater detail the potential receptors that will be affected by the scheme. These were divided into Residential (the most sensitive), Recreational and Traveller Receptors (the least sensitive).

Cumulative Impacts – This section details any other applications either existing or proposed in the adjacent area to the site.

Mitigation – Any mitigation measures identified as a result of the above study are detailed at this point.

Other Comments – This section aims to summarise the main landscape impacts, and the main visual impacts to gain a sense of the significance of impacts the proposed development of the site will create, in comparison to others in landscape and visual terms. It also includes information on the proposed site access and location of mineral processing facilities, it provides comments on these arrangements from a landscape and visual impact point of view.

Grading of sites

Once the site visits and field sheets were completed for all sites, it was necessary to rank them into the sites most suited to development in landscape and visual terms, and the sites least suited. The method used for this was as follows:

Landscape Impacts

All sites were graded from Least Landscape Impact (1) to most Landscape Impact (3). Sites scored more highly if the proposals resulted in the removal of mature trees and mature hedgerows, particularly if any of these features were designated as Bio SINC. The sites were graded by the Landscape Architect who carried out the site visits.

Visual Impacts

All sites were graded from Least Visual Impact (1), to Most Visual Impact (3). Sites scored more highly if they had impact on residential receptors, particularly on the edge of a village rather than isolated properties. They were also scored more highly if they had an impact on A roads, rather than minor roads, and if the proposals had a direct impact on a P.R.O.W, which crosses the proposed site.

Summary

The two scores for Landscape and Visual impact were combined. Each site had a potential score range of 1-6. They were grouped into sites with least impact (with a score of 1 or 2), moderate impact (3 or 4) and most impact (5 or 6).

The summary of this exercise is shown below.

Sites with lowest Landscape and Visual Impact

Reference	Name	Score
PA30	Rufford Quarry East	2
PA31	Scrooby Top A	2

Sites with lower Landscape and Visual Impact

Reference	Name	Score
PA 3	Besthorpe Quarry East	3
PA 8	Burridge Farm	3
PA 9	Carlton Forest	3
PA 11	Cromwell	3
PA 13	East Leake A	3
PA 18	Foxholes Farm	3
PA 19	Girton West	3
PA 21	Home Farm Kelham – Southern site	3
PA 24	Langford Quarry South	3
PA 29	Red Barn Stet	3
PA 32	Scrooby Top B	3
PA 36	Two Oaks Farm	3

Sites with moderate Landscape and Visual Impact

Reference	Name	Score
PA 2	Bawtry Road, Misson	4
PA 4	Besthorpe Quarry South	4
PA 6	Botany Bay	4
PA 16	East Leake, D	4
PA 17	Flash Farm, Averham	4
PA 21	Home Farm Kelham – Northern Site	4
PA 23	Langford Quarry North	4
PA 28	Nether Langwith	4
PA 35	Sturton Le Steeple	4

Sites with most Landscape and Visual Impact

Reference	Name	Score
PA 1	Barnby Moor	5
PA 5	Bestwood 2	5
PA 7	Bulcote Farm, Gunthorpe	5
PA 10	Coddington	5
PA 12	Dorket Head	5
PA 14	East Leake B	5
PA 15	East Leake C	5
PA 20	Holbeck	5
PA 22	Langford Quarry East	5
PA 25	Langford Quarry West	5
PA 26	Little Carlton	5
PA 27	Manor Farm, Spalford	5
PA 33	Scrooby Top – Sherwood Sandstone	5
PA 34	Shelford	5
PA 37	Kirton	5