

Improving Outcomes for Children & Young People with Disabilities project – Members Briefing

The 'Improving Outcomes for Children & Young People with Disabilities' project is a 2 year project which aims to establish a high quality disability service for children and young people (age 0-25 years) that is value for money.

The project aims to identify opportunities for a more integrated approach to supporting families who currently access services provided by:

- Children's Disability Service (CDS)
- Special Educational Needs & Disabilities (SEND) Policy and Provision
- community health disability services via the Integrated Commissioning Hub
- Countywide Transitions Team (Adults Services)
- Early Help Services

We know that a number of children access multiple services from across these areas. Recent data illustrates that 66% of children accessing support from CDS services, also access support from SEND services. Consultation feedback has also shown us that families are unclear where to go to access support. The project therefore aims to reduce duplication, share resources and improve the service user journey and experience for children and young people with disabilities and their families by streamlining access to services and reducing the amount of times a child and family have to repeat their story.

Aims

The project aims to:

- *Ensure all children and young people with a disability in Nottinghamshire have access to comprehensive, child-centred and flexible services to respond to the needs of families at the right time*
- *Develop Information, Advice and Support provision across the county to improve awareness of the services and support available for children and young people with a disability and their families*
- *Improve the transition from childhood to adulthood for young people and families by working closely with adult services*
- *Focus on early intervention and prevention to reduce high cost services in the future*
- *Reduce duplication across Health, CDS and SEND Policy and Provision and develop a consistent approach to commissioning and delivering services*
- *Facilitate increased multi-agency working between Social Care, Education and Health services in line with the Children and Families Act (2014) and reduce levels of duplication*
- *Act as an enabler for achieving the long term integration strategy within the Nottinghamshire Children and Young People's (aged 0-25) Special Educational Needs and Disability Integrated Commissioning Strategy (2015-17)*

- *Respond to changes to legislation, in particular the Children and Families Act 2014 and Care Act 2014*
- *Identify efficiencies which will contribute to a £450,000 savings target (subject to option for change sign off)*

Workstreams

The project aims to address this through 8 key workstreams.

Phase 1 workstreams (April 15 – March 16)

- **Structures Review**
A review of CDS and SEND structures to explore opportunities for an integrated structure to reduce the amount of times a family has to repeat their story and improve the experience and journey for children and young people with disabilities and their families. This aims to reduce any duplication of functions and ensure consistency and equality of terms and conditions across the department
- **Information, advice & support provision**
Enabling children, young people and families to have access to locality based information, advice and support, promoting the use of universal and targeted provision to prevent demand for social care provision at a crisis stage
- **Short Breaks Demand**
To ensure provision is equitable across the County and develop provision to support children in their home or community where appropriate and prevent the need for costly social care services.
- **Commissioning & Procurement**
Ensuring commissioning practices and procedures are streamlined & consistent to provide best value for money
- **Preparing for Adulthood**
To ensure young people receive high quality support and timely planning for their transition from childhood to adulthood
- **SEN Review** (being led by Matt Rooney)

Phase 2 workstreams (April 16 – March 17)

- **Equipment & Access**
To reduce cross-service duplication, identify efficiencies & improve service user experience in relation to Occupational Therapy and its assessment process
- **Speech, Language & Communication Needs**
To reduce cross-service duplication, identify efficiencies & improve service user experience in relation to Speech & Language Therapy

Each workstream has a Workstream Delivery Group comprised of service experts which advise on and drive the work of the workstreams they represent. Appendix 1 illustrates the key work that is taking place over the next few months.

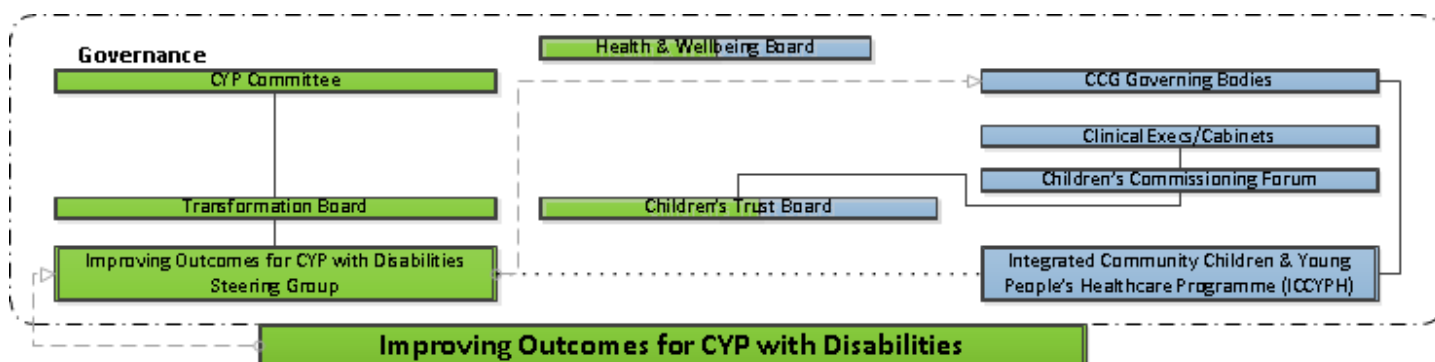
Governance

The steering group provides direction and regular decision-making and is chaired by the project sponsor, Steve Edwards.

Steering Group Attendees:		
Name	Role	Department
Steve Edwards	Service Director (Project Sponsor)	Children's Social Care
Marion Clay	Interim Service Director	Education Standards and Inclusion
Ainsley McDonnell	Service Director	Adult Social Care
Amanda Collinson	Group Manager	Children's Disability Service
Jill Norman	Group Manager	SEND Policy and Provision
Sarah Everest	Senior Public Health and Commissioning Manager	Integrated Commissioning Hub (on behalf of Public Health/CCG's)
Laurence Jones	Group Manager	Early Help
Matt Rooney	Strategic Lead	Special Schools and Specialist Provision (SEND)
Helen Lester	Programme Manager	Children's Programme & Projects Team
Amy Gittins	Project Manager	Children's Programme & Projects Team

Given the nature of the project and its work across local authority and health services, the project is ultimately responsible to the Health & Well-being Board. Recommendations for approval follow the processes relevant for the local authority or health organisations involved.

Local authority recommendations are taken to the Transformation Board or Children & Young Peoples committee for decision as appropriate. Where decisions affect health services and colleagues, reports are taken to the relevant health forum (as well as NCC forums) for decision making and sign off. A detailed example of the lines of accountability is illustrated below:



For any queries relating to the Improving Outcomes project, please contact Amy Gittins, Project Manager, Children's Programmes & Projects Team on amy.gittins@nottscg.gov.uk or 07740 845 676.

Appendix 1

Phase 1 Workstream	Current aims	Work over next months
Structures Review	To explore opportunities for integration of teams, particularly within Children's Disability Service and SEND. This will reduce any duplication of functions and improve the service user journey.	<p>January 2016 Staff consultation complete</p> <p>22nd February Final structure proposal presented to CYP Committee for approval</p> <p>Spring -New structure goes live -Comprehensive workforce development & team building undertaken</p>
Information, advice & support provision (IAS)	<p>Co-ordinating existing information, advice and support that is provided in-house and through commissioning of external providers into one key offer. The Customer Service Centre will be promoted as the key point of initial contact for IAS. They will triage family's needs and signpost/refer to more specialist information if required.</p> <p>Families have contributed to and voted for a new name for the service. This new name will be used jointly with Nottingham City Council.</p>	<p>January 2016 - New service name voted for by families</p> <p>February - New offer goes live and promoted to families</p>
Short Breaks Demand	To ensure that the market is sufficient for the provision that will be required over the next few years.	<p>April 2016 - Market Development post in place and work developed</p>
Commissioning & Procurement	Exploring opportunities for integrating services across OT & Personalisation team, SEND Assessment and Commissioning Teams, and LAC placements team with the aim of reducing duplication across assessment, contract management and finance. Also to identify ways in which commissioning can be joined up to ensure we get best value for money from providers.	<p>Same as Structures Review work</p> <p>Spring 2016 - Further work undertaken to join up contracts where possible</p>
Preparing for Adulthood	Developing a new transitions strategy and pathway for young people. Also addressing issues relating to data collection and forecasting future demand. These were identified as priority areas following a Transitions visioning day with key stakeholders from NCC.	<p>February 2016 - New strategy & pathway to Transformation Team</p> <p>March - Strategy to CYP and Adults Committees for approval</p>