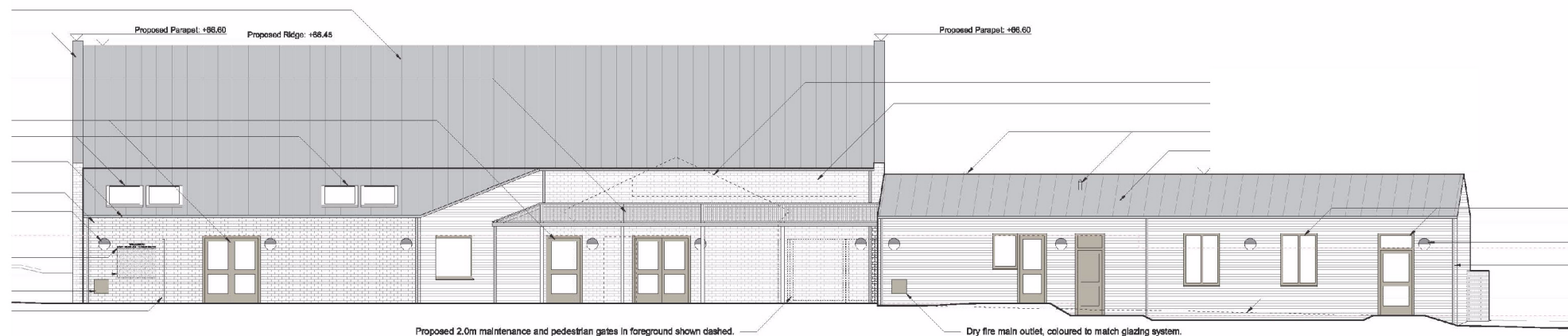


3 - Side (NE) Elevation / Scale 1:100



4 - Side (SW) Elevation / Scale 1:100



**Nottinghamshire
County Council**

Erection of a stand alone single storey hall, kitchen and classroom building. Expansion of existing photovoltaic solar array. Associated paving, hard play area and landscape works. Retention of container (1/15/01155/CDM), erection of additional storage shed, 2.0m metal gate and 2.6m high timber storage enclosure. Demolition of frontage wall to Askham Road (for construction access) and re-erection of wall following the completion of works.
East Markham Primary School, Askham Road, East Markham, Nottinghamshire.
Planning Application No. 1/19/00660/CDM

This map is reproduced from Ordnance Survey material with the permission of Ordnance Survey on behalf of the
Controller of Her Majesty's Stationery Office © Crown copyright.
Unauthorised reproduction infringes Crown copyright and may lead to prosecution or civil proceedings. (1000019713) (2019)

Not to Scale
for illustration only

Produced by: JW

Date: DEC 2019



PLAN 6