

# **Children and Young People's Committee**

**Monday, 19 June 2017 at 10:30**

**County Hall, County Hall, West Bridgford, Nottingham, NG2 7QP**

---

## **AGENDA**

**1 To note:**

a. the appointment by the County Council on 25 May 2017 of Councillor Philip Owen as Chairman of the Committee, and Councillors Boyd Elliott and Tracey Taylor as Vice-Chairmen

b. The membership of the Committee:

Chairman – Councillor Philip Owen  
Vice-Chairman – Councillor Boyd Elliott  
Vice-Chairman – Councillor Tracey Taylor  
Councillor Samantha Deakin  
Councillor Errol Henry JP  
Councillor Paul Henshaw  
Councillor Vaughan Hopewell  
Councillor John Peck JP  
Councillor Liz Plant  
Councillor Phil Rostance  
Councillor Sue Saddington  
Plus 4 Non-voting Co-optees:-  
Vacancy (Church of England Diocese)  
Vacancy (Roman Catholic Diocese)  
Vacancy x2 (Parent Governor)

**2 Minutes of the last meeting held on 20 March 2017** **3 - 6**

**3 Apologies for Absence**

**4 Declarations of Interests by Members and Officers:- (see note below)**

(a) Disclosable Pecuniary Interests

(b) Private Interests (pecuniary and non-pecuniary)

|    |   |         |
|----|---|---------|
| 5  | Performance reporting (quarter 4 2016-17) - services for children and young people                          | 7 - 18  |
| 6  | Children, Families and Cultural Services - departmental priorities and key actions for 2017-18              | 19 - 24 |
| 7  | Exceptional payments for school clothing and footwear 2017-18   | 25 - 28 |
| 8  | County CAMHS Looked After and Adoption Team - service provision and developments 2016-17                    | 29 - 36 |
| 9  | Local Authority governor appointments to school governing bodies during the period 1 March to 10 April 2017 | 37 - 40 |
| 10 | Work programme  | 41 - 46 |

## **Notes**

- (1) Councillors are advised to contact their Research Officer for details of any Group Meetings which are planned for this meeting.
- (2) Members of the public wishing to inspect "Background Papers" referred to in the reports on the agenda or Schedule 12A of the Local Government Act should contact:-

Customer Services Centre 0300 500 80 80

- (3) Persons making a declaration of interest should have regard to the Code of Conduct and the Council's Procedure Rules. Those declaring must indicate the nature of their interest and the reasons for the declaration.

Councillors or Officers requiring clarification on whether to make a declaration of interest are invited to contact Alison Fawley (Tel. 0115 993 2534) or a colleague in Democratic Services prior to the meeting.

- (4) Councillors are reminded that Committee and Sub-Committee papers, with the exception of those which contain Exempt or Confidential Information, may be recycled.
- (5) This agenda and its associated reports are available to view online via an online calendar - <http://www.nottinghamshire.gov.uk/dms/Meetings.aspx>

Meeting CHILDREN & YOUNG PEOPLE'S COMMITTEE

Date 20 March 2017 (commencing at 10.30am)

**Membership**

Persons absent are marked with an 'A'

**COUNCILLORS**

John Peck JP (Chairman)  
Kate Foale (Vice-Chairman)  
Liz Plant (Vice-Chairman)

|                |   |                |
|----------------|---|----------------|
| John Allin     | A | Keith Longdon  |
| Maureen Dobson |   | Philip Owen    |
| Boyd Elliott   |   | Sue Saddington |
| Alice Grice    |   | Andy Sisons    |

|   |                         |
|---|-------------------------|
|   | Ex-officio (non-voting) |
| A | Alan Rhodes             |

**CO-OPTED MEMBERS (NON-VOTING)**

|   |                      |
|---|----------------------|
|   | Vacancy              |
| A | Mr David Richards JP |

**OTHER COUNCILLORS IN ATTENDANCE**

Darren Langton

**OFFICERS IN ATTENDANCE**

|                  |   |
|------------------|---|
| Nicole Chavaudra | Adult Social Care, Health and Public Protection |
| Marion Clay      | Children, Families and Cultural Services        |
| Steve Edwards    | Children, Families and Cultural Services        |
| Linda Foster     | Children, Families and Cultural Services        |
| Derek Higon      | Children, Families and Cultural Services        |
| Pip Milbourne    | Children, Families and Cultural Services        |
| Colin Pettigrew  | Children, Families and Cultural Services        |
| Chris Warren     | Children, Families and Cultural Services        |
| Jas Hundal       | Place   |
| Sara Williams    | Place   |
| Alison Fawley    | Resources                                       |

## **MINUTES OF THE LAST MEETING**

The minutes of the meeting held on 20 February 2017 having been circulated to all Members, were taken as read and were signed by the Chair.

## **APOLOGIES FOR ABSENCE**

Apologies for absence were received from Councillor Keith Longdon.

## **DECLARATIONS OF INTEREST**

None.

## **PERFORMANCE FIGURES FOR NOTTINGHAMSHIRE SCHOOLS, ACADEMIES AND COLLEGES – ACADEMIC YEAR 2015-16**

The Chair introduced the report and lead officers responded to questions and comments from Members.

### **RESOLVED 2017/018**

That the achievements of young people attending Nottinghamshire schools, academies and colleges in Key Stage assessments be noted.

## **SCHOOLS CAPITAL PROGRAMME PROGRESS REPORT**

Jas Hundal and Sara Williams introduced the report and responded to questions and comments from Members

### **RESOLVED 2017/019**

That the progress in delivering the Schools Capital Programme be noted.

## **THE OUTDOOR AND ENVIRONMENTAL EDUCATION SERVICE'S INCREASED OFFER IN CONJUNCTION WITH THE COMMERCIAL DEVELOPMENT UNIT**

The Chair introduced the report and lead officers responded to questions and comments from Members.

### **RESOLVED 2017/020**

That the Outdoor and Environmental Education Service increased offer in conjunction with the Commercial Development Unit, from 1 April 2017, to create a long term increased income to deliver a cost neutral budget by 2020-21 be noted.

## **NATIONAL MINIMUM FOSTERING ALLOWANCES AND FEES TO FOSTER CARERS**

The Chair introduced the report and lead officers responded to questions and comments from Members.

### **RESOLVED 2017/021**

That:

- 1) Nottinghamshire County Council pay its foster carers a weekly fostering allowance, at the national minimum rates, as prescribed by the Department for Education.
- 2) Nottinghamshire County Council maintains the payment rates, as set in 2016-17, in its additional and specific fostering allowances/fees to its foster carers

### **UPDATE ON DEVELOPMENTS IN NURSING SUPPORT FOR PUPILS ATTENDING SPECIAL SCHOOLS**

The Chair introduced the report and lead officers responded to questions and comments from Members.

#### **RESOLVED 2017/022**

That the changes to the way nursing support to children and young people attending special schools in Nottinghamshire will be provided, as part of the transformation of community health services for children and young people with additional needs and disabilities be noted.

### **REVIEW OF THE SENIOR MANAGEMENT STRUCTURE IN CHILDREN, FAMILIES AND CULTURAL SERVICES**

The Chair introduced the report and lead officers responded to questions and comments from Members.

#### **RESOLVED 2017/023**

That the interim senior management structure in Children, Families and Cultural Services for 2017-18 be approved.

### **THE ESTABLISHMENT OF TWO TEMPORARY CO-PRODUCTION POSTS WITHIN THE INTEGRATED CHILDREN'S DISABILITY SERVICE**

The Chair of the meeting agreed that this item, although not included on the agenda, should be considered as a matter of urgency in accordance with Section 100(b)(4)(b) of the Local Government Act 1972, in view of the special circumstances that the report needs to be considered as it requires 2 posts to be established with time limited external funding.

#### **RESOLVED 2017/024**

That the establishment of the following temporary posts for 12 months, in the Integrated Children's Disability Service, to support the co-production of services with parents and carers of children with Special Educational Needs and Disability, be approved:

- 1fte Co production Officer – Hay Band B (subject to job evaluation)
- 0.5 fte Project Assistant – grade 3 (subject to job evaluation)

### **D2N2 TEACHING PARTNERSHIP – SECONDMENT OF NOTTINGHAMSHIRE COUNTY COUNCIL EMPLOYEE TO TEACHING PARTNERSHIP ROLE**

#### **RESOLVED 2017/025**

**That:**

- 1) The information on the D2N2 Teaching Partnership initiative be noted.
- 2) The proposed secondment of a Nottinghamshire County Council employee to the role of Partnership Practice Educator Lead, working with the D2N2 Teaching Partnership, for a period of 12 months, be noted.

#### **SCHOOLS FORUM AND EDUCATION TRUST BOARD OFFICER GROUP REPORT**

**RESOLVED 2017/026**

**That:**

- 1) The legal status, composition, constitution and recent work of the Schools Forum be noted.
- 2) The purpose, composition and recent work to the Education Trust Board be noted.

#### **LOCAL AUTHORITY GOVERNOR APPOINTMENTS TO SCHOOL GOVERNING BODIES DURING THE PERIOD 1 NOVEMBER 2016 TO 22 FEBRUARY 2017**

**RESOLVED 2017/027**

That the appointment of Local Authority governors to school governing bodies during the period 1 November 2016 to 22 February 2017 as listed in paragraphs 5 and 6 of the report be noted.

#### **WORK PROGRAMME**

**RESOLVED 2017/028**

That the Committee's work programme be noted and updated as agreed.

The meeting closed at 12.10 pm.

CHAIRMAN

19 June 2017

Agenda Item: 5

**REPORT OF THE CORPORATE DIRECTOR, RESOURCES****PERFORMANCE REPORTING (QUARTER 4 2016/17) - SERVICES FOR  
CHILDREN AND YOUNG PEOPLE****Purpose of the Report**

1. The purpose of this report is to provide the Committee with a summary of the performance of the Council's services for children and young people between 1 January and 31 March 2017.

**Information and Advice****Performance Reporting for 2016/17**

2. This report forms the fourth quarterly report of 2016/17, reporting on quarterly performance for the 2016/17 financial year. The report now includes performance on services for looked after children and care leavers which was regularly reported to the former Corporate Parenting Sub-Committee.
3. At its meeting in July 2012, the Committee agreed to receive a report each quarter, reviewing performance across the full range of services provided to children and young people. Quarterly reports would be in addition to other reports that might be presented to the Committee from time to time, providing detailed performance-related information about specific initiatives, projects or services. As agreed at this meeting, quantitative performance reporting to the Committee is measured via key performance indicators (KPIs), which cover the full range of services to children and young people.
4. Performance data is set out in the appendices. **Appendix 1** shows those measures which have received updates since the previous quarter. **Appendix 2** shows those measures which have not changed.
5. For each KPI, current performance is compared with the national average for England, and that of the Council's children's services statistical neighbours, where this data is available. Since October 2014, Nottinghamshire's statistical neighbours have been:
  1. Derbyshire
  2. Staffordshire
  3. Lancashire
  4. Worcestershire
  5. Cumbria
  6. Northamptonshire

7. Essex
  8. Kent
  9. Cheshire West and Chester
  10. Warwickshire
6. In addition, for each KPI, the table indicates whether performance has improved (+), declined (-), or remained the same (=) over the current reporting period.
  7. Those KPIs that are aligned against the outcome statements in the [Looked After Children and Care Leavers Strategy 2015-18](#) are highlighted (L) in both **Appendices 1 & 2**. This strategy identifies six outcomes to be achieved, as listed below:
    - 1) Looked after children and care leavers are happy and healthy
    - 2) Looked after children and care leavers are safe
    - 3) Looked after children and care leavers achieve their potential
    - 4) Looked after children and care leavers are prepared for adulthood
    - 5) Looked after children and care leavers are listened to
    - 6) Looked after children and care leavers build positive relationships.
  8. Progress is expected across all outcomes over the course of the three years. In order to ensure that the associated planned activity is realistic, deliverable and focused, an Annual Action Plan has been developed by the multi-agency *Looked After Children and Care Leavers Strategy Group* and progress is regularly monitored. Activity contained within the Annual Action Plan has been informed by the views of children and young people, via bi-annual surveys completed by the Children in Care Council.

### **Protecting the most vulnerable and ensuring that children in our care experience high quality and stable support (provisional figures)**

9. This is the first full year of reporting the percentage of single child and family assessments completed within statutory timescales (45 days) and is positive to note that performance is significantly above target and reached its highest point in the fourth quarter of this financial year.
10. Following the introduction of the single child and family assessment, the indicator measuring those assessments leading onto ongoing children's social care involvement will be reviewed during service planning for 2017-18. Structural changes are also being made which will impact on the usefulness of the data and there are no accurate national comparators.
11. The re-referral rate has slightly increased for this last quarter. However, it is anticipated that the final figure for re-referral into social care will reduce significantly and fall within statistical neighbour and England averages once the data has been cleansed as part of the statutory data collection process.
12. As at the end of March 2017, there were 867 children subject to a child protection plan. This is a further increase from the previous quarter, and a significant increase compared with the figure in March 2016 (703). The rise in the number of plans over the year has been equally due to an increase in the number of new plans and a decrease in the number of plans being ended. Over the year there has only been a small increase in the



number of children being considered at an Initial Child Protection Conference (ICPC). However, the percentage of children becoming subject to a child protection plan at an ICPC has increased. This may be due to the additional scrutiny provided by the operational service managers who are required to agree the threshold for an ICPC. With regards to the decrease in the number of plans being ended over the year, there has been a significant reduction in the number of plans ended at the first review (3 months) and an increase in plans lasting between 1 and 1½ years. The Council does not have current comparable national or statistical data for this period although it remains an area for scrutiny.

13. During January to March 2017, 215 children had their child protection plan ended. In March there was a significant rise in the number of these plans that has lasted over 2 years; 12 discontinued plans in March had lasted for more than 2 years compared with a total of 27 over the entire year (April 2016 to March 2017). The increase seen in March was due to two large sibling groups of the discontinued plans lasting over 2 years. The large majority of the ceased plans over 2 years had been under the category of neglect, and the cases had predominately been the subject of a legal planning meeting and pre-proceedings process (PLO meetings). Although the percentage of plans ceased in quarter 4 lasting 2 years or more is high, the end of year figure (3.1%) is within target and is lower than both the England average and statistical neighbours as at the end of 2015/16.
14. During January to March 2017, 265 children became subject to a new child protection plan; of these 79 (29.8%) became subject to a plan for a second or subsequent time. This figure remains outside the target and is continuing to receive management scrutiny. Of the total 79 repeat plans this quarter, 37 (17 sibling groups) started within 2 years of the previous plan ending (13.9%). These repeat plans which commenced within 2 years of the previous plan ending were predominately for the same reason as the previous plan; neglect and domestic abuse featured significantly within this. Oversight of these cases is generally good and it was appropriate that these children were made subject to a repeat plan. Consideration is also being given in a timely way to whether legal advice is required. In quarter 4 over half of the children who became subject to a repeat plan within 2 years of the previous plan ending have either been or are due to be considered at a legal planning meeting.
15. During January to March 2017, 644 children had their plans reviewed at a child protection conference with a total of 331 review conferences being held, compared with 298 in Quarter 3 and 271 in Quarter 2. This is a significant increase in the number of review conferences being held but the percentage held in timescale has remained consistent and well above the national and our statistical neighbours. Reasons for reviews not being held in timescale continue to include a lack of child protection co-ordinator, social worker and agency availability or errors in booking arrangements.
16. The latest figure for those children adopted shows a much improved and shorter timescale from a child entering care and moving in with their adoptive family. The 445 days for this quarter is very close to the performance threshold of 426 days which was set by the Government for the last 3 year average. Analysis against previous figures shows Nottinghamshire's three year average is gradually reducing, indicating that when the annual figure for 2016-17 is included to calculate the 2014-17 average, the figure should be reduced even further.

17. As with the average time between entering care and living with their adoptive family, the indicator measuring time between the date court granted authority and finding a match has seen a significant improvement towards the end of the year. However, this indicator has seen a rise when analysing the trend of previous three year averages, with the latest 2013-16 average increasing to 293 days compared with 226 for England. On a positive note, the figures reported for 2016-17 lead to a forecast of a much improved three year average for 2014-17.
18. Quarterly performance has been varied when measuring the % of children who wait less than 14 months between admission into care and moving in with their potential new family. Again, the percentage has positively increased when compared with 53% at the end of 2015/16 and 55% for England.
19. As at the end of March 2017, a total of 782 children were looked after by Nottinghamshire which is a rate of 48 per 10,000 children. This figure continues to remain lower than England and statistical neighbours. Recent work around thresholds when children are accommodated suggests that decisions are appropriate and consistently applied. The role of the Child Protection Coordinator is crucial in alerting their managers if it is deemed that a child is in need of accommodation and the appropriate action is not occurring for this to happen. The number of children being admitted into care has dropped slightly from the last quarter with there being an increase in the number of children being discharged from care. When looking at the figures around discharges, 61% of the total related to children returning to the care of their parents or moving into independent living.
20. Work is continually ongoing in order to decrease the percentage of looked after children who have been in multiple short-term placements. The slight increase this quarter is due to children moving to more appropriate placements that suit their needs and older children moving to placements that aid their independence. Annual performance for this indicator sits at 11% for 2015-16.
21. Performance continues to be consistently high for those children remaining in long-term placements, as Nottinghamshire has a high rate of children placed for adoption and long-term fostering placements compared with other local authorities. The latest national figure shows Nottinghamshire performing at ten percentage points higher if compared with the latest quarter.
22. The percentage of care leavers living in safe, secure and affordable accommodation has increased slightly from 83.2% to 83.8% in quarter 4, indicating more young people are less at risk of becoming homeless or living in unsuitable provision. This measure remains above both the statistical neighbours' average of 79.3% and on a par with the national average of 83%.

### **Educational standards and closing the attainment gap**

23. The percentage of young people qualified to Level 3 (2 or more passes at A-Level or equivalent) has witnessed an increase from the previous academic year. Data for young people aged 19 years at the end of the 2015/16 academic year shows 52.0% of those who attended a Nottinghamshire school at age 16 years attained this compared with

50.5% the previous academic year. Nottinghamshire remains at the bottom of its statistical neighbours on this measure behind Northamptonshire (where 52.2% attained Level 3) although the gap between Nottinghamshire and Northamptonshire has narrowed between the two years to now, being 0.2 percentage points behind (was 3 percentage points in 2014/15). Lancashire remains as being placed first (59.4% although a slight fall from 2014/15 of 60.6%), with Derbyshire (closest statistical neighbour) placed 8<sup>th</sup> at 54.4% (out of 11 local authorities, where 1<sup>st</sup> is best). Against all authorities nationally Nottinghamshire is placed 116<sup>th</sup> (out of 151, where 1<sup>st</sup> is best), which represents an improvement in rank from 129<sup>th</sup> last year. The statistical neighbour average is 55.8% (a fall from 56.9% from the previous year), while nationally the figure for the state sector is 57.1% (a slight fall of 0.4 percentage points).

24. The percentage of young people not achieving a Level 2 (A\*-C or equivalent) qualification in English and mathematics in a Nottinghamshire school at age 16 years who go on to achieve this by age 19 years has seen an increase of 2.9 percentage points to 19.8% (from 16.9% in 2014/15). Nationally over the same period there has been an increase of 1.7 percentage points to 24.1% of pupils achieving this threshold. Nottinghamshire is placed 9<sup>th</sup> (out of 11 local authorities) amongst its statistical neighbours in this measure and 119<sup>th</sup> nationally (out of 151, where 1<sup>st</sup> is best). This represents an improvement on national rankings compared with last year when Nottinghamshire was placed 134<sup>th</sup>. This cohort would have completed key stage 4 in 2013 and with improvements in English and mathematics outcomes in Nottinghamshire schools, it could be argued, make it more challenging to perform well on this measure as more pupils achieve the threshold at age 16 years. However, amongst statistical neighbours, Warwickshire (34.5%) and Worcestershire (36.5%) had the closest proportion of pupils at 16 years who failed to achieve A\*-C grades in English and mathematics when compared with Nottinghamshire (36.3%) and both of these areas witnessed a greater proportion of pupils achieve A\*-C grades in English and mathematics by the time these young people turned 19 years (21.4% and 24.3% respectively compared with 19.8% for Nottinghamshire).
25. The number of primary schools in an Ofsted category (inadequate) remains static since the previous quarter with two Nottinghamshire primary schools judged inadequate as at the end of March 2017. William Gladstone CofE Primary (Newark district, a sponsored academy which converted January 2017 under the leadership of the Diocese of Southwell and Nottingham) is now considered a new school due to its recent sponsored academy conversion and no longer inadequate. Netherfield Primary (Gedling district, LA maintained school) remains inadequate from the last quarter. Arnbrook Primary (Gedling district, a sponsored academy which converted April 2014 under the leadership of Southwark Primary Academy - Nottingham LA) became inadequate in February. This was their first inspection as an academy.
26. The number of secondary academies in an Ofsted category has fallen from three to one since the previous quarter. Queen Elizabeth (Mansfield district; a sponsored academy which originally converted January 2012 under the leadership of School Partnership Trust) which was judged inadequate in the last quarter is now under the leadership of Diverse Academies Trust (as at 1<sup>st</sup> September 2016). Newark Academy (Newark district, a sponsored academy which originally converted November 2012 under the leadership of Lincoln College) also judged inadequate in the last quarter is now under the leadership of Torch Academy Gateway Trust (as at 1<sup>st</sup> October 2016). Both schools are considered

new schools and are therefore no longer inadequate. Manor (Mansfield district; a convertor academy which converted August 2011) remains inadequate.

27. The percentage of young people aged 16-17 years who are in Education, Employment or Training (EET) has increased in quarter 4 from the same quarter last year. 96.9% of young people are now in EET, an increase of 3 percentage points. Improvements have also been seen in the proportion of young people whose activity is unknown. Quarter 4 data shows this has fallen to 1.7% (from 4.4% the same quarter last year). Those Not in Education, Employment or Training (NEET) has also witnessed improvements, with only 1.5% of 16-17 year olds falling into this classification (from 1.8%), and the best performance to date. Futures has also recently been graded as Outstanding in their latest inspection in providing jobs and skills advice, training and apprenticeships to support young people and adults into work and training.
28. The number of two year olds taking up their free entitlement has witnessed an increase in the spring 2017 term. 75.0% of eligible two year olds are attending providers, an increase of 9 percentage points (from 66.0%) from the same term last year. Analysis by district shows all eligible Rushcliffe district children are accessing their entitlement whereas the equivalent figure for Newark and Sherwood district is 62.1%. All districts however witnessed an increase from this quarter last year.
29. The percentage of sessions missed in all Nottinghamshire schools (primary, secondary and special schools) due to overall (authorised and unauthorised) absence has witnessed a slight fall from the last academic year. Figures for the year 2015/16 show 4.4% of sessions were missed, a fall of 0.1 percentage points from 2014/15. Nationally over the same period there has been no change with 4.6% of sessions missed, a similar picture amongst statistical neighbour averages with no change at 4.5%. Comparisons by type of Nottinghamshire school show primary and special phase schools have both witnessed a 0.1 percentage point drop to 3.9% and 8.7% respectively. Secondary has witnessed a fall of 0.2 percentage points to 5.0% of sessions missed. All phases are below the equivalent national averages (4.0% for primary, 5.2% secondary and 9.1% for special).

### **Youth Offending & Early Help Support**

30. First time entrants to the youth justice system is reported a quarter in arrears. The target is to remain below the national average which on latest data, released in February 2017, is 346 per 100,000. The new national benchmark for First Time Entrants has fallen by 12%. Despite this Nottinghamshire remains on target to remain well below the average in terms of numbers per 100,000 of youth population. Quarter and year-to-date figures are broadly in line with the previous year.
31. Children's Centre registrations performance remains high with 100% of all children under 5 years who live in low income areas registered with a Children's Centre at the end of quarter 4. The number of these who had been seen at a Children's Centre remains comparable to the same quarter last year. At the end of quarter 4, 73.4% of children living in low income areas were seen in Children's Centres.

### **Education, Health and Care (EHC) Plans**

32. Since 1<sup>st</sup> April 2014, children with statements of special educational needs and young people with Learning Difficulty Assessments have been transitioning to Education, Health and Care (EHC) plans. Completing this transition is a duty on the Local Authority and all children must be transitioned by 1 April 2018. In quarter 4 2016-17 there was a total of 39 EHC Plans finalised, giving a total of 242 plans confirmed during the year.

### **Other Options Considered**

33. The process for presenting performance information set out in this report is in line with corporate guidance, which has itself been established following an appropriate analysis of alternative options.

### **Reason/s for Recommendation/s**

34. The recommendation for quarterly reporting to Committee, and the KPIs that will form the basis of the report, is in line with the established processes of reporting and publishing performance information across all of the services within the Children, Families and Cultural Services department.

### **Statutory and Policy Implications**

35. This report has been compiled after consideration of implications in respect of crime and disorder, finance, human resources, human rights, the NHS Constitution (public health services), the public sector equality duty, safeguarding of children and adults at risk, service users, sustainability and the environment and ways of working and where such implications are material they are described below. Appropriate consultation has been undertaken and advice sought on these issues as required.

### **Safeguarding of Children and Adults at Risk Implications**

36. Reporting on the performance of services for looked after children and care leavers will better enable the Council to ensure that children are effectively safeguarded.

## **RECOMMENDATION/S**

- 1) That the Committee notes the performance of the Council's services for children and young people during the period 1 January – 31 March 2017.

**Jayne Francis-Ward**  
**Corporate Director for Resources Department**

**For any enquiries about this report please contact:**

Matthew Garrard  
Team Manager, Performance, Intelligence and Policy  
T: 0115 9772892  
E: matthew.garrard@nottsccl.gov.uk

### **Constitutional Comments**

37. As this report is for noting only, no Constitutional Comments are required.

**Financial Comments (SS 12/05/17)**

38. There are no financial implications arising directly from this report.

**Background Papers and Published Documents**

Except for previously published documents, which will be available elsewhere, the documents listed here will be available for inspection in accordance with Section 100D of the Local Government Act 1972.

Performance reporting – services for children and young people – report to Children and Young People’s Committee on 20 February 2017.

Looked After Children and Care Leavers Strategy 2015-18

**Electoral Division(s) and Member(s) Affected**

All.

C0986



## Appendix 1 - Indicators updated from previous report

### Children and Young People's Committee: Quarter 4 Performance for 2016/17

For Nottinghamshire, the performance data available at the end of quarter 4 2016/17 is reported. The most recent data for national average and children's services statistical neighbours is reported, where available. Please note, comparisons may be indicative only, as the reporting periods are not necessarily aligned. Where Nottinghamshire performance meets or exceeds the latest national performance information, this is highlighted by the emboldened boxes. Key: (p) = provisional data; (L) = reported against the outcomes in the LAC & Care Leavers Strategy (+) = better than previous value; (-) = worse than previous value; (=) = same as previous value; (n/a) = not comparable to previous value

| Key Performance Indicator   | Nottinghamshire |     |            |                          |  |                | Comparator Data             |                  |                        |
|---|-----------------|-----|------------|--------------------------|--|----------------|-----------------------------|------------------|------------------------|
|   | Current Value   |     | Best to be | Current Reporting Period |  | Previous Value | Previous Annual Performance | National Average | Statistical Neighbours |
| Child and Family assessments for Children’s Social Care carried out within statutory timescales | 96.6%           | (+) | High       | 2016/17 Q4               |  | 90.7%          | N/A                         | 83.4% (2015/16)  | 85.9% (2015/16)        |
| Percentage of assessments leading to an on-going children’s social care involvement             | 29.8%           | (-) | High       | 2016/17 Q4               |  | 31.4%          | 54.8% (2015/16)             | -                | -                      |
| Percentage of child protection cases reviewed within timescale                                  | 97.9%           | (+) | High       | 2016/17 Q4               |  | 97.5%          | 96.6% (2015/16)             | 93.7% (2015/16)  | 94.7% (2015/16)        |
| Re-referrals to Children’s Social Care  | 28.7%           | (-) | Low        | 2016/17 Q4               |  | 28.0%          | 25.6% (2015/16)             | 22.3% (2015/16)  | 22.5% (2015/16)        |
| Children subject to a Child Protection Plan – Rate per 10,000                                   | 53.3            | N/A | N/A        | 2016/17 Q4               |  | 50.2           | 43.2 (2015/16)              | 43.1 (2015/16)   | 43.6 (2015/16)         |
| Children who are subject to a child protection plan for 2 years or more                         | 7.4%            | (-) | Low        | 2016/17 Q4               |  | 1.6%           | 3.6% (2015/16)              | 3.8% (2015/16)   | 3.6% (2015/16)         |
| Children becoming the subject of a child protection plan on more than one occasion              | 29.8%           | (-) | Low        | 2016/17 Q4               |  | 25.7%          | 13.5% (2015/16)             | 17.9% (2015/16)  | 18.2% (2015/16)        |
| Average Strengths and Difficulties Question (SDQ) Score per LAC (L)                             | 14.5            | (-) | High       | 2015/16                  |  | 15.4           | 15.4 (2014/15)              | 14.0 (2015/16)   | 14.3 (2015/16)         |
| Percentage of LAC with up to date immunisations (L)   | 84.7%           | (+) | High       | 2015/16                  |  | 80.7%          | 80.7% (2014/15)             | 87.2% (2015/16)  | 87.2% (2015/16)        |
| Percentage of LAC who have had their teeth checked by a dentist (L)                             | 53.4%           | (-) | High       | 2015/16                  |  | 77.2%          | 77.2% (2014/15)             | 84.1% (2015/16)  | 77.8% (2015/16)        |
| Percentage of LAC who have had their annual health assessment (L)                               | 82.2%           | (+) | High       | 2015/16                  |  | 80.7%          | 80.7% (2014/15)             | 90.0% (2015/16)  | 89.4% (2015/16)        |
| Percentage of LAC whose development assessments are up to date (L)                              | 30.0%           | (-) | High       | 2015/16                  |  | 70.6%          | 70.6% (2014/15)             | 83.2% (2015/16)  | 58.0% (2015/16)        |
| Percentage of LAC identified as having a substance misuse problem (L)                           | 6%              | (-) | Low        | 2015/16                  |  | 3%             | 3.0% (2014/15)              | 4.0% (2015/16)   | 3.4% (2015/16)         |
| Percentage of Nottinghamshire LAC missing from placement by individual child (L)                | 7.5%            | (+) | Low        | 2015/16 Q4               |  | 8.5%           | 9.2% (2015/16)              | 9% (2015/16)     | 8.9% (2015/16)         |
| Percentage of Return Interviews completed within timescale (L)                                  | 53%             | (-) | High       | 2016/17 Q4               |  | 72%            | 55% (2015/16)               | –                | –                      |
| Percentage of LAC convicted or subject to a final warning or reprimand (L)                      | 0.0%            | (+) | Low        | 2015/16                  |  | 1.0%           | 1.0% (2014/15)              | 5% (2015/16)     | 3.9% (2015/16)         |
| Percentage of LAC achieving A*-C GCSEs in both English & Maths at KS4 (L)                       | 17.3%           | (+) | High       | 2016                     |  | 16.7%          | 16.7% (2015)                | 17.5% (2016)     | 16.3% (2016)           |
| Percentage of LAC achieving expected standard at KS1 in Reading (L)                             | 50%             | N/A | High       | 2016                     |  | not comparable |                             | 50% (2016)       | 48.9% (2016)           |
| Percentage of LAC achieving expected standard at KS1 in Writing (L)                             | 40%             | N/A | High       | 2016                     |  | not comparable |                             | 37% (2016)       | 38.9% (2016)           |
| Percentage of LAC achieving expected standard at KS1 in Maths (L)                               | 40%             | N/A | High       | 2016                     |  | not comparable |                             | 72% (2013/14)    | 71.8% (2013/14)        |
| Percentage of LAC achieving expected standard at KS2 in Reading (L)                             | 29%             | N/A | High       | 2016                     |  | not comparable |                             | 68% (2013/14)    | 63.3% (2013/14)        |
| Percentage of LAC achieving expected standard at KS2 in Writing (L)                             | 32%             | N/A | High       | 2016                     |  | not comparable |                             | 59% (2013/14)    | 55.5% (2013/14)        |

Page 15 of 46

| Key Performance Indicator  | Nottinghamshire |     |            |                          |  |                | Comparator Data             |                    |                        |
|--|-----------------|-----|------------|--------------------------|--|----------------|-----------------------------|--------------------|------------------------|
|  | Current Value   |     | Best to be | Current Reporting Period |  | Previous Value | Previous Annual Performance | National Average   | Statistical Neighbours |
| Percentage of LAC achieving expected standard at KS2 in Maths (L)  | 29%             | N/A | High       | 2016                     |  | not comparable |                             | 41% (2016)         | 39.1% (2016)           |
| Percentage of care leavers in education, employment or training aged 19-21 (L)   | 47.8%           | (+) | High       | 2016/17 Q4               |  | 47.7%          | 48.0% (2015/16)             | 49% (2015/16)      | 44.5% (2015/16)        |
| Percentage of care leavers in higher education aged 19-21 (L)  | 3.6%            | (-) | High       | 2016/17 Q4               |  | 5.0%           | 6.1% (2015/16)              | 7.0% (2015/16)     | 6.1% (2015/16)         |
| Percentage of LAC permanently excluded (L)   | 0.0%            | (=) | Low        | 2016                     |  | 0.0%           | 0.0% (2016)                 | 0.14% (2016)       | 0.0% (2016)            |
| Percentage of LAC with at least one fixed term exclusion (L)   | 9.7%            | (+) | Low        | 2016                     |  | 14.6%          | 14.6% (2016)                | 10.42% (2016)      | 10.4% (2016)           |
| Percentage of LAC classed as persistent absentees* (L)   | 6.8%            | (-) | Low        | 2016                     |  | 5.3%           | 9.0% (2016)                 | 9.1% (2016)        | 9.0% (2016)            |
| Percentage of LAC with an up-to-date Personal Education Plan (L)   | 73.4%           | (+) | High       | 2016/17 Q4               |  | 51.1%          | 62.6% (2015/16)             | —                  | —                      |
| Percentage of LAC who took up the opportunity to be consulted by their Independent Reviewing Officer (IRO) prior to the LAC Review Meeting (L) | 38.2%           | (+) | High       | 2016/17 Q4               |  | 37.4%          | 37.1% (2015/16)             | —                  | —                      |
| Percentage of LAC who felt their IRO involved them in the LAC Review they attended (L)   | 97.0%           | (-) | High       | Feb-16                   |  | 100.0%         | —                           | —                  | —                      |
| Percentage of LAC who felt listened to in the LAC Review they attended (L)   | 90.0%           | (-) | High       | Feb-16                   |  | 92%            | —                           | —                  | —                      |
| Percentage of LAC and care leavers who have completed a Listen to Me booklet (L)   | 29.6%           | (-) | High       | 2016/17 Q4               |  | 30.6%          | 31.0% (2015/16)             | —                  | —                      |
| Percentage of looked after children placed 20 miles or more from home (L)  | 14.9%           | (-) | Low        | 2016/17 Q4               |  | 13.3%          | 16% (2015/16)               | 14% (2015/16)      | 13.8% (2015/16)        |
| Average time between a child entering care and moving in with its adoptive family, for those adopted children (days)                           | 445             | (+) | Low        | 2016/17 Q4               |  | 573            | 585 days (2013-16)          | 593 days (2012-15) | 594 days (2012-15)     |
| Average time between a LA receiving court authority to place a child and deciding on a match to an adoptive family (days)                      | 137             | (+) | Low        | 2016/17 Q4               |  | 275            | 296 days (2013-16)          | 223 days (2012-15) | 231 days (2012-15)     |
| Looked after children with 3 or more placements in any one year (L)  | 10.2%           | (-) | Low        | 2016/17 Q4               |  | 8.8%           | 10.4% (2015/16)             | 10.0% (2014/15)    | 10.2% (2014/15)        |
| Percentage of looked after children remaining in long-term placements (L)  | 78.1%           | (=) | High       | 2016/17 Q4               |  | 78.1%          | 73.8% (2015/16)             | 68% (2014/15)      | 68% (2014/15)          |
| Percentage of care leavers in suitable accommodation (L)   | 83.8%           | (+) | High       | 2016/17 Q4               |  | 83.2%          | 79.5% (2015/16)             | 83% (2015/16)      | 79.3% (2015/16)        |
| Percentage of young people qualified to Level 3 (2 passes at A-Level or equivalent) by age 19  | 52.0%           | (+) | High       | 2015/16 academic         |  | 50.5%          | 50.5% (2014/15)             | 57.1% (2015/16)    | 55.8% (2015/16)        |
| Number of primary schools in an Ofsted category (Inadequate)   | 2               | (=) | Low        | 2016/17 Q4               |  | 2              | n/a                         | —                  | —                      |
| Number of secondary schools in an Ofsted category (Inadequate)   | 1               | (+) | Low        | 2016/17 Q4               |  | 3              | n/a                         | —                  | —                      |



| Key Performance Indicator   | Nottinghamshire |            |                          |                  |                             | Comparator Data     |                                 |
|---|-----------------|------------|--------------------------|------------------|-----------------------------|---------------------|---------------------------------|
|   | Current Value   | Best to be | Current Reporting Period | Previous Value   | Previous Annual Performance | National Average    | Statistical Neighbours          |
| Percentage of young people who have not attained a Level 2 qualification in English & maths at age 16 who go on to attain Level 2 or higher in both by the end of the academic year in which they turn 19 | 19.8%           | (+)        | High                     | 2015/16 academic | 16.9%                       | 16.9% (2014/15)     | 24.1% (2015/16) 23.5% (2015/16) |
| Participation in education, employment and training (EET) aged 16-17  | 96.9%           | (+)        | High                     | 2016/17 Q4       | 93.9%                       | 96.0% (2016/17 Q1)  | –                               |
| Percentage not in education, employment or training (NEET) aged 16-17   | 1.5%            | (+)        | Low                      | 2016/17 Q4       | 1.8%                        | 1.7% (2016/17 Q1)   | –                               |
| Percentage whose destination is not known aged 16-17  | 1.7%            | (+)        | Low                      | 2016/17 Q4       | 4.4%                        | 4.3% (2016-17 Q1)   | –                               |
| Percentage of children aged 0-4 living in low income areas registered with children's centres (snapshot)  | 100.0%          | (=)        | High                     | 2016/17 Q4       | 100.0%                      | 100% (2015/16 Q4)   | –                               |
| Percentage of children aged 0-4 living in low income areas seen at children's centres (cumulative)  | 73.4%           | (+)        | High                     | 2016/17 Q4       | 64.1%                       | 76.6% (2014/15 Q4)  | –                               |
| Percentage of two year olds taking up their free entitlement  | 75.0%           | (+)        | High                     | Spring Term 2017 | 66.0%                       | 66.0% (Spring 2016) | –                               |

## Appendix 1 - Indicators updated from previous report

### Children and Young People's Committee: Quarter 4 Performance for 2016/17

For Nottinghamshire, the performance data available at the end of quarter 2 2016/17 is reported. The most recent data for national average and children's services statistical neighbours is reported, where available. Please note, comparisons may be indicative only, as the reporting periods are not necessarily aligned. Where Nottinghamshire performance meets or exceeds the latest national performance information, this is highlighted by the emboldened boxes. Key: (p) = provisional data; (+) = better than previous value; (-) = worse than previous value; (=) = same as previous value; (n/a) = not comparable to previous value

| Key Performance Indicator  | Nottinghamshire |            |                          |                  |                             | Comparator Data  |                                 |
|--|-----------------|------------|--------------------------|------------------|-----------------------------|------------------|---------------------------------|
|  | Current Value   | Best to be | Current Reporting Period | Previous Value   | Previous Annual Performance | National Average | Statistical Neighbours          |
| Percentage of overall absence in primary, secondary and special schools                                      | 4.4%            | (+)        | Low                      | 2015/16 academic | 4.5%                        | 4.5%             | 4.6% (2015/16) 4.5% (2015/16)   |
| First time entrants to the Youth Justice System aged 10-17 (per 100,000) (cumulative)                        | 237             | (-)        | Low                      | 2016/17 Q3       | 147                         | 269              | 357 (2015/16) 269 (2014/15)     |
| Breastfeeding prevalence at 6-8 weeks, incl. mixed feeding methods (Nottinghamshire NHS)                     | 40.0%           | (-)        | High                     | 2016/17 Q2       | 40.1%                       | 37.7%            | 43.8% (2015/16) 43.2% (2015/16) |
| The number of new Education, Health and Care Plans finalised (a statutory requirement from 1 September 2014) | 39              | N/A        | N/A                      | 2016/17 Q4       | 49                          | 70               | –                               |

## Appendix 2 - Indicators that remain unchanged from previous report

| Children and Young People’s Committee: Quarter 4 Performance for 2016/17   |                 |     |            |                          |                |                             |                   |                        |
|--|-----------------|-----|------------|--------------------------|----------------|-----------------------------|-------------------|------------------------|
| For Nottinghamshire, the performance data available at the end of quarter 2 2016/17 is reported. The most recent data for national average and children’s services statistical neighbours is reported, where available. Please note, comparisons may be indicative only, as the reporting periods are not necessarily aligned. Where Nottinghamshire performance meets or exceeds the latest national performance information, this is highlighted by the emboldened boxes. Key: (p) = provisional data; (+) = better than previous value; (-) = worse than previous value; (=) = same as previous value; (n/a) = not comparable to previous value |                 |     |            |                          |                |                             |                   |                        |
| Key Performance Indicator  | Nottinghamshire |     |            |                          |                | Comparator Data             |                   |                        |
|  | Current Value   |     | Best to be | Current Reporting Period | Previous Value | Previous Annual Performance | National Average  | Statistical Neighbours |
| Early years foundation stage attainment (Reaching a 'Good Level of Development' - at least expected in all early learning goals in all prime areas and in the specific areas of literacy and mathematics)  | 67.1%           | (+) | High       | 2015/16 academic         | 65.3%          | 65.3%                       | 69.3% (2015/16)   | 67.6% (2015/16)        |
| Pupils achieving at least the expected standard in reading, writing & mathematics at age 11  | 53.8%           | n/a | High       | 2015/16 academic         | n/a            | n/a                         | 54% (2015/16)     | 53.3% (2015/16)        |
| Achievement of A*-C grades in GCSE English & maths   | 65.9%           | (+) | High       | 2015/16 academic         | 59.7%          | 59.7%                       | 63.3% (2015/16)   | 63.4% (2015/16)        |
| Percentage of A level entries at A*-E grades (p)   | 99.7%           | (+) | High       | 2015/16 academic         | 98.4%          | 98.4%                       | 98.8% (2015/16)   | –                      |
| Percentage of A level entries at A*-B grades (p)   | 48.9%           | (+) | High       | 2015/16 academic         | 46.5%          | 46.5%                       | 53.5% (2015/16)   | –                      |
| Primary schools judged by Ofsted as having good or outstanding standards of behaviour  | 93.4%           | (+) | High       | As at Sept 2015          | 92.7%          | n/a                         | 94.3% (Sept 2015) | 94.1% (Sept 2015)      |
| Secondary schools judged by Ofsted as having good/outstanding standards of behaviour   | 79.1%           | (-) | High       | As at Sept 2015          | 83.3%          | n/a                         | 85.1% (Sept 2015) | 84.2% (Sept 2015)      |
| Attainment gap for a good level of development in EYFSP between pupils taking free school meals and the rest   | 22.6%           | (+) | Low        | 2015/16 academic         | 27.6%          | 27.6%                       | 18.00%            | –                      |
| Attainment gap at age 11 between pupils taking free school meals and the rest ( <i>FSM during past six years</i> )   | 24.2%           | (+) | Low        | 2015/16 academic         | n/a            | n/a                         | 20.8% (2015/16 p) | –                      |
| Attainment gap at age 16 between pupils taking free school meals and the rest ( <i>FSM during past six years</i> )   | 30.2%           | (-) | Low        | 2015/16 academic         | 29.4%          | 29.4%                       | 26.9% (2015/16)   | –                      |
| Rate of permanent exclusions from school   | 0.03%           | (+) | Low        | 2014/15 academic         | 0.04%          | 0.04% (2013/14)             | 0.07% (2014/15)   | 0.08% (2014/15)        |
| Numbers of individual children and young people engaged in positive activities delivered by the Young People's Service (cumulative)  | 18,559          | (+) | High       | 2016/17 Q3               | 6103           | 24406                       | –                 | –                      |
| Numbers of children and young people accessing Outdoor and Environmental Education (cumulative)  | 24,513          | (+) | High       | 2016/17 Q3               | 8703           | 33871                       | –                 | –                      |
| Numbers exiting substance misuse treatment in a planned manner   | 95%             | (-) | High       | 2016/17 Q2               | 96%            | 96.00%                      | 79% (2015/16)     | –                      |
| Breastfeeding prevalence at 6-8 weeks, incl. mixed feeding methods (Bassetlaw NHS)   | 33.0%           | (=) | High       | 2015/16 Q4               | 33.0%          | 33.0%                       | 43.8% (2015/16)   | 43.2% (2015/16)        |

19 June 2017

Agenda Item: 6

**REPORT OF THE CORPORATE DIRECTOR****CHILDREN, FAMILIES AND CULTURAL SERVICES: DEPARTMENTAL  
PRIORITIES AND KEY ACTIONS FOR 2017/18****Purpose of the Report**

1. The purpose of this report is to seek approval of the Children, Families and Cultural Services department's priorities and key actions for the current year. These are set out on the poster attached as **Appendix 1**.

**Information and Advice**

2. As part of the Council's established business planning process, the department produces a number of annual service plans that collectively constitute the Council's service provision for children, young people and families. Individual service plans are framed around the department's overall vision and principles, which are themselves reviewed annually at the outset of the planning cycle. The service plans describe the detailed actions that will be undertaken over the coming year in pursuit of the outcomes that we aspire to achieve for children, young people and families.
3. The output from this process, including the key service level priorities for action, is summarised on the poster attached as **Appendix 1**, which acts as a departmental *business plan on a page*. It serves as an internal planning document, which is circulated to all staff and is displayed prominently in departmental bases around the County.
4. It aligns with the departmental performance indicator set that is reported on a quarterly basis to this Committee, and also with the Council-wide performance monitoring process that is reported to Policy Committee.
5. The key priorities for action also link into relevant partnership plans, such as the Nottinghamshire Safeguarding Children Board (NSCB) Business Plan and the Children, Young People and Families Plan which is managed through the Children's Trust Board.

**Other Options Considered**

6. No other options were considered; this is part of the Council-wide service planning process.

## **Reason/s for Recommendation/s**

7. To support the Committee's ongoing consideration of matters relating to the provision of services to children, young people and families across Nottinghamshire.

## **Statutory and Policy Implications**

8. This report has been compiled after consideration of implications in respect of crime and disorder, finance, human resources, human rights, the NHS Constitution (public health services), the public sector equality duty, safeguarding of children and adults at risk, service users, sustainability and the environment and ways of working and where such implications are material they are described below. Appropriate consultation has been undertaken and advice sought on these issues as required.

## **Financial Implications**

9. The department's vision and purpose reflect the reducing financial resources available to it.

## **Human Resources Implications**

10. Individual service plans and the department's key priorities for action reflect the resource availability and capacity to deliver them.

## **Safeguarding of Children and Adults at Risk Implications**

11. The department provides a range of specialist services to ensure that children and young people in Nottinghamshire receive the support and protection they need and will continue to ensure the most vulnerable children in the County are safe

## **Implications for Service Users**

12. One of the key principles for the department is to ensure that children and young people are engaged in the design and development of the services that the Council provides for them.

## **RECOMMENDATION/S**

- 1) That the Children, Families and Cultural Services department's priorities and key actions for the current year, attached as **Appendix 1**, be approved.

**Colin Pettigrew**

**Corporate Director for Children, Families and Cultural Services**

**For any enquiries about this report please contact:**

Jon Hawketts

Group Manager, Quality & Improvement

T: 0115 9773696

E: jon.hawketts@nottsgov.uk

**Constitutional Comments (LM 31/05/17)**

13. The recommendations in the report fall within the Terms of Reference of the Children and Young People's Committee.

**Financial Comments (SS 12/05/17)**

14. There are no financial implications arising directly from this report.

**Background Papers and Published Documents**

None

**Electoral Division(s) and Member(s) Affected**

All.

C0987



# Children, Families and Cultural Services (2017-2018)

***Our Purpose: We will make best use of our reducing resources to deliver our core integrated safeguarding, educational and health related services. We will focus upon safely meeting the needs of our most vulnerable children, young people and families.***

## **Our Principles:**

- *We will focus our education services on supporting and challenging schools to deliver high standards of attainment for all pupils*
- *We will focus our other services on children and families who are most vulnerable/at risk*
- *We will ensure that all of our intervention and programmes are based upon sound evidence of impact*
- *We will integrate and align our services, and make accessing them as easy as possible*
- *We will continue to intervene early where it is proved to be cost effective*
- *We will keep children safe, and together with their families where it is safe to do so*
- *We will ensure the voice of the child or young person is at the centre of children's services development and design*
- *We will deliver our services within the financial resources available to us*

## **We want to achieve the following outcomes:**

- *Children, young people and families accessing our case holding services will see improved outcomes as a result of high quality, consistent assessments, clear and achievable plans, and appropriate interventions*
- *Looked After Children and Care Leavers will be supported through improved placement provision, health services and learning opportunities*
- *Children and young people at risk of 'emerging threats' will be appropriately identified, supported and protected*
- *Children, young people and families will experience a seamless service when moving between Early Help and Children's Social Care*
- *Children, young people and families will benefit from a stable and skilled Children's Social Work workforce*
- *Children and young people and families will experience improved physical and mental health outcomes as a result of the development and re-commissioning of key services*
- *Children will be able to access sufficient early years and school places in their local communities*
- *More children and young people will attend good or better schools in Nottinghamshire compared to the national average*
- *Vulnerable children and young people will see their educational outcomes improve at a greater rate than others, will be less likely to be missing education, and will be more able to progress in to higher level education, employment and training*
- *Young people with disabilities will have improved pathways to support their preparation for adulthood*
- *Children and young people will be able to access a broad range of youth work led positive activities*

## **In pursuit of our desired outcomes during 2017-2018 we will:**

**March  
2018**

- Undertake reviews of "care for Looked After Children" and "social work practice" to ensure that we are delivering high quality social care at best value
- Establish a culture of embedding the use of assessment tools into front line practice
- Continue to deliver a comprehensive set of recruitment and retention activities to enable further reductions in the number and cost of social work agency staff
- Further improve the integration of social work and early help services so that families receive a more coordinated service and have the right level of support at the most appropriate time
- Continue to remodel our early help services, including youth services and children's centre provision
- Implement new duties to offer extended free childcare to all 3 and 4 year olds from working households, whilst continuing to offer free childcare for 2 year olds from low income households
- Review and implement a revised short-break offer in Nottinghamshire for children and young people with disabilities
- Co-ordinate the delivery of a multi-agency SEND Strategic Action Plan, ensuring the continuous improvement of services for children and young people with SEND and their families
- Remodel our commissioning arrangements for vulnerable children and young people's education and care provision
- Implement a newly commissioned Healthy Families Programme for 0-19 year olds and their families
- Working with CCGs, continue to transform our specialist community health services for children and young people (CCYPS)
- Implement the Future in Mind Plan to improve services for children and young people with emotional and mental health difficulties
- Continue to implement the Young People's Health Strategy
- Continue to develop an effective working relationship and shared understanding with all schools and the Regional Schools Commissioner to raise standards of attainment and improve pupils' progress in all Nottinghamshire Schools
- Continue to implement the Closing the Gaps Strategy to improve attainment and progress for vulnerable children and young people identified by the *East Midlands Challenge*
- Implement the recommended actions from the Post-16 Area Based Review
- Ensure that we continue to meet the requirements of external inspection frameworks across children's services

**April  
2017**





**19 June 2017****Agenda Item: 7****REPORT OF THE INTERIM DIRECTOR, EDUCATION, LEARNING AND  
SKILLS****EXCEPTIONAL PAYMENTS FOR SCHOOL CLOTHING AND FOOTWEAR  
2017/2018****Purpose of the Report**

1. This report seeks approval to continue to adopt an agreed scale of payments for school clothing and footwear allowances paid under the category of exceptional circumstances, subject to discretion.

**Information and advice**

2. School clothing allowances are discretionary and any allowance scheme must be funded by the County Council. Discretionary school clothing allowance has not been available since 2010/2011 for families living in Nottinghamshire. However, the County Council retains discretion to consider requests from families for support with clothing and footwear under exceptional circumstances. Discretionary payments of £275 were made during the 2016/2017 financial year.
3. In order not to fetter its discretion, the County Council must consider, under Section 510 of the Education Act 1996 and Section 2 of the Local Government Act 2002, requests for assistance from families in exceptional circumstances. This applies to all school age children and to families living outside the County if their children attend County schools.
4. Exceptional circumstances are defined as “families who have experienced and can demonstrate severe hardship which has resulted in the family being unable to afford the cost of school uniform and where this affects the ability of the children attending school”. Included in this category would be families who have lost clothes in a fire, a flood, theft, have been made homeless or are fleeing domestic violence.
5. In order to ensure that there is consistency and fairness in the amounts paid out under the category of exceptional circumstances, it is proposed to continue to adopt, as a guide only, a scale of payments up to a maximum allowance of £50 per qualifying pupil:
  - 25% of the full allowance to infant school children
  - 50% of the full allowance to junior school and year 11 children
  - 75% of the full allowance to other secondary school children.

6. This is a guide only, as the County Council must consider the circumstances of individual cases in order not to fetter its discretion.

### **Other Options Considered**

7. No other options have been considered.

### **Reason/s for Recommendation/s**

8. In line with the County Council's financial regulations, school clothing and footwear allowances are reviewed annually and as explained in this report it is proposed to continue to provide a fair and consistent approach for determining the amount of allowances paid under the exceptional circumstances category.

### **Statutory and policy implications**

9. This report has been compiled after consideration of implications in respect of finance, the public sector equality duty, human resources, crime and disorder, human rights, the safeguarding of children, sustainability and the environment and those using the service and where such implications are material they are described below. Appropriate consultation has been undertaken and advice sought on these issues as required.

### **Public Sector Equality Duty Implications**

10. The provision of clothing and footwear allowances remains an important element of the County Council's overall programme to overcome social and educational disadvantage and the County Council will continue to consider requests for provision of clothing assistance support for pupils from financially disadvantaged backgrounds in exceptional cases.

## **RECOMMENDATION/S**

- 1) That approval is given to continue to apply, as a guide only, a scale of payments for allowances granted under the exceptional circumstances category up to a maximum of £50 per qualifying pupil: 25% of the full allowance for infant school children, 50% of the full allowance for junior school and year 11 children and 75% of the full allowance for other secondary school children. Individual circumstances will be taken into consideration when determining the amount.

**Marion Clay**  
**Interim Director, Education, Learning and Skills**

**For any enquiries about this report please contact:**

Linda Foster  
Acting Group Manager, Support to Schools Service  
T: 0115 9772032  
E: [linda.foster@nottsgov.uk](mailto:linda.foster@nottsgov.uk)

### **Constitutional Comments (LM 12/05/17)**

11. The recommendations in the report fall within the Terms of Reference of the Children and Young People's Committee.

### **Financial Comments (SS 12/05/17)**

12. As the recommendation is to continue with existing arrangements, there are no financial implications arising directly from this report.

### **Background Papers and Published Documents**

Except for previously published documents, which will be available elsewhere, the documents listed here will be available for inspection in accordance with Section 100D of the Local Government Act 1972.

<http://www.nottinghamshire.gov.uk/education/financial-support/financial-support>

### **Electoral Division(s) and Member(s) Affected**

All.

C0977



**19 June 2017****Agenda Item: 8****REPORT OF THE SERVICE DIRECTOR, YOUTH, FAMILIES AND SOCIAL  
WORK****COUNTY CAMHS LOOKED AFTER AND ADOPTION TEAM - SERVICE  
PROVISION AND DEVELOPMENTS 2016/17****Purpose of the Report**

1. To provide an update on the work and service developments of the County Child and Adolescent Mental Health Service (CAMHS) Looked After and Adoption Team.

**Information and Advice****Introduction**

2. The County CAMHS Children Looked After & Adoption Team was established in 2001, restructured in 2007, and has developed into the service currently offered. CAMHS provides a service for children aged 0 - 18 years, where there are concerns about their emotional well being or mental health.
3. The County Children Looked After and Adoption Team is jointly commissioned by Nottinghamshire County Council and Nottinghamshire NHS Foundation Trust. The team is based within the Specialist CAMHS Service, Specialist Service Directorate, Nottinghamshire NHS Foundation Trust.

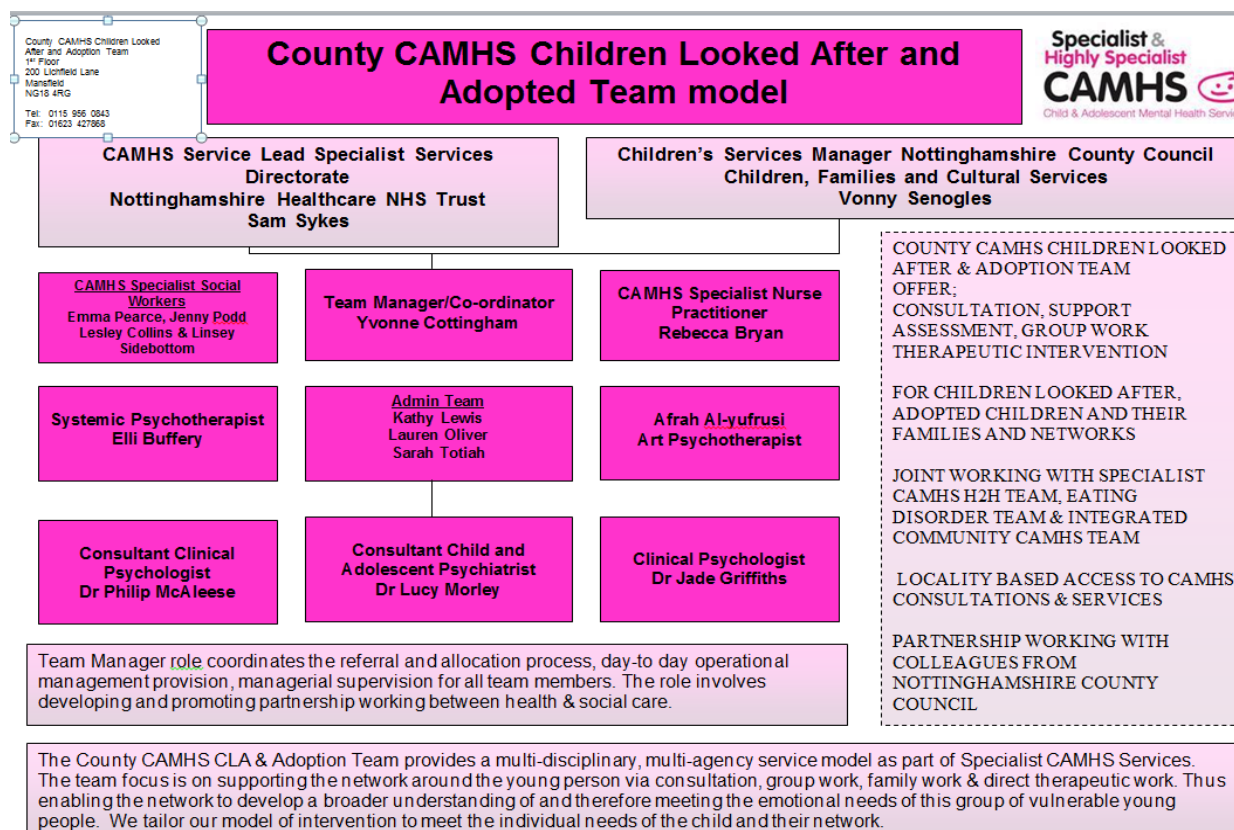
**Aims of the service**

4. The team is commissioned to specifically support children and young people aged 0-18 years, who are looked after and living away from their birth parents, in the care of Nottinghamshire Children's Services. These children and young people may be living with foster carers or living in residential care. The team also offers specialist consultation and support to children/young people who have been adopted and their families.
5. It is a multi-disciplinary, multi-agency team whose purpose is to assess the mental health needs, promote the psychological wellbeing and placement stability of:
  - young people within Nottinghamshire who are living with foster carers or living in residential care
  - young people who have been adopted, and their families, or for whom adoption is being explored / planned

- young people who are looked after or adopted and placed in Nottinghamshire by other local authorities/Health Trusts.

## Team structure

6. As illustrated in the Team Model below, the team is multi-agency and multi-disciplinary; it is made up of professionals, some of whom are employed by Nottinghamshire NHS Trust and others by Nottinghamshire County Council, who have undertaken different types of training. The team is supported by an administration team and led by a Team Manager Coordinator employed by Nottinghamshire County Council.



## Referral Data CAMHS Children Looked After and Adoption Team

7. Data for CAMHS Children Looked After (CLA) and Adoption Team is included in the monthly data set report to the CAMHS Clinical Commissioning Group (CCG). The referral data for 2016/17 is listed below. Referrals are risk assessed and any urgent self-harm referrals are seen by the CAMHS Crisis Team; the CAMHS CLA service offer is a follow-up community appointment within 7 days.

|                   |                         |                     |
|-------------------|-------------------------|---------------------|
| Quarter 1 2016/17 | CAMHS CLA team received | <b>84 referrals</b> |
| Quarter 2 2016/17 | CAMHS CLA team received | <b>69 referrals</b> |
| Quarter 3 2016/17 | CAMHS CLA team received | <b>64 referrals</b> |

## **Service Provision:**

### **Pathway to access a service from CAMHS CLA & Adoption Team**

8. An initial CAMHS consultation with the young person's social worker is the pathway to accessing a service from the CAMHS CLA and Adoption Team. The expectation is that the young person's social worker completes a consultation request form and books into one of the initial consultations. These appointments are offered weekly and are accessible to social workers via booking in with a named business support person within their own team. Following the appointment the CAMHS clinicians will provide a written record detailing the ongoing CAMHS plan. This information is also shared with the child/young person's GP and the Designated Nurse for Children in Care.
9. The three local authority specialist residential homes, Lyndene, Oakhurst and West View, access monthly CAMHS consultation appointments attended by the staff team and social workers who have young people placed there.

### **CAMHS Initial Interventions**

10. The initial consultation with the social worker focuses on the experiences of the young person before they entered care, as well as the ongoing impact of such experiences and presenting symptomatology. Following this a further consultation will be arranged and may include the foster carers, the young person, education staff and/or other relevant people from the young person's network.
11. The model of intervention is tailored to meet the individual needs of the young person and their network, based on the evidence base: NICE (National Institute for Health and Care Excellence) guidelines; the views and skills of the client and their family/foster carers; and practice based evidence. Consultation can function to encourage all members of the network to remain fully engaged in improving the quality of life of the young person.

### **CAMHS Ongoing Interventions**

12. Dependent on the outcome of the initial and follow up appointment, the plan may be for CAMHS involvement to be: ongoing consultation to the network; specialist diagnostic assessments; prescribing and reviewing medication. Additional integrative interventions may then be introduced over time to carers and young people. These could be Theraplay, Dyadic Developmental Psychotherapy (DDP), Art Psychotherapy, Systemic Psychotherapy, fostering attachments group, therapeutic parenting or further assessment.
13. Therapeutic Interventions with young people include assessment, self-harm follow up and Psychotherapy/Psychological/Systemic Integrative Interventions. Self-Help, Psycho-Social education, Distress Tolerance Skills Dialectical Behavioural Therapy and Cognitive Behavioural Therapy are also offered when assessed as appropriate to meet the formulated need.

## **Skills training for wider LAC workforce**

### **Foster Care**

14. The Fostering Attachments group is a 10 week therapeutic group for foster carers who are parenting a child who has difficulties that are understood as related to attachment. This 10 week Fostering Attachments group was developed over the period of 2011 to 2014 through running four pilot groups and adaptations being made based on feedback received from carers who participated. Following the four pilot groups, this 10 week group has to date been rolled out at a variety of countywide locations.
15. All of the carers in the group have a child (or children) who have been referred to CAMHS and the child's main area of difficulty is in utilising attachment strategies in a way that leads to challenges within a family environment. Invitation to join the group is offered to both in-house and IFA foster carers who the Council is currently working with, who it is felt would gain further knowledge and experience from working in a group setting. The data collated from the groups completed so far using the Parenting Stress Index (PSI) Strengths & Difficulties Questionnaires (SDQ) Carer Questionnaires is available on request.
16. The aims of the group are:
  - to provide support to carers who can feel very isolated caring for children with attachment difficulties
  - to increase understanding of the children and their behavioural and emotional needs through an increase in understanding of attachment theory and its application to the parenting of the children
  - to increase the skill and confidence of carers
  - the training is based on Kim Golding's House Model of Parenting with a focus on the importance of providing a secure base for the child. It involves information and training on attachment theory as well as considering principles of therapeutic parenting and how these can be implemented to support a child's emotional development and wellbeing alongside behaviour management.
17. Approximately six groups are now run by the County CAMHS CLA & Adoption Team per year, each in a different geographical location in Nottinghamshire. This allows easier access to the groups for carers, but also invites carers who live geographically close to one another to meet and develop fostering networks and thus support. Supervising social workers are invited to attend a three hour overview of the content of the group so that the support they offer foster carers can complement the attachment model.

### **Qualitative Feedback**

18. Each foster carer was given an evaluation form that offered them the opportunity to make anonymous qualitative comments about their experience of the Fostering Attachments group. Below are some of the comments that were received:

*"It has been particularly useful to have the course spread over so many weeks – this has given us time to reflect and ask questions".*



*"The course has helped me to understand all of our [foster] children and why they exhibit the behaviours they do".*

*"I found the Theraplay session particularly useful".*

*"I have felt very listened to, and not judged".*

*"Really useful advice given for the children we look after".*

*"It has been particularly helpful meeting other foster carers who have similar experiences."*

*"This is the best and most relevant course that I have attended in relation to being a foster carer."*

*"All foster carers should be made aware of attachment disorder. Social workers should have this training too".*

*"I now understand why my foster child presents in particular ways or has certain traits and behaviours."*

*"It will help me in the future with the challenges we face".*

*"This would be a very useful course for New Foster carers".*

*"I found learning to connect with the kids instead of just correcting them particularly useful".*

*"It was particularly useful knowing you're not alone and other carers go through the same".*

*"This course has exceeded my expectations. I had a decent understanding of therapeutic parenting already but this course has enhanced this knowledge. I feel more confident".*

*"Understanding how the brain works has changed my understanding of temper tantrums".*

## **Summary**

19. Overall the evaluation of the six Fostering Attachment groups run over 2016 suggests that it has been beneficial for the foster carers that have attended. Following the Fostering Attachments group, carers reported that their experience of caring for their child was on the whole more positive. Carers have consistently reported increased understanding of their children's difficulties and an improved relationship with their child following the group. Carers have also reported greater confidence and skills in managing their children and following the group they have tended to rate their children as "less difficult" to care for. Carers have suggested that they have valued the group and have found it very helpful.

## **Nottinghamshire Foster Carers Induction Training**

20. Along with colleagues from the CIC Health Team, CIC No Labels and the Virtual School, the service also attends and presents at the Foster Carers Induction training which takes place three times per year.

## **Residential Care Block Purchase**

21. The Service Manager for CAMHS and Residential Services chairs the matching panel process that has been initiated since the block purchase of residential care. Panel members include a member of the Placements team, registered managers from the Council's mainstream residential homes, team manager of the CAMHS CLA team and the relevant personnel from partners involved in the residential block purchase. The aim of the matching panel is to ensure that the presenting difficulties and placement needs of young people are shared and considered by the Council and its partners prior to a placement being agreed.

## **Other Options Considered**

22. This report is for noting only.

## **Reason/s for Recommendation/s**

23. This report is for noting only.

## **Statutory and Policy Implications**

24. This report has been compiled after consideration of implications in respect of crime and disorder, finance, human resources, human rights, the NHS Constitution (Public Health only), the public sector equality duty, safeguarding of children and vulnerable adults, service users, sustainability and the environment and ways of working and where such implications are material they are described below. Appropriate consultation has been undertaken and advice sought on these issues as required.

## **RECOMMENDATION/S**

- 1) That the update on the work and service developments of the County CAMHS Looked After and Adoption team be noted.

**Steve Edwards**  
**Service Director, Youth, Families and Social Work**

**For any enquiries about this report please contact:**

Vonny Senogles  
Service Manager, Residential Services and CAMHS  
T: 07974235931  
E: vonny.senogles@nottscc.gov.uk

**Constitutional Comments**

25. As this report is for noting only, no Constitutional Comments are required.

**Financial Comments (SS 12/05/17)**

26. There are no financial implications arising directly from this report.

**Background Papers and Published Documents**

None.

**Electoral Division(s) and Member(s) Affected**

All.

C0985



**19 June 2017**

**Agenda Item: 9**

## **REPORT OF THE INTERIM DIRECTOR, EDUCATION, LEARNING AND SKILLS**

### **LOCAL AUTHORITY GOVERNOR APPOINTMENTS TO SCHOOL GOVERNING BODIES DURING THE PERIOD 1 MARCH TO 10 APRIL 2017**

#### **Purpose of the Report**

1. To note the appointment of Local Authority (LA) governors to school governing bodies for the period 1 March to 10 April 2017.
2. To note the appointment of Additional Local Authority governors to the governing body of Awsworth Primary School.

#### **Information and Advice**

3. Under the School Governance (Constitution) (England) Regulations 2012, as amended by the School Governance (Constitution and Federations) (England) Amendment Regulations 2014, governing bodies of maintained schools were required to reconstitute to a skills-based model of governance by September 2015, and are allowed one LA governor on the reconstituted governing body. For this model of governance, governing bodies may set eligibility criteria for, and appoint, the Local Authority governor.
4. Under these Regulations the County Council is responsible for nominating individuals as prospective governors. Nominations are made by the County Council, in accordance with the eligibility criteria provided by the governing body. When nominating new governors or re-nominating existing governors, the County Council must consider the skills and experience the governing body needs in order to be effective.
5. Local Authority governors nominated by the County Council and appointed by school governing bodies during the period 1 March to 10 April 2017 are as follows:

|                  |                     |
|------------------|---------------------|
| <b>ASHFIELD</b>  |                     |
| Kingsway Primary | Mrs Elsie Wilkinson |
| <b>BROXTOWE</b>  |                     |
| Beeston Rylands  | Mr Michael Jackson  |

|                                |                       |
|--------------------------------|-----------------------|
| <b>MANSFIELD</b>               |                       |
| Berry Hill Primary and Nursery | Mr Gordon Taylor      |
| Sutton Road Primary            | Mrs Leigh-Ann Higgins |
| <b>NEWARK</b>                  |                       |
| Sutton on Trent Primary        | Mrs Rebecca Jackson   |

6. The appointment of Additional Local Authority governors to the governing body of Awsworth Primary School are as follows:

|                  |                     |
|------------------|---------------------|
| <b>BROXTOWE</b>  |                     |
| Awsworth Primary | Mr Simon Massarella |
| Awsworth Primary | Mrs Judith Munro    |

### **Other Options Considered**

7. Nottinghamshire County Council's strategy for recruiting and retaining school governors includes the re-appointment of existing governors. The County Council sees many advantages in retaining experienced governors and actively seeks to encourage governors approaching their end of term of office to stand again either in the same school or in a different school. The appointments made ensure the retention and supply of experienced governors.

### **Reason/s for Recommendation/s**

8. This report is for noting only

### **Statutory and Policy Implications**

9. This report has been compiled after consideration of implications in respect of crime and disorder, finance, human resources, human rights, the NHS Constitution (public health services), the public sector equality duty, safeguarding of children and adults at risk, service users, sustainability and the environment and ways of working and where such implications are material they are described below. Appropriate consultation has been undertaken and advice sought on these issues as required.

### **RECOMMENDATION/S**

- 1) That the Committee notes the appointment of Local Authority and Additional Local Authority governors to school governing bodies during the period 1 March to 10 April 2017 as listed in paragraphs 5 and 6.

**Marion Clay**  
**Interim Director, Education, Learning and Skills**

**For any enquiries about this report please contact:**

Jane Mansell  
 Acting Team Manager, Governor Services

T: 0115 8040628/07860 597832  
E: jane.mansell@nottsccl.gov.uk

### **Constitutional Comments**

10. As this report is for noting only, no Constitutional Comments are required.

### **Financial Comments (SS 12/05/17)**

11. There are no financial implications arising directly from this report.

### **Background Papers and Published Documents**

None.

### **Electoral Division(s) and Member(s) Affected**

Kirkby North  
Beeston Central and Rylands  
Mansfield South  
Mansfield West  
Muskham and Farnsfield  
Stapleford and Broxtowe Central

Cllr John Knight  
Cllr Kate Foale  
Cllr Stephen Garner and Cllr Andy Sissons  
Cllr Paul Henshaw and Cllr Diana Meale  
Cllr Bruce Laughton  
Cllr John Doddy and Cllr John Longdon

C0988





**19 June 2017****Agenda Item: 10**

## **REPORT OF CORPORATE DIRECTOR, RESOURCES**

### **WORK PROGRAMME**

#### **Purpose of the Report**

1. To consider the Committee's work programme for 2017-18.

#### **Information and Advice**

2. The County Council requires each committee to maintain a work programme. The work programme will assist the management of the committee's agenda, the scheduling of the committee's business and forward planning. The work programme will be updated and reviewed at each pre-agenda meeting and committee meeting. Any member of the committee is able to suggest items for possible inclusion.
3. The attached work programme has been drafted in consultation with the Chairman and Vice-Chairman, and includes items which can be anticipated at the present time. Other items will be added to the programme as they are identified.
4. As part of the transparency introduced by the new committee arrangements, committees are expected to review day to day operational decisions made by officers using their delegated powers. It is anticipated that the committee will wish to commission periodic reports on such decisions. The committee is therefore requested to identify activities on which it would like to receive reports for inclusion in the work programme. It may be that the presentations about activities in the committee's remit will help to inform this.

#### **Other Options Considered**

4. None.

#### **Reason for Recommendation**

5. To assist the committee in preparing its work programme.

## **Statutory and Policy Implications**

6. This report has been compiled after consideration of implications in respect of finance, equal opportunities, human resources, crime and disorder, human rights, the safeguarding of children, sustainability and the environment and those using the service and where such implications are material they are described below. Appropriate consultation has been undertaken and advice sought on these issues as required.

## **RECOMMENDATION**

That the committee's work programme be noted and consideration be given to any changes which the committee wishes to make

**Jayne Francis-Ward**  
**Corporate Director, Resources**

**For any enquiries about this report please contact:**

Alison Fawley  
Democratic Services Officer  
T: 0115 993 2534  
E: [alison.fawley@nottsc.gov.uk](mailto:alison.fawley@nottsc.gov.uk)

## **Constitutional Comments (HD)**

7. The Committee has authority to consider the matters set out in this report by virtue of its terms of reference.

## **Financial Comments (NS)**

8. There are no direct financial implications arising from the contents of this report. Any future reports to Committee on operational activities and officer working groups, will contain relevant financial information and comments.

## **Background Papers**

None

## **Electoral Division(s) and Member(s) Affected**

All.

## **CHILDREN & YOUNG PEOPLE'S COMMITTEE - WORK PROGRAMME 2017-18**

| <b>REPORT TITLE</b>  | <b>BRIEF SUMMARY OF AGENDA ITEM</b>                    | <b>LEAD OFFICER</b> | <b>REPORT AUTHOR</b>                    |
|--|--|---------------------|---|
| <b>17 July 2017</b>  |  |                     |   |
| Amalgamation of Meadow Lane Infant and College House Junior schools                | For decision   | Marion Clay         | Jonathan Smith                          |
| Update on outcomes of Ofsted inspections of schools                                |  | Marion Clay         | Linda Foster                            |
| BioMass boiler remedial works – progress report                                    | For noting   | Jas Hundal          | Sara Williams                           |
| Revised charges for Chaperone and Child Entertainment licences                     | For decision   | Steve Edwards       | Laurence Jones                          |
| Troubled Families Programme in Nottinghamshire – six-month update                  | Six monthly update report                              | Steve Edwards       | Laurence Jones                          |
| Unaccompanied asylum seeking children  |  | Steve Edwards       | Natasha Wrzesinski                      |
| Looked After Children and Care Leavers Strategy 2015-18 – annual progress report   | Annual report  | Steve Edwards       | Amanda Collinson/<br>Natasha Wrzesinski |
| Principal Child and Family Social Worker - annual report 2016                      | For information  | Steve Edwards       | Diana Bentley                           |
| End of year report for the Independent Reviewing Officer service                   | For information  | Steve Edwards       | Izzy Martin                             |
| Fostering Service annual report  | For information  | Steve Edwards       | Naomi Sills                             |
| Rota visits to children's homes – Spring 2017                                      | Six monthly report                                     | Steve Edwards       | Vonny Senogles                          |
| <b>18 September 2017</b>   |  |                     |   |
| Performance reporting (Quarter 1 2017/18) – Services for Children and Young People | Quarterly performance report (includes Virtual School) | Celia Morris        | Matt Garrard                            |
| Update on regulated inspections  |  | Derek Higton        | Natasha Wrzesinski                      |
| Schools Policy & Place Planning Strategy   |  | Marion Clay         | Linda Foster                            |
| Post 16 area based review  | For noting   | Marion Clay         | Marion Clay                             |
| Child Sexual Exploitation and Children Missing from Home and Care: update          | Six-monthly update                                     | Steve Edwards       | Pam Rosseter                            |

| REPORT TITLE  | BRIEF SUMMARY OF AGENDA ITEM          | LEAD OFFICER  | REPORT AUTHOR                  |
|---|---------------------------------------|---------------|--------------------------------|
| Commissioning of an Information, Advice & Support service in partnership with Nottingham City Council | For decision                          | Derek Highton | Louise Benson/ Chris Jones     |
| Children & Young People's Mental Health & Wellbeing Transformation Plan                               | Six-monthly report back on progress   | Kate Allen    | Kate Allen/<br>Lucy Peel       |
| Children's Workforce Health Check Survey 2016-17  |                                       | Derek Highton | Liz Maslen                     |
| Nottinghamshire Childcare Sufficiency Assessment 2017   |                                       | Steve Edwards | Laurence Jones                 |
| Local Authority governor appointments/ reappointments to school governing bodies                      | Quarterly report on appointments made | Marion Clay   | Jane Mansell                   |
| <b>16 October 2017</b>  |                                       |               |                                |
| Nottinghamshire Safeguarding Children Board annual report 2016/17                                     | Annual report                         | Steve Edwards | Steve Baumber                  |
| School Capital Programme progress report  | Six month update report               | Jas Hundal    | Sara Williams                  |
| Special Educational Needs and Disability Reforms 'New Burdens' Grants 2016/17 and 2017/18 – progress  | Report back on spend & activities     | Derek Highton | Jill Norman                    |
| Penalty notices - update on attendance and enforcement  |                                       | Steve Edwards | Laurence Jones                 |
| Multi-Agency Safeguarding Hub - review  |                                       | Steve Edwards | Holly Smitheman                |
| Nottinghamshire Early Years Improvement Plan 2015-17 – annual update & proposed future plan           |                                       | Derek Highton | Irene Kakoullis                |
| <b>20 November 2017</b>   |                                       |               |                                |
| Performance reporting (Quarter 2 2017/18) – Services for Children and Young People                    | Quarterly performance report          | Celia Morris  | Matt Garrard                   |
| Children Missing Education  |                                       | Marion Clay   | Linda Foster/<br>Karen Hughman |
| <b>18 December 2017</b>   |                                       |               |                                |
| Nottinghamshire Outstanding Achievement 4Uth Award 2017   | Annual update report                  | Derek Highton | Pom Bhogal                     |

| REPORT TITLE  | BRIEF SUMMARY OF AGENDA ITEM          | LEAD OFFICER    | REPORT AUTHOR                          |
|---|---------------------------------------|-----------------|--|
| Children, Young People and Families Plan 2016-18 - annual update                                | Annual update report                  | Derek Highton   | Sean Kelly                             |
| Troubled Families Programme in Nottinghamshire – six-month update                               | Six monthly update report             | Steve Edwards   | Laurence Jones                         |
| National Children and Adult Services Conference 2017  | Report back on attendance             | Colin Pettigrew | Colin Pettigrew/<br>Natasha Wrzesinski |
| Local Authority governor appointments/<br>reappointments to school governing bodies             | Quarterly report on appointments made | Marion Clay     | Jane Mansell                           |
| <b>15 January 2018</b>  |                                       |                 |  |
| Financial support for students in post-16 education   | Annual determination                  | Marion Clay     | Linda Foster                           |
| Exceptional payments for school clothing and footwear 2017/18                                   | Annual determination                  | Marion Clay     | Linda Foster                           |
| Child Sexual Exploitation and Children Missing from Home and Care: update                       | Six-monthly update                    | Steve Edwards   | Pam Rosseter                           |
| Rota visits to children's homes: Autumn 2017  | Six monthly report                    | Steve Edwards   | Vonny Senogles                         |
| <b>12 February 2018</b>   |                                       |                 |  |
| Performance reporting (Quarter 3 2017/18) – Services for Children and Young People              | Quarterly performance report          | Celia Morris    | Matt Garrard                           |
| Home to school and Post 16 Transport policies 2019-20   |                                       | Marion Clay     | Dave Litchfield                        |
| Nottinghamshire School Admission Arrangements 2019/20   |                                       | Marion Clay     | Mary Kiely                             |
| <b>19 March 2018</b>  |                                       |                 |  |
| Performance figures for Nottinghamshire schools, academies and colleges – academic year 2016/17 | For information                       | Marion Clay     | Linda Foster                           |
| Children & Young People's Mental Health & Wellbeing Transformation Plan                         | Six-monthly report                    | Kate Allen      | Kate Allen/<br>Lucy Peel               |
| School Capital Programme progress report  | Six month update report               | Jas Hundal      | Sara Williams                          |
| National Minimum Fostering Allowances and Fees to Foster Carers                                 | Annual determination                  | Steve Edwards   | Naomi Sills/<br>Tara Pasque            |

| REPORT TITLE   | BRIEF SUMMARY OF AGENDA ITEM          | LEAD OFFICER  | REPORT AUTHOR                           |
|--|---------------------------------------|---------------|---|
| Schools Forum and Education Trust Board officer group report                             | Annual officer group report           | Marion Clay   | Marion Clay                             |
| Local Authority governor appointments/ reappointments to school governing bodies         | Quarterly report on appointments made | Marion Clay   | Jane Mansell                            |
| <b>23 April 2018</b>   |                                       |               |   |
| <b>21 May 2018</b>   |                                       |               |   |
| Performance reporting (Quarter 4 2017/18) – Services for Children and Young People       | Quarterly performance report          | Celia Morris  | Matt Garrard                            |
| <b>18 June 2018</b>  |                                       |               |   |
| Troubled Families Programme in Nottinghamshire – six-month update                        | Six monthly update report             | Steve Edwards | Laurence Jones                          |
| Principal Child and Family Social Worker - annual report 2017                            | For information                       | Steve Edwards | Diana Bentley                           |
| Local Authority governor appointments/ reappointments to school governing bodies         | Quarterly report on appointments made | Marion Clay   | Jane Mansell                            |
| <b>16 July 2018</b>  |                                       |               |   |
| Nottinghamshire Childcare Sufficiency Assessment 2018                                    |                                       | Steve Edwards | Laurence Jones                          |
| Child Sexual Exploitation and Children Missing from Home and Care: annual report 2016/17 |                                       | Steve Edwards | Pam Rosseter                            |
| Children's Workforce Health Check Survey 2017-18   |                                       | Derek Higton  | Liz Maslen                              |
| Looked After Children and Care Leavers Strategy 2015-18 – annual progress report         | Annual report                         | Steve Edwards | Amanda Collinson/<br>Natasha Wrzesinski |
| Rota visits to children's homes: Spring 2018   | Six monthly report                    | Steve Edwards | Vonny Senogles                          |
| <b>To be placed</b>  |                                       |               |   |
| Review of the Schools Swimming Service offer   |                                       | Steve Edwards | Laurence Jones                          |
| Short Breaks offer – outcome of review   |                                       | Derek Higton  | Jill Norman                             |
| Progress with Special Educational Needs & Disability Strategy and Action Plan            |                                       | Derek Higton  | Jill Norman                             |