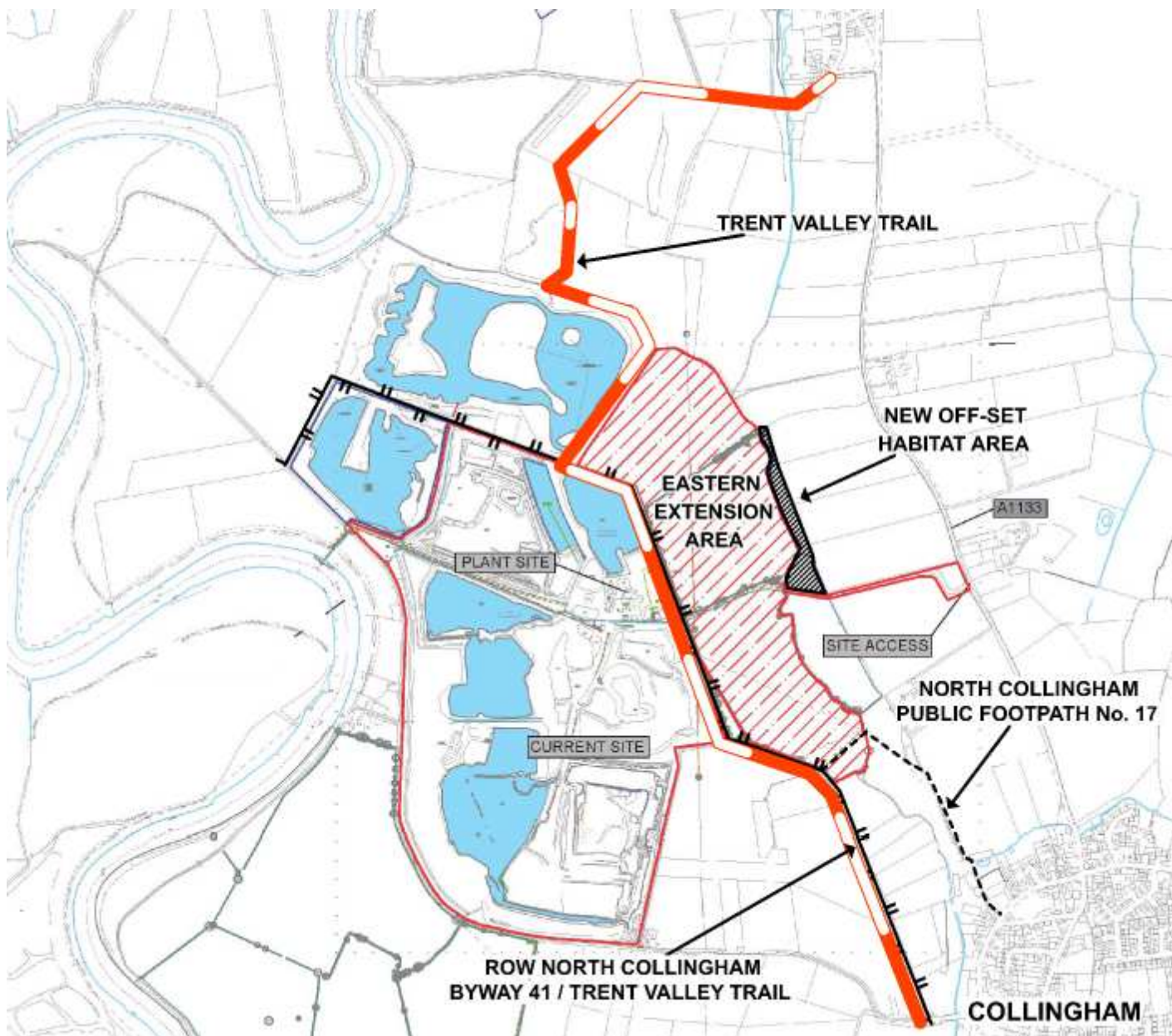


**PLANNING APPLICATION
3/19/01929/CMM**

**EASTERN EXTENSION TO
BESTHORPE QUARRY, (WITH
RETENTION OF EXISTING PLANT
SITE, ACCESS AND ANCILLIARY
FACILITIES) ALONG WITH
RESTORATION TO WATER BASED
NATURE CONSERVATION**



**Nottinghamshire
County Council**



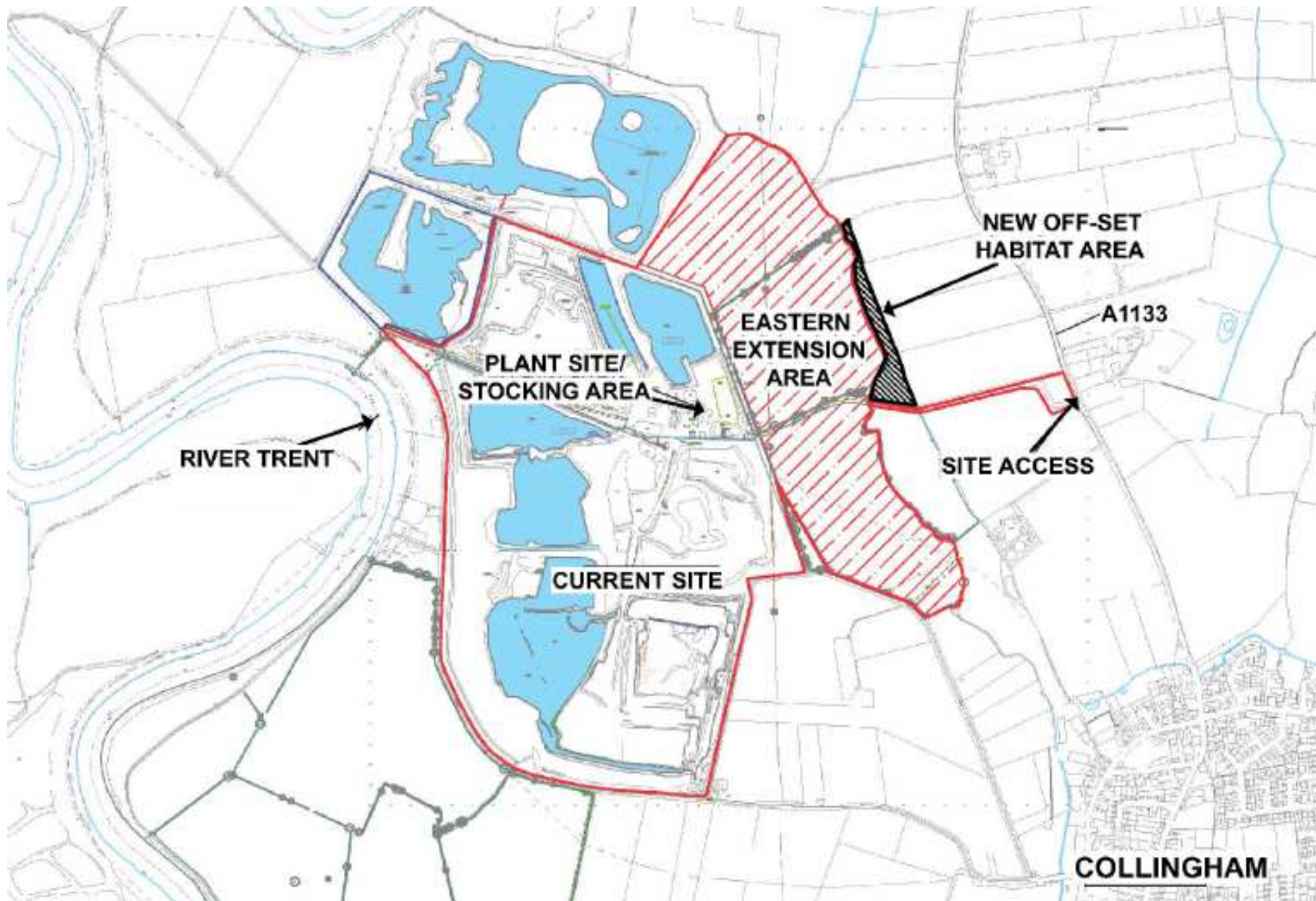
**Nottinghamshire
County Council**

Besthorpe Quarry



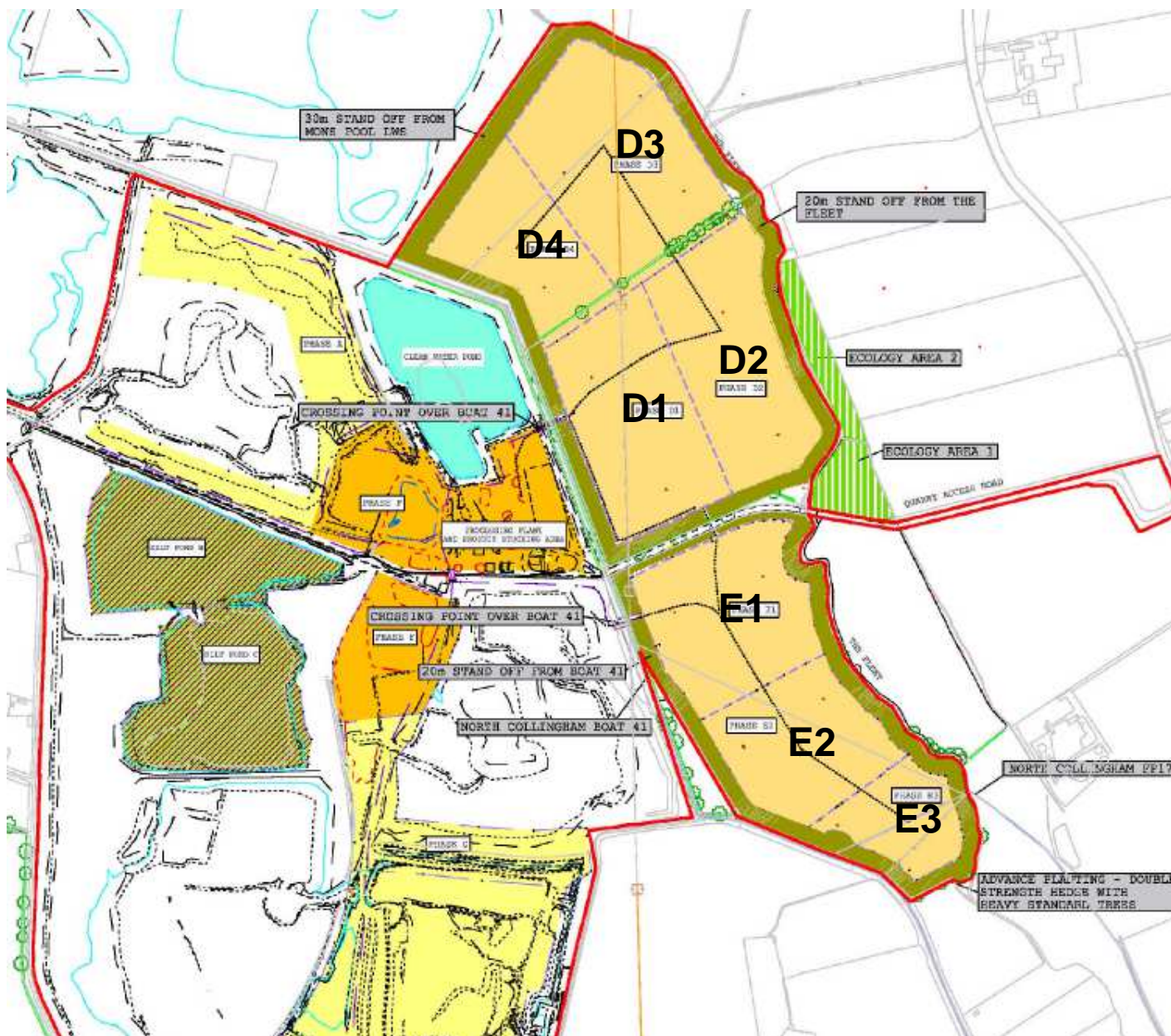
**Nottinghamshire
County Council**

Besthorpe Quarry



**Nottinghamshire
County Council**

Besthorpe Quarry



**Nottinghamshire
County Council**

Besthorpe Quarry



**Nottinghamshire
County Council**

Besthorpe Quarry

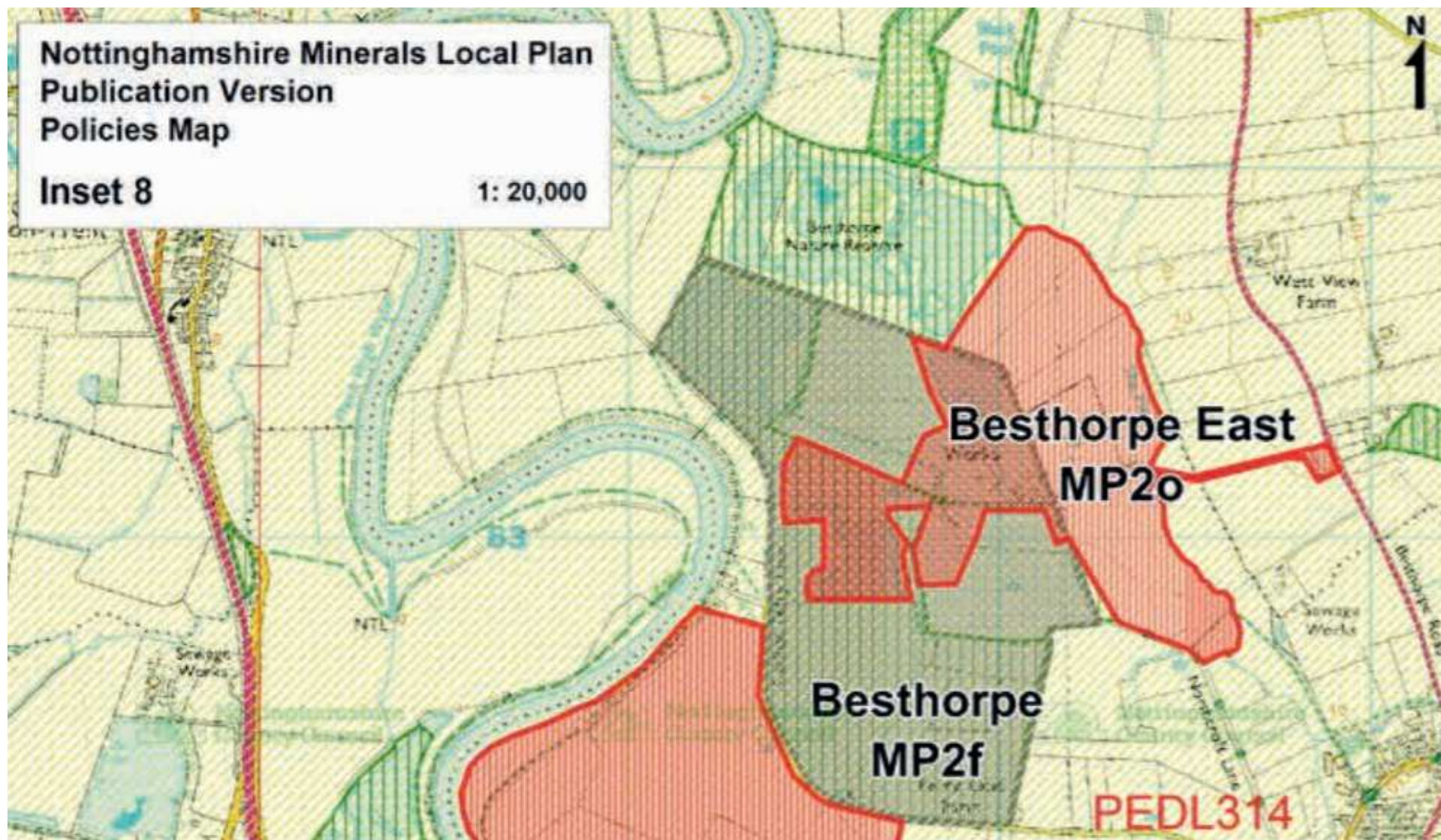


**Nottinghamshire
County Council**

Besthorpe Quarry

Policy MP1: Aggregate Provision

1. To meet identified levels of demand for aggregate mineral over the plan period (2018-2036) the following provision will be made:
 - 32.30 million tonnes of Sand and Gravel
 - 7.03 million tonnes of Sherwood Sandstone
 - 0.09 million tonnes of crushed rock
2. The County Council will make provision for the maintenance of landbanks of at least 7 years for sand and gravel, 7 years for Sherwood Sandstone and 10 years for crushed rock, whilst maintaining a steady and adequate supply over the plan period.
3. Proposals for aggregate extraction outside those areas identified in policies MP2, MP3 and MP4 will be supported where a need can be demonstrated.



Nottinghamshire
County Council

Besthorpe Quarry



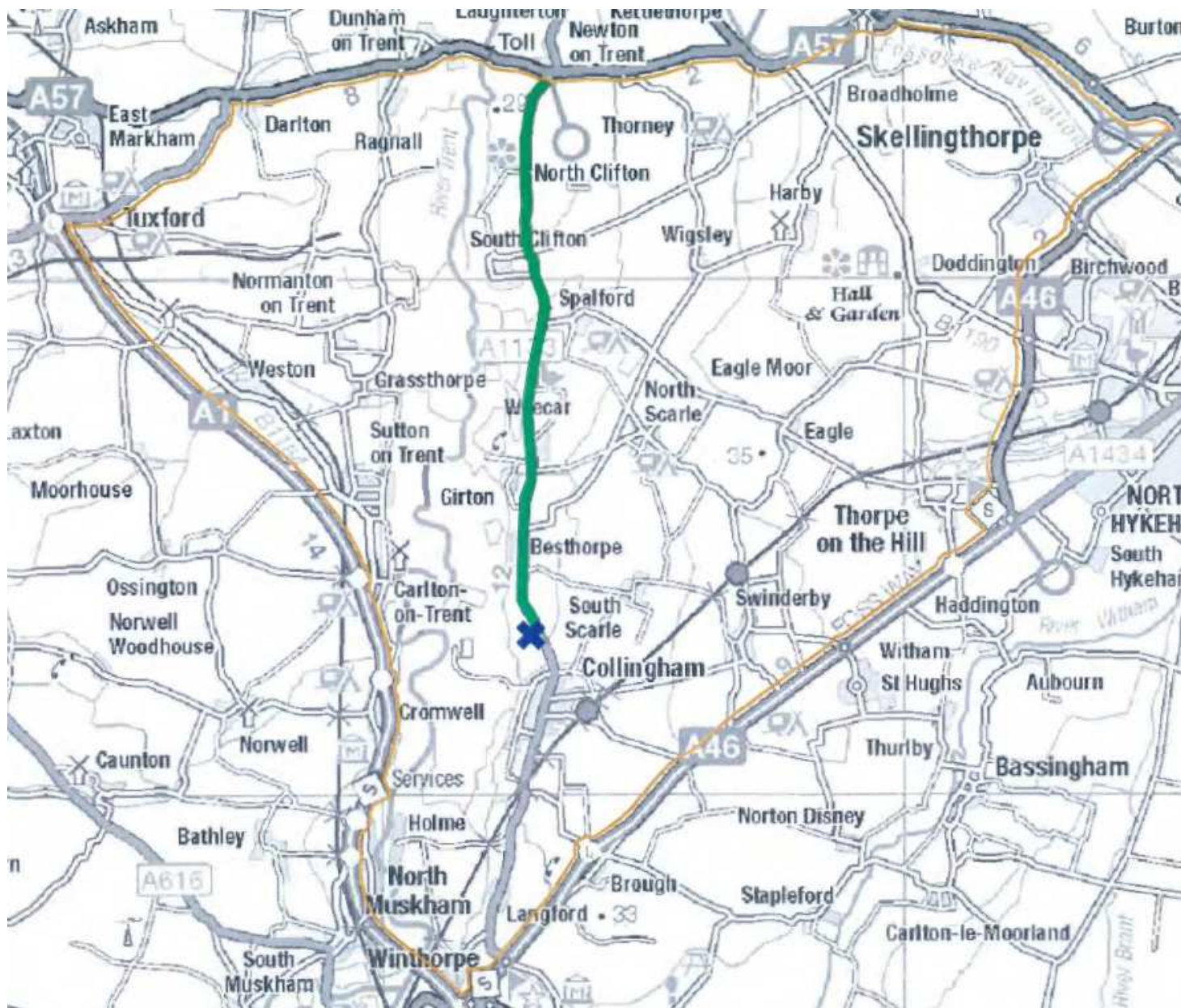
**Nottinghamshire
County Council**

Besthorpe Quarry



**Nottinghamshire
County Council**

Besthorpe Quarry



**Nottinghamshire
County Council**

Besthorpe Quarry

It is RECOMMENDED that Planning Permission be granted for planning application 3/19/01929/CMM, subject to:

- The applicant entering into a legal agreement under section 106 of the Town and County Planning Act 1990 to regulate lorry routeing and to implement a scheme for monitoring/mitigation for changes to water levels in the Collingham drainage ditch**
- The imposition of the planning conditions set out in Appendix 1.**