

South Yorkshire and Bassetlaw

Sustainability and Transformation Plan (STP)

Lisa Bromley

Executive Lead, Service Development

Bassetlaw CCG

SYB STP Progress From April – June

- 2 ‘Guiding Coalition Workshops’ held in April and June to guide, inform and shape the STP
 - Over 100 system-wide delegates attended each event
- Draft STP plan and finance submitted 30th June – checkpoint 1
- Nationally, deadline extended to autumn for all 44 STPs (October)

(Bassetlaw CCG is also active associate of the Notts STP)

SYB STP partners and system context



£3.9 billion total health and social care budget



1.5 million registered population



72,000 staff across health and social care



37,000 non-medical sta



3,200 medical staff



835 GPs / 208 practices



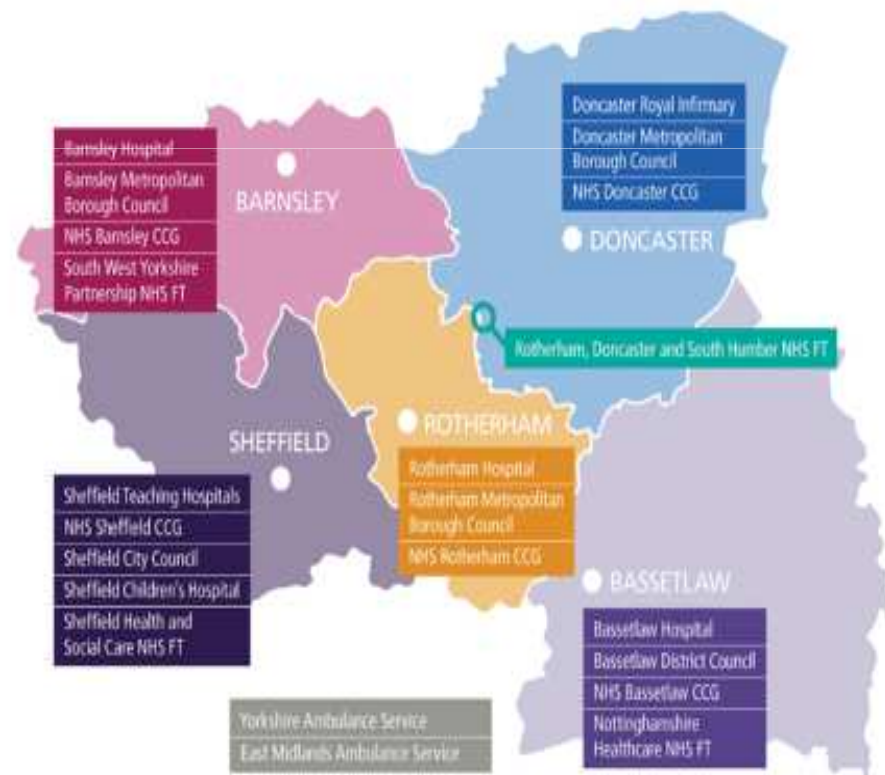
5 foundation trusts (7)



5 local authorities (7)



4 mental health trusts



STP Partners of the Guiding Coalition

Organisations:

NHS Barnsley Clinical Commissioning Group
Barnsley Hospital NHS Foundation Trust
Barnsley Metropolitan Borough Council
NHS Bassetlaw Clinical Commissioning Group
Bassetlaw District Council (and Nottinghamshire County Council)
NHS Doncaster Clinical Commissioning Group
Doncaster and Bassetlaw Hospitals NHS Foundation Trust
Doncaster Children's Trust
Doncaster Metropolitan Borough Council
East Midlands Ambulance Service NHS Trust
Heath Education England
Local Voluntary Action
Local Healthwatch organisations
NHS England
Nottinghamshire Healthcare NHS Foundation Trust
Public Health England
NHS Rotherham Clinical Commissioning Group
The Rotherham NHS Foundation Trust
Rotherham, Doncaster and South Humber NHS Foundation Trust
Rotherham Metropolitan Borough Council
NHS Sheffield Clinical Commissioning Group
Sheffield City Council
Sheffield Children's NHS Foundation Trust

Sheffield Teaching Hospitals NHS Foundation Trust
Sheffield Health and Social Care NHS Foundation Trust
Sheffield Hallam University
South West Yorkshire Partnership NHS Foundation Trust
Strategic Clinical Network
The University of Sheffield
Yorkshire Ambulance Service NHS Trust
Yorkshire and Humber Academic Health Science Network

Associates to the STP

Chesterfield Royal Hospital NHS Foundation Trust
NHS Hardwick Clinical Commissioning Group
Mid Yorkshire Hospitals NHS Trust
NHS North Derbyshire Clinical Commissioning Group
NHS Wakefield Clinical Commissioning Group

Associate STPs:

Derbyshire
Humber Coast and Vale
Nottinghamshire (where Bassetlaw is an associate)
West Yorkshire

Key contributors to SYB STP triple aim gaps



1. Care and quality

SYB STP performance is **below average** in:

Meeting the 4-hour A&E target

Our Length of Stay for fractured neck of femur

Meeting the 62 day GP referral target for cancer



2. Health and wellbeing

The SYB STP footprint is **above average** in:

Dementia prevalence is within the highest 20% of all CCGs

Rates of cancer mortality for under 75s



3. Finance and sustainability

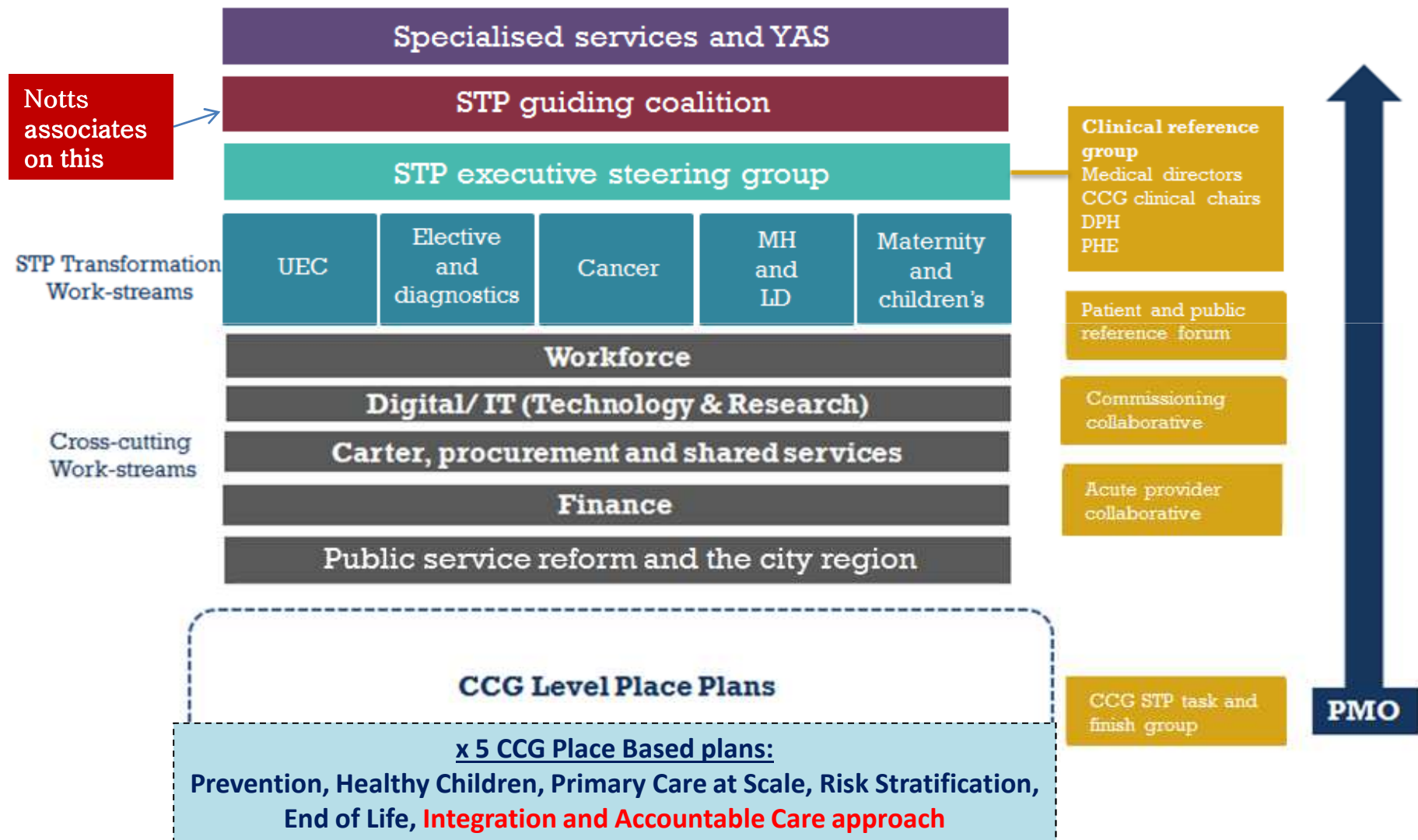
The SYB STP faces **significant financial challenges**:

£418m Health 'gap' across SYB

£181m Care 'gap'

£83m in-year provider deficit

SYB STP top 5 priorities and STP plan governance



5 STP Transformational Priorities

Urgent and Emergency Care

- § Reorganise, integrate and improve urgent care in the community
- § Designation of Emergency Departments (national reqt)
- § Seamless care using digital technology and better workforce/ skills model
- § Enhance self care to encourage and support citizens to better use services

Elective care and Diagnostics

- § Care closer to home, shift care out of hospital into community
- § Explore feasibility of hot/ cold sites for elective high volume activity

Children's and Maternity

- § SYB single children's and maternity service with more care in the community and better pathways links between acute and community

Cancer

- § Standardised diagnosis and treatment based on optimum pathways
- § Cancer survivorship. Supporting more people living with and beyond cancer

5 STP Transformational Priorities (cont)

Mental Health and Learning Disability

- § Create a provider alliance across the 4 MH Trusts in SYB (NHTFT included)
- § Improve 24 /7 crisis care
- § Deliver national requirements of Transforming Care (LD)

And,

Accountable care and Integrated working

- All 5 SYB CCGs are considering integrated care and accountable care approaches in their place based plans
- Including Bassetlaw with the Accountable Care Partnership
- The STP links to our Bassetlaw place plan

Our Vision

To Create a Community of Care and Support

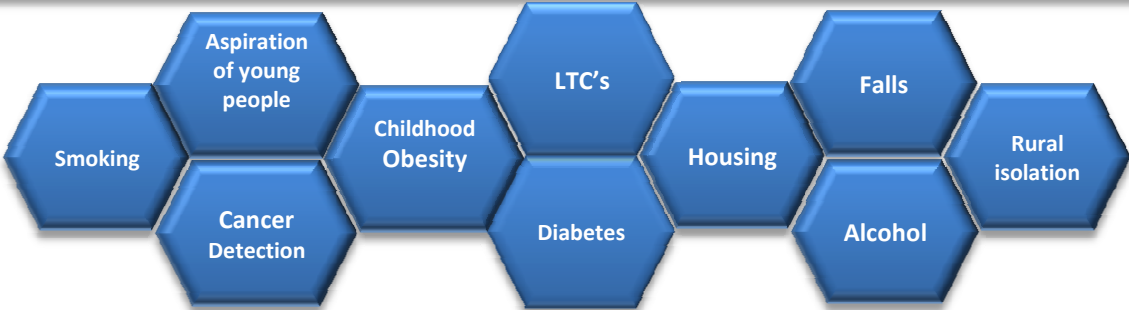
Goals

- Better care for the frail and elderly guided by the principles of the Commission for Older People.
- A high quality 7 day Hospital campus.
- Same day integrated primary care community services co-ordinated with General Practice.
- Our most vulnerable patients receiving more individual and integrated care.
- More active support for patients from families, carers and third sector.
- Care Homes acting as an integrated part of our community.
- Common health record across health and social care

Our Population Health priorities

Reducing Prevalence of long term conditions, falls and improving the quality of life for the frail elderly

Our Priorities for prevention



Our Place Plan (STP) Themes

- | <u>STP Themes</u> | <u>Local Themes</u> |
|---|---|
| <ul style="list-style-type: none"> • System wide Urgent/emergency Care • Acute Planned care • Cancer • Mental health and LD • Maternity and Children's | <ul style="list-style-type: none"> • Care of frail and Elderly • Integration in General practice • Long term condition management • End of life care • Intermediate care |

Enabled by



Our Commitment to Accountable Care

- Oversee the development and delivery of the Bassetlaw place plan.
- Develop, support and evaluate
 - provider innovation and new models of care
 - outcome led commissioning and provision
 - integration of care and support that brings together professionals to work across traditional boundaries
- Position the Bassetlaw health system to maintain sustainable services and anticipate and respond to national changes in policy

Bassetlaw Place plan

Bassetlaw Place Priorities

Local Themes

- Care of frail and Elderly
- Integration in General practice
- Long term condition management
- End of life care
- Intermediate care

STP Themes

- System wide Urgent/emergency Care
- Acute Planned care
- Cancer
- Mental health and LD
- Maternity and Children's

Prevention – not just about health...

Health

- Smoking
- Cancer
- Childhood Obesity
- Diabetes /LTCs
- Falls
- Alcohol

Social Communities

- Self Care
- Rural Isolation
- Housing
- Aspirations of young people
- Public Sector Reform

Wider Determinants Health

- Education
- Employment
- Social Communities

Next Steps:

Bassetlaw Place Plan: (Draft early September)

- Bassetlaw Integrated Care Board - 19 July
 - Discuss place priorities with system- wide partners
 - Align provider strategies into plan
 - Prevention and Wider Determinants of Health and empowering social communities

SYB STP:

- STP Review 13th July with Simon Stevens and Jim Mackay
- Feedback expected early August
- Next iteration due September

SYB STP timeline

