

Elective Home Education Dashboard 13 February 2022

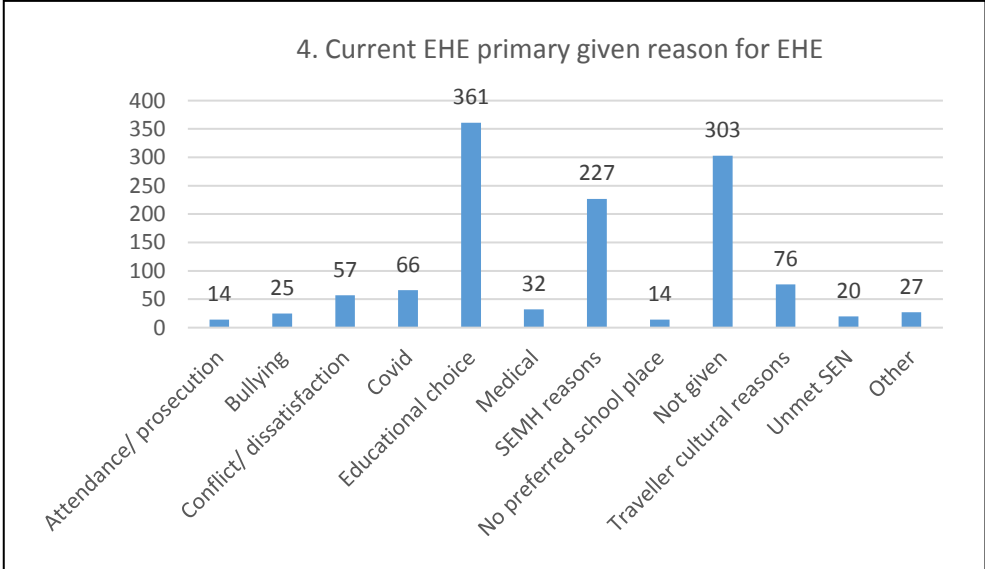
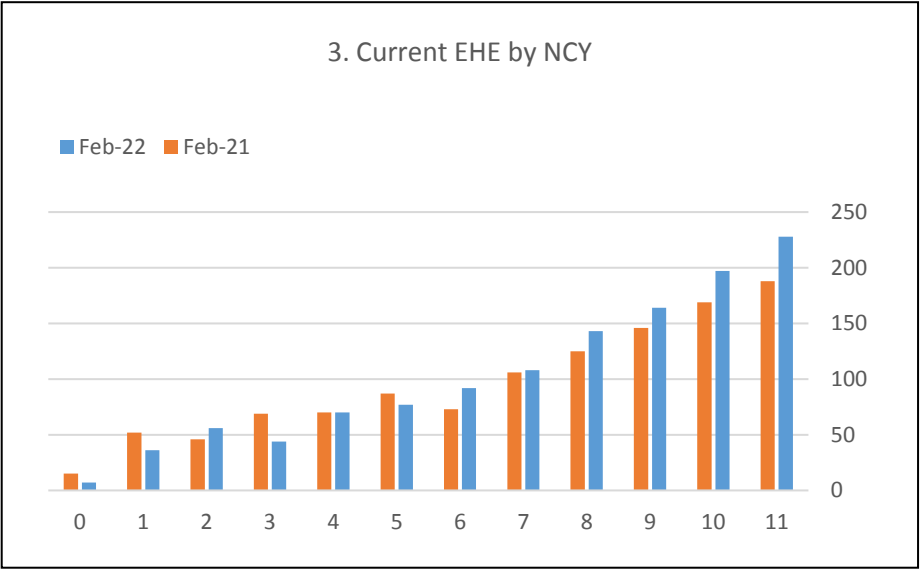
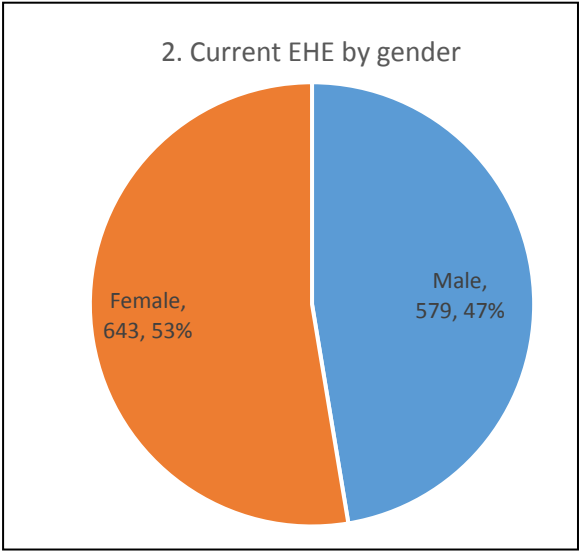
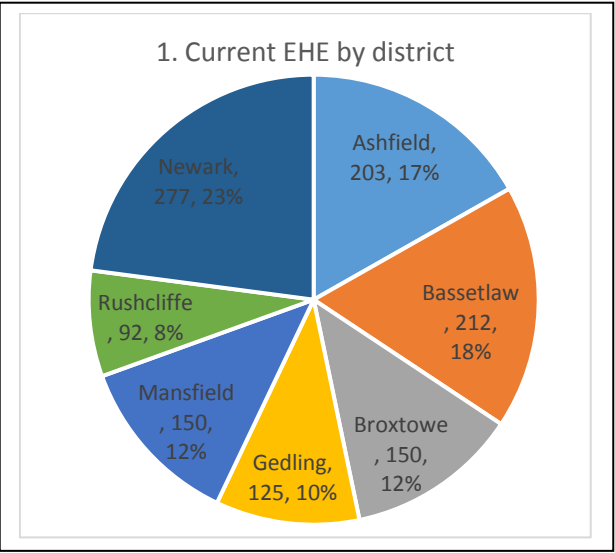
No of known EHE children: 1222

No of EHE children who have an EHCP: 24

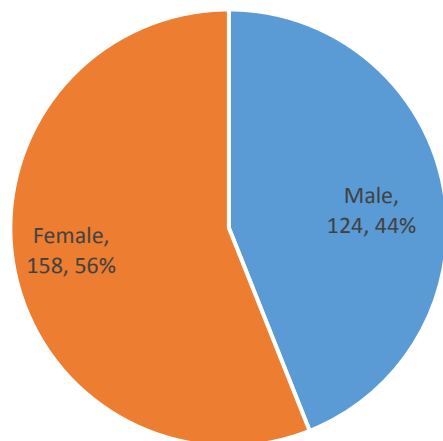
No of EHE children who are CIN: 9

No of children where there is active involvement from the EHE Service: 857

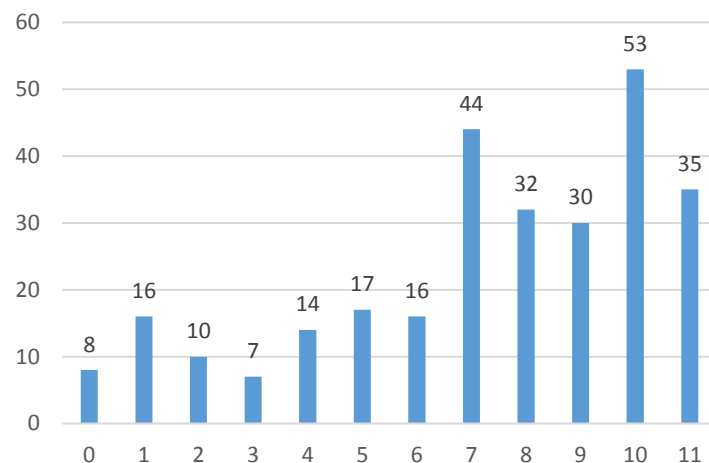
No of children where parents have declined this: 365



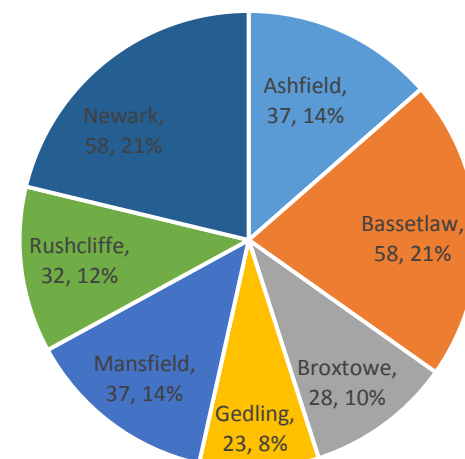
5. New EHE this academic year by gender



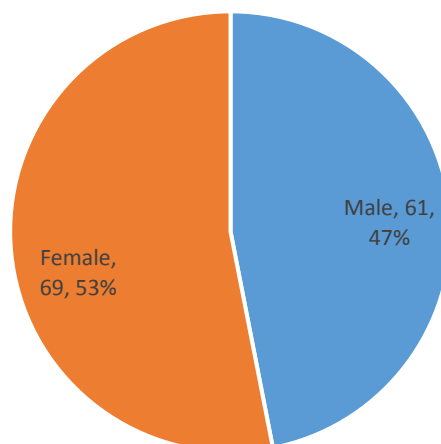
6. New EHE this academic year by NCY



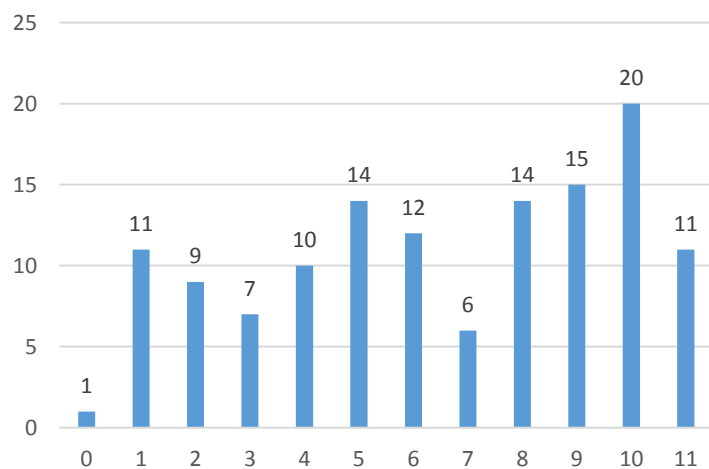
7. New EHE this academic year by district



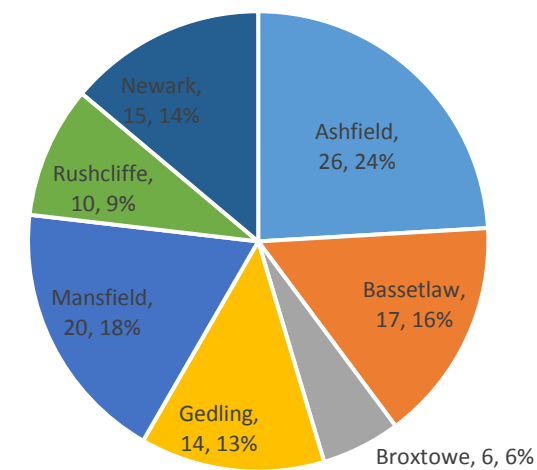
8. EHE ended this academic year by gender

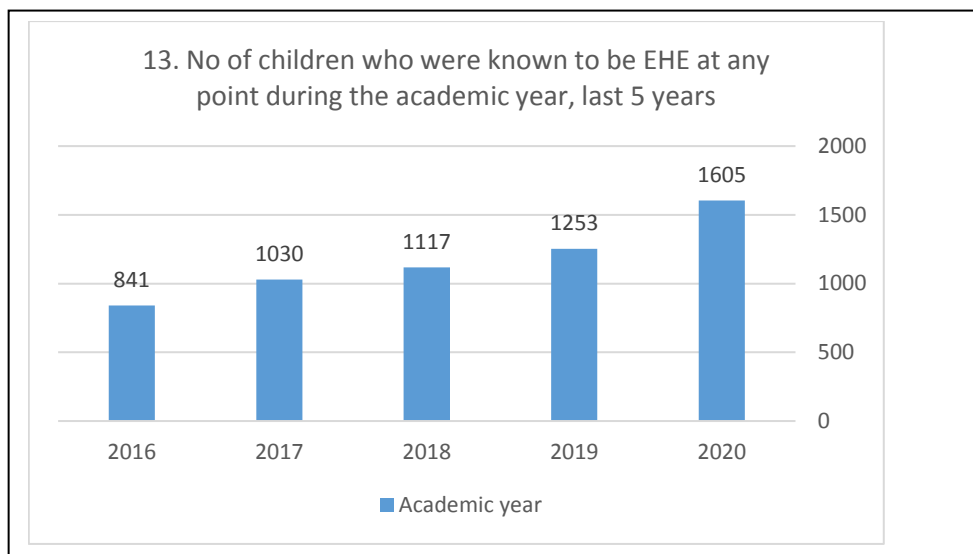
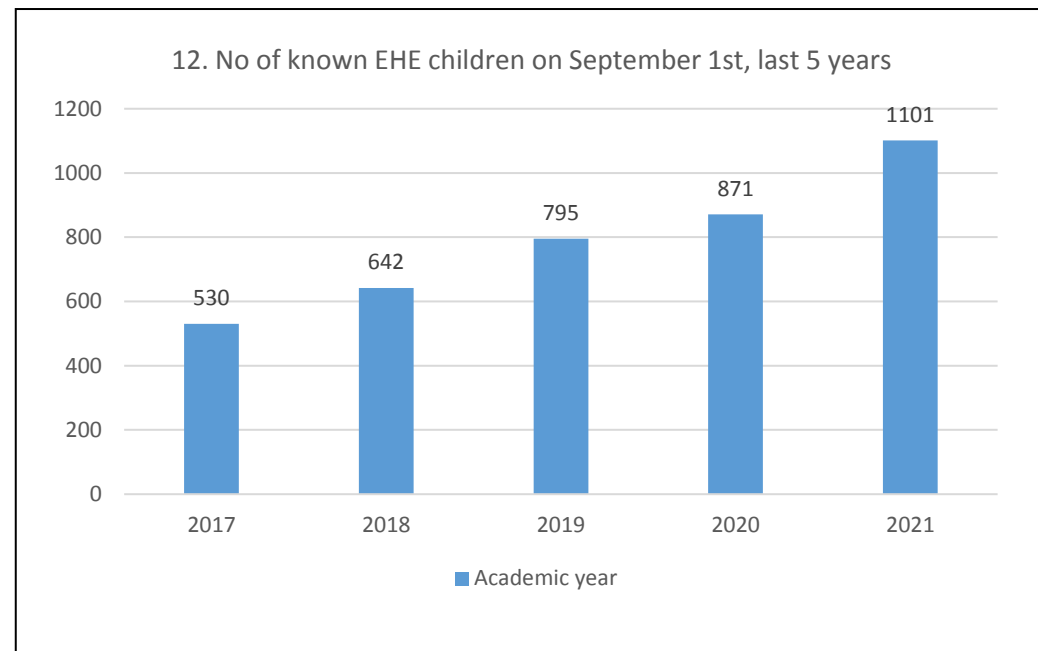
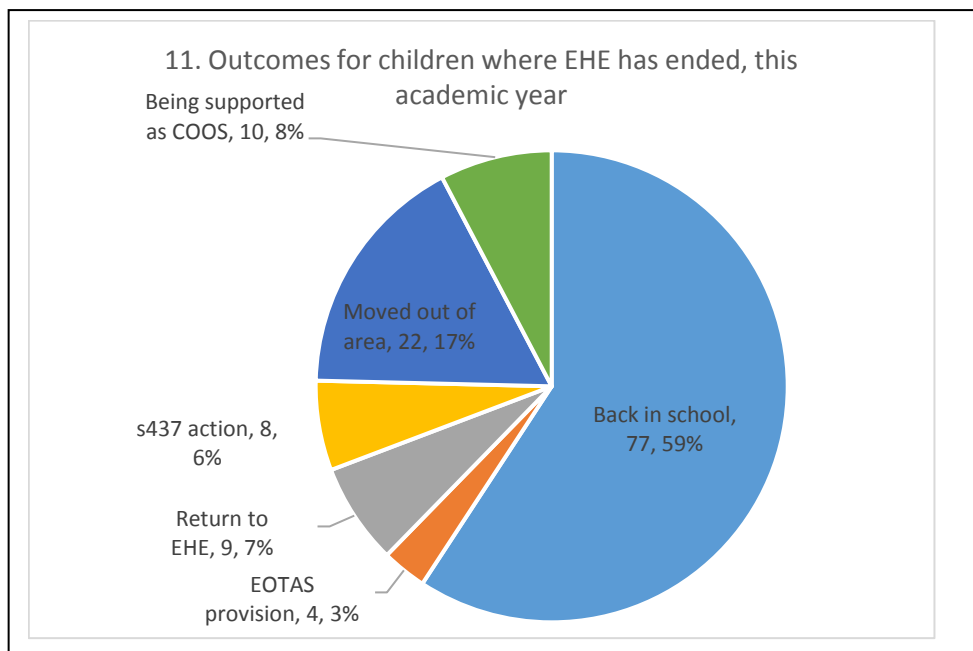


9. EHE ended this academic year by NCY



10. EHE ended this academic year by district





	Number of known EHE children on 1 September	Percentage increase on previous year	Number of known EHE children at any point during the academic year	Percentage increase on previous year
2021	1101	26.4%		
2020	871	9.6%	1605	28.1%
2019	795	23.8%	1253	12.2%
2018	642	21.1%	1117	8.4%
2017	530		1030	22.5%