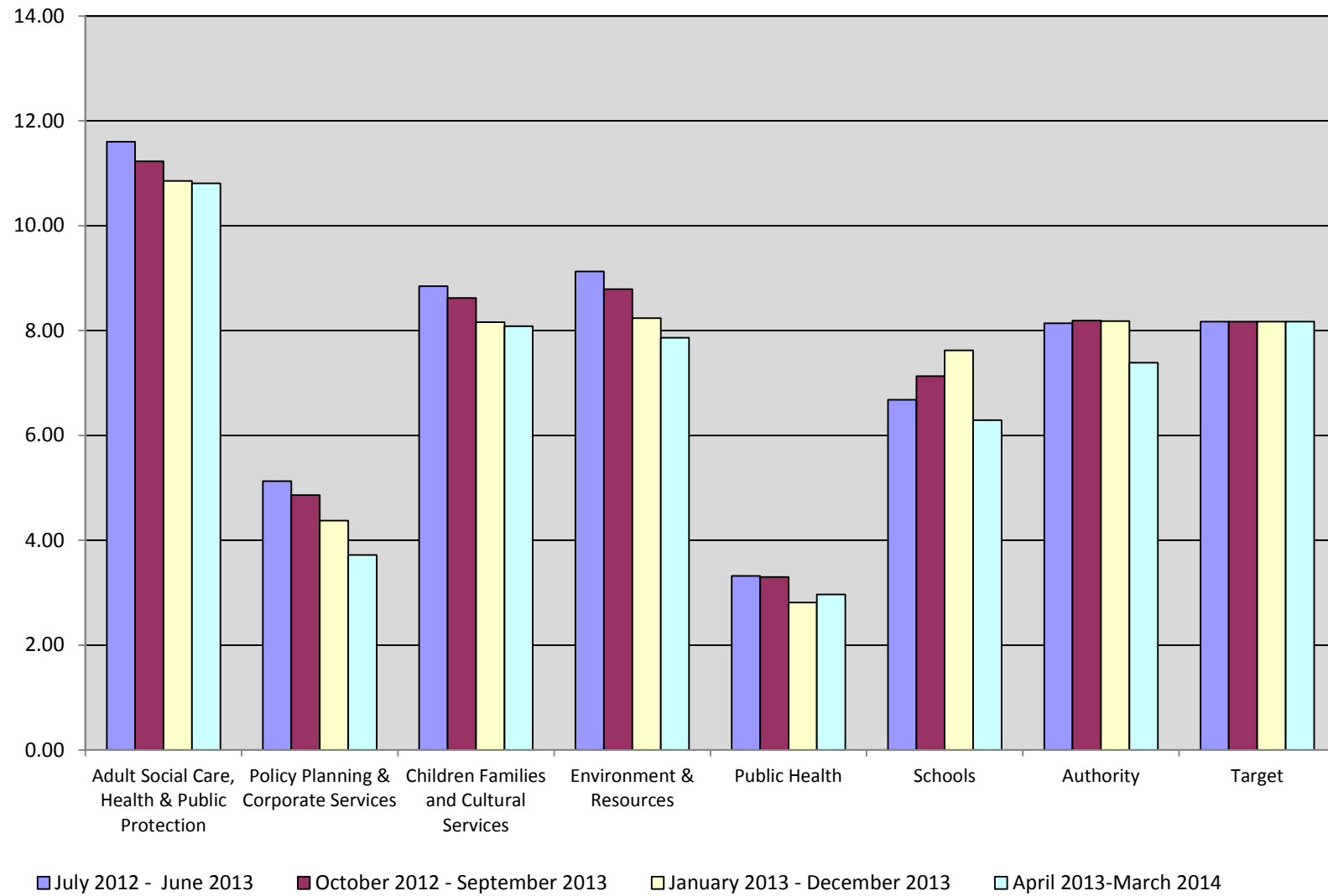


Appendix A: Overall Performance (rolling 12 month period) inc NCC schools:

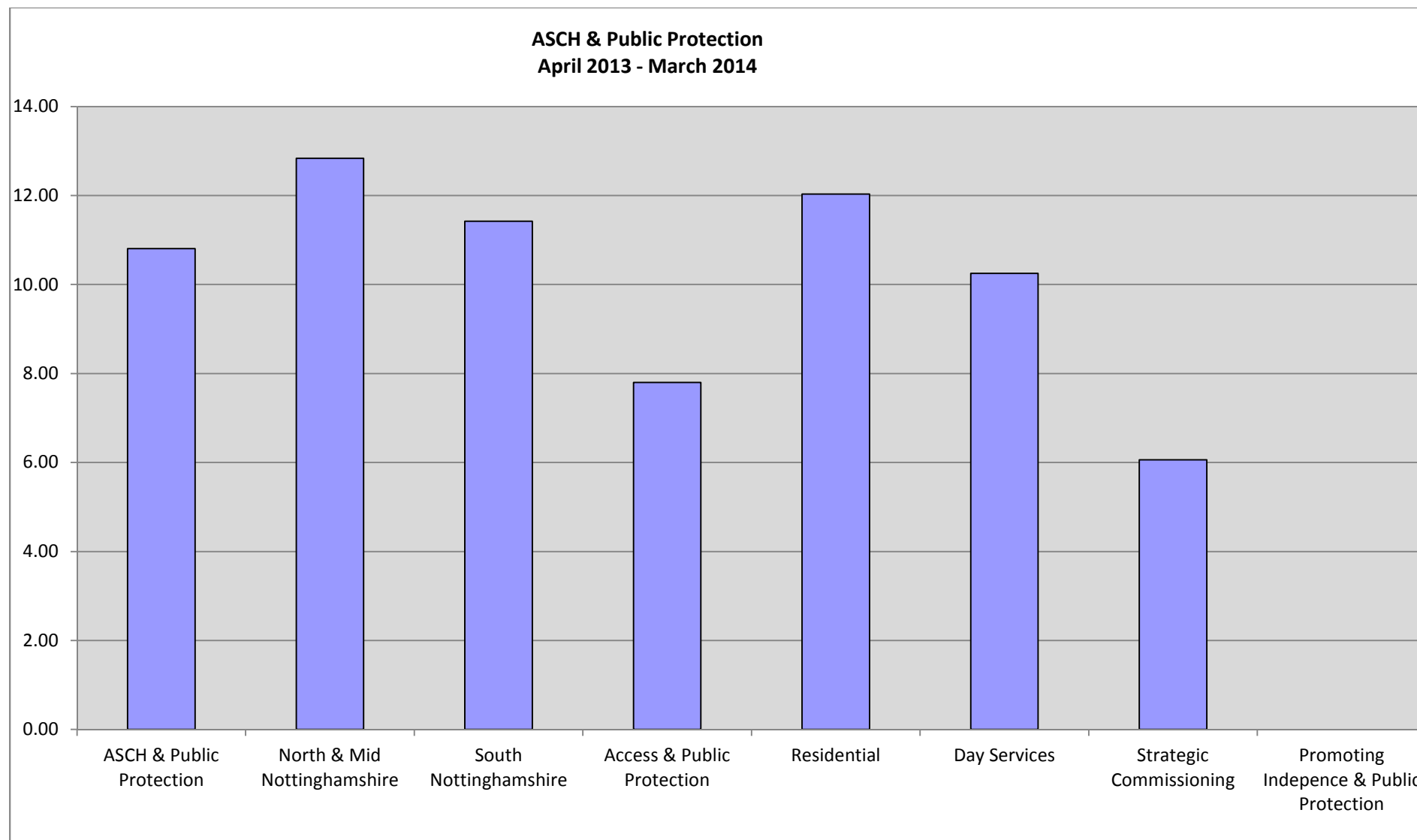
	July 2012 - June 2013	October 2012 - September 2013	January 2013 - December 2013	April 2013- March 2014
Adult Social Care, Health & Public Protection	11.60	11.23	10.85	10.81
Policy Planning & Corporate Services	5.13	4.86	4.37	3.72
Children Families and Cultural Services	8.85	8.62	8.16	8.08
Environment & Resources	9.13	8.79	8.23	7.86
Public Health	3.32	3.30	2.81	2.96
NCC Schools	6.68	7.13	7.62	6.29
Authority	8.14	8.19	8.18	7.39
Target	8.17	8.17	8.17	8.17

*Public Health joined Nottinghamshire County Council on 1st April 2013. The number of days lost due to sickness has calculated accordingly on a pro-rata basis and now reflects a full rolling 12 months period of reported data.

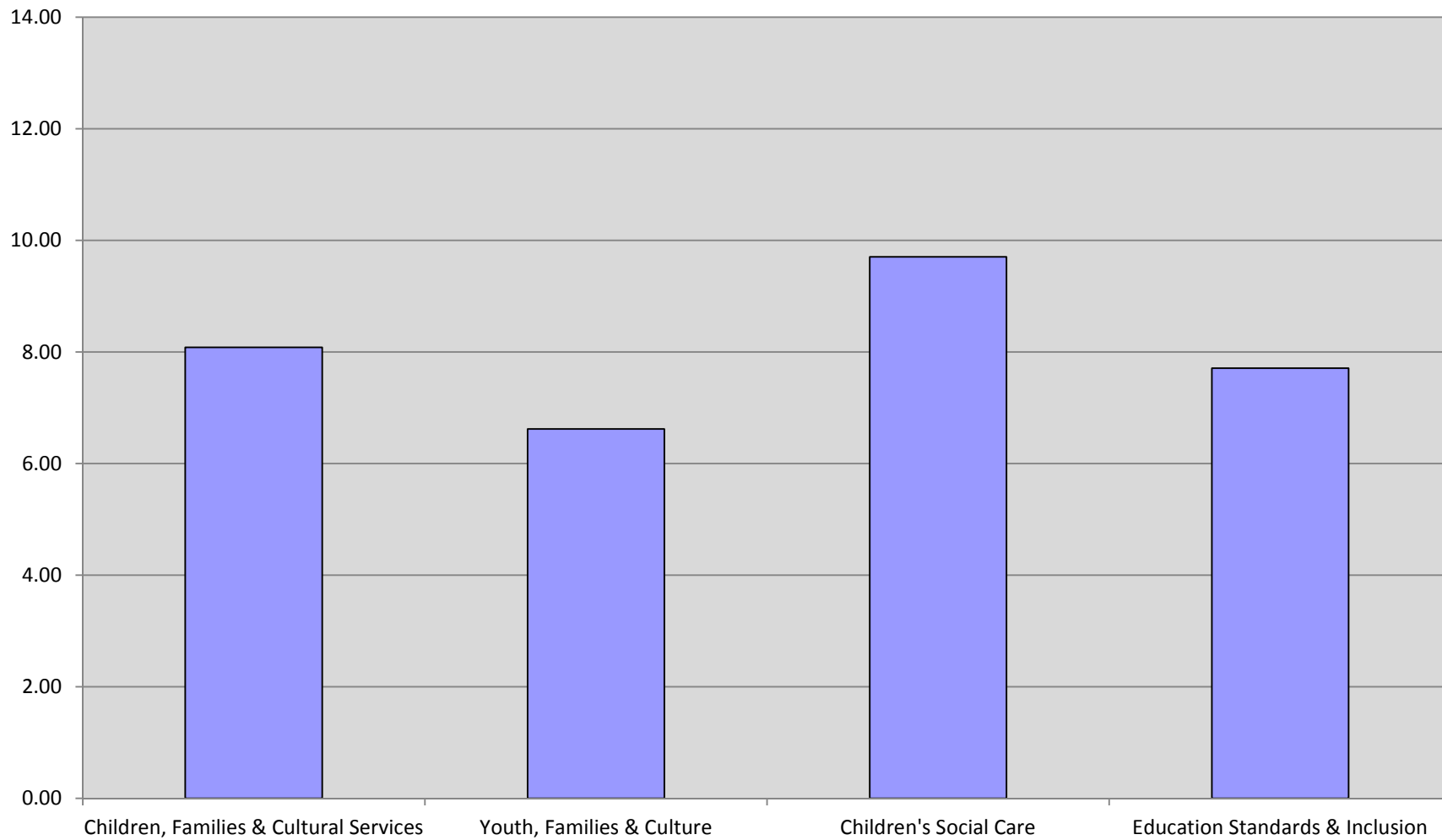
Average number of days sick per employee for the authority by department



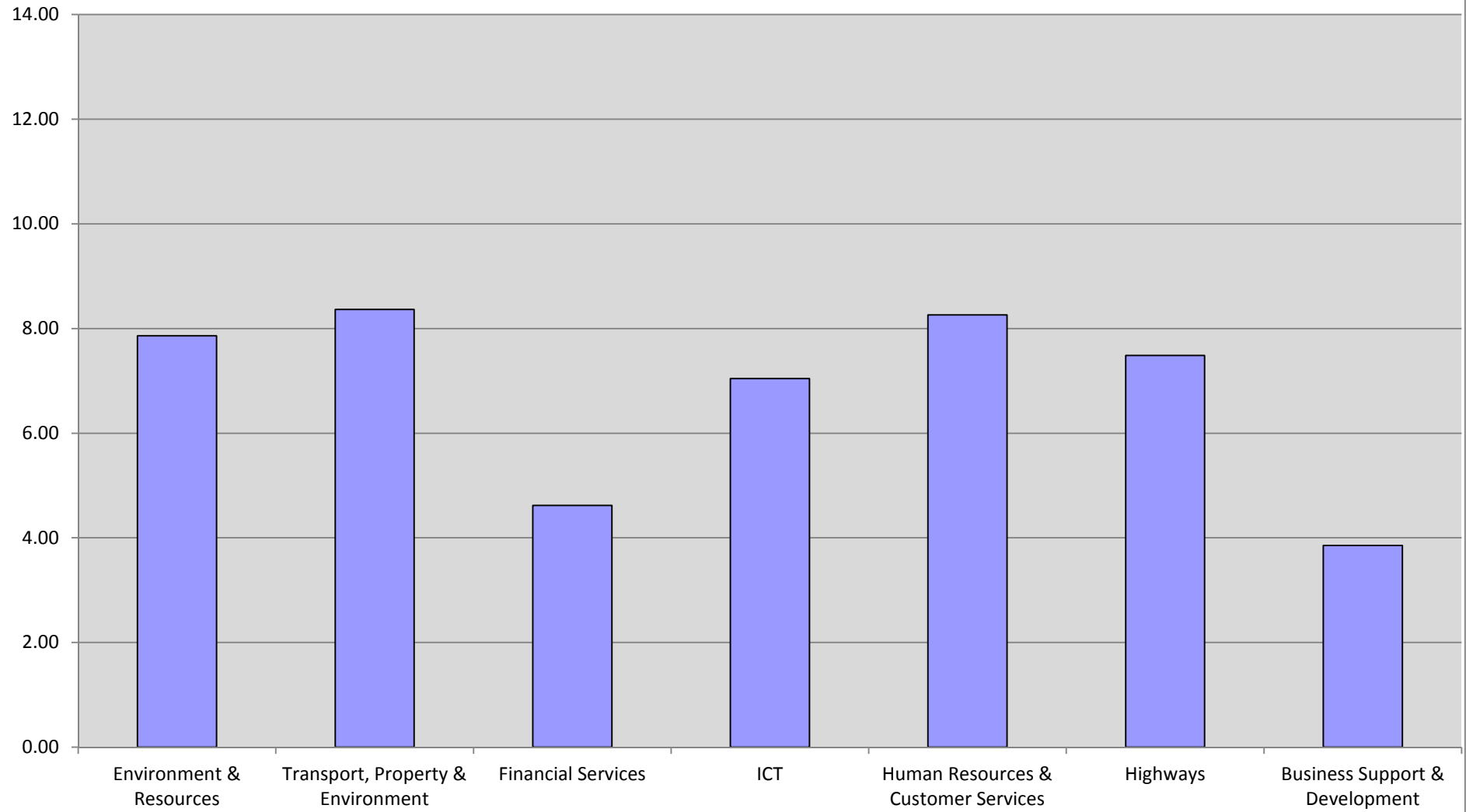
By Department:



**Children, Families & Cultural Services
April 2013 - March 2014**



Environment & Resources
April 2013 - March 2014



Policy, Planning & Corporate Services
April 2013 - March 2014

