

Joint Committee on Strategic Planning and Transport

JPAB GROWTH WORKSHOP FEEDBACK

6 September 2019



Background and Context

- NPPF – development plan must include strategic policies
- NPPF - spatial development strategies should be reviewed to assess whether they need updating at least once every five years
- JPAB decision to review strategic planning policies (the Aligned Core Strategies)
- ‘Growth Workshop’ held on 26 March



Purpose of Workshop

- Inform JPAB of current and evolving Government approach
- Explore key issues affecting growth scale and location
- Think about what “good growth” looks like



Current Approaches to Strategic Planning

- Government seeking more effective strategic plans.
- Better integration of spatial, infrastructure and economic priorities.
- More joint planning arrangements, often driven by 'deals'.
- Models include voluntary and formal joint arrangements.
- Our approach was innovative at the time, and remains appropriate for our area.



Workshop Discussion

- 1. Key strategic planning influences
- 2. Strategic Planning interventions needed to achieve “good growth”



Points from discussions

- Importance of developing a shared ‘narrative’ about our collective ambitions for the area.
- Understand and articulate better the impact and benefits of HS2.
- Define what our ‘USP’ is:-
 - Good quality of life.
 - Enhance the liveability of GN as a place.
 - Potential of corridors and nodes
 - Importance of Green Infrastructure



Green Infrastructure

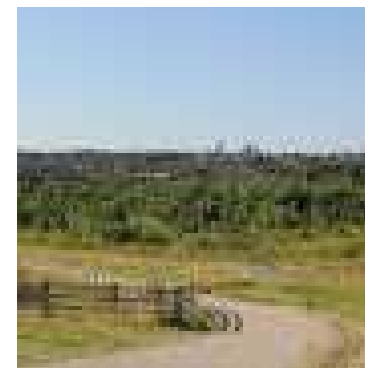
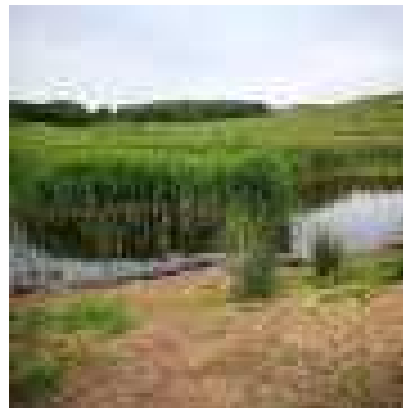
- Mentioned throughout
- Excellent existing network
- Excellent track record (Wetlands for All etc)
- Feeds into:-
 - Health and wellbeing
 - Liveability
 - Quality of life
 - Sustainable economic structure
 - Resilience (eg flooding and climate change)
 - Making growth acceptable ('good growth')



Towards a growth strategy

- Green Infrastructure and growth planned and implemented together – integrated strategy
- NOT an after thought/add on
- Building on existing strengths
- Green Infrastructure at the heart of our growth strategy will help delivery of other priorities eg HS2







Questions and comments?

