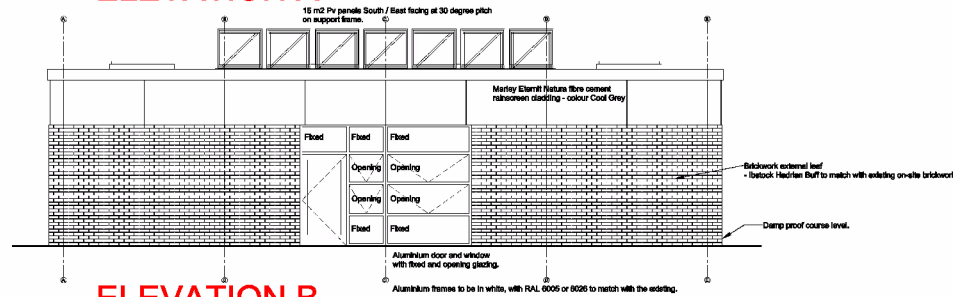
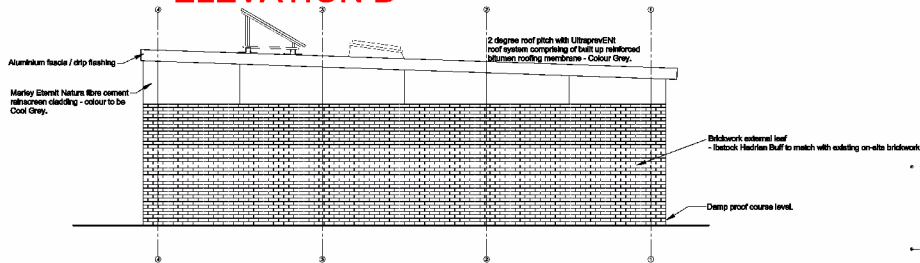


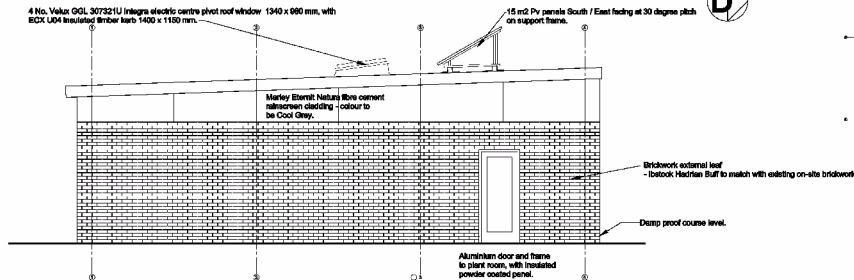
ELEVATION A



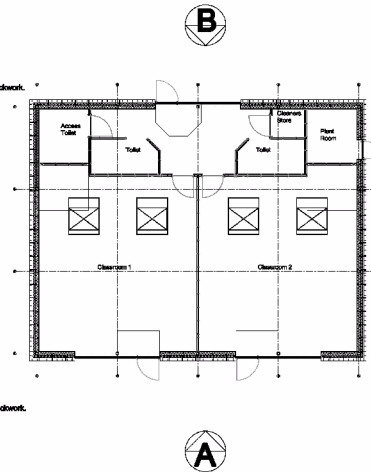
ELEVATION B



ELEVATION D



ELEVATION C



C

B

A



Derbyshire County Council
Corporate Resources Department
Corporate Property
Chadwell Hall
Chatterfield Road
Maidon
Derbyshire DE4 3FW
Tel: 01629 560000
Fax: 01629 536266
e-mail: contact centre@derbyshire.gov.uk
www.derbyshire.gov.uk



| No. | Description | Date |
|-----|-------------|------|
| | | |
| | | |
| | | |
| | | |
| | | |
| | | |
| | | |
| | | |
| | | |
| | | |
| | | |
| | | |
| | | |
| | | |
| | | |

**Carnarvon Primary School, Bingham, Notts.
2 Classroom CONNECT
Block KS2
56 m²**
**Architectural Elevations
Brickwork**

| | |
|----------------|------------------|
| Project number | 1201402 |
| Date | December 2012 |
| Drawn by | A. Elliott |
| Checked by | ** |
| F01 | |
| Scale | 1:50 @ A1 |

Connect Drawing Sheet



Trent Bridge House, Fox Road
Nottinghamshire West Bridgford, Nottingham, NG2 6BJ
County Council Tel: 0115 982 3823

Proposed erection of a two classroom stand alone building and the retention of the adjacent fenced ball court hard play area.
Carnarvon Primary School, Nursery Road, Bingham, Notts.
Planning Application No. 8/13/00337/CTY

This map is reproduced from Ordnance Survey material with the permission of Ordnance Survey on behalf of the Controller of Her Majesty's Stationery Office © Crown copyright.
Unauthorised reproduction infringes Crown copyright and may lead to prosecution or civil proceedings. (1000019713) (2013)



Not to Scale
Produced by: JH
Date: APRIL 2013

PLAN 4