



meeting	JOINT HEALTH SCRUTINY COMMITTEE	
date	11 March 2008	agenda item number

Report of the Vice Chair of the Joint Health Scrutiny Committee

Specialised Service Commissioners

East Midlands Specialised Service Commissioning Team

Purpose of the report

1. To introduce the Joint Health Scrutiny Committee to Specialised Health Services and provide Members with the opportunity to consider current issues in relation to the commissioning of those services.

Background

2. Specialised Services are those provided in a small number of specialist centres and are usually commissioned across the whole of the East Midlands. A list of 35 services nationally recognised as being specialised is attached as an appendix to this report.
3. The commissioning and provision of specialised services can be scrutinised by local authorities and any proposals for substantial variations/developments in relation to specialised services must be consulted upon.
4. On 8 January 2008 Local Government East Midlands (LG-EM) hosted a regional health scrutiny network meeting. The East Midlands Specialised Services Commissioning Team was invited to attend and consideration was given to how regionally delivered health services should be scrutinised and particularly how consultations on substantial variations and developments to those services should be responded to. Further work is being undertaken by officers and Chairs of Scrutiny to explore these issues.

Issues

5. The Director of the East Midlands Specialised Services Commissioning Team, Kate Caston will be attending the meeting to provide a presentation to introduce Members to
 - the role of Specialised Services Commissioning and
 - the proposed areas of work for the Specialised Services Commissioning Team.

A copy of the presentation is attached as an appendix to this report.

Recommendations

6. It is recommended that

The Joint Health Scrutiny Committee consider the information provided and identifies areas for further information or review.

Councillor Chris Winterton
Vice Chair

Background papers:

Consultations by specialised services commissioners - CfPS

list of specialised services

Thirty five specialised services are identified by the Specialised Services National Definitions Set. A second edition was produced in 2002. The definitions were developed through national working groups (one for each service). Many clinicians, hospital managers, finance and information staff, commissioners and patients' representatives were directly involved in working group meetings and many more provided comments during the consultation stages. Some of the definitions have been endorsed by the relevant national organisations. A third edition of the National Definitions Set is currently underway.

The definitions identify the activity that should be regarded as specialised and therefore subject to collaborative commissioning arrangements. They enable commissioners to establish a broad base-line position on activity and costs and make comparisons year on year and across different providers.

- specialised cancer services (adults)
- specialised services for blood and marrow transplantation (all ages)
- specialised services for haemophilia and other related bleeding disorders (all ages)
- specialised services for women's health
- assessment and provision of equipment for people with complex disabilities (all ages)
- specialised spinal services (all ages)
- complex specialised rehabilitation services for brain injury and complex disability (adult)
- specialised neurosciences services (adult)
- specialised burn care services (all ages)
- cystic fibrosis services (all ages)
- specialised renal services (adult)
- home parental nutrition services (adult)
- specialised cardiology and cardiac surgery (adult) including cardiothoracic transplantation (all ages)
- specialised services for HIV/AIDS treatment and care services (all ages)
- cleft lip and palate services (all ages)
- specialised clinical immunology services (all ages)

Appendix 1

Extract from Consultations by specialised
services commissioners - CfPS

- specialised services for allergy (all ages)
- specialised services for infectious diseases (adult)
- specialised services for hepatology
- medical genetic services (all ages)
- specialised learning disability services
- specialised mental health services (adult)
- specialised services for children
- specialised dermatology services (adult)
- specialised pathology services (all ages)
- specialised rheumatology services (adult)
- specialised endocrinology services (adult)
- hyperbaric treatment services (adult)
- specialised respiratory services (adult)
- specialised vascular services (adult)
- specialised pain management services (adult)
- specialised ear surgery (all ages)
- specialised colorectal services (adult)
- specialised orthopaedic services (adult)
- specialised morbid obesity services (all ages)

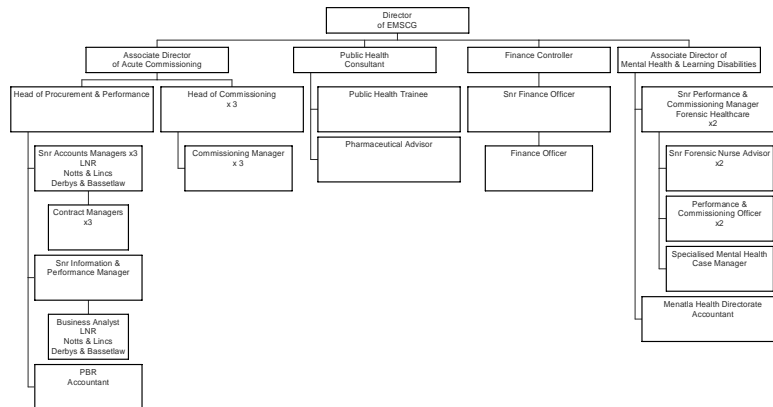
[East Midlands Specialised Service Commissioning Team]

Kate Caston
Director East Midlands SCT

[What are specialised services?]

- They are not provided by every hospital
- Are challenging for individual PCTs to plan for and commission:
 - Rare conditions
 - Tend to be expensive and unpredictable
 - Patients often know their service very well and are very attached to their provider
 - There are currently 35 and they cost the NHS around £4billion – 10% of the NHS budget

Who are East Midlands SCT



East Midlands

Specialised Commissioning Group (SCG)

- 9 PCTs across the East Midlands
- Establishment agreement in place
- Sub-committee of each PCT Board
- Binding decisions making across the East Midlands
- Working on behalf of all PCTs

Specialised Commissioning Team (SCT)

- Compliant with national review – Carter Report
- Multi-professional team

Good Commissioning

- Vision, understanding and purpose
- Health needs & evidenced based approach
- Supports clinical and cost effective services
- Ensures resource demands do not consume disproportionate levels of resources at the expense of preventative strategies, which can have a greater potential for health gain
- Tackles inequity and differential access.
- Supports policy development where the evidence is unclear about how to proceed.

What we do

- Plan, procure and monitor specialised services
- Work with the 9 PCTs across the East Midlands to ensure that their populations receive equal and fair access to specialised services
- Establish risk sharing arrangements
- Establish fair eligibility criteria

[Current issues for East Midlands Specialised Services]

- Developing a model of care compliant with 'Improving Outcomes Guidance' for rare children's cancers.
- Developing a model for specialised children's services across the East Midlands.
- Implementing the outcomes of the National Burns Review

[What we need from you]

- Communication channel so we can raise issues that impact on local population
- Engagement on proposals for service change
- Clarity over how we effectively engage with you