

**Planning Applications  
3/19/02231/CMM & 3/19/02232/CMM  
Southern Extension to Quarry**

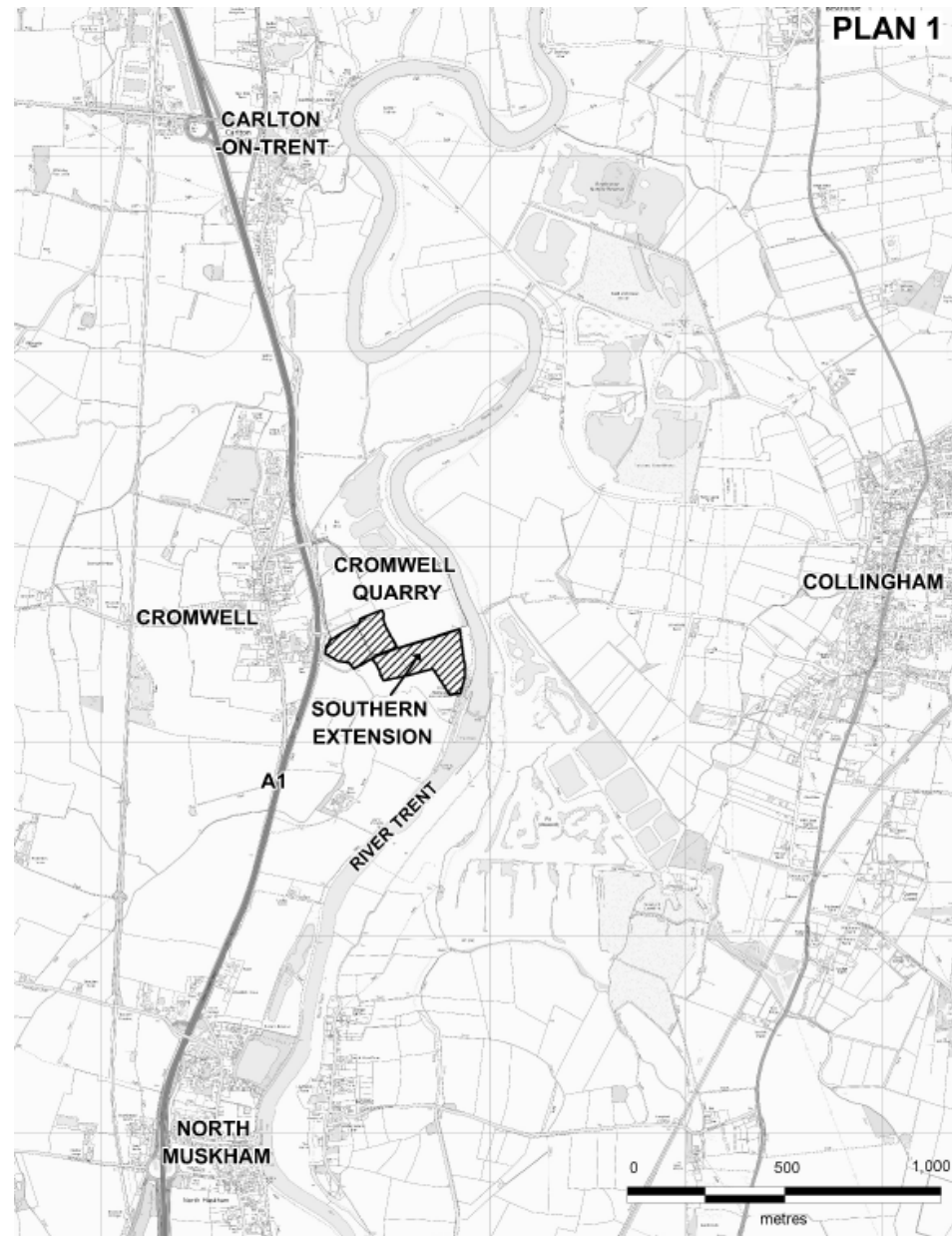
**Planning Application: 3/19/02233/CMM  
Vary planning conditions of  
3/18/01737/CMA to modify method of  
working and restoration scheme**

**Cromwell Quarry**



**Nottinghamshire  
County Council**

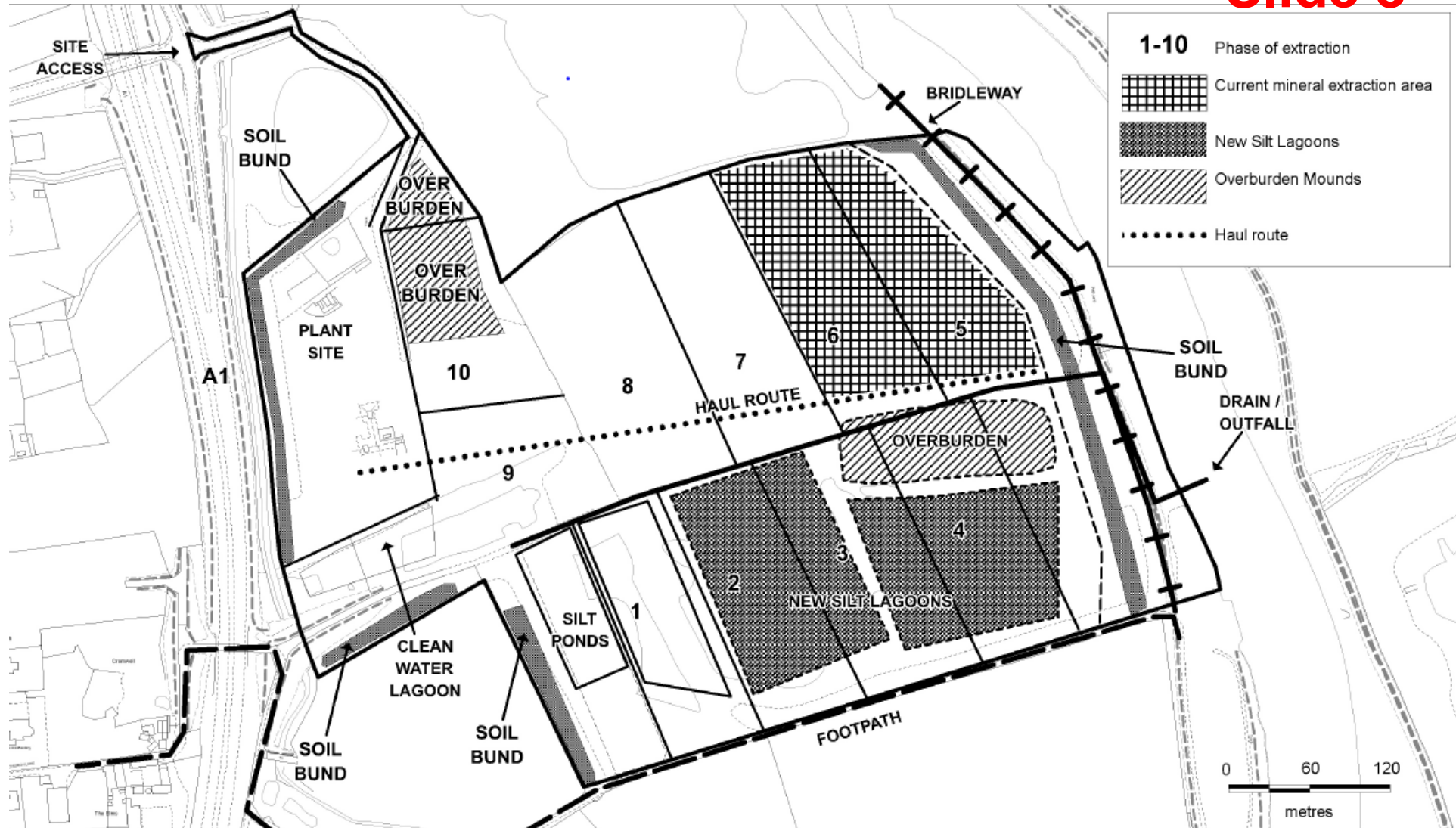
## Slide 2



**Nottinghamshire  
County Council**

Cromwell Quarry

## Slide 3

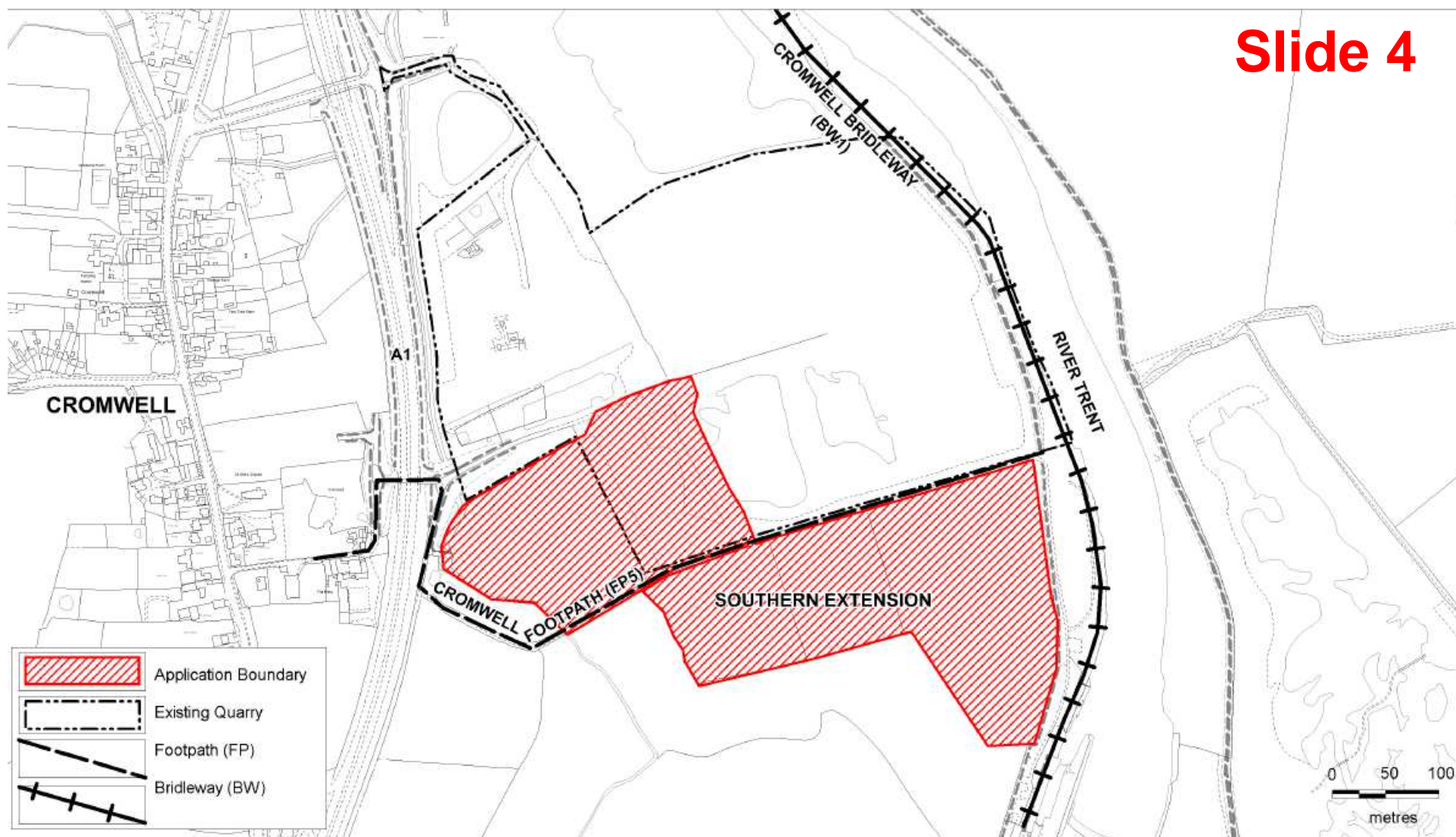


Nottinghamshire  
County Council

Cromwell Quarry



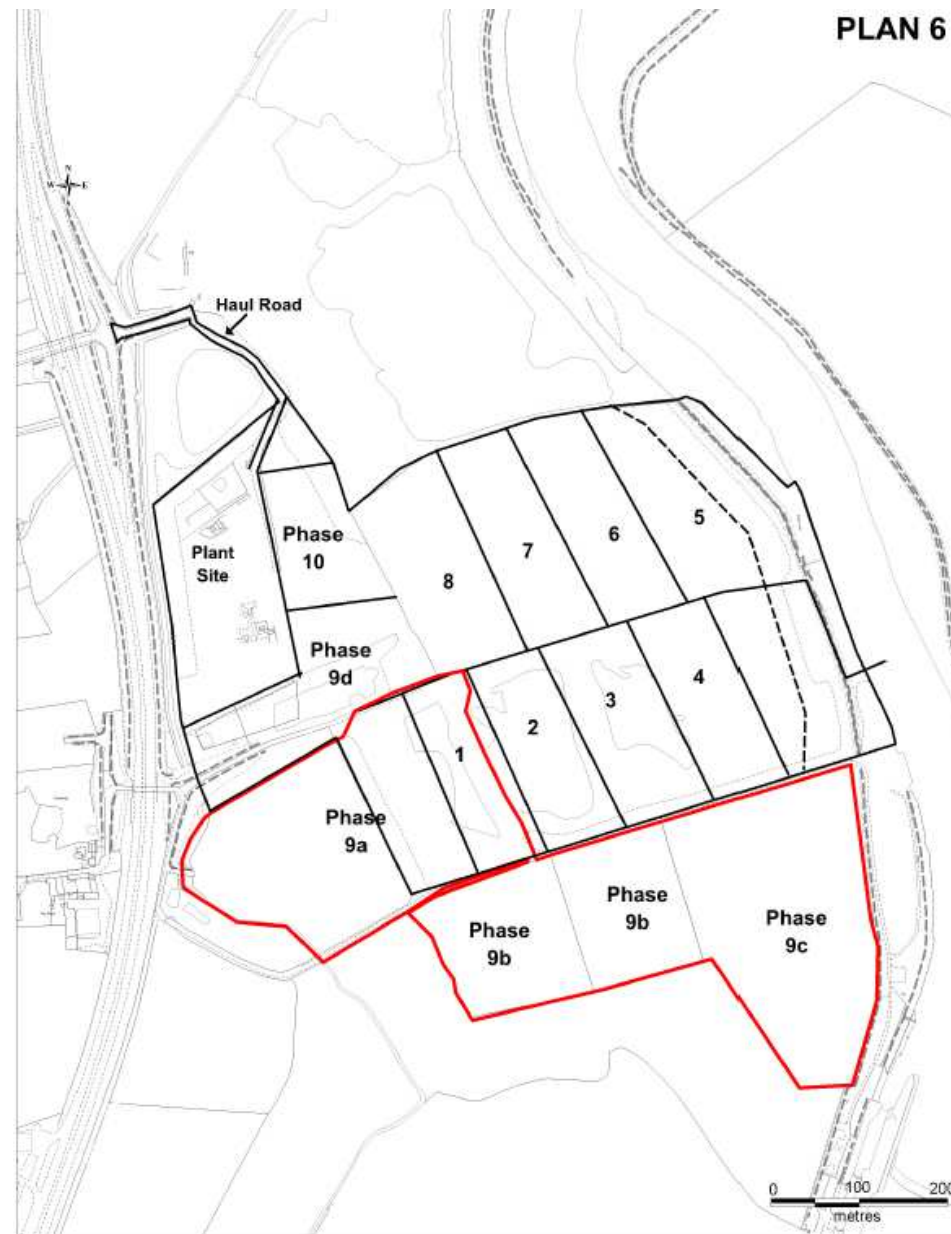
## Slide 4



**Nottinghamshire  
County Council**

Cromwell Quarry

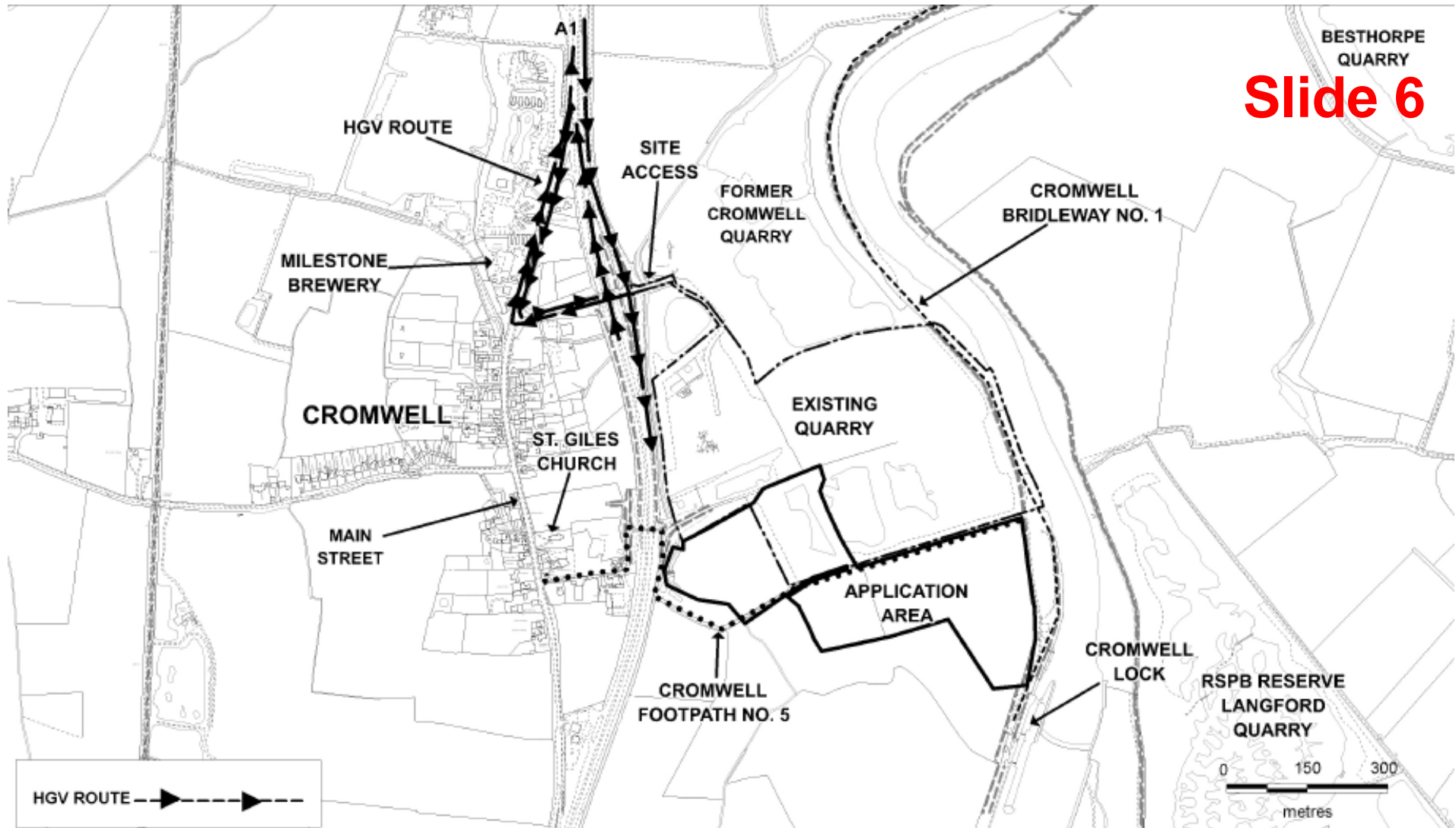
## Slide 5



**Nottinghamshire  
County Council**

Cromwell Quarry

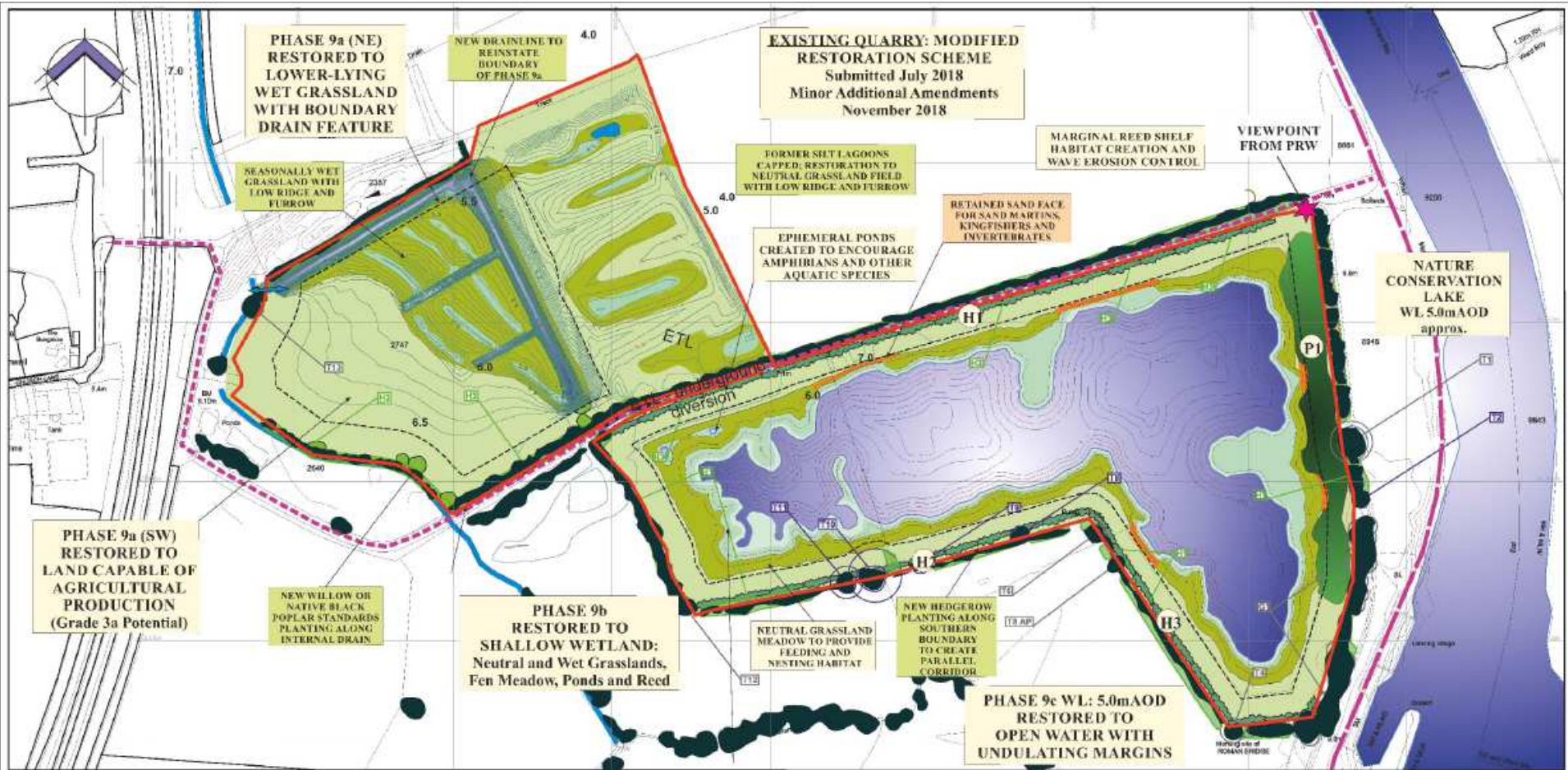
## Slide 6



Nottinghamshire  
County Council

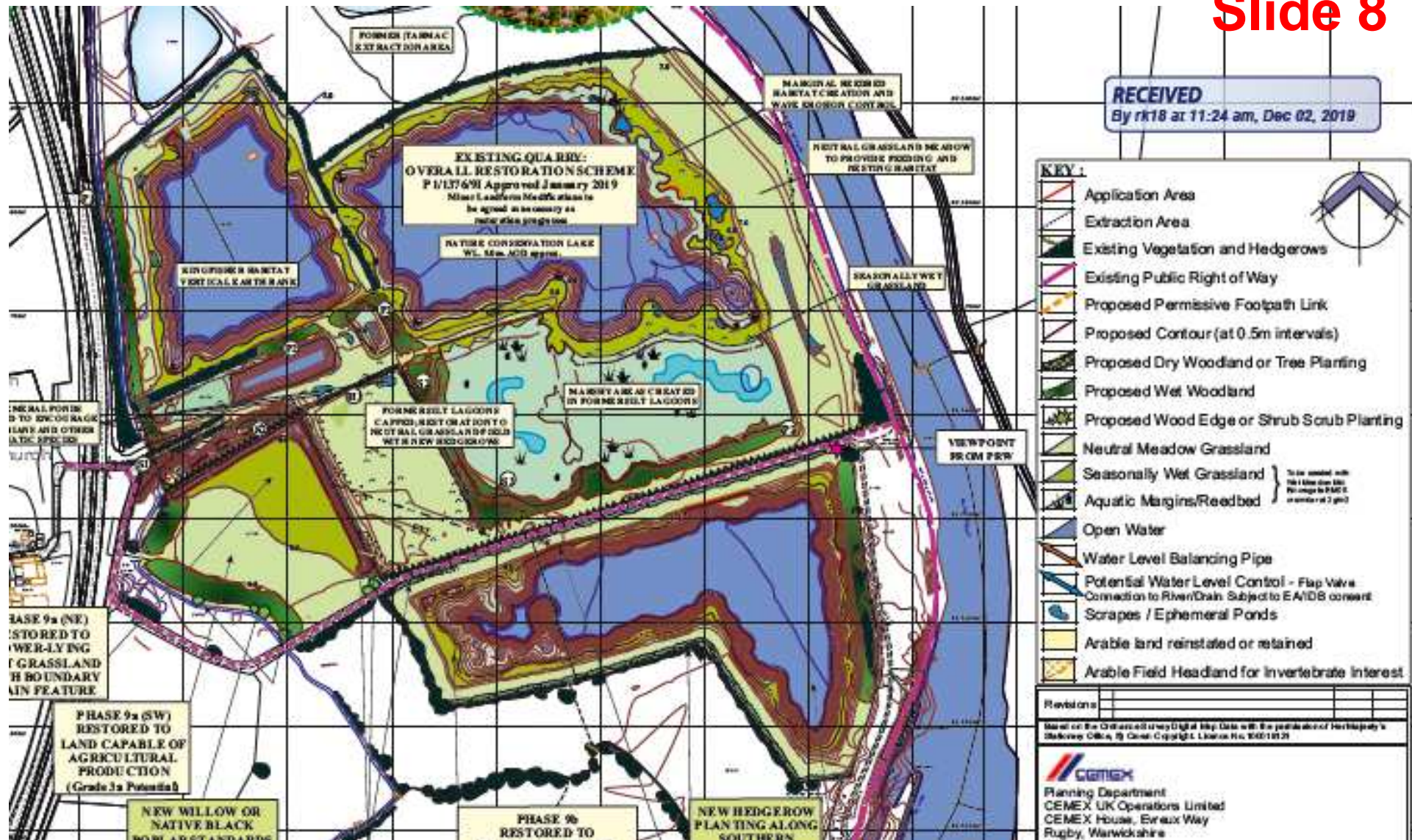
Cromwell Quarry







# Slide 8



**Nottinghamshire  
County Council**

**Cromwell Quarry**



## Slide 9



**Nottinghamshire  
County Council**

Cromwell Quarry

**Viewpoint 1: Public footpath 5 and Cromwell Lock access road, looking south east over Phase 9c**



**Viewpoint 2: Public footpath 5 and Cromwell Lock access road, looking south east over Phase 9b**



**Viewpoint 3: Bridleway and access road, looking west towards Phase 9c of the extension area and Cromwell quarry plant area**





**It is RECOMMENDED that:**

- a. Planning permission be granted for planning application 3/19/02231/CMM, subject to the conditions set out in Appendix 1.**
- b. Planning permission be granted for planning application 3/19/02232/CMM, subject to the conditions set out in Appendix 2.**
- c. Planning permission be granted for planning application 3/19/02233/CMM subject to the conditions set out in Appendix 3.**