

# Place Department



**Adrian Smith**  
**Corporate Director & Deputy**  
**Chief Executive**



**Nottinghamshire**  
**County Council**

# The Nottinghamshire Plan 2021-2031

Healthy Prosperous Green

The Nottinghamshire Plan is ambitious for all our futures in creating a healthier, more prosperous, and greener Nottinghamshire



 Nottinghamshire  
County Council

- Approved at full Council – 25<sup>th</sup> November 2021
  - Improving health and well-being in all our communities
  - Growing our economy and improving living standards
  - Reducing the County's impact on the environment
  - Helping everyone access the best of Nottinghamshire.

# Council Plan Ambitions

- 4 themes supported by 9 ambitions
  1. Helping our people live healthier, more independent lives
  2. Supporting our county's communities and families
  3. Keeping vulnerable children, adults, and communities safe
  4. Building skills that help people to get good local jobs
  5. Strengthening businesses and creating more good-quality jobs
  6. Making Nottinghamshire somewhere people love to live, work and visit
  7. Attracting investment in infrastructure, economy, and green growth
  8. Improving transport and digital connections
  9. Protecting the environment and reducing our carbon footprint.



**Nottinghamshire  
County Council**



# Universal place services

- The foundation on which everything is built
- Over 850,000 people use our services every day
- We're there at every stage and event of life
- The front line interface with elected Members
- The cornerstone of making Notts a great place to live
- Our performance is good and maintained through new financial context



Nottinghamshire  
County Council

# Place Department

- Two Divisions

## Investment & Growth

- Planning
- Growth, Infrastructure & Economic Development
- Property Asset Management
- HS2

Service Director – Matthew Neal



# Place Department cont.

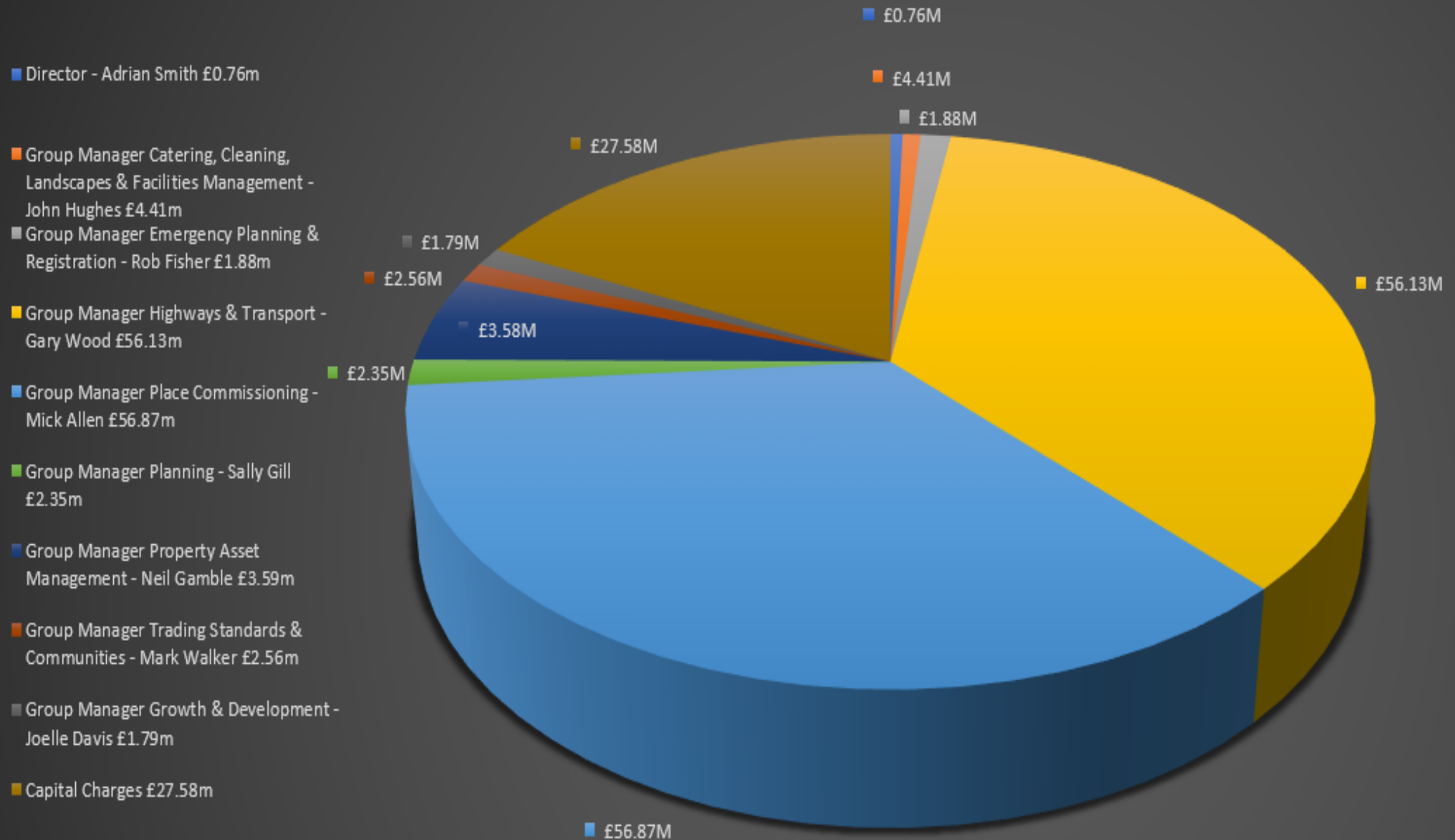
Place & Communities – focus on direct service provision

- Catering and Facilities Management
- Trading Standards & Communities
- Emergency Planning & Registration
- Highways, Transport and Flood Risk
- Waste disposal
- Libraries and cultural services
- Property maintenance and construction
- Carbon reduction

Service Director Derek Higon



# 2022-23 Place Department Original Budget £157.91M



**Nottinghamshire  
County Council**

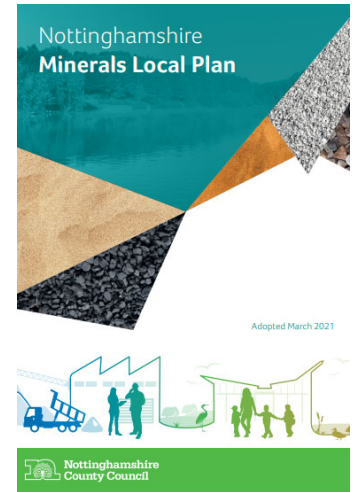
# Place Leadership Team

Name	Title		Name	Title
Adrian Smith	Corporate Director Place		Derek Higton	Service Director Communities & Place
Matthew Neal	Service Director Investment & Growth		John Hughes	Group Manager Catering, Facilities
Sally Gill	Group Manager Planning		Rob Fisher	Group Manager Emergency Planning & Registration
Joelle Davies	Group Manager Growth Infrastructure & Economic Development		Mark Walker	Group Manager Trading Standards & Communities
			Fiona Needham	Acting Head of Trading Standards
Neil Gamble	Group Manager Property & Asset Management		Gary Wood	Group Manager Highways & Transport
			Mick Allen	Group Manager Place Commissioning



# Planning

- Planning Policy
- Highways Development Control
- Conservation



# Growth, Infrastructure and Development

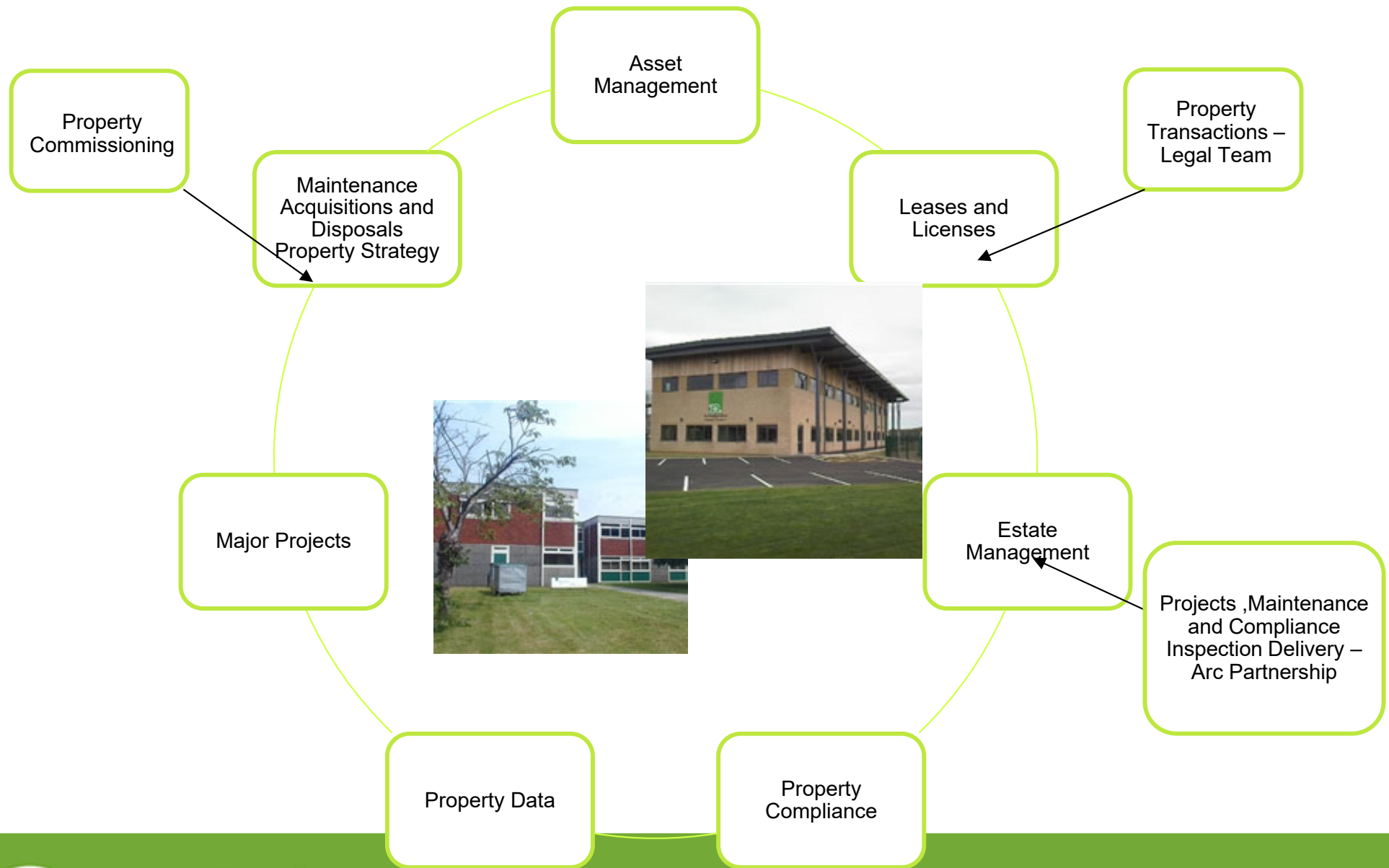
Lead: Sonja Smith

Lead: Nicola Stevens



**Nottinghamshire  
County Council**

# Property



**Nottinghamshire  
County Council**

# **Catering & Facilities Management**

- School catering - £18m annual turnover, 38,000 meals per day. 250 primary and secondary schools served. 900 employees.
- Cleaning and facilities management - £15.5m annual turnover, serving Council premises 300 schools and other public sector premises. 1000 employees.
- County Enterprise Foods – “meals on wheels” for Adult Social Care Clients, + paid for meals service and contracts. £4m annual turnover. Supported employment model.

# Emergency Planning & Registration Services



- Planning and preparing for the County Councils part in a multi-agency response to an emergency affecting Nottinghamshire communities
- Business Continuity
- Safety of Sports Grounds
- Registration and Celebratory Services





# Trading Standards & Communities

- **Trading Standards**
  - Weights & Measures, Food standards, Fair Trading/Fraud, Animal Health
  - Commercial Services
  - Regional Investigations Team
- **Communities**
  - Community Support Hub
  - Community Early Help & Support
  - Homes for Ukraine
  - Household Support Fund
  - Armed Forces & Queens Platinum Jubilee
  - Community safety



# Highways & Transport

- Transport Strategy & Programmes (LTP)
- Traffic Manager Enforcement
- Highways Contract Management
- Flood Risk Management
- Countryside Access
- Transport: Travel Services
- Transport: Developments & Partnership



# Place Commissioning

- Climate Emergency & Net Zero Strategy
- Energy and Carbon Management
- Waste Management
- Property Commissioning
- Schools PFI
- Cultural Services



Nottinghamshire  
County Council