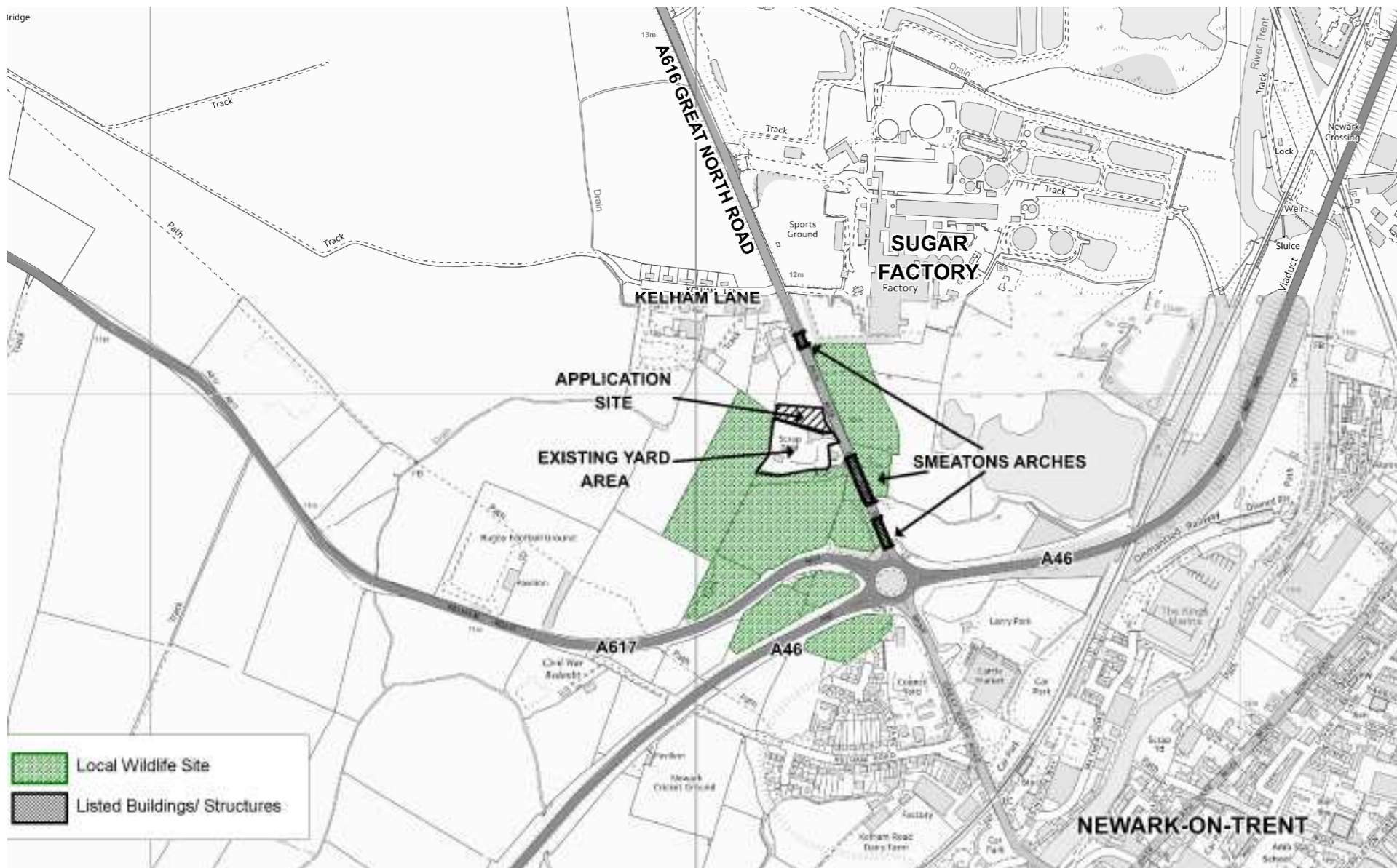


**Change of use of land to allow for
the extension of the existing yard
including the raising of ground
levels, new external walls and
new additional highway access**

Briggs Metals, Great North Road,
Newark On Trent, NG24 1DP

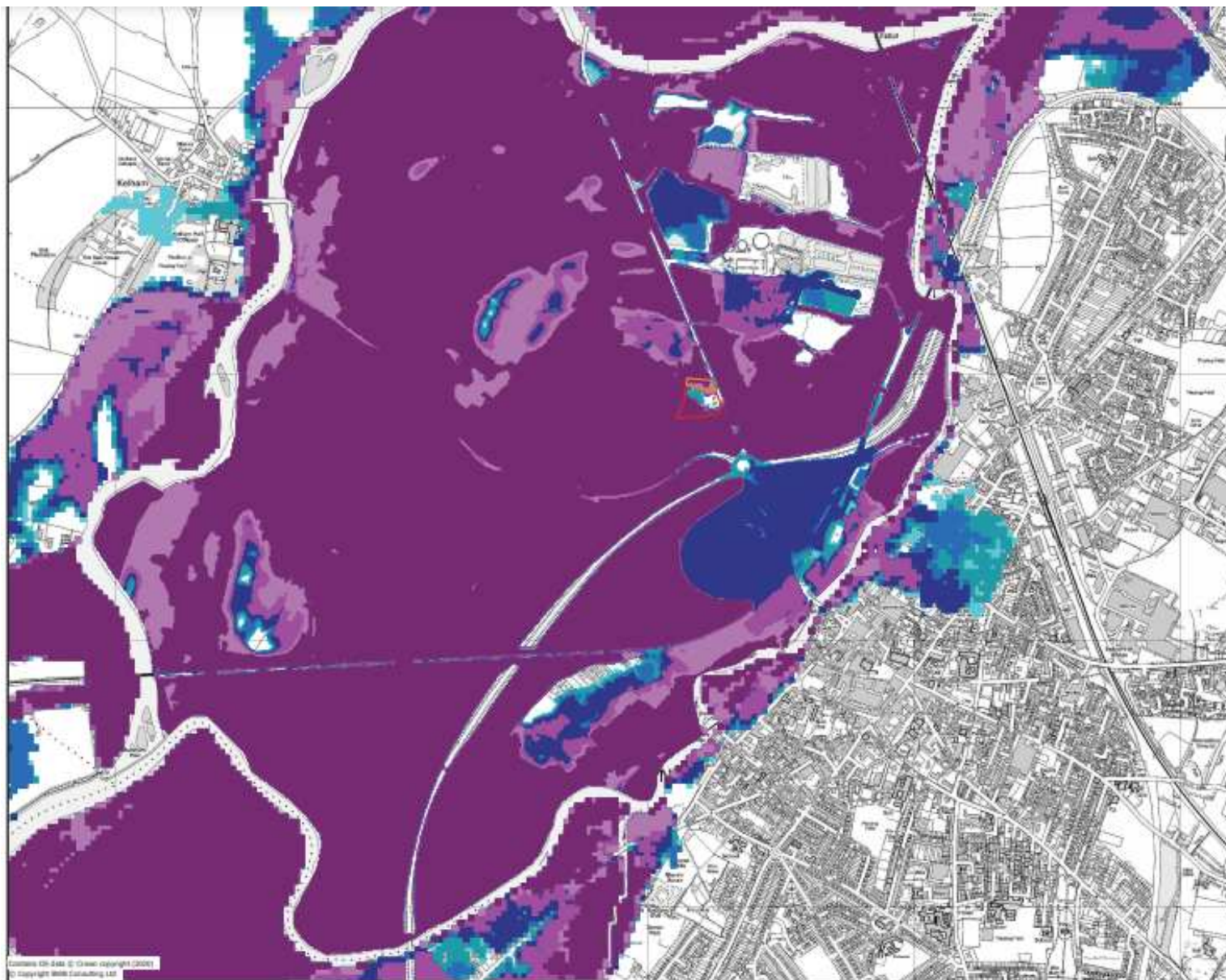


**Nottinghamshire
County Council**



**Nottinghamshire
County Council**

Briggs Metals

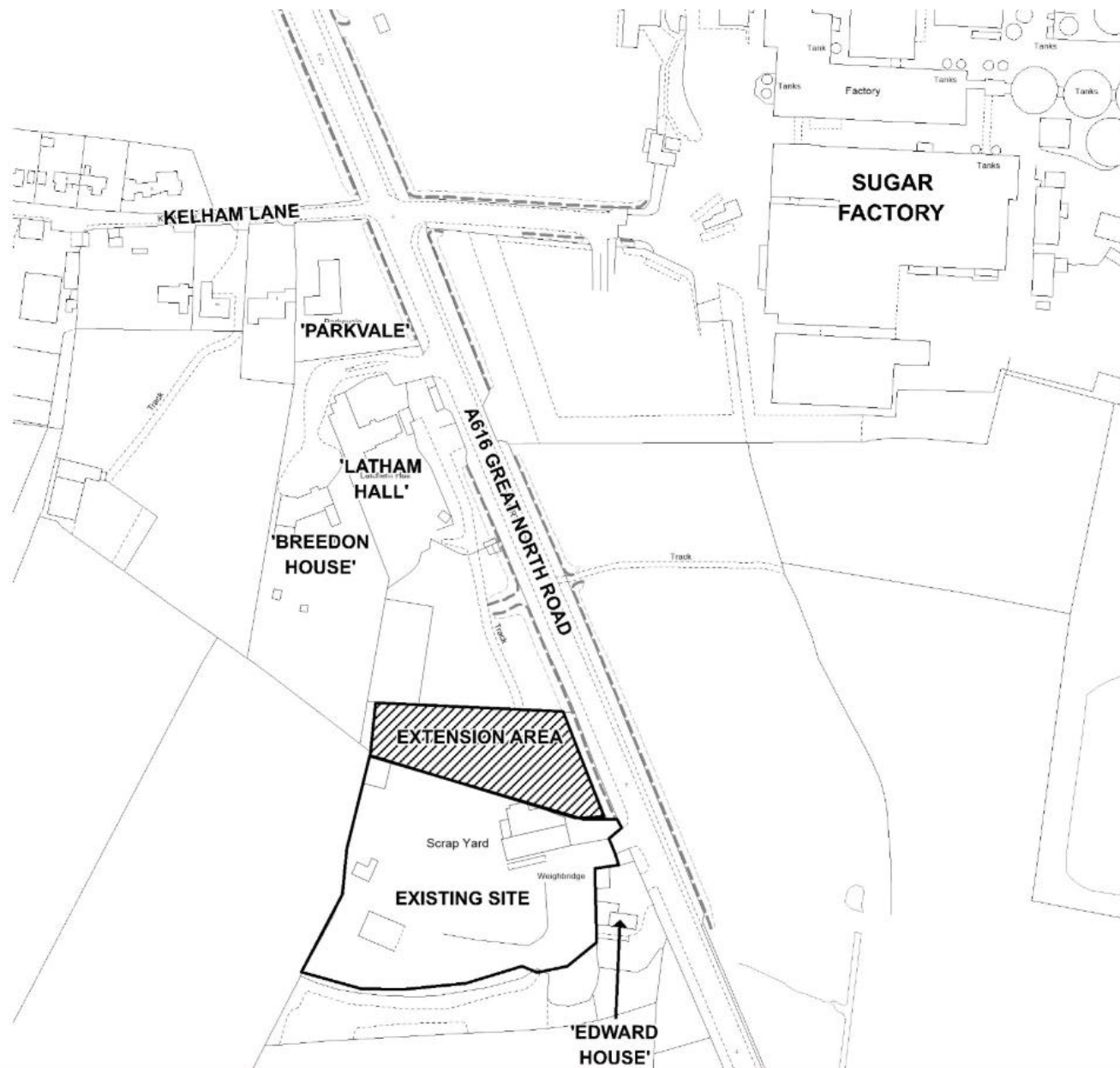


**Extent of
floodplain
west of
Newark**



**Nottinghamshire
County Council**

Briggs Metals



**Nottinghamshire
County Council**

Briggs Metals



2016



**Nottinghamshire
County Council**

Briggs Metals



**Nottinghamshire
County Council**

Briggs Metals



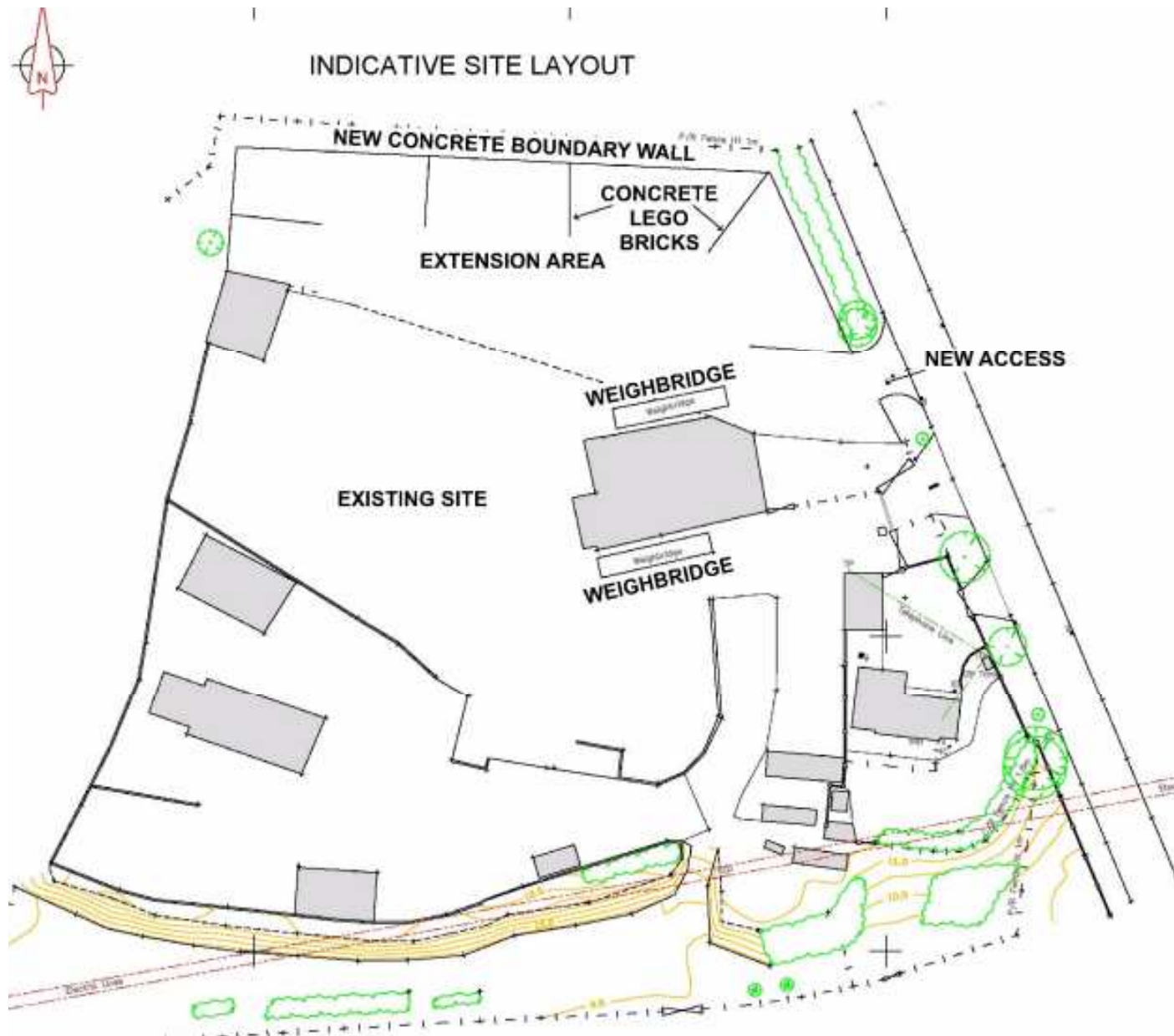
**Nottinghamshire
County Council**

Briggs Metals



**Nottinghamshire
County Council**

Briggs Metals



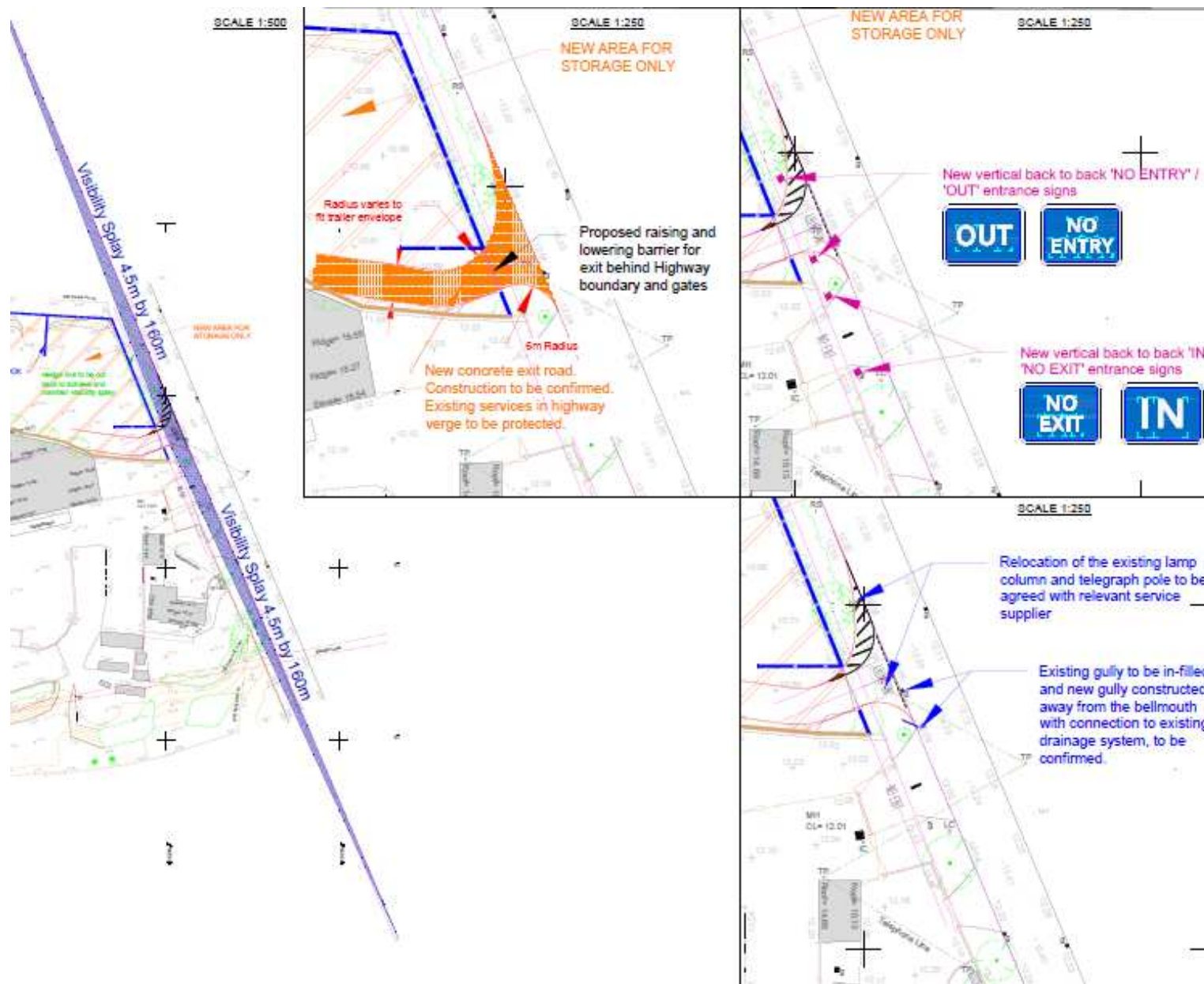
**Nottinghamshire
County Council**

Briggs Metals



**Nottinghamshire
County Council**

Briggs Metals



**Nottinghamshire
County Council**

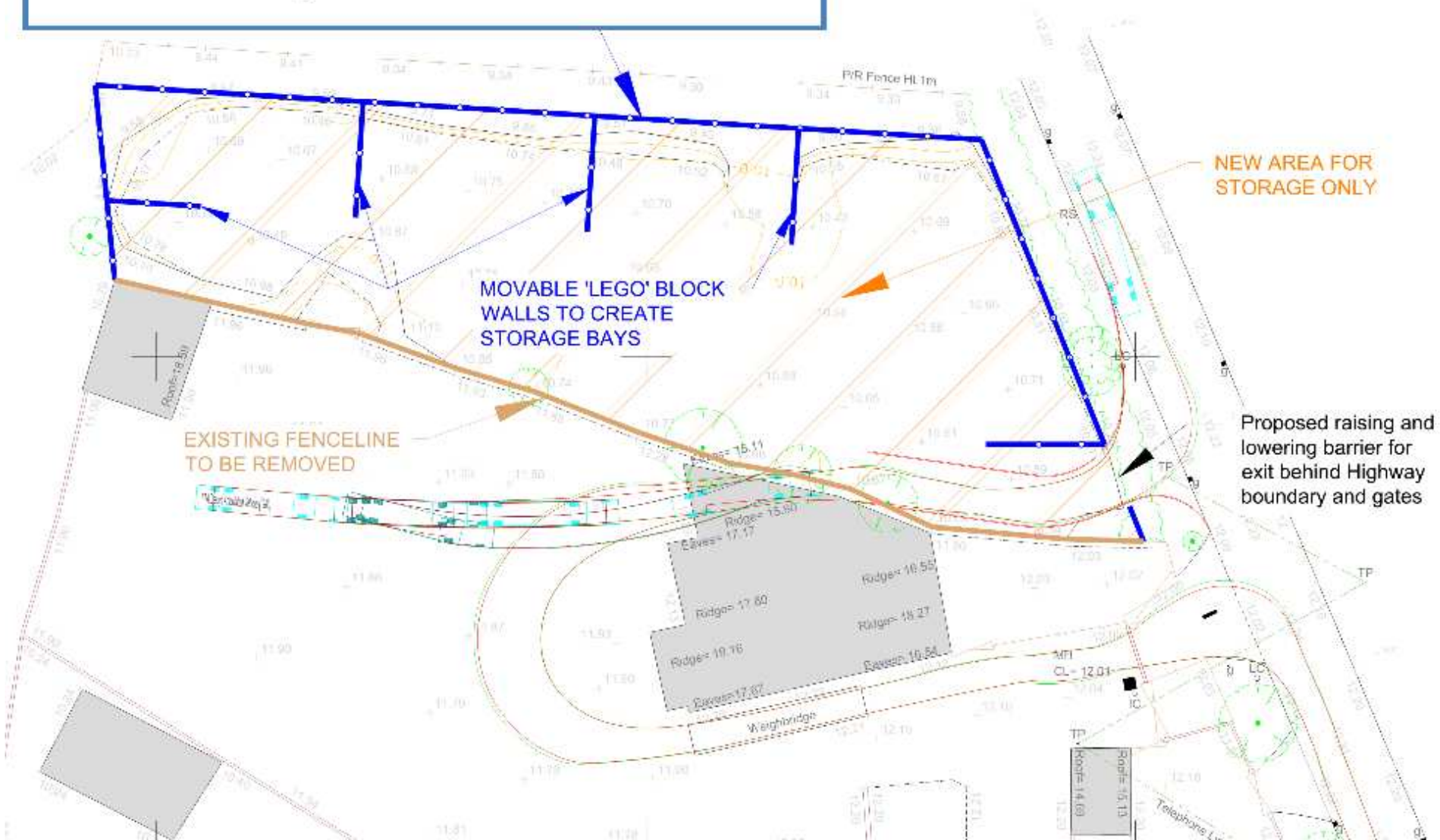
Briggs Metals



**Self set trees on boundary
to be removed**



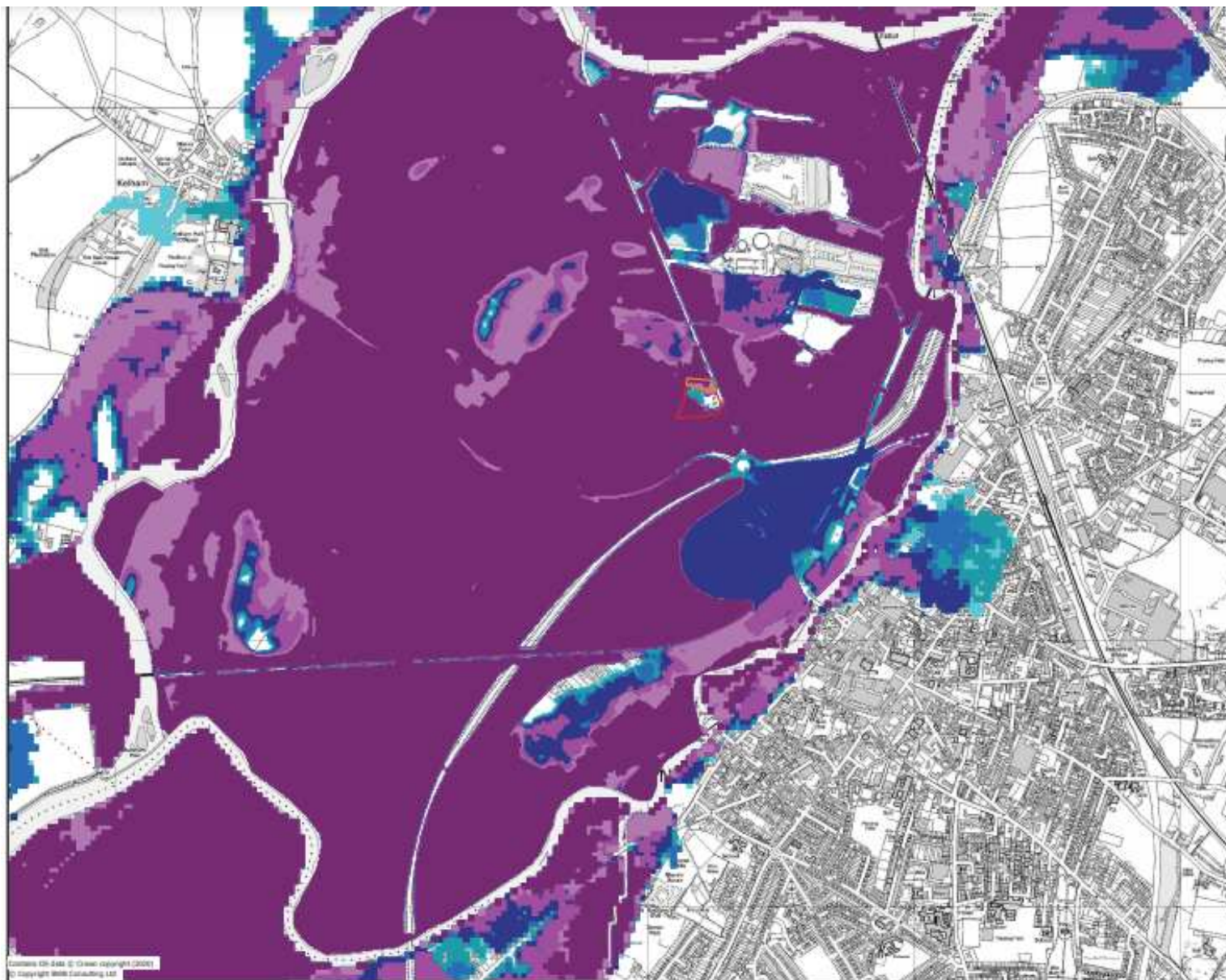
New **6m** high concrete blocks wall





Example of concrete wall and photo of new trees planted





**Extent of
floodplain
west of
Newark**



**Nottinghamshire
County Council**

Briggs Metals

Evidence of tipping in 2010



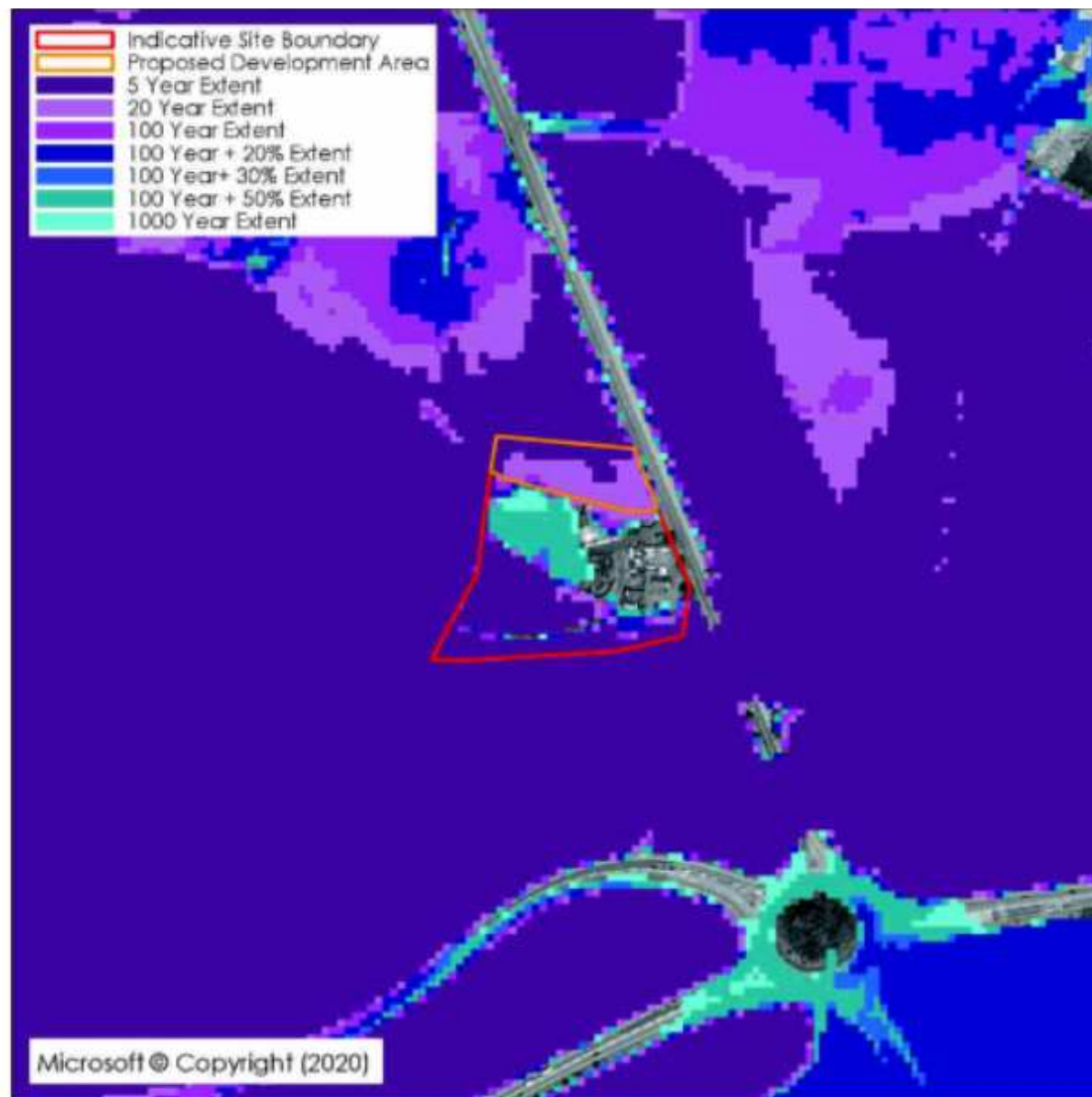


15/09/2017



**Nottinghamshire
County Council**

Briggs Metals



Floodplain detail

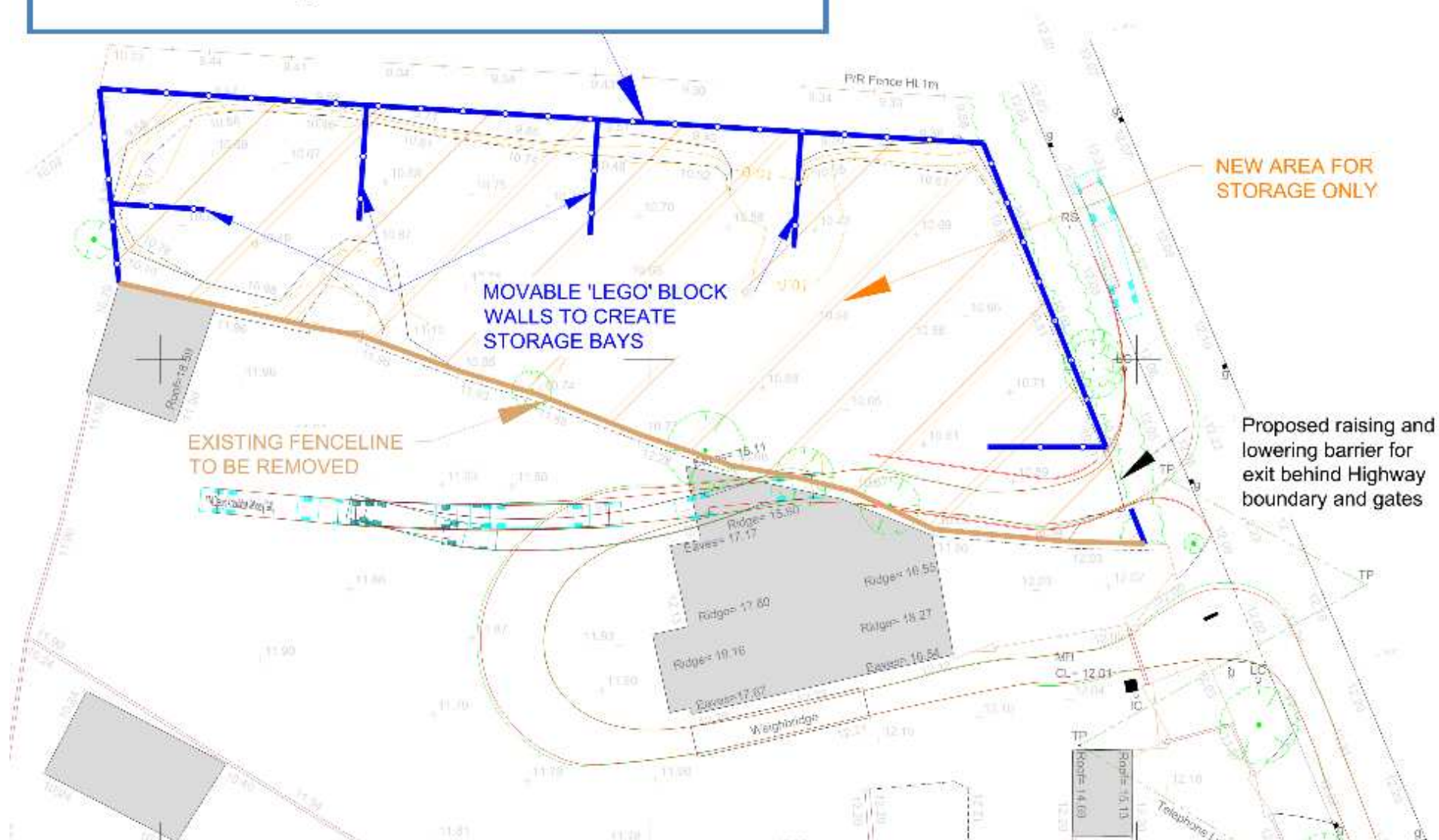
Figure 3.1: Baseline Floodplain Extents



**Nottinghamshire
County Council**

Briggs Metals

New **6m** high concrete blocks wall



**Nottinghamshire
County Council**

Briggs Metals



**Nottinghamshire
County Council**

Briggs Metals

Recommendation: Refuse planning permission



**Nottinghamshire
County Council**

Briggs Metals

