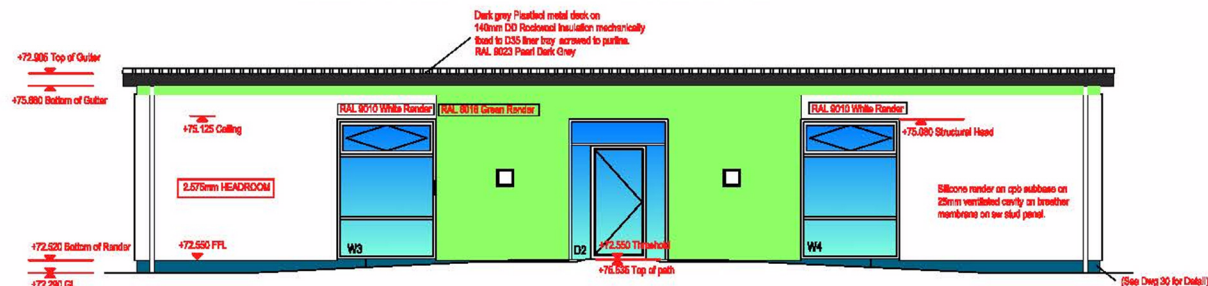
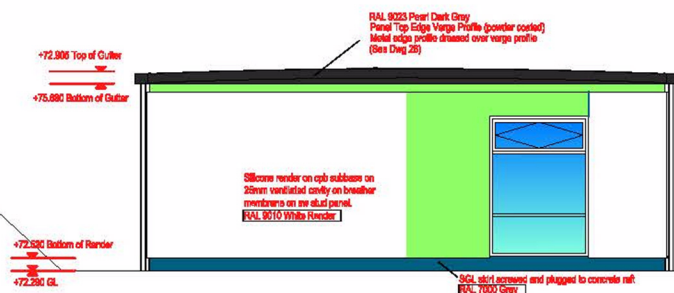


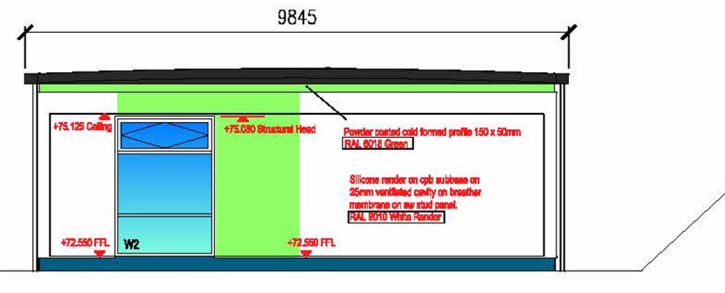
ELEVATION TO PLAYGROUND



ELEVATION TO STAFF CAR PARK



ELEVATION TO SCHOOL



ELEVATION TO BOUNDARY

No Window

Upper School: Erection of single storey 60 place freestanding double classroom with associated steps and ramp access. Lower School: demolition of No.1 boiler shed and excavation to enlarge existing staff car park, and provision of new hard play area  
Stanhope Primary and Nursery School, Keyworth Road, Gedling  
Planning Application No. 7/2015/1450NCC

This map is reproduced from Ordnance Survey material with the permission of Ordnance Survey on behalf of the Controller of Her Majesty's Stationery Office © Crown copyright. Unauthorised reproduction infringes Crown copyright and may lead to prosecution or civil proceedings. (1000019713) (2016)



Not to Scale  
Produced by: JW  
Date: MAY 2016

PLAN 5