

# Rempstone Bridleway no 11

## Temporary diversion



Scale 1:2500

Produced by: j baines

Date: 29/06/2010



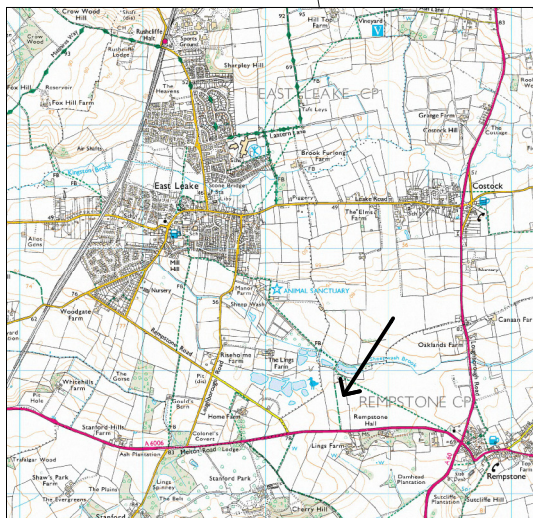
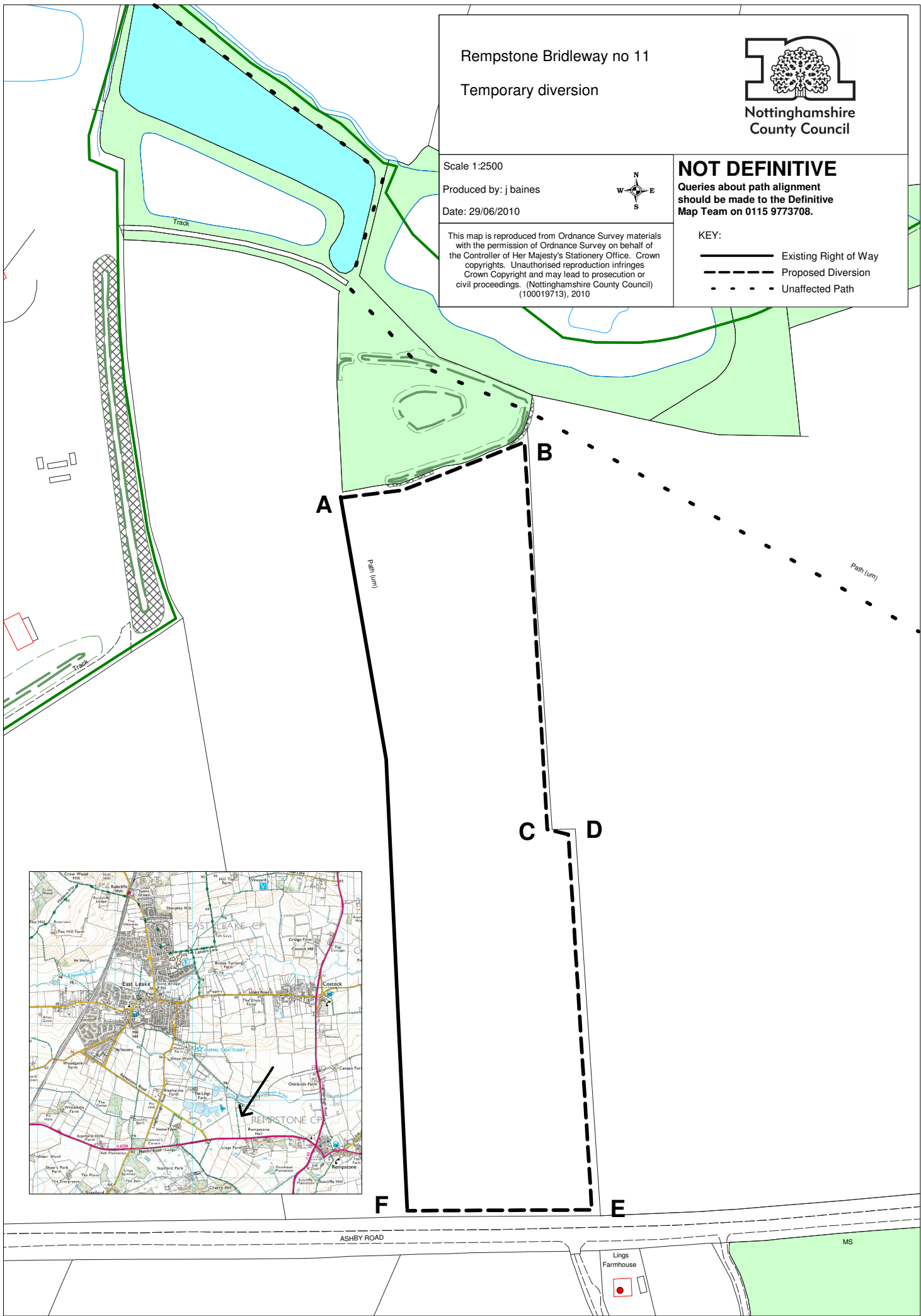
### NOT DEFINITIVE

Queries about path alignment should be made to the Definitive Map Team on 0115 9773708.

This map is reproduced from Ordnance Survey materials with the permission of Ordnance Survey on behalf of the Controller of Her Majesty's Stationery Office. Crown copyrights. Unauthorised reproduction infringes Crown Copyright and may lead to prosecution or civil proceedings. (Nottinghamshire County Council) (100019713), 2010

#### KEY:

- Existing Right of Way
- - - Proposed Diversion
- . . . . . Unaffected Path



ASHBY ROAD

Lings Farmhouse

MS