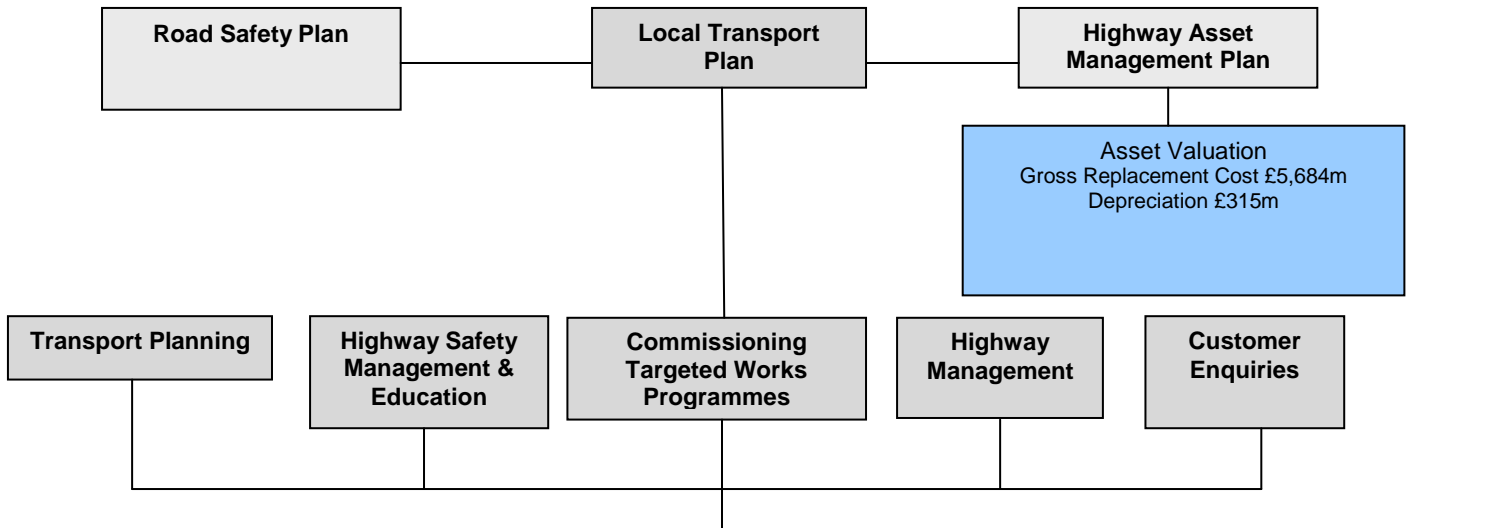


# Highways Division



FINANCE	
<b>Revenue</b>	
2013/14	2014/15
£29.1m	£24.1m
<b>Capital 2014/15</b>	
Major Schemes	£14.1m
Road Maintenance	£14.1m
Street Lighting (Columns Replacement)	£1.5m
Street Lighting (Energy Saving)	£1.1m
Flood Alleviation	£600k
Road Safety	£350k
Integrated Transport Measures	£7.0m
Ref 27.2.14 Council approval	

PERFORMANCE MEASURES
<b>Road Condition</b> (% needing repair) Principal (A roads) – 1.7% [ 4%] Non- Principal (B & C roads) – 8.1% [ 9% ] Unclassified – 20.8% [19%]
<b>Congestion</b> Journey time per mile during morning peak (average mins) ### [ 3.29 mins ]**
<b>Highway Safety</b> People killed or seriously injured 46.3% reduction at quarter1 from the 2005-9 baseline of 123 to 66 Children killed or seriously injured – 67.2% reduction at quarter 1 from the 2005-9 baseline of 12.2 to 4.
<b>Street Lighting</b> Street Lighting Repairs 20 .0 days [ 7 days]
<b>Development Control</b> (% response in target time) Development Control Applications– 93% [ 95%] Development Control enquiries – 97% [ 90%]
### Data available in the Autumn 2014

CUSTOMER SATISFACTION from National Highways and Transport survey
Overall Highways & Transport 55.4% (Highest 57.6%) (2012 – 58.8%) (2011-57.1%)
Highways maintenance 46.5% (Highest 50.4%) (2012 -47.5% (2011-48.1%)
Walking & cycling facilities 53.1% (Highest 57.3%) (2012 – 55.24%) (2011-56.7%)
Tackling congestion 56.0% (2012 -56.1%) (2011 – 53.3%)
Road safety 52.0% (Highest 56.4%) (2012 – 55.3%) (2011 -61.4%)

MAJOR SCHEME DELIVERY
A453 (T) Road Improvement Main contract started January 2013 Completion May 2015
A1 Elkesley (Trunk Road) Work has commenced with expected completion Jan/Feb 2015
Hucknall Town Centre Planning Consent Granted December 2013 Land acquisition continues. Subject to Dft final approval, work starts 2015
Workshop Bus Station Scheme in development, main contractor appointed. Planning consent granted: aim to start work summer 2014 and open summer 2015.
NET Phase 2 Extension Work ongoing with expected completion early 2015.

RISK MANAGEMENT																														
<b>Safety Inspections</b> Number of defects identified* Average Number of days to repair a Category 1 (urgent) defect * Average Number of days to repair a Category 2 (high) defect* Average Number of days to repair a Category 2 (low) defect*																														
<b>Highways Insurance Claims</b>																														
<table border="1"> <thead> <tr> <th></th> <th>2009-10</th> <th>2010-11</th> <th>2011-12</th> <th>2012-13</th> <th>2013-14</th> </tr> </thead> <tbody> <tr> <td>Number of accidents occurring</td> <td>754</td> <td>761</td> <td>520</td> <td>680</td> <td>683</td> </tr> <tr> <td>Of above number settled</td> <td>749</td> <td>741</td> <td>489</td> <td>631</td> <td>322</td> </tr> <tr> <td>Claims Repudiated</td> <td>577</td> <td>567</td> <td>370</td> <td>487</td> <td>198</td> </tr> <tr> <td>% of Claims Settled Repudiated</td> <td>77%</td> <td>77%</td> <td>76%</td> <td>77%</td> <td>61%</td> </tr> </tbody> </table>		2009-10	2010-11	2011-12	2012-13	2013-14	Number of accidents occurring	754	761	520	680	683	Of above number settled	749	741	489	631	322	Claims Repudiated	577	567	370	487	198	% of Claims Settled Repudiated	77%	77%	76%	77%	61%
	2009-10	2010-11	2011-12	2012-13	2013-14																									
Number of accidents occurring	754	761	520	680	683																									
Of above number settled	749	741	489	631	322																									
Claims Repudiated	577	567	370	487	198																									
% of Claims Settled Repudiated	77%	77%	76%	77%	61%																									
Q4 2013/14 240 Highways claims received Q3 2013/14 141 Highways claims received Q2 2013/14 163 Highways claims received Q1 2013/14 208 Highways claims received Q1 2014/15 176 Highways claims received																														
<b>Note as more claims are settled, the repudiation rates will change.</b> Also, further claims may occur related to previous years; claims can be made up to 3 years from the date of the accident.																														
<b>Complaints data</b> 2013/14 Q4 65 recorded complaints 2013/14 Q3 61 recorded complaints 2013/14 Q2 100 recorded complaints 2013/14 Q1 33 recorded complaints 2014/15 Q1 72 recorded complaints																														

\*indicates being developed or data currently unavailable