



Nottinghamshire County Council

Culture Committee

Date: Tuesday, 02 October 2012
Time: 10:30
Venue: County Hall
Address: County Hall, West Bridgford, Nottingham NG2 7QP

AGENDA

- | | | |
|----------|--|----------------|
| 1 | <u>Minutes of the last meeting held on 4 Sept 2012</u>
Details | 3 - 6 |
| 2 | <u>Apologies for Absence</u>
Details | 1-2 |
| 3 | <u>Declarations of Interests by Members and Officers:- (see note below)</u>
(a) Disclosable Pecuniary Interests
(b) Private Interests (pecuniary and non-pecuniary) | 1-2 |
| 4 | <u>Establishment of a fixed term Heritage Development Officer Post at Bestwood Country Park with Herita</u>
Details | 7 - 12 |
| 5 | <u>Local Improvement Scheme Heritage and Conservation Projects</u>
Details | 13 - 18 |
| 6 | <u>Heritage Lottery Fund Strategic Framework 2013-18</u>
Details | 19 - 22 |
| 7 | <u>Work Programme</u>
Details | 23 - 26 |

minutes

Meeting	CULTURE COMMITTEE
Date	4 September 2012 (commencing at 10.30 am)

Membership

Persons absent are marked with `A`

COUNCILLORS

John Cottee (Chairman)
Liz Yates (Vice-Chairman)
A Fiona Asbury
Chris Barnfather
Barrie Cooper
Michelle Gent
John Knight
Darrell Pulk
Gail Turner
Wendy Quigley
Gordon Wheeler

Ex-officio (non-voting)

A Mrs Kay Cutts

OTHER COUNCILLORS IN ATTENDANCE

Councillor Mel Shepherd

OFFICERS IN ATTENDANCE

Steve Bradley – Group Manager, Cultural and Enrichment Services
Sally Gill – Group Manager Planning
Neil Robinson – Group Manager, Investments and Treasury Management
Nick London – Team Manager, Library Resources
Liz Edwards – Libraries, Archives and Information

Martin Gately – Democratic Services

MINUTES OF THE LAST MEETING HELD ON 26 JUNE 2012

The minutes of the last meeting were agreed.

APOLOGIES FOR ABSENCE

Apologies for absence were received from Councillor Asbury who is unwell.

DECLARATIONS OF INTEREST

None.

LIBRARIES AND ARCHIVES AND COUNTRY PARKS CAPITAL PROJECTS

In response to councillors' comments about the pledge summary it was agreed that a summary of customer feedback and the views captured from focus groups should be reported to a future meeting of the committee.

RESOLVED: 2012/011

That the update on capital projects be noted.

A STRATEGY FOR NOTTINGHAMSHIRE'S LIBRARIES – 6 MONTHLY PROGRESS REPORT

RESOLVED: 2012/012

That the progress report be noted.

WEST BRIDGFORD LIBRARY AND YOUNG PEOPLE'S CENTRE PROJECT UPDATE

In response to councillors' comments it was agreed that Members of the committee would have the opportunity to visit the new West Bridgford Library before it opened to the public.

RESOLVED: 2012/013

- 1) That the establishment of an additional 1 fte Library Building Officer post be approved
- 2) That the contents of the report be noted.

WORK PROGRAMME

During discussion Members granted permission for the Historic Environment Record item to be deferred to either the late October or November meetings. In addition, Members requested library usage figures for the whole county along with a comparison of opening hours. Members also requested greater detail on the Shining Stars/Rising Stars Programmes.

RESOLVED: 2012/014

That the Committee's work programme be noted.

The meeting closed at 11:30 am.

CHAIRMAN

REPORT OF THE GROUP MANAGER, COUNTRY PARKS**ESTABLISHMENT OF A FIXED TERM HERITAGE DEVELOPMENT OFFICER
POST AT BESTWOOD COUNTRY PARK, WITH HERITAGE LOTTERY
FUNDING****Purpose of the Report**

1. To seek approval to establish a fixed term (2 year) full time post of Heritage Development Officer, attached to Bestwood Winding Engine House, within Bestwood Country Park, to be funded by a grant from the Heritage Lottery Fund (HLF).

Information and Advice

2. Bestwood Winding Engine House and Dynamo House are the last remaining parts of former Bestwood Colliery. The Engine House and its Victorian engine are County Council owned, and constitute a Scheduled Ancient Monument of national significance for industrial archaeology.
3. The buildings were completely renovated and opened to the public with the assistance of a £1.2m grant from the Heritage Lottery Fund, and opened to the public in 2010. They are currently shown to the public on a limited opening hours basis by a small but dedicated group of community volunteers, who also maintain and run the 1876 Winding Engine.
4. The Heritage Lottery Auditor and Case Officer recently received the final report on the project from the Country Parks Service. Whilst much has been achieved since the building was opened in 2010 (including a national quality award for Visitor Welcome), Heritage Lottery wish to see increased outputs, including increased public opening hours and higher visitor numbers, but also greater community engagement with the project and production of a set of site specific learning resources.
5. To assist us to deliver these outputs, they have offered to release up to £65,000 over a two year period to create a post of Heritage Development Officer, tasked to:
 - i. Recruit more volunteers with a long term aim of increasing community capacity to open the building to the public
 - ii. Train more volunteers to carry out essential maintenance of the historic engine.
 - iii. Enable increased opening hours
 - iv. Develop a programme of community engagement including more public events at Dynamo House

- v. Develop a set of learning resources for groups, families and self led school parties.
6. As part of its contribution to this scheme, rather than commit to a 10% match funding normally required in order to release HLF funding, the Country Parks would host the post within its structure and cover the costs of any redundancy payable after the two year fixed term ends. Severance costs will vary according to the age and length of service of the appointee, and may not be apply at all. It is estimated that the probable cost will be around £2,000, which is less than the match funding which would normally be expected for a project of this type.
 7. Heritage Lottery are very specific in their aims. They require the post to focus on the history and heritage of the site and if they are unsatisfied with outputs produced by funded projects, by the terms of our agreement with them, they reserve the right to request repayment of grant.

Other Options Considered

8. The existing community volunteer group have already been approached as to whether they could recruit more volunteers, increase capacity and increase their availability to open the building more days per week. They are a small group and do not feel this is possible. They already commit an impressive amount of time to maintaining and running the Winding Engine, and it would seem unreasonable to pressure them to do more. Their main focus is and always has been the mechanical preservation of the winding engine.
9. Some increased outputs could be generated by use of the Community Liaison Officer working within the Country Parks Service. However, as this officer works over four large parks, (and increasingly the 90 green space sites managed by the Authority), it is unrealistic to expect enough hours to be available to make a real impact. The Community Liaison Officer within the Country Parks service would also not have the specialist skill set required, specifically in history and industrial archaeology.

Reason/s for Recommendation/s

10. This is an excellent opportunity to develop a scheme that was part of the original application but for various reasons could not be then implemented. The terms of the grant agreement with Heritage Lottery encourage us to work in partnership to achieve agreed outputs. Co-operation in this is likely to positively influence any future HLF funding applications by the Authority. Increased community engagement, learning and conservation are desirable aims which the two partner organisations share.
11. The Country Parks Service has the line management and teams in place to effectively support and supervise a new dedicated post, but not to fully fund it.
12. The offer of up to £65,000 external funding is dependent on Committee approval for the post to be created.

Statutory and Policy Implications

13. This report has been compiled after consideration of implications in respect of finance, equal opportunities, human resources, sustainability and the environment and those using the service and where such implications are material they are described below. Appropriate consultation has been undertaken and advice sought on these issues as required.

Implications for Service Users

14. The new post will enhance the experience of Bestwood Country Park users and (it is hoped) will attract new users to the park. A main aim is for the post to foster greater community engagement and learning opportunities.

Financial Implications

15. The post will be funded by a grant from the Heritage Lottery Fund (subject to their final approval). Office accommodation is available at the County Council owned Dynamo House within Bestwood Country Park, and must be located there in order to facilitate community engagement.
16. The HLF grant will include a budget for events, volunteer training, the learning resources to be produced, and other essential items to enable the officer to deliver the required outputs.
17. The County Council Country Parks Service will line manage the post, and cover office sundries and other minor day to day expenses.
18. The post has yet to be submitted to the Job Evaluation Team to be graded. Based on similar types of post it is likely to be Grade 5.

Equalities Implications

19. As public bodies, The Heritage Lottery Fund and Nottinghamshire County Council both follow Equal Opportunity policies.

Human Resources Implications

20. Though the majority of salary and employer's on-costs are covered by the Heritage Lottery grant, the possible redundancy costs at the end of the two year fixed term post would need to be covered (should any arise) from the Departmental redundancy budget.
21. The post will be subject to the County Council's standing policies on redeployment. The fact that the Job Description will require some specialist skills in heritage and history means that it may not provide a match to County Council at risk staff in the redeployment pool and will thus need to go to external advertisement. The Heritage Lottery grant applied for thus includes an amount for advertising and recruitment.

RECOMMENDATION/S

That:

- 1) the creation of a two year post to be hosted by the County Parks and Green Estate Service and funded by the Heritage Lottery Fund, be approved
- 2) the Children, Families and Cultural Service Department will fund any redundancy payable after the two year fixed term ends, as part of its match funding contribution towards the grant, be noted.

Patrick Candler
Group Manager, Country Parks Service

For any enquiries about this report please contact:

Linda Hardy
Parks Development Officer
T: 01623 821328
E: linda.hardy@nottsc.gov.uk

Constitutional Comments (KK 18/09/12)

22. The proposals in this report are within the remit of the Culture Committee.

Financial Comments (NDR 18/09/12)

23. The financial implications are set out in paragraphs 15 to 18 of the report.

Background Papers

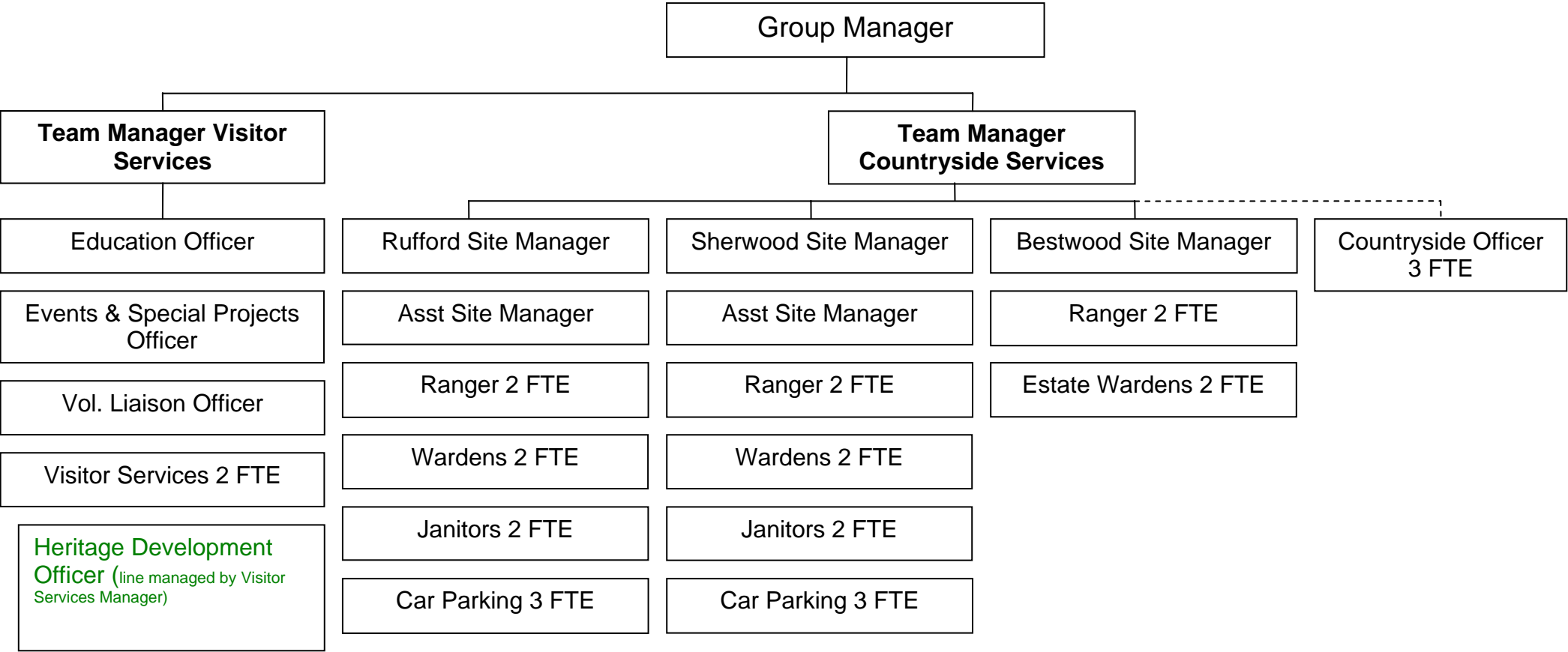
None.

Electoral Division(s) and Member(s) Affected

All.

C0052

**COUNTRY PARKS AND GREEN ESTATE 2012/13
Countryside Services**



Functions

Visitor engagement
Events planning
Education
Community liaison
Volunteering

Building Management
Site security
Site cleaning
Car Parking
Horticulture
Grounds maintenance
Event support

Conservation
Heritage
Contract management
Education
Estate management

REPORT OF THE GROUP MANAGER PLANNING**LOCAL IMPROVEMENT SCHEMES HERITAGE AND CONSERVATION
PROJECTS****Purpose of the Report**

1. To provide an update on the Heritage and Conservation projects being delivered through the County Council's Local Improvement Schemes in 2012/13.

Information and Advice

2. Priority Two of the County Council's Strategic Plan 2010 – 2014 is to promote the economic prosperity of Nottinghamshire and safeguard our environment and one of the key actions for delivery of this Priority is to "physically improve the local natural and historic environment through the delivery of the local improvement schemes programme".
3. Heritage and conservation schemes have been part of the overall Local Improvement Schemes programme since April 2005 (Year 2). They are delivered on behalf of the LIS programme by 3 F.T.E. temporary Community Conservation Project Officers in the Conservation Team, supported by the conservation and heritage specialists and working in partnership with local communities, volunteers, Parish Councils and organisations such as Groundwork. All of the Conservation and Heritage projects are instigated by local communities and groups and they are closely involved at all stages through to delivery. In 2011/12 almost 5000 hours of volunteer time were recorded. Some of the projects are also able to attract match funding from, for example, Heritage Lottery Fund, English Heritage and landfill tax, bringing £350,000 of additional funding into the County last year.
4. The 2012/13 programme of Local Improvement Schemes was approved by Cabinet on the 14th March 2012 and includes 62 heritage and conservation projects from both urban and rural communities across the County, with total County Council funding of just under £900,000. A list of the schemes is included in Appendix 1.
5. Projects to improve the natural environment include:
 - Supporting volunteer groups to enhance biodiversity and reduce flood risk by removing invasive non-native species such as Himalayan Balsam along the Rivers Maun and Meden in both Ashfield and Mansfield.
 - Planting native tree species in Worksop, Mansfield, Norwell and Arnold.
 - Creating community gardens in Beeston and Beckingham.
 - Contributing to a larger project to restore water meadows in Cuckney.
 - Enhancing a network of ponds in Southwell.
 - Creating a community orchard in Ruddington.
6. Improvements to the County's historic environment include:

- Work to help restore listed buildings and scheduled ancient monuments in Tuxford, Blidworth, Worksop and Newark.
 - The restoration or creation of seven war memorials.
 - Contributing to a much larger project to create a heritage centre in disused canal buildings at Beeston Lock, which will hopefully draw down over £0.5m of funding from the Heritage Lottery Fund.
 - The restoration of other heritage assets such as pinfolds (Scarrington), bandstands (Langold), clocks (Misterton) and a Miners' Banner (Ollerton).
7. There are also a range of projects to improve both physical and intellectual access to the County's environment such as the creation of heritage trails (e.g. Kimberley and Shelford), provision of interpretation (North Muskham, Arnold and Selston), graveyard surveys and mapping (Coddington) and allotment projects in for example Sutton in Ashfield and Calverton. Schemes also include improvements to paths, the provision of picnic tables and seating, planting wildflowers and hedges and the creation of sculptures and outdoor classrooms.
8. In addition to the potential £0.5million of additional funding for Beeston Lock heritage centre, a further £86,000 of match funding for other projects has been identified so far.

Other Options Considered

9. Not applicable.

Reason/s for Recommendation/s

10. The County Council's Local Improvement Scheme has been very successful in helping to deliver the strategic objective to safeguard the County's environment. Local communities and groups are supported in restoring and enhancing their natural and historic environment, attracting significant amounts of investment into the Nottinghamshire and helping to make the County a more attractive place to live and work.

Statutory and Policy Implications

11. This report has been compiled after consideration of implications in respect of finance, equal opportunities, human resources, crime and disorder, human rights, the safeguarding of children, sustainability and the environment and those using the service and where such implications are material they are described below. Appropriate consultation has been undertaken and advice sought on these issues as required.

RECOMMENDATION/S

- 1) To note the success of the County Council's Local Improvement Schemes programme in physically improving the local natural and historic environment and the current programme of Heritage and Conservation projects.

Sally Gill

Group Manager Planning

For any enquiries about this report please contact: Heather Stokes, Conservation Team Manager (0115 969 6508)

Constitutional Comments

12. This report is for noting only by the Culture Committee. No legal issues arise at present. (NAB 19.09.12)

Financial Comments (DJK 19.09.12)

13. The contents of this report are duly noted; the Conservation Team will continue to support communities in applying for these grants within the confines of the L.I.S. budget and for match funding where applicable.

Background Papers

None

Electoral Division(s) and Member(s) Affected

All

APPENDIX 1 – LOCAL IMPROVEMENT SCHEMES HERITAGE AND CONSERVATION PROJECTS 2012/13

Location	Brief description of project
Ashfield, River Maun & River Meden	Eradication of Himalayan Balsam
Huthwaite, Nunn Brook Park	Shrub, hedgerows & tree planting, creation of picnic area
Sutton & Kirkby, River Maun	Biodiversity works at Maun grasslands
Stanton Hill - Rainbow Gardens Allotment	Creation of community allotment for children
Selston, Holly Hills Grasslands	Habitat enhancements, signage & interpretation
Teversal Visitor Centre, Phoenix greenway area	Picnic tables & benches
Silverhill Wood	Planting native tree species
Whaley Thorns Graveyard	Community open space, wildflower meadow, nesting boxes, seating
Elkesley Cemetery	Memorial tree seat
Markham Clinton	Memorial plaque to commemorate airmen who died in 1943
Tuxford Cemetery/Green Burial Ground	2 x Interpretation Boards
Marnham	Restoration of Listed church hall
Worksop Priory	Restoration of Listed Gate House, Shrine & Chapel
Worksop, Maple Drive (adjacent to Prospect Hill Junior School)	Woodland enhancements, footpaths, habitat creation and seating
Gateford	Tree planting to commemorate Queen's Diamond Jubilee
Beckingham, The Old Willow Works	Creation of community activities area/community garden
Mattersey	Children's village archaeology project
Misterton, Library Building (Listed)	Restoration of the Clock
Scrooby Croft	Green space enhancements and community sculpture
Langold Country Park	Restoration of bandstand
Retford, Conway Garden Sheltered Accommodation	Creation of garden area
Beeston, St John the Baptist Church	Contribution to wider project to create community gardens
Kimberley	Creation of a Kimberley History Trail with interpretation boards
Cossall	Refurbishment of 2 War Memorials
Beeston Lock	Phase II works to create heritage centre
Stapleford, Archers Field Recreation Ground	Creation of & improvements to existing footpaths, interpretation, seating & planting
Stapleford Children's Centre, Grenville Drive	Transform outdoor space into community garden
Brinsley Recreation Ground, Cordy Lane	Creation of Jubilee entrance arch
Newstead & Annesley Country Park	Creation of pathways, management plan, hedge planting and weed management
Woodborough	Outdoor classroom seat in Pinfold
Calverton, Collyer Road	Provision of accessible allotment for disabled users
Arnold, Arnot Hill Park	Interpretation panel, sculptures, benches, tree planting
Bestwood Country Park	Improved access and seating, restoration of wall
Mansfield, Bailey Crescent	Tree planting on the Green (20)
Mansfield, Goodhand Crescent	Tree planting on the Green (10)
Mansfield, Leas Avenue/Pye Avenue/Townroe Drive	Tree planting on the Green (10)
Pleasley, Little Lane footpath	Tree works and creation of nature walk
Mansfield Woodhouse – Church Street	Restoration and enhancement of historic garden

Community Gardens	
Mansfield Woodhouse, Yeoman Hill Park	Restoration of World War II memorial gates
Mansfield, Hermitage Lane (River Maun)	Eradication of Japanese Knotweed and Himalayan Balsam
Cuckney, Norton & Goldsmeadow	Contribution to restoration of water meadows
Southwell, Brackenhurst Campus	Enhancements to network of ponds
Norwell	Tree planting around the "parish gardens" (allotments)
North Muskham, Ferry Inn	Interpretation
Ollerton, St Pauline's Church	Restoration of Miners banner
Blidworth Mill	Restoration of grade II listed building and increasing public access
Coddington All Saints	Graveyard survey & mapping
Balderton, Mount Road Cemetery	Replace/renew the walkways in Garden of Remembrance
Newark Castle	Restoration of scheduled ancient monument
Newark, Barnby Road Allotments	Install security fencing
Scarrington Pinfold	Restoration of pinfold
Keyworth	Restoration of Memorial gates
Cropwell Butler, Sheldon Field Recreation Ground	Provision of a lectern type information board at the main entrance
Kinoulton	Creation of outdoor environmental classroom
Ruddington, Church Street	Restoration of War Memorial, interpretation, pathways & seating
Bunny Village Hall, Church Street	Excavation of existing circular planting area in front of the hall and replanting
Bunny Village Green	2 x seats and tree planting
Ruddington, Hareham Allotment Gardens	Creation of community orchard & removal/ replacement of asbestos cement shed
West Bridgford Park	Creation of tree trail and interpretation
Shelford, Main Road	Refurbishment of War Memorial
Shelford & Newton	Creation of a history trail covering 12 sites
East Leake, Sheepwash Brook	Secure Embankment, culverts and habitats

REPORT OF THE GROUP MANAGER PLANNING

HERITAGE LOTTERY FUND STRATEGIC FRAMEWORK 2013 - 18

Purpose of the Report

1. To provide information on the Heritage Lottery Fund's new Strategic Framework for funding in the period 2013 - 2018.

Information and Advice

2. Heritage Lottery Fund published its Strategic Framework 2013 – 18 in July 2012, setting out its plans for investing £375million per annum over the 5 year period. This is a significantly increased level of funding, from £180million p.a., as a result of strong ticket sales and an increased share of Lottery income.
3. The County has been very successful in attracting investment in its heritage through the Heritage Lottery Fund. In addition to projects to enhance County Council-owned heritage assets, community groups have been supported, often through the provision of match funding through the Local Improvement Schemes programme. The County Council has also successfully worked in partnership with a wide range of organisations to attract larger amounts of HLF funding and the development of future projects is already underway. All such projects will require match funding from partners and the County Council's role and contribution to individual projects will be the subject of future reports.
4. Under the new Framework some existing programmes have been changed and new programmes introduced in response to a consultation that attracted more than 2000 responses. 75% of the funding will be available through open programmes with the remainder through targeted programmes and special initiatives.

Open Programmes

5. The *Heritage Grants* for all types of heritage projects over £100,000 and *Heritage Grants Major Batch* for projects over £5million will not have any major changes to the application process. Two new open programmes have been introduced however, with *Our Heritage* replacing the former *Your Heritage* programme for projects over £10,000 and with an increased maximum grant of £100,000. This programme will also make transition funding of between £10,000 and £100,000 available for organisations that have already received HLF funding but need to review strategies and business plans in order to achieve improved sustainability.
6. The *Sharing Heritage* programme will provide grants of between £3,000 and £10,000 to any not-for-profit group to enable them to explore, share and celebrate their community's heritage. Start-up grants will also be available through this programme, to support community groups taking responsibility for heritage assets in setting up constitutional frameworks and creating strategies for managing the assets.

Targeted Programmes

7. The *Young Roots* programme for projects devised and led by young people will continue with the lower age limit reduced from 13 to 11. The maximum grant available has been increased to £50,000 to enable projects to include realistic staff costs for youth work and to run for longer periods (up to two years).
8. *Parks for People*, which provides grants of between £100,000 and £5million, has been extended to include public cemeteries and the project requirements have been simplified. The requirements for the *Townscape Heritage Initiative*, which provides funding for enhancements in conservation areas, have also been simplified. The *Landscape Partnerships* programme for landscape scale projects to invest in cultural, natural, archaeological and built heritage will have an increased maximum available grant of £3million and a more flexible approach to the maximum area covered will be taken.
9. Two new grants being introduced include the *Places of Worship* programme which will provide funding of between £10,000 and £250,000 focusing on urgent repairs (to replace the *Repair Grants* programme), engaging people and providing facilities to increase public use. *Heritage Enterprise* is a new strategic intervention, providing grants of between £100,000 and £5million for the conservation and adaptation of individual or coherent groups of historic buildings where the end use actively contributes to sustainable development in areas of economic disadvantage.

Special Initiatives

10. A second round of applications for the *Skills for the Future* programme closes in January 2013. Grants of between £100,000 and £1million are available to support work-based training opportunities in the heritage sector, providing both specialist heritage skills and training in managing volunteer, education and outreach programmes.
11. The *Collecting Cultures* programme will encourage applications from museums, archives and documentary heritage collections from late 2013. Funding will support the development of a strategic approach to collection development and acquisition including using collecting to engage new audiences, develop collecting skills and develop and retain collections knowledge within heritage organisations.
12. A new *Catalyst* programme is intended to help the heritage and arts sectors to diversify their funding streams by accessing funding from private sources. *Catalyst endowments* of between £500,000 and £1million will match fund the creation of new long-term sources of income through endowments. *Catalyst capacity building* will provide grants of £100,000 to £500,000 to umbrella organisations for the provision of training programmes tailored to the fundraising needs of smaller heritage organisations. *Catalyst small grants* will provide funding of between £3,000 and £10,000 to enable individual organisations to access professional fundraising advice and invest in their fundraising infrastructure.

Policy Changes

13. The importance of digital technologies has been recognised and a change of policy introduced to enable projects focussed purely on the creation of digital material to make heritage more accessible to be funded.
14. Applications to the *Our Heritage* programme for physical improvements to heritage assets will be accepted from private individuals or commercial organisations in future provided the projects can demonstrate public support, the need for HLF input and will deliver a step-change in public access and engagement.
15. Greener projects will be created in response to the significant impacts of climate change on heritage. All *Heritage Grants* will be asked to consider how the projects will be affected by and mitigate predicted changes in the local environment and grant assessments will be weighted in favour of those demonstrating reduced environmental impacts. In addition, all projects asking for more than £2million will be required to carry out a carbon footprint assessment during the project development stage.

Other Options Considered

16. Not applicable.

Reason/s for Recommendation/s

17. Nottinghamshire and the County Council have already successfully attracted significant investment from the Heritage Lottery Fund. The increased funding available and the changes to funding streams should open up more opportunities for investment in the County's heritage and particularly in heritage identified as being at risk. Such opportunities will continue to be pursued and updates and reports will be brought to future meetings of the Culture Committee for consideration.

Statutory and Policy Implications

18. This report has been compiled after consideration of implications in respect of finance, equal opportunities, human resources, crime and disorder, human rights, the safeguarding of children, sustainability and the environment and those using the service and where such implications are material they are described below. Appropriate consultation has been undertaken and advice sought on these issues as required.

RECOMMENDATION/S

- 1) To note the changes to the Heritage Lottery Fund Strategic Framework.
- 2) To note the continued work to attract further investment in the County's heritage and the potential requirement for match funding.

Sally Gill
Group Manager Planning

For any enquiries about this report please contact: Heather Stokes, Conservation Team Manager (0115 969 6508)

Constitutional Comments

19. This report is for noting only by the Culture Committee, no legal issues arise at present. (NAB 19.09.12)

Financial Comments (DJK 19.09.12)

20. The contents of this report are duly noted; the County Council will continue to support this work and apply for grants as appropriate, match funding will be made available for some of these schemes and a separate report will be generated for larger grants where we need to match fund.

Background Papers

None

Electoral Division(s) and Member(s) Affected

All

**REPORT OF CORPORATE DIRECTOR, POLICY, PLANNING AND
CORPORATE SERVICES**

WORK PROGRAMME

Purpose of the Report

1. To consider the Committee's work programme for 2012/13.

Information and Advice

2. The County Council requires each committee to maintain a work programme. The work programme will assist the management of the committee's agenda, the scheduling of the committee's business and forward planning. The work programme will be updated and reviewed at each pre-agenda meeting and committee meeting. Any member of the committee is able to suggest items for possible inclusion.
3. The **attached** work programme has been drafted in consultation with the Chairman and Vice-Chairman, and includes items which can be anticipated at the present time. Other items will be added to the programme as they are identified.

Other Options Considered

4. None.

Reason for Recommendations

5. To assist the committee in preparing its work programme.

Statutory and Policy Implications

6. This report has been compiled after consideration of implications in respect of finance, equal opportunities, human resources, crime and disorder, human rights, the safeguarding of children, sustainability and the environment and those using the service and where such implications are material they are described below. Appropriate consultation has been undertaken and advice sought on these issues as required.

RECOMMENDATION/S

That the Committee's work programme be noted, and consideration be given to any changes which the Committee wishes to make.

Jayne Francis-Ward
Corporate Director, Policy, Planning and Corporate Services

For any enquiries about this report please contact:

Martin Gately
Democratic Services Officer
T: 0115 9772826

Constitutional Comments (HD)

7. The Committee has authority to consider the matters set out in this report by virtue of its terms of reference.

Financial Comments (PS)

8. There are no financial implications arising directly from this report.

Background Papers

Except for previously published documents, which will be available elsewhere, the documents listed here will be available for inspection in accordance with Section 100D of the Local Government Act 1972.

Electoral Division(s) and Member(s) Affected

All.

CULTURE COMMITTEE - WORK PROGRAMME

<u>Report Title</u>	<u>Brief summary of agenda item</u>	<u>Lead Officer</u>
30 October 2012		
Chairman's report		Derek Higton
Initial committee budget proposals 2013/14		Derek Higton
Cultural Strategy	Six monthly monitoring report	Patrick Candler
Archives Plan	Seeking approval for the Archives Plan	Peter Gaw
Southwell Library Poetry Festival 2012 evaluation		Peter Gaw
Grizzled Skipper Project	Interim report on SITA funded Grizzled Skipper project	Sally Gill
27 November 2012		
Chairman's report	Including update on Seasonal Canine Illness	Derek Higton
Performance Monitoring report	Six monthly performance monitoring report for Key Performance Indicators	Derek Higton/Sally Gill
Community Archaeology	To provide an update on Community Archaeology projects	Sally Gill
Archives Acquisitions Policy	Revision to policy	Peter Gaw
Archives and Central Library Partnership Agreement		Peter Gaw
Shining Stars/Rising Stars Programme		Steve Bradley
Robin Hood Festival update		Patrick Candler
Summer Reading Challenge 2012		Peter Gaw
8 January 2013		
Chairman's report		Derek Higton
5 February 2013		
Chairman's report		Derek Higton
Fees & Charges – Libraries, Archives & Information	Annual determination	Peter Gaw
Fees & Charges – Country Parks and Green Estate	Annual determination	Patrick Candler
Events programme for Country Parks 2013/14		Patrick Candler
Partnership funding to Creswell Crags Heritage Trust 2013/14	Annual determination	Patrick Candler
Committee budget		Derek Higton
5 March 2013		
Chairman's report		Derek Higton
Revisions to library opening hours		Peter Gaw

<u>Report Title</u>	<u>Brief summary of agenda item</u>	<u>Lead Officer</u>
Adult & Community Learning Service Priorities	Annual report to set priorities	Peter Gaw
Trent Vale Landscape Partnership	To report on the achievements of the Heritage Lottery funded Trent Vale Landscape Partnership project	Sally Gill
26 March 2013		
Chairman's report		Derek Highton
Biodiversity Offsetting Pilot Project	To provide Members with a Year 1 report on progress with the national Biodiversity Offsetting pilot project	Sally Gill
April 2013 date tbc		
Chairman's report		Derek Highton
Cultural Strategy	Six monthly monitoring report	Patrick Candler
Libraries Strategy	Six monthly monitoring report	Peter Gaw
May 2013 date tbc		
Chairman's report		Derek Highton
Performance Monitoring report	Six monthly performance monitoring report for Key Performance Indicators	Derek Highton/Sally Gill
Outside bodies report	Comprising reports on: Arts Partnership Nottingham/ Creswell Heritage Trust/ Experience Nottinghamshire/ Greenwood Community Forest Partnership/ Nottingham Playhouse Board/ Nottingham Playhouse Trust/ Sherwood Forest Trust/ Sherwood Forest Regional Park Board	Derek Highton
To be placed		
Budget monitoring	Quarterly reports	Derek Highton
Idle Valley Management Board	Report from officer group	Sally Gill
Green Estate Management Plan	Seeking approval for the Plan	Patrick Candler
Sports and Arts Development Plan	Seeking approval for the Plan	Steve Bradley
Libraries Digital Skills Project		Peter Gaw
Historic Environment Record	To provide Members with information on the County's Historic Environment Record and seek endorsement for future working relationships with other Local Planning Authorities	Sally Gill