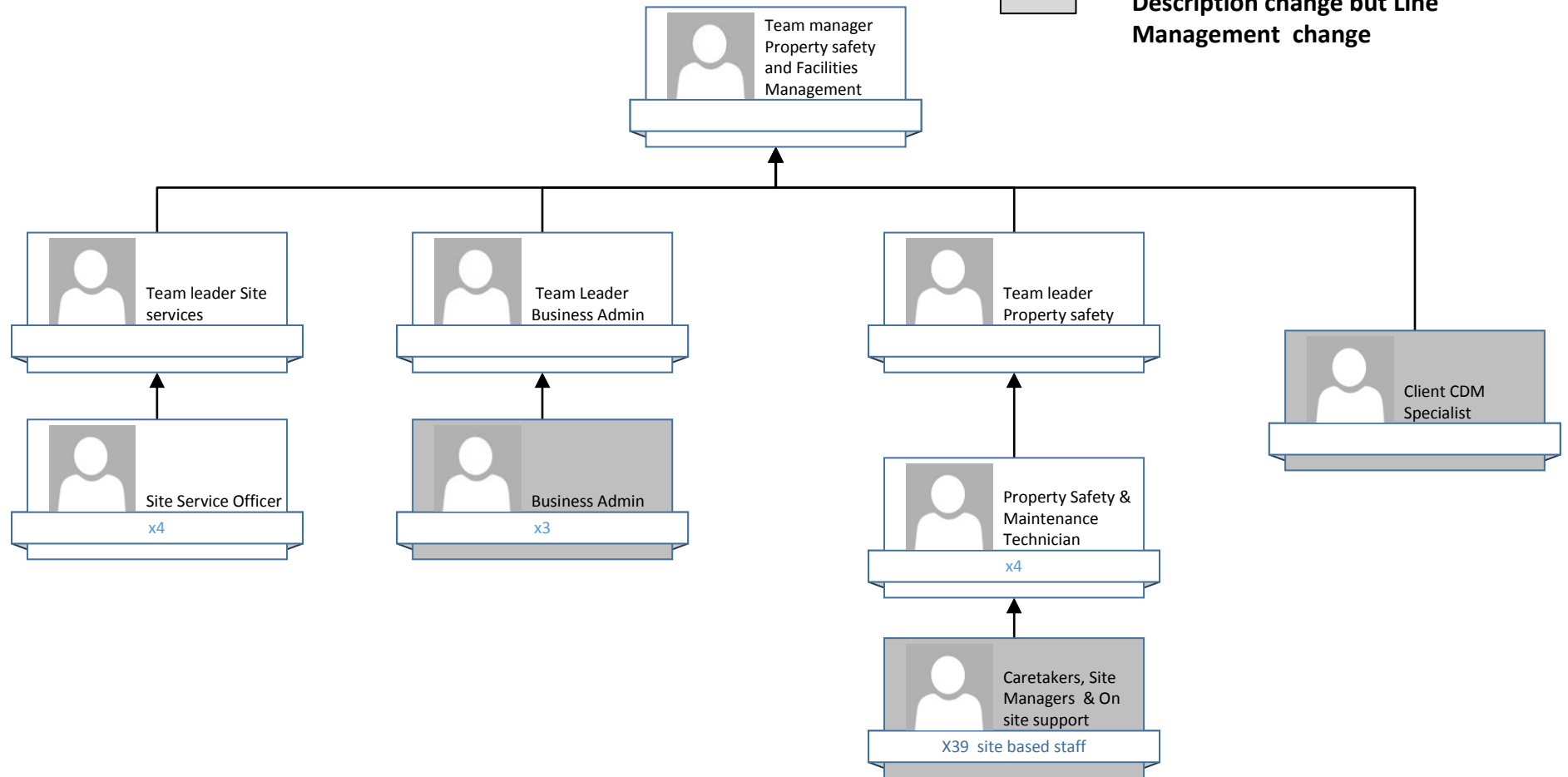


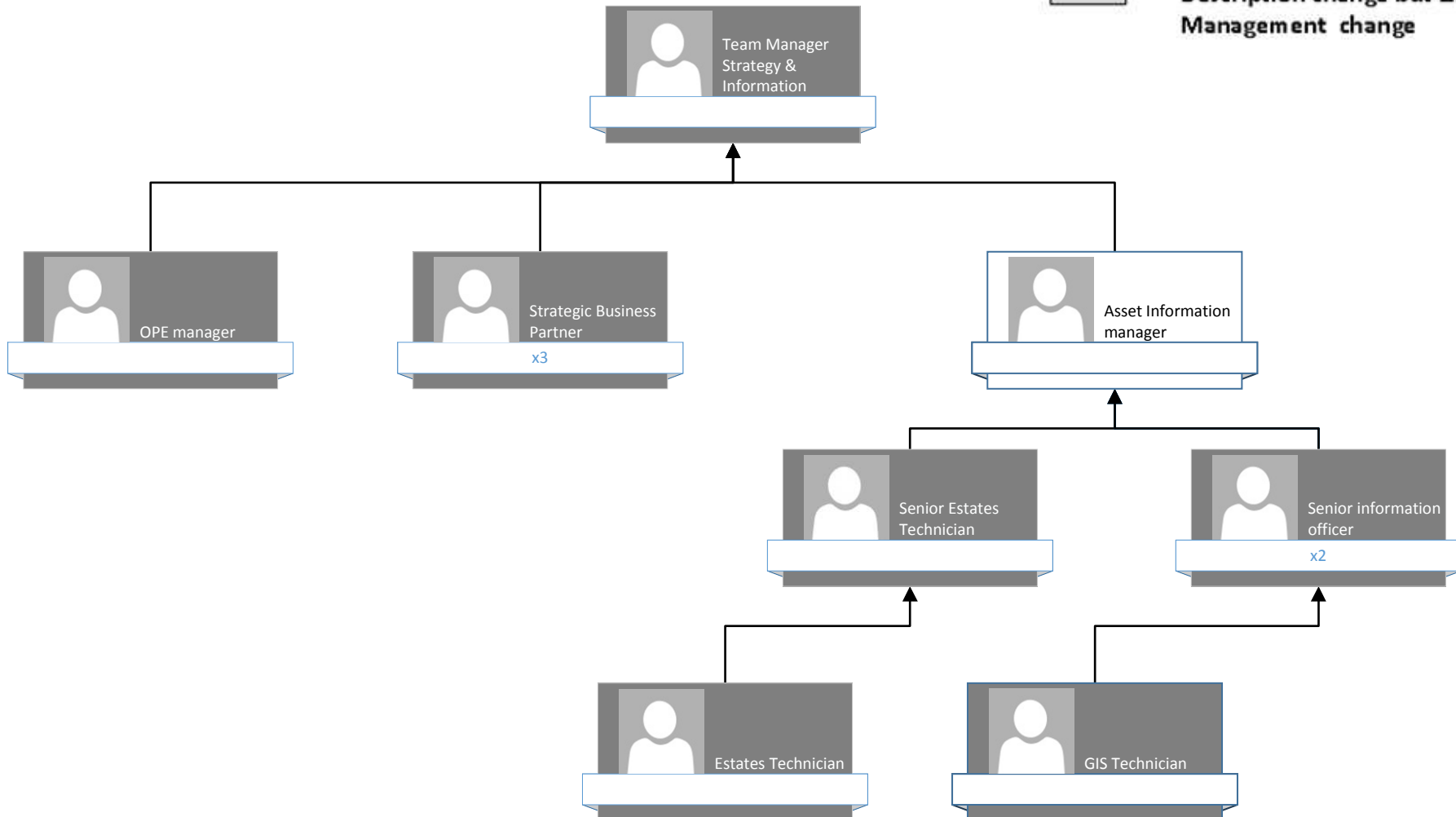
Property Safety & Facilities Management

- KEY;**
- White boxes - new role / new Job Description
  - Dark grey boxes – existing role; no change to Job Description
  - Light grey boxes – No Job Description change but Line Management change



Property Strategy & Information

- KEY;**
- White boxes - new role / new Job Description
  - Dark grey boxes – existing role; no change to Job Description
  - Light grey boxes – No Job Description change but Line Management change



Property Contracts & Commercial

**KEY;**



**White boxes - new role / new Job Description**



**Dark grey boxes – existing role; no change to Job Description**



**Light grey boxes – No Job Description change but Line Management change**

