

REPORT OF SERVICE DIRECTOR FOR TRANSFORMATION AND CHANGE**NOTTINGHAMSHIRE PLAN – ANNUAL DELIVERY PLAN 2022/23****Purpose of the Report**

1. This report is to provide information to the Overview Committee on the Nottinghamshire Plan - Annual Delivery Plan 2022/23 and Annual Delivery Plan Assurance Report 2022/23.
2. This will allow Overview Committee to consider if the current Annual Delivery Plan- Assurance Report Q2 2022/23:
 - a. provides assurance for the delivery of the Annual Delivery Plan.
 - b. consider whether the actions identified and detailed in the Annual Delivery Plan are sufficiently progressed in the Assurance Report to ensure that the Annual Delivery Plan 2022/23 is on track
3. It will also allow Overview Committee to consider if the current Annual Delivery Plan 2022/23:
 - a. provides actions that are in line with the Council's ambitions, as set out in the Nottinghamshire Plan.
 - b. provides significantly robust measures that support and benefit the timely delivery of the ambitions as set out in the Nottinghamshire Plan.

Information

1. The Nottinghamshire Plan was approved by Full Council in November 2021. It is a new, ambitious plan for the County Council, which sets out the strategic vision for the future of Nottinghamshire and the local authority.
2. The activity in the Nottinghamshire Plan is built around achieving a bold 10-year vision for a 'healthy, prosperous and greener future for everyone'. This vision is supported by nine ambitions and commitments to 2025 which act as a framework for all County Council activity.
 - a. Helping our people live healthier, more independent lives
 - b. Supporting communities and families
 - c. Keeping children, vulnerable adults, and communities safe
 - d. Building skills that help people to get good local jobs
 - e. Strengthening businesses and creating more good-quality jobs
 - f. Making Nottinghamshire somewhere people love to live, work and visit
 - g. Attracting investment in infrastructure, the economy, and green growth

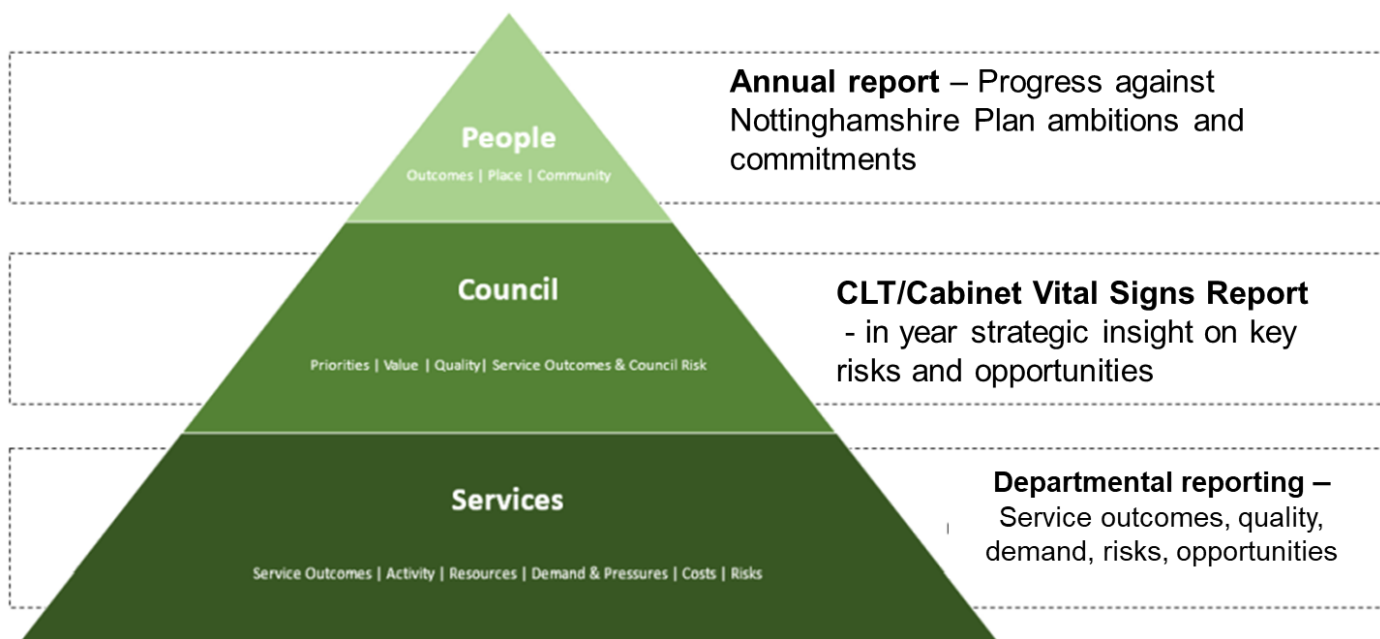
- h. Improving transport and digital connections
- i. Protecting the environment and reducing our carbon footprint.

A tenth ambition 'A forward-looking and resilient Council' describes the Council's ambitions and commitments in terms of internal corporate improvement.

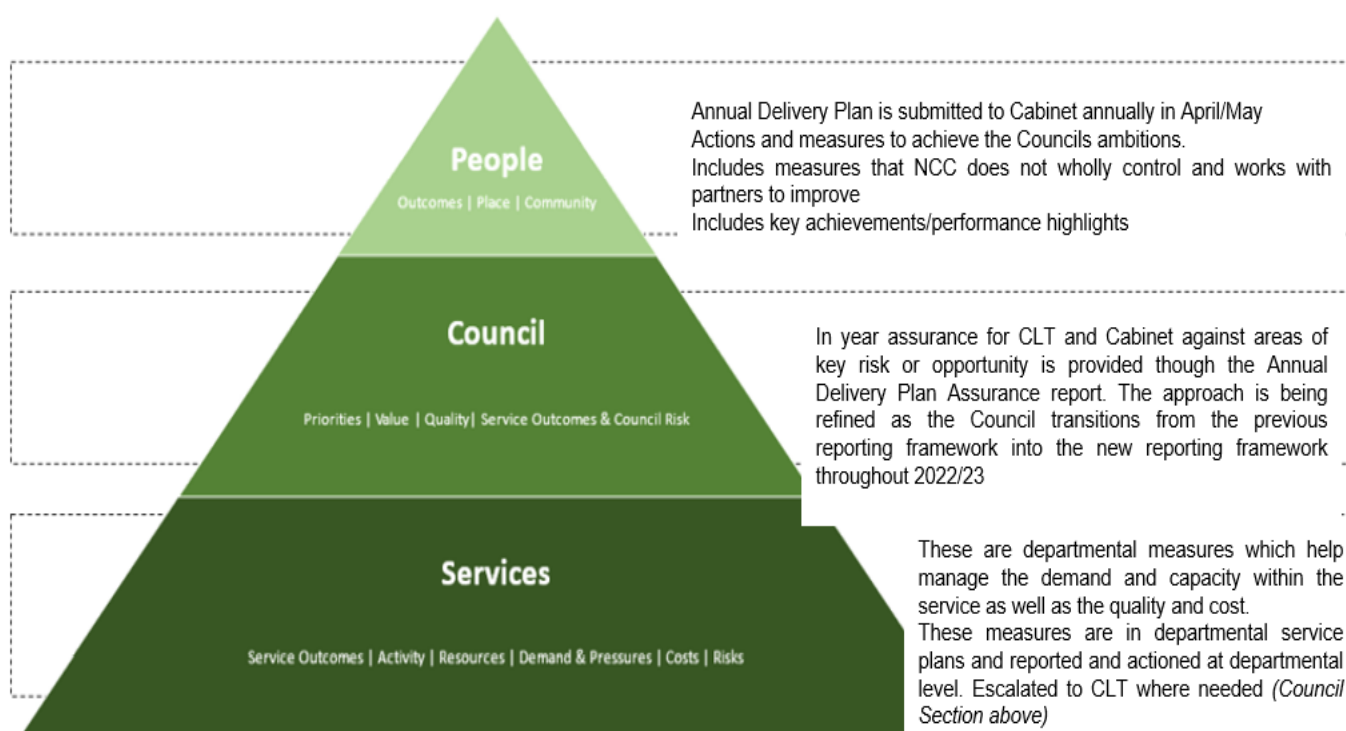
3. The Annual Delivery Plan sets out the actions that the Council will take/are taking over 2022/23 to achieve its ambitions. Quarterly, an assurance report is produced to monitor the actions and metrics included in the Annual Delivery Plan which reports progress against the key measures of success. The measures included within the assurance report are not a definitive list but measures which the Council has some control over and can be obtained on a quarterly basis.
4. The Annual Delivery Plan contains details of the broad range of activities the Council will undertake over the year including plans to strengthen children's and adults social care services, improve the quality of the County's roads and pavements and make progress towards the ambition to reduce the County Council's carbon emissions to carbon neutral by 2030. It also outlines plans to access more funding and powers from the Government through a devolution deal, that will support the Council in delivering its plans to attract investment and boost the regional economy and green growth. The signing of the devolution deal, will, subject to relevant approvals, consultation and primary and secondary legislation passing through Parliament, establish the first ever Mayoral Combined County Authority in the country.
5. The Annual Delivery Plan Assurance report has been produced to monitor the actions and metrics included in the Annual Delivery Plan. The measures included within the assurance report are not a definitive list but are measures which the Council has some control over, and which can be obtained on a quarterly basis.
6. In summary, all actions with the Annual Delivery Plan Assurance Report are currently 'On Track' to achieve by year end (2022/23) or 'Completed'. We are performing well against the majority of our key measures, but work will continue to maintain and, where necessary, improve performance by the end of 2022/23. The assurance report provides commentary and any mitigating action to be take where actions or measures are experiencing obstacles/underperforming.
7. Any actions or measures which are experiencing obstacles/under performing in the Assurance Report with have a relevant mitigation/ improvement highlighted.
8. The Council have also committed to publishing a full review of all actions and measures, and the impact/outcome achieved, at the end of 2022/23 in our Annual Report.

Performance Framework

9. The performance framework which the Annual Delivery Plan sits in, provide a 3-tier approach towards performance management to ensure that the correct level of detail is delivered to the correct audience to manage risk.



10. This diagram demonstrates how the Annual Delivery Plan fits within the Performance Framework.



RECOMMENDATION/S

That Overview Committee:

- 1 Notes the performance framework within which the Annual Delivery Plan 2022/23 sits
- 2 Considers if the current Annual Delivery Plan- Assurance Report Q2 2022/23:
 - a. provides assurance for the delivery of the Annual Delivery Plan.
 - b. consider whether the actions identified and detailed in the Delivery Plan are sufficiently progressed in the Assurance Report to ensure that the Annual Delivery Plan 2022/23 is on track.
- 3 Considers if the current Annual Delivery Plan 2022/23:
 - a. provides actions that are in line with the Council's ambitions, as set out in the Nottinghamshire Plan
 - b. provides significantly robust measures that support and benefit the timely delivery of the ambitions as set out in the Nottinghamshire Plan,
 - c. Provides feedback to inform the development of the 2023/24 Annual Delivery Plan.

For any enquiries about this report please contact:

Isobel Fleming, Service Director Transformation and Change 0115 854 6184

Constitutional Comments (CEH 15/11/2022)

Financial Comments (KRP 14/11/22)

There are no direct financial implications arising from the contents of the report.

Background Papers and Published Documents

Except for previously published documents, which will be available elsewhere, the documents listed here will be available for inspection in accordance with Section 100D of the Local Government Act 1972.

- 'Annual Delivery Plan [Document.ashx \(nottinghamshire.gov.uk\)](Document.ashx (nottinghamshire.gov.uk))

Electoral Division(s) and Member(s) Affected

- 'All'