

PROVISION OF ZEBRA CROSSING

NOTICE IS HEREBY GIVEN that the Nottinghamshire County Council in exercise of its powers under Section 23 of the Road Traffic Regulation Act 1984, proposes to install a zebra pedestrian crossing across Musters Road, West Bridgford in the District of Rushcliffe approximately 150 meters north of its junction with Ellesmere Road.

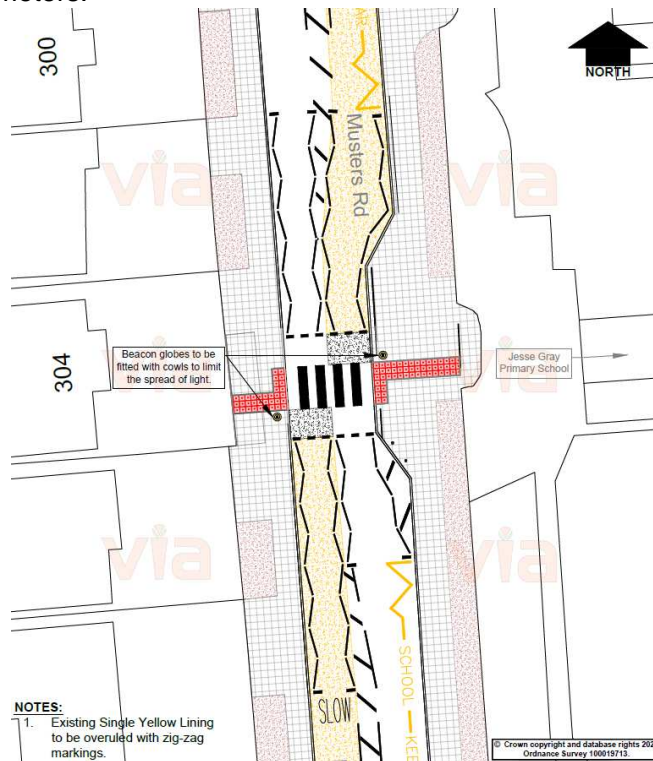
The crossing will incorporate a controlled area indicated by zig-zag markings along the carriageway where parking and loading will be prohibited. The extents of the controlled area are: -

Musters Road – west side

- from a point 130 meters north of its junction with Ellesmere Road in a northerly direction for a distance of 40 meters.

Musters Road – east side

- from a point 138 meters north of its junction with Ellesmere Road in a northerly direction for a distance of 31 meters.



The crossing is being installed to assist pedestrians crossing Musters Road, including parents and children travelling to or from the adjacent primary school.

Any comments (quoting ref: Musters Road, West Bridgford – Zebra Crossing) in respect of this proposal must be received by me, in writing, by **14th August 2020**.

**Via East Midlands Ltd
Environmental Management & Design
Bilsthorpe Depot
Bilsthorpe Business Park
Bilsthorpe
Nottinghamshire
NG22 8ST**

or by e-mail on TMconsultation@viaem.co.uk

If you'd like to find out more about how we use your data, please see our Privacy Notice:

www.viaem.co.uk/privacy-notice-for-the-public/