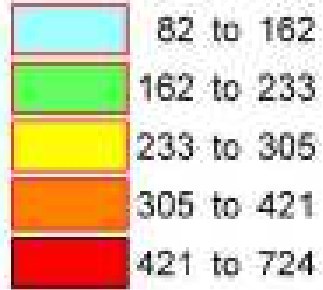


Rate per 1,000 population over 65 - Assessments and reviews since April 2014

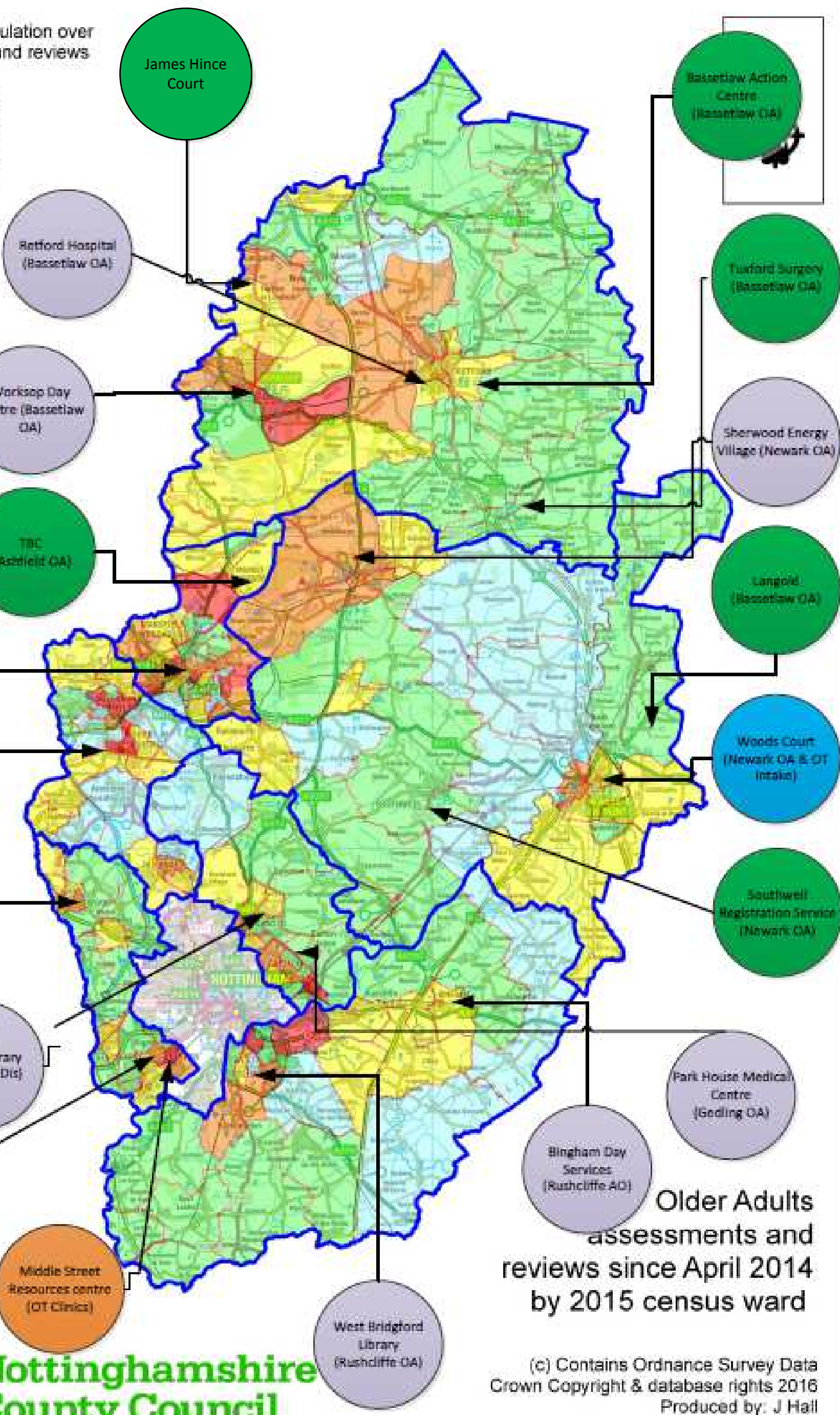


OT Clinics

SC Clinics

Bath

Potential Sites



Older Adults assessments and reviews since April 2014 by 2015 census ward

(c) Contains Ordnance Survey Data
 Crown Copyright & database rights 2016
 Produced by: J Hall
 Date: 15/06/2016