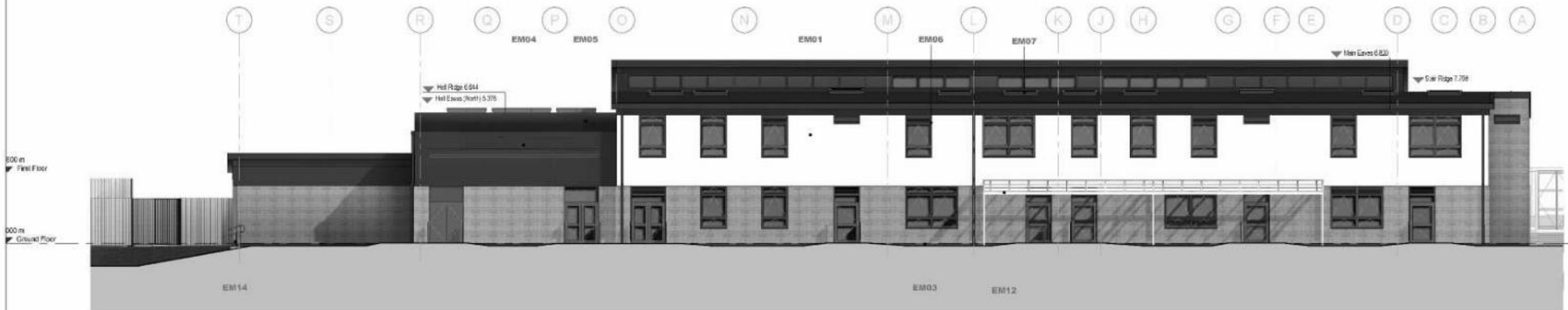




1 Proposed South Elevation
1:100



2 Proposed North Elevation
1:100

NOTE
Exact materials and colours to be confirmed.

Materials		Bird and Bat Box Schedule	
Number	Description	Number	Description
	Colour		Material
	Material		Colour
	Mark		Location Code
	Height		Material
	Width		Finish



Erection of a Primary School for 1.5 Forms of Entry, plus 26 place Nursery with associated car parking. Associated areas of soft play, hard play, grass playing field with landscaping works. Erection of 2.4m high security fencing and gates to perimeter and sprinkler tank. Provision of bound surface and lit cycle and footpath on route of public footpath East Leake FP5.
53 Evans Road, East Leake, Nottinghamshire.
Planning Application No. 8/22/00570/CTY

This map is reproduced from Ordnance Survey material with the permission of Ordnance Survey on behalf of the Controller of Her Majesty's Stationery Office © Crown copyright.
Unauthorised reproduction infringes Crown copyright and may lead to prosecution or civil proceedings. (1000019713) (2022)

Not to Scale

Produced by: JW

Date: MAY 2022



PLAN 7